

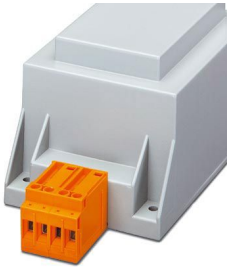
VTRK 4-SI/C GY - Molded transformer terminal block



2702500

<https://www.phoenixcontact.com/us/products/2702500>

Please be informed that the data shown in this PDF document is generated from our online catalog. Please find the complete data in the user documentation. Our general terms of use for downloads are valid.



Molded transformer terminal block, connection method: Screw connection, length: 23.4 mm, width: 12.4 mm, height: 29.7 mm, color: gray

Commercial data

| | |
|--------------------------------------|--------------------------------|
| Item number | 2702500 |
| Packing unit | 1 pc |
| Note | Made to order (non-returnable) |
| Sales key | AA20 |
| Product key | AARAEA |
| Catalog page | Page 315 (CL-2002) |
| GTIN | 4017918060800 |
| Weight per piece (including packing) | 10.26 g |
| Weight per piece (excluding packing) | 10.26 g |
| Customs tariff number | 85369010 |
| Country of origin | PL |

VTRK 4-SI/C GY - Molded transformer terminal block



2702500

<https://www.phoenixcontact.com/us/products/2702500>

Technical data

Product properties

| | |
|-----------------------|----------------------------|
| Product type | Distributor terminal block |
| Number of positions | 2 |
| Number of connections | 4 |
| Number of rows | 1 |

Insulation characteristics

| | |
|----------------------|-----|
| Overvoltage category | III |
| Degree of pollution | 3 |

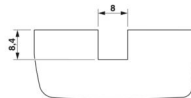
Electrical properties

| | |
|--------------------------|--------|
| Rated insulation voltage | 32 V |
| Rated surge voltage | 0.8 kV |

Connection data

| | |
|---|--|
| Screw thread | M3 |
| Tightening torque | 0.6 ... 0.8 Nm |
| Stripping length | 8 mm |
| | 8 mm |
| Internal cylindrical gage | A4 |
| Conductor cross section rigid | 0.2 mm ² ... 6 mm ² |
| Cross section AWG | 24 ... 10 (converted acc. to IEC) |
| Conductor cross section flexible | 0.2 mm ² ... 4 mm ² |
| Conductor cross-section flexible (ferrule without plastic sleeve) | 0.25 mm ² ... 4 mm ² |
| Flexible conductor cross section (ferrule with plastic sleeve) | 0.25 mm ² ... 2.5 mm ² |
| 2 conductors with same cross section, solid | 0.2 mm ² ... 1.5 mm ² |
| 2 conductors with same cross section, flexible | 0.2 mm ² ... 1.5 mm ² |
| 2 conductors with same cross section, flexible, with ferrule without plastic sleeve | 0.25 mm ² ... 1.5 mm ² |
| 2 conductors with the same cross section, flexible, with TWIN ferrule with plastic sleeve | 0.5 mm ² ... 2.5 mm ² |
| Nominal current | 10 A (is determined by the fuse used) |
| Nominal voltage | voltage data only possible in conjunction with transformer |

Dimensions

| | |
|---------------------|--|
| Dimensional drawing |  |
| Width | 12.4 mm |
| Height | 29.7 mm |
| Length | 23.4 mm |

VTRK 4-SI/C GY - Molded transformer terminal block



2702500

<https://www.phoenixcontact.com/us/products/2702500>

Material specifications

| | |
|--|------|
| Color | gray |
| Flammability rating according to UL 94 | V0 |
| Insulating material group | I |
| Insulating material | PA |

VTRK 4-SI/C GY - Molded transformer terminal block

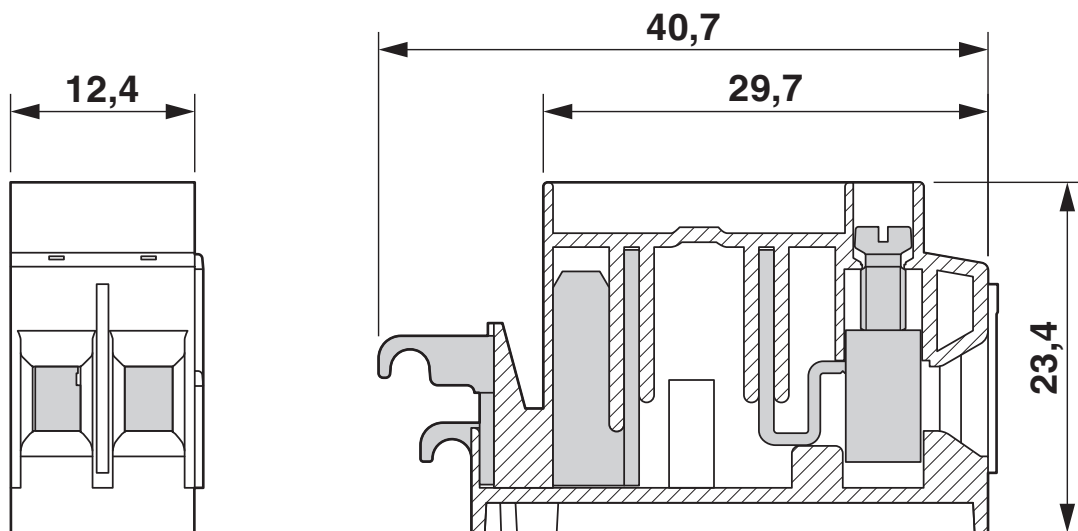


2702500

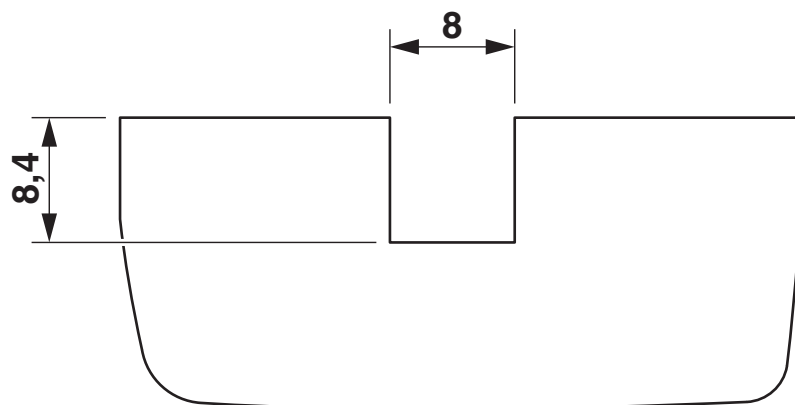
<https://www.phoenixcontact.com/us/products/2702500>

Drawings

Dimensional drawing



Dimensional drawing



VTRK 4-SI/C GY - Molded transformer terminal block



2702500

<https://www.phoenixcontact.com/us/products/2702500>

Classifications

ECLASS

| | |
|-------------|----------|
| ECLASS-13.0 | 27141110 |
|-------------|----------|

VTRK 4-SI/C GY - Molded transformer terminal block



2702500

<https://www.phoenixcontact.com/us/products/2702500>

Accessories

SI FORM C 4 A DIN 72581 - Fuse

0913731

<https://www.phoenixcontact.com/us/products/0913731>

Flat-type plug-in fuse, type C, color code: pink, nominal current: 4 A



SI FORM C 5 A DIN 72581 - Fuse

0913692

<https://www.phoenixcontact.com/us/products/0913692>

Flat-type plug-in fuse, type C, color code: light brown, nominal current: 5 A



Phoenix Contact 2024 © - all rights reserved

<https://www.phoenixcontact.com>

Phoenix Contact USA
586 Fulling Mill Road
Middletown, PA 17057, United States
(+717) 944-1300
info@phoenixcon.com