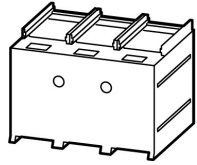


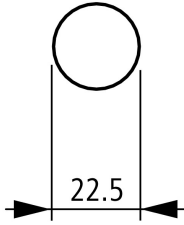
Tunnel terminal 4p 2x240mm² w. cover

Part no. NZM3-4-XKA2

Article no. 271462



Delivery programme

Space requirement			
Rated current	I_n	A	630
For use with			
For use with			NZM3(-4), PN3(-4), N(S)3(-4)
For use with			Three- and four-pole
Terminal capacities			
Type of conductor			
Cu/Al cable			Copper cable Al cable
Terminal capacities			
flexible		mm ²	1 x 50 - 240 2 x 50 - 240
AWG/kcmil			
flexible		mm ²	1 x 0 - 500 2 x 0 - 500

Notes

Type contains parts for a terminal located at top or bottom for 3 or 4-pole circuit-breakers.

A standard with control circuit terminal for 1 x 0.75 - 2.5 mm² (18 - 14 AWG) or 2 x 0.75 - 1.5 mm² (18 - 16 AWG) copper conductors.

Fitted outside the switch housing

Use with flexible and highly flexible conductors ferrules. Maximum specified cross-section can only be connected when stranded and without ferrules.

Mounting of the cover NZM3(-4)-XKSA obligatory (supplied).

Notes

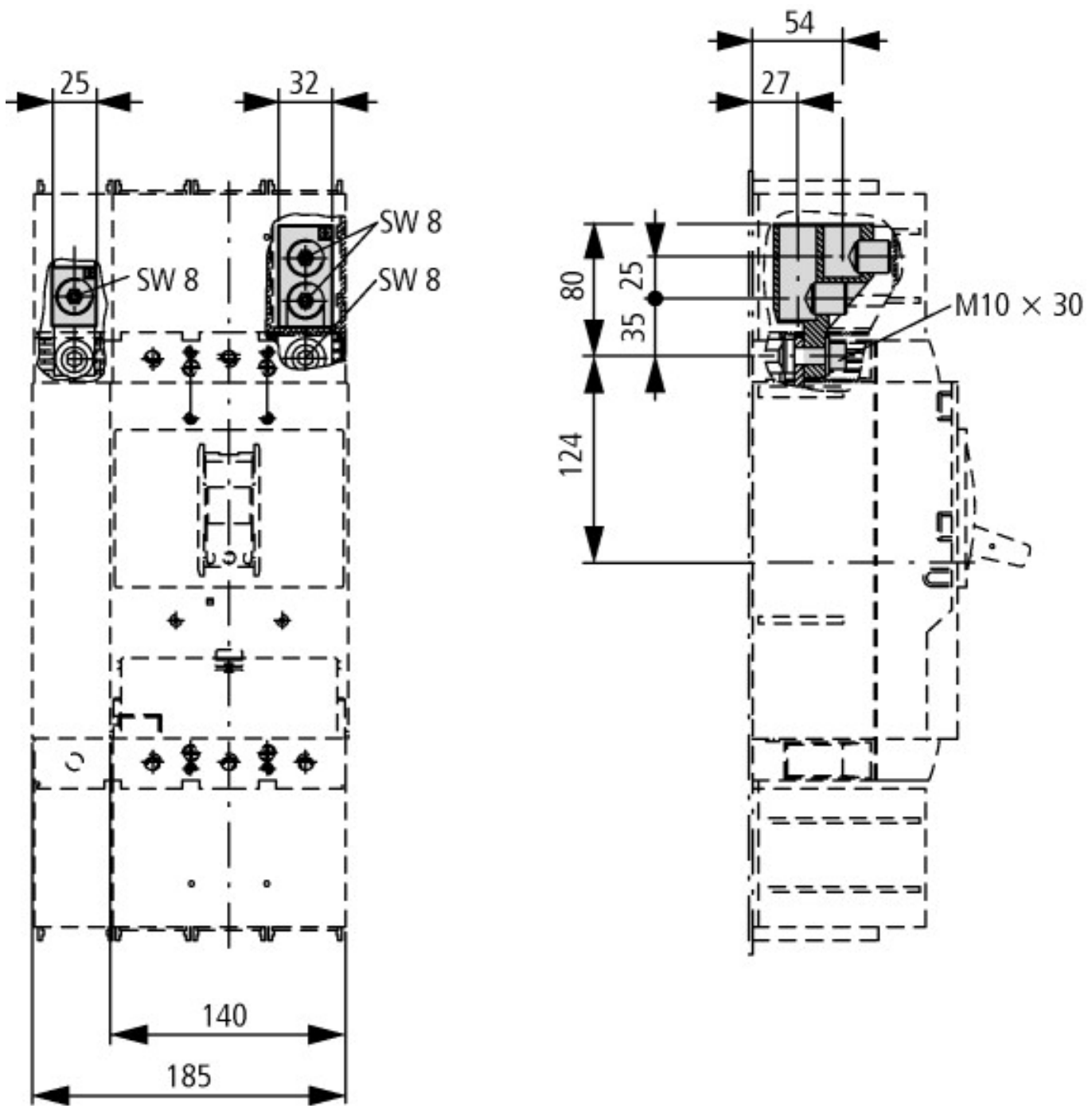
The following applies for the rated current: The values have been determined conform to IEC/EN 60947 (switchgear standard) and generally relate to the max. defined cross-sections and are intended for the purpose of orientation.

The engineering standards which apply in each case must be observed.

Technische Daten nach ETIM 4.0

Suitable for number of poles			4
Type			-

Dimensions



Additional product information (links)

IL01210007Z (AWA1230-2050) Tunnel terminal

ftp://ftp.moeller.net/DOCUMENTATION/AWA_INSTRUCTIONS/IL01210007Z2010_10.pdf