

Specifications

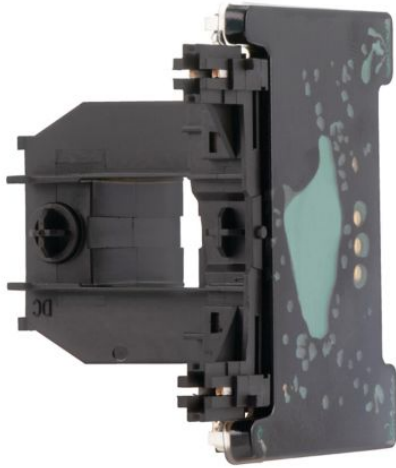
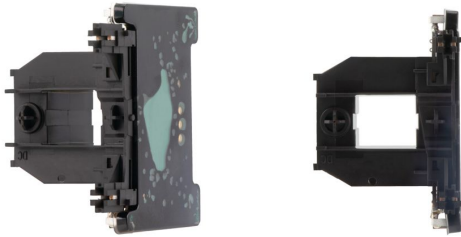


Photo is representative



Eaton 281156

Eaton Moeller® series DILM Replacement coil, Tool-less plug connection, RDC 60: 48 - 60 V DC, DC, For use with: DILM17, DILM25, DILM32, DILM38

General specifications

PRODUCT NAME	Eaton Moeller® series DILM replacement coil
CATALOG NUMBER	281156
MODEL CODE	DILM32-XSP(RDC60)
EAN	4015082811563
PRODUCT LENGTH/DEPTH	66 mm
PRODUCT HEIGHT	55 mm
PRODUCT WIDTH	46 mm
PRODUCT WEIGHT	0.156 kg
CERTIFICATIONS	CSA-C22.2 No. 14-05 UL File No.: E29096 UL Category Control No.: NLDX CSA Class No.: 2411-03, 3211-04 UL IEC/EN 60947-4-1 CE CSA CSA File No.: 012528 UL 508
GLOBAL CATALOG	281156

Product specifications

ACCESSORIES	Individual coils
10.11 SHORT-CIRCUIT RATING	Is the panel builder's responsibility. The specifications for the switchgear must be observed.
10.12 ELECTROMAGNETIC COMPATIBILITY	Is the panel builder's responsibility. The specifications for the switchgear must be observed.
10.13 MECHANICAL FUNCTION	The device meets the requirements, provided the information in the instruction leaflet (IL) is observed.
10.2.2 CORROSION RESISTANCE	Meets the product standard's requirements.
10.2.3.1 VERIFICATION OF THERMAL STABILITY OF ENCLOSURES	Meets the product standard's requirements.
10.2.3.2 VERIFICATION OF RESISTANCE OF INSULATING MATERIALS TO NORMAL HEAT	Meets the product standard's requirements.
10.2.3.3 RESIST. OF INSUL. MAT. TO ABNORMAL HEAT/FIRE BY INTERNAL ELECT. EFFECTS	Meets the product standard's requirements.
10.2.5 LIFTING	Does not apply, since the entire switchgear needs to be evaluated.
10.2.6 MECHANICAL IMPACT	Does not apply, since the entire switchgear needs to be evaluated.
10.2.7 INSCRIPTIONS	Meets the product standard's requirements.
10.3 DEGREE OF PROTECTION OF ASSEMBLIES	Does not apply, since the entire switchgear needs to be evaluated.
10.4 CLEARANCES AND CREEPAGE DISTANCES	Meets the product standard's requirements.
10.5 PROTECTION AGAINST ELECTRIC SHOCK	Does not apply, since the entire switchgear needs to be evaluated.
10.6 INCORPORATION OF SWITCHING DEVICES AND COMPONENTS	Does not apply, since the entire switchgear needs to be evaluated.

Resources

CATALOGS	SmartWire-DT Catalog Product Range Catalog Switching and protecting motors eaton-product-overview-for-machinery-catalogue-ca08103003zen-en-us.pdf
DECLARATIONS OF CONFORMITY	DA-DC-00004816.pdf DA-DC-00004776.pdf DA-DC-00004783.pdf
DRAWINGS	eaton-contactors-dilm-replacement-coil-3d-drawing.eps
ECAD MODEL	ETN.281156.edz
INSTALLATION INSTRUCTIONS	IL03407036Z
INSTALLATION VIDEOS	WIN-WIN with push-in technology

10.7 INTERNAL ELECTRICAL CIRCUITS AND CONNECTIONS	Is the panel builder's responsibility.
10.8 CONNECTIONS FOR EXTERNAL CONDUCTORS	Is the panel builder's responsibility.
10.9.2 POWER-FREQUENCY ELECTRIC STRENGTH	Is the panel builder's responsibility.
10.9.3 IMPULSE WITHSTAND VOLTAGE	Is the panel builder's responsibility.
10.9.4 TESTING OF ENCLOSURES MADE OF INSULATING MATERIAL	Is the panel builder's responsibility.
VOLTAGE TYPE	DC
AMBIENT OPERATING TEMPERATURE - MAX	60 °C
AMBIENT OPERATING TEMPERATURE - MIN	-25 °C
RATED CONTROL SUPPLY VOLTAGE (US) AT AC, 50 HZ - MAX	0 V
RATED CONTROL SUPPLY VOLTAGE (US) AT AC, 50 HZ - MIN	0 V
RATED CONTROL SUPPLY VOLTAGE (US) AT AC, 60 HZ - MAX	0 V
RATED CONTROL SUPPLY VOLTAGE (US) AT AC, 60 HZ - MIN	0 V
RATED CONTROL SUPPLY VOLTAGE (US) AT DC - MAX	60 V
RATED CONTROL SUPPLY VOLTAGE (US) AT DC - MIN	48 V
PRODUCT CATEGORY	Accessories

PROJECT NAME:
PROJECT NUMBER:
PREPARED BY:
DATE:



Eaton Corporation plc
Eaton House
30 Pembroke Road
Dublin 4, Ireland
Eaton.com

© 2025 Eaton. All Rights Reserved.

Follow us on social media to get the latest product and support information.

