

ST-REL3-KG 60/21 - Relay connectors



2821106
<https://www.phoenixcontact.com/us/products/2821106>

Please be informed that the data shown in this PDF document is generated from our online catalog. Please find the complete data in the user documentation. Our general terms of use for downloads are valid.



Relay connector, equipped with miniature switching relay, contacts (AgNi): medium to large loads, 1 changeover contact, input voltage 60 V AC/DC, with LED display, pluggable into basic terminal blocks

Commercial data

Item number	2821106
Packing unit	1 pc
Note	Made to order (non-returnable)
Sales key	C460
Product key	CK6122
Catalog page	Page 88 (IF-2005)
GTIN	4017918077020
Weight per piece (including packing)	40.78 g
Weight per piece (excluding packing)	40.59 g
Customs tariff number	85364190
Country of origin	DE

ST-REL3-KG 60/21 - Relay connectors



2821106

<https://www.phoenixcontact.com/us/products/2821106>

Technical data

Product properties

Product type	Relay Module
Operating mode	100% operating factor
Mechanical service life	approx. 2×10^7 cycles

Electrical properties

Maximum power dissipation for nominal condition	0.6 W
Test voltage (Winding/contact)	2.5 kV AC (50 Hz, 1 min., winding/contact)

Input data

Coil side

Nominal input voltage U_N	60 V AC/DC
Input voltage range	48 V AC/DC ... 66 V AC/DC
Input voltage range in reference to U_N	0.8 ... 1.1
Drive and function	monostable
Typical input current at U_N	10 mA
Typical response time	7 ms
Typical release time	11 ms (with DC)
Protective circuit	Bridge rectifier, varistor
Operating voltage display	yes

Output data

Switching

Contact switching type	Single contact, 1 changeover contact
Type of switch contact	Single contact
Contact material	AgNi
Maximum switching voltage	250 V AC/DC
Limiting continuous current	6 A
Maximum inrush current	8 A
Interrupting rating (ohmic load) max.	95 W (at 24 V DC)
	50 W (at 48 V DC)
	45 W (at 60 V DC)
	35 W (at 110 V DC)
	55 W (at 220 V DC)
	1500 VA (for 250 V AC)

Connection data

Connection method	Plug-in connection
-------------------	--------------------

Dimensions

Width	20.8 mm
-------	---------

ST-REL3-KG 60/21 - Relay connectors



2821106

<https://www.phoenixcontact.com/us/products/2821106>

Height	33 mm
Depth	66.5 mm

Material specifications

Color	green (RAL 6021)
-------	------------------

Environmental and real-life conditions

Ambient conditions

Ambient temperature (operation)	-20 °C ... 50 °C
Ambient temperature (storage/transport)	-20 °C ... 70 °C

Standards and regulations

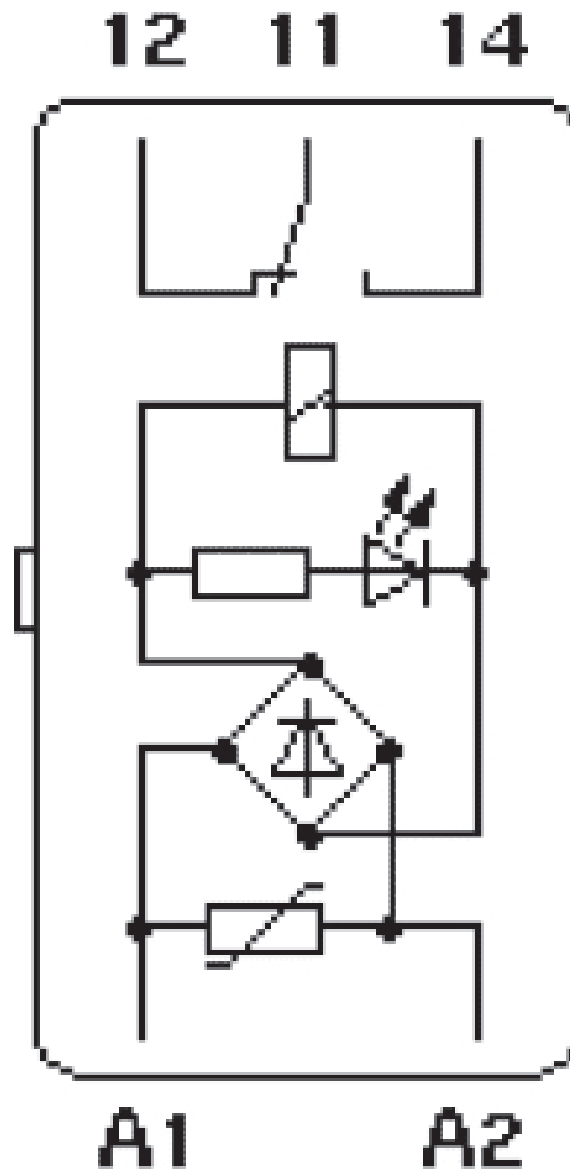
Standards/regulations	DIN VDE 0110b, Gr. C for 250 V DC
	IEC 60255/DIN VDE 0435 (in relevant parts)
	DIN EN 50178/VDE 0160 (in relevant parts)
	EN 60730/DIN VDE 0631
	DIN VDE 0160 (in relevant parts)

Mounting

Mounting type	Plug-in mounting
---------------	------------------

Drawings

Circuit diagram



ST-REL3-KG 60/21 - Relay connectors



2821106

<https://www.phoenixcontact.com/us/products/2821106>

Classifications

ECLASS

ECLASS-11.0	27371601
-------------	----------

UNSPSC

UNSPSC 21.0	39122334
-------------	----------

ST-REL3-KG 60/21 - Relay connectors



2821106

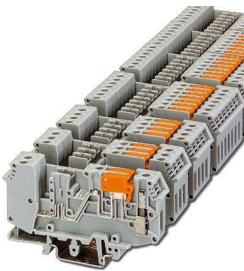
<https://www.phoenixcontact.com/us/products/2821106>

Accessories

URELG 3-PMTK - Basic terminal block

2820709

<https://www.phoenixcontact.com/us/products/2820709>



Basic terminal blocks with test pick-off on both sides and knife disconnection for NS 32 and NS 35/7,5 DIN rail, with end cover, for ST-REL..., ST-OV..., and ST-OE... plugs, 3-pos.

UDK-RELG 3 - Basic terminal block

2777043

<https://www.phoenixcontact.com/us/products/2777043>



Basic terminal blocks with test pick-off on both sides and double connections with the same potential for NS 32 and NS 35/7,5 DIN rail, with end cover, for ST-REL..., ST-OV..., and ST-OE... plugs, 3-pos.

ST-REL3-KG 60/21 - Relay connectors



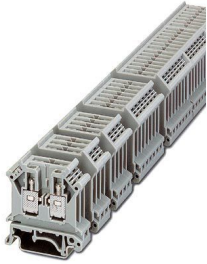
2821106

<https://www.phoenixcontact.com/us/products/2821106>

URELG 3 - Basic terminal block

2820136

<https://www.phoenixcontact.com/us/products/2820136>



Basic termination blocks with screw connection for NS 32 and NS 35/7.5 DIN rail, with end cover, for ST-REL..., ST-OV... and ST-OE... plugs, 3-pos.

Phoenix Contact 2024 © - all rights reserved

<https://www.phoenixcontact.com>

Phoenix Contact USA
586 Fulling Mill Road
Middletown, PA 17057, United States
(+717) 944-1300
info@phoenixcon.com