

PR2-RSC3-LDP-24DC/4X21AU - Relay Module



2834724
<https://www.phoenixcontact.com/us/products/2834724>

Please be informed that the data shown in this PDF document is generated from our online catalog. Please find the complete data in the user documentation. Our general terms of use for downloads are valid.



Pre-assembled relay modules with screw connection, consisting of: relay base, industrial relay with integrated LED, freewheeling diode and engage/disengage manual actuate lever, and retaining bracket. Input voltage: 24 V DC, 4 changeover contacts with gold-plated contacts, 5 A

Your advantages

- With DC types, freewheeling diode is integrated in relay
- Relay with detectable manual operation and status LED
- Mechanical switch position indicator
- 4-changeover contact types with multi-layer gold contacts
- Logical contact arrangement thanks to 1/3-level relay base

Commercial data

Item number	2834724
Packing unit	1 pc
Note	Made to order (non-returnable)
Sales key	C463
Product key	CK631H
Catalog page	Page 397 (C-7-2015)
GTIN	4046356044554
Weight per piece (including packing)	120 g
Weight per piece (excluding packing)	115.27 g
Customs tariff number	85364900
Country of origin	JP

PR2-RSC3-LDP-24DC/4X21AU - Relay Module



2834724

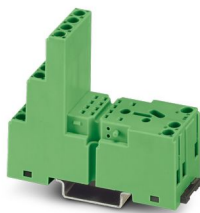
<https://www.phoenixcontact.com/us/products/2834724>

Set consists of

PR2-BSC3/4X21 - Relay base

2833576

<https://www.phoenixcontact.com/us/products/2833576>



Relay base PR2-B, for industrial relay REL-IR with 2 or 4 changeover contacts, 1/3-level design, screw connection, plug-in option for input/interference suppression modules, for mounting on NS 35/7,5

EL2-P35 - Retaining bracket

2833592

<https://www.phoenixcontact.com/us/products/2833592>



Relay retaining bracket, with eject function and integrated equipment marking area (8 x 25 mm), to suit relay base PR2, for 35 mm high industrial relay

PR2-RSC3-LDP-24DC/4X21AU - Relay Module



2834724

<https://www.phoenixcontact.com/us/products/2834724>

MP 2 - Marker labels

2833644

<https://www.phoenixcontact.com/us/products/2833644>

Equipment marker, labeling surface 9 x 25 mm



PR2-RSC3-LDP-24DC/4X21AU - Relay Module



2834724

<https://www.phoenixcontact.com/us/products/2834724>

Technical data

Product properties

Product type	Relay Module
Application	Universal
Operating mode	100% operating factor
Mechanical service life	5x 10 ⁷ cycles

Insulation characteristics

Overvoltage category	II
Pollution degree	2

Electrical properties

Service life electrical	see diagram
Maximum power dissipation for nominal condition	0.91 W
Test voltage (Winding/contact)	2 kV AC (50 Hz, 1 min., winding/contact)
Test voltage (Contact/contact)	2 kV AC (50 Hz, 1 min., contact/contact)

Input data

Coil side

Nominal input voltage U _N	24 V DC
Input voltage range	18.7 V DC ... 36 V DC
Input voltage range in reference to U _N	see diagram
Drive and function	monostable
Typical input current at U _N	38 mA
Typical response time	13 ms
Typical release time	14 ms
Protective circuit	Freewheeling diode
Operating voltage display	Green LED

Output data

Switching

Contact switching type	4 changeover contacts
Type of switch contact	Single contact
Contact material	AgNi, hard gold-plated
Maximum switching voltage	250 V AC/DC
Minimum switching voltage	1 V
Limiting continuous current	5 A
Maximum inrush current	12 A (15 ms)
Min. switching current	1 mA
Interrupting rating (ohmic load) max.	1250 VA (for 250 V AC)
	120 W (at 24 V DC)
	110 W (at 48 V DC)

PR2-RSC3-LDP-24DC/4X21AU - Relay Module



2834724

<https://www.phoenixcontact.com/us/products/2834724>

	78 W (at 60 V DC)
	55 W (at 110 V DC)
	77 W (at 220 V DC)

Connection data

Coil side

Connection method	Screw connection
Stripping length	7 mm
Conductor cross section rigid	0.14 mm ² ... 2.5 mm ²
Conductor cross section flexible	0.14 mm ² ... 2.5 mm ²
Conductor cross section AWG	26 ... 14

Contact side

Connection method	Screw connection
Stripping length	7 mm
Conductor cross section rigid	0.14 mm ² ... 2.5 mm ²
Conductor cross section flexible	0.14 mm ² ... 2.5 mm ²
Conductor cross section AWG	26 ... 14

Dimensions

Width	27 mm
Height	78.5 mm
Depth	86 mm

Material specifications

Color	green (RAL 6021)
-------	------------------

Environmental and real-life conditions

Ambient conditions

Degree of protection (Relay)	RT I (Relay)
Ambient temperature (operation)	-25 °C ... 60 °C
Ambient temperature (storage/transport)	-25 °C ... 70 °C

Standards and regulations

Standards/regulations	IEC 60664
	EN 50178

Mounting

Mounting type	DIN rail mounting
Assembly instructions	in rows with zero spacing
Mounting position	any

PR2-RSC3-LDP-24DC/4X21AU - Relay Module



2834724

<https://www.phoenixcontact.com/us/products/2834724>

Phoenix Contact 2024 © - all rights reserved
<https://www.phoenixcontact.com>

Phoenix Contact USA
586 Fulling Mill Road
Middletown, PA 17057, United States
(+717) 944-1300
info@phoenixcon.com