

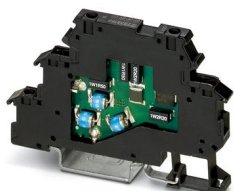
TT-2-PE-110AC - Surge protection device



2858483

<https://www.phoenixcontact.com/us/products/2858483>

Please be informed that the data shown in this PDF document is generated from our online catalog. Please find the complete data in the user documentation. Our general terms of use for downloads are valid.



Terminal block with two-stage surge protection for a floating double conductor, separate PE connection, nominal voltage: 110 V AC, for mounting on NS 35/7.5, terminal block width 6.2 mm, terminal block height: 54.6 mm

Your advantages

- Space-saving and cost-saving with a narrow overall width of just 6 mm
- Cost-optimized with tailored product features
- Easy selection for all possible demands in MCR applications with a complete product portfolio

Commercial data

Item number	2858483
Packing unit	1 pc
Note	Made to order (non-returnable)
Sales key	CL02
Product key	CL2221
Catalog page	Page 94 (C-6-2015)
GTIN	4017918893156
Weight per piece (including packing)	28.83 g
Weight per piece (excluding packing)	26.47 g
Customs tariff number	85363010
Country of origin	DE

TT-2-PE-110AC - Surge protection device



2858483

<https://www.phoenixcontact.com/us/products/2858483>

Technical data

Product properties

IEC test classification	C1
	C2
	C3
	D1
Type	Double-level terminal block with PE foot – separate PE connection
Product type	Surge protection for MCR technology
Number of positions	2
Surge protection fault message	none
Wire pairs per module	1

Insulation characteristics

Overvoltage category	II
----------------------	----

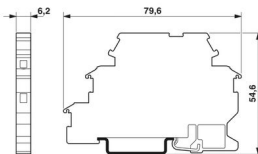
Electrical properties

Nominal voltage U_N	110 V AC
-----------------------	----------

Connection data

Connection method	Screw connection
Screw thread	M3
Tightening torque	0.8 Nm
Conductor cross section flexible	0.2 mm ² ... 2.5 mm ²
Conductor cross section rigid	0.2 mm ² ... 4 mm ²
Conductor cross section AWG	24 ... 14

Dimensions

Dimensional drawing	
Width	6.2 mm
Height	79.6 mm
Depth	54.6 mm

Material specifications

Flammability rating according to UL 94	V-0
Housing material	PA 6.6

Mechanical properties

TT-2-PE-110AC - Surge protection device



2858483

<https://www.phoenixcontact.com/us/products/2858483>

Mechanical data

Open side panel	Yes
-----------------	-----

Protective circuit

Direction of action	Line-Line & Line-Earth Ground
Maximum continuous voltage U_C	120 V AC
Rated current	300 mA (30 °C)
Operating effective current I_C at U_C	$\leq 5 \mu A$
Residual current I_{PE}	$\leq 10 \mu A$
Nominal discharge current I_n (8/20) μs (line-line)	5 kA
Nominal discharge current I_n (8/20) μs (line-ground)	5 kA
Pulse discharge current I_{imp} (10/350) μs	500 A
Total discharge current I_{total} (8/20) μs	10 kA
Max. discharge current I_{max} (8/20) μs maximum (line-line)	5 kA
Max. discharge current I_{max} (8/20) μs maximum (line-earth)	5 kA
Nominal pulse current I_{an} (10/1000) μs (line-earth)	100 A
Output voltage limitation at 1 kV/ μs (line-line) spike	$\leq 250 V$
Output voltage limitation at 1 kV/ μs (line-earth) spike	$\leq 650 V$
Voltage protection level U_p (line-line)	$\leq 300 V$ (C2 - 10 kV / 5 kA) $\leq 250 V$ (C1 - 1 kV / 500 A)
Voltage protection level U_p (line-earth)	$\leq 900 V$ (C2 - 10 kV / 5 kA) $\leq 650 V$ (C1 - 1 kV / 500 A) $\leq 850 V$ (C3 - 10 A) $\leq 900 V$ (C3 - 100 A) $\leq 800 V$ (D1 - 500 A)
Response time t_A (line-line)	$\leq 1 ns$
Response time t_A (line-earth)	$\leq 100 ns$
Input attenuation aE, sym.	typ. 1.5 dB ($\leq 2 MHz$) typ. 0.6 dB ($\leq 500 kHz / 150 \Omega$)
Cut-off frequency f_g (3 dB), sym. in 50 Ω system	typ. 15 MHz
Cut-off frequency f_g (3 dB), sym. in 150 Ω system	typ. 8 MHz
Capacity (Core-Core)	typ. 600 pF
Capacity (Core-Earth)	$\leq 2 pF$
Resistance per path	9.4 Ω 10 %
Surge protection fault message	none
Max. required back-up fuse	315 mA (T/IEC 60127-2/3)
Impulse durability (line-line)	C1 - 1 kV / 500 A C2 - 10 kV / 5 kA
Impulse durability (line-earth)	C1 - 1 kV / 500 A C2 - 10 kV / 5 kA C3 - 100 A D1 - 500 A
Alternating current carrying capacity (line-line)	0.1 A - 1 s

TT-2-PE-110AC - Surge protection device



2858483

<https://www.phoenixcontact.com/us/products/2858483>

Alternating current carrying capacity (line-earth)	1 A - 1 s
--	-----------

Environmental and real-life conditions

Ambient conditions

Degree of protection	IP20
Ambient temperature (operation)	-40 °C ... 85 °C
Altitude	≤ 2000 m

Standards and regulations

Air clearances and creepage distances

Standards/regulations	IEC 60664-1
-----------------------	-------------

Standards Information technology specification

Standards/regulations	IEC 61643-21
	EN 61643-21
	IEC 61643-21
	EN 61643-21
Standards/specifications	IEC 61643-21/A1
Note	2008
Standards/specifications	EN 61643-21/A1
Note	2009

Mounting

Mounting type	DIN rail: 35 mm
---------------	-----------------

Phoenix Contact 2024 © - all rights reserved

<https://www.phoenixcontact.com>

Phoenix Contact USA
586 Fulling Mill Road
Middletown, PA 17057, United States
(+717) 944-1300
info@phoenixcon.com