

IB IL 24 PWR IN/2F-D-2MBD-PAC - Inline terminal



2863821

<https://www.phoenixcontact.com/us/products/2863821>

Please be informed that the data shown in this PDF document is generated from our online catalog. Please find the complete data in the user documentation. Our general terms of use for downloads are valid.



Inline power terminal block, complete with accessories (connector and labeling field), 24 V DC, with fuse (main and segment voltage) and diagnostics, transmission speed 2 Mbaud

Your advantages

- Supply of the 24 V main voltage U_{M}
- Diagnostic and status indicators
- Feed-in or provision of the 24 V segment voltage U_{S}

Commercial data

Item number	2863821
Packing unit	1 pc
Note	Made to order (non-returnable)
Sales key	DR01
Product key	DRI121
Catalog page	Page 267 (AX-2009)
GTIN	4017918977726
Weight per piece (including packing)	83.8 g
Weight per piece (excluding packing)	44 g
Customs tariff number	85389091
Country of origin	DE

2863821

<https://www.phoenixcontact.com/us/products/2863821>

Technical data

Dimensions

Width	12.2 mm
Height	119.8 mm
Depth	71.5 mm

Notes

Utilization restriction

EMC note	EMC: class A product, see manufacturer's declaration in the download area
----------	---

Interfaces

Inline local bus

Number of interfaces	2
Connection method	Inline data jumper
Transmission speed	2 Mbps

System properties

Module

ID code (dec.)	190
ID code (hex)	BE
Length code (hex)	C2
Length code (dec)	194
Process data channel	2 bit
Input address area	2 bit
Output address area	0 Byte
Register length	2 bit
Required parameter data	1 Byte
Required configuration data	4 Byte

Product properties

Type	modular
	Inline
Product type	I/O component
Product family	Inline

Electrical properties

Potentials: Communications power (U_L)

Supply voltage	7.5 V DC (via voltage jumper)
Current draw	max. 45 mA DC

Potentials: Main circuit supply (U_M)

2863821

<https://www.phoenixcontact.com/us/products/2863821>

Supply voltage	24 V DC (via Inline connector)
Supply voltage range	19.2 V ... 30 V (including all tolerances, including ripple)

Potentials: Segment circuit supply (U_S)

Supply voltage	24 V DC (via Inline connector)
Supply voltage range	19.2 V DC ... 30 V DC (including all tolerances, including ripple)

Connection data

Connection technology

Connection name	Inline connector
-----------------	------------------

Conductor connection

Connection method	Spring-cage connection
Conductor cross section rigid	0.08 mm ² ... 1.5 mm ²
Conductor cross section flexible	0.08 mm ² ... 1.5 mm ²
Conductor cross section AWG	28 ... 16
Stripping length	8 mm

Inline connector

Connection method	Spring-cage connection
Conductor cross section, rigid	0.08 mm ² ... 1.5 mm ²
Conductor cross section, flexible	0.08 mm ² ... 1.5 mm ²
Conductor cross section AWG	28 ... 16
Stripping length	8 mm

Environmental and real-life conditions

Ambient conditions

Degree of protection	IP20
----------------------	------

Mounting

Mounting type	DIN rail mounting
---------------	-------------------

IB IL 24 PWR IN/2F-D-2MBD-PAC - Inline terminal



2863821

<https://www.phoenixcontact.com/us/products/2863821>

Environmental product compliance

China RoHS	Environmentally friendly use period: unlimited = EFUP-e
	No hazardous substances above threshold values

IB IL 24 PWR IN/2F-D-2MBD-PAC - Inline terminal



2863821

<https://www.phoenixcontact.com/us/products/2863821>

Accessories

IB IL SCN-PWR IN-CP - Inline connector

2727637

<https://www.phoenixcontact.com/us/products/2727637>

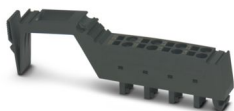


Connector, colored, for Inline power and segment terminal blocks

IB IL SCN-PWR IN - Inline connector

2727462

<https://www.phoenixcontact.com/us/products/2727462>



Connector, for Inline power and segment terminal blocks

IB IL 24 PWR IN/2F-D-2MBD-PAC - Inline terminal



2863821

<https://www.phoenixcontact.com/us/products/2863821>

IB IL FIELD 2 - Marking field

2727501

<https://www.phoenixcontact.com/us/products/2727501>

Marking field, width: 12.2 mm



ESL 62X10 - Insert strip

0809492

<https://www.phoenixcontact.com/us/products/0809492>

Insert strip, Sheet, white, unlabeled, can be labeled with: Office printing systems, CMS-P1-PLOTTER, mounting type: insert, lettering field size: 62 x 10 mm, Number of individual labels: 72



Phoenix Contact 2024 © - all rights reserved
<https://www.phoenixcontact.com>

Phoenix Contact USA
586 Fulling Mill Road
Middletown, PA 17057, United States
(+717) 944-1300
info@phoenixcon.com