

ME MAX 6,2 SC-TBUS 4-4 KMGY - Electronics housing



2869634
<https://www.phoenixcontact.com/pc/products/2869634>

Please be informed that the data shown in this PDF document is generated from our online catalog. Please find the complete data in the user documentation. Our general terms of use for downloads are valid.



DIN rail housing, Complete housing, tall design, with TBUS option, with screw connection, width: 6.3 mm, height: 93.1 mm, depth: 101.2 mm, color: light gray (similar RAL 7035), cross connection: DIN rail connector (optional)

Your advantages

- Easy installation
- Available in overall widths from 6.2 mm ... 90 mm, modular extension possible
- Variety of connection technology
- Can be mounted on the DIN rail
- With DIN-rail-mountable bus connector and power connector system as an option
- Transparent front cover can be swiveled

Commercial data

Item number	2869634
Packing unit	10 pc
Minimum order quantity	1 pc
Product key	ACHABA
Catalog page	Page 683 (C-1-2013)
GTIN	4017918975135
Weight per piece (including packing)	48.23 g
Weight per piece (excluding packing)	40.447 g
Customs tariff number	85369010
Country of origin	DE

ME MAX 6,2 SC-TBUS 4-4 KMGY - Electronics housing



2869634
<https://www.phoenixcontact.com/pc/products/2869634>

Technical data

Notes

Assembly note	Refer to the data sheet for the range in the download area.
Recommendation	Material of contact pads for bus connector, galvanic gold (hard gold)

Product properties

Product type	Complete housing
Housing type	DIN rail housing
Housing series	ME-MAX
Product family	ME MAX 6,2..
Max. number of positions	8 (pitch: 3.5 mm))
Number of rows	4
Type	Complete housing, tall design, with TBUS option
Ventilation openings present	no
Pin layout	Linear pinning

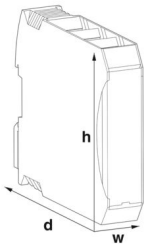
Data management status

Article revision	04
------------------	----

Connection data

Connection method	Screw connection
-------------------	------------------

Dimensions

Dimensional drawing	
Width	6.3 mm
Height	93.1 mm
Depth	101.2 mm
Depth from top edge of DIN rail	95 mm

PCB design

PCB thickness	1.4 mm ... 1.8 mm
---------------	-------------------

Material specifications

Color (Housing)	light gray (RAL 7035)
Flammability rating according to UL 94	V0

ME MAX 6,2 SC-TBUS 4-4 KMGY - Electronics housing



2869634

<https://www.phoenixcontact.com/pc/products/2869634>

CTI according to IEC 60112	600
Housing material	PBT
Surface characteristics	untreated

Environmental and real-life conditions

Ambient conditions

Max. IP code to attain	IP20
Ambient temperature (operation)	-40 °C ... 105 °C (depending on power dissipation)
Ambient temperature (storage/transport)	-40 °C ... 70 °C
Ambient temperature (assembly)	-5 °C ... 100 °C
Relative humidity (storage/transport)	95 %

PCB data

Number of PCB holders	1
Type of PCB mount	Latching
Thickness of the PCB	1.4 mm ... 1.8 mm

Mounting

Mounting type	DIN rail mounting
Pin layout	Linear pinning
Mounting position	Vertical (horizontal DIN rail)

Packaging specifications

Type of packaging	packed in cardboard
Outer packaging type	Carton

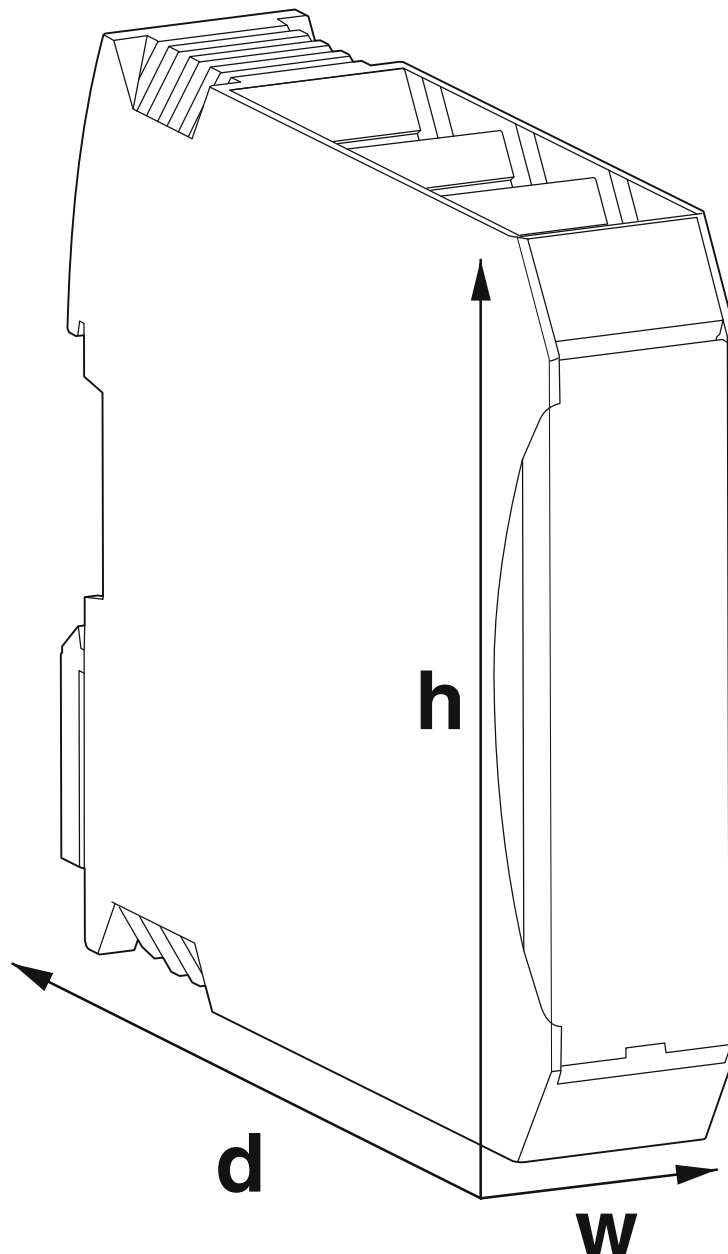
ME MAX 6,2 SC-TBUS 4-4 KMGY - Electronics housing

2869634

<https://www.phoenixcontact.com/pc/products/2869634>

Drawings

Dimensional drawing



Schematic figure for illustrating the item dimensions. The figure is not of the desired product. For further details, refer to the product drawings in the "Downloads" tab.

ME MAX 6,2 SC-TBUS 4-4 KMGY - Electronics housing





2869634

<https://www.phoenixcontact.com/pc/products/2869634>

Approvals

To download certificates, visit the product detail page: <https://www.phoenixcontact.com/pc/products/2869634>

 cUL Recognized Approval ID: FILE E 60425				
	Nominal voltage U_N	Nominal current I_N	Cross section AWG	Cross section mm^2
Use group B				
	300 V	8 A	30 - 12	-
Use group D				
	300 V	8 A	30 - 12	-

 UL Recognized Approval ID: FILE E 60425				
	Nominal voltage U_N	Nominal current I_N	Cross section AWG	Cross section mm^2
Use group B				
	300 V	8 A	30 - 12	-
Use group D				
	300 V	8 A	30 - 12	-

cULus Recognized				
-------------------------	--	--	--	--

ME MAX 6,2 SC-TBUS 4-4 KMGY - Electronics housing



2869634

<https://www.phoenixcontact.com/pc/products/2869634>

Classifications

ECLASS

ECLASS-11.0	27182702
ECLASS-13.0	27190501

ETIM

ETIM 9.0	EC001031
----------	----------

UNSPSC

UNSPSC 21.0	31261500
-------------	----------

ME MAX 6,2 SC-TBUS 4-4 KMGY - Electronics housing



2869634
<https://www.phoenixcontact.com/pc/products/2869634>

Environmental product compliance

EU RoHS	
Fulfills EU RoHS substance requirements	Yes, No exemptions
China RoHS	
Environment friendly use period (EFUP)	EFUP-50
	An article-related China RoHS declaration table can be found in the download area for the respective article under "Manufacturer declaration". For all articles with EFUP-E, no China RoHS declaration table issued and required.
EU REACH SVHC	
REACH candidate substance (CAS No.)	No substance above 0.1 wt%

ME MAX 6,2 SC-TBUS 4-4 KMGY - Electronics housing



2869634

<https://www.phoenixcontact.com/pc/products/2869634>

Accessories

ZBF 6:UNBEDRUCKT - Zack Marker strip, flat

0808710

<https://www.phoenixcontact.com/pc/products/0808710>



Zack Marker strip, flat, Strip, white, unlabeled, can be labeled with: PLOTMARK, CMS-P1-PLOTTER, mounting type: snapped, for terminal block width: 6.2 mm, lettering field size: 5.15 x 6.15 mm, Number of individual labels: 10

X-PEN 0,35 - Marker pen

0811228

<https://www.phoenixcontact.com/pc/products/0811228>



Marker pen without ink cartridge, for manual labeling of markers, labeling extremely wipe-proof, line thickness 0.35 mm

ME MAX 6,2 SC-TBUS 4-4 KMGY - Electronics housing



2869634

<https://www.phoenixcontact.com/pc/products/2869634>

SZF 1-0,6X3,5 - Screwdriver

1204517

<https://www.phoenixcontact.com/pc/products/1204517>

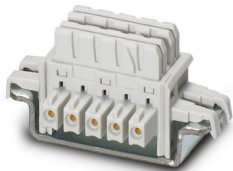


Actuation tool, for ST terminal blocks, also suitable for use as a bladed screwdriver, size: 0.6 x 3.5 x 100 mm, 2-component grip, with non-slip grip

ME 6,2 TBUS-2 1,5/5-ST-3,81KMGY - DIN rail bus connectors

2969401

<https://www.phoenixcontact.com/pc/products/2969401>



DIN rail bus connector for potential bridging of devices arranged next to one another across all modules.

ME MAX 6,2 SC-TBUS 4-4 KMGY - Electronics housing

2869634

<https://www.phoenixcontact.com/pc/products/2869634>

E/ME TBUS NS35 GY - End bracket

2713780

<https://www.phoenixcontact.com/pc/products/2713780>



End clamp, stable construction for DIN rail bus connector

MC 1,5/ 5-ST-3,81 AU - PCB connector

1860883

<https://www.phoenixcontact.com/pc/products/1860883>



PCB connector, nominal cross section: 1.5 mm², color: green, nominal current: 8 A, rated voltage (III/2): 160 V, contact surface: Gold, contact connection type: Socket, number of potentials: 5, number of rows: 1, number of positions: 5, number of connections: 5, product range: MC 1,5/-ST, pitch: 3.81 mm, connection method: Screw connection with tension sleeve, screw head form: L Slotted, conductor/PCB connection direction: 0 °, pin layout: Linear three-way pinning, plug-in system: COMBICON MC 1,5, locking: without, mounting: without, type of packaging: packed in cardboard

ME MAX 6,2 SC-TBUS 4-4 KMGY - Electronics housing



2869634

<https://www.phoenixcontact.com/pc/products/2869634>

IMC 1,5/ 5-ST-3,81 - PCB connector

1857919

<https://www.phoenixcontact.com/pc/products/1857919>



PCB connector, nominal cross section: 1.5 mm², color: green, nominal current: 8 A, rated voltage (III/2): 160 V, contact surface: Tin, contact connection type: Pin, number of potentials: 5, number of rows: 1, number of positions: 5, number of connections: 5, product range: IMC 1,5/...-ST, pitch: 3.81 mm, connection method: Screw connection with tension sleeve, screw head form: L Slotted, conductor/PCB connection direction: 0 °, plug-in system: COMBICON MC 1,5, locking: without, mounting: without, type of packaging: packed in cardboard

Phoenix Contact 2024 © - all rights reserved

<https://www.phoenixcontact.com>

PHOENIX CONTACT GmbH & Co. KG

Flachsmarktstraße 8

D-32825 Blomberg

+49 (0) 5235-3 00

info@phoenixcontact.com