

ST-REL7-KG 24/21-21 - Relay connectors



2892520

<https://www.phoenixcontact.com/us/products/2892520>

Please be informed that the data shown in this PDF document is generated from our online catalog. Please find the complete data in the user documentation. Our general terms of use for downloads are valid.



Relay connector, equipped with miniature switching relay, contacts (AgNi): medium to large loads, 2 changeover contacts, input voltage 24 V AC/DC, with LED display, pluggable into basic terminal blocks

Commercial data

Item number	2892520
Packing unit	1 pc
Note	Made to order (non-returnable)
Sales key	C460
Product key	CK6125
Catalog page	Page 89 (IF-2005)
GTIN	4017918078720
Weight per piece (including packing)	61.33 g
Weight per piece (excluding packing)	61.32 g
Customs tariff number	85364190
Country of origin	DE

ST-REL7-KG 24/21-21 - Relay connectors



2892520

<https://www.phoenixcontact.com/us/products/2892520>

Technical data

Product properties

Product type	Relay Module
Operating mode	100% operating factor
Mechanical service life	approx. 2×10^7 cycles

Electrical properties

Maximum power dissipation for nominal condition	0.41 W
Test voltage (Winding/contact)	2.5 kV AC (50 Hz, 1 min., winding/contact)
Test voltage (Changeover contact/changeover contact)	2 kV AC (50 Hz, 1 min., changeover contact/changeover contact)

Input data

Coil side

Nominal input voltage U_N	24 V AC/DC
Input voltage range	19.2 V AC/DC ... 26.4 V AC/DC
Input voltage range in reference to U_N	0.8 ... 1.1
Drive and function	monostable
Typical input current at U_N	17 mA
Typical response time	9 ms (with DC)
Typical release time	10 ms (with DC)
Protective circuit	Bridge rectifier; Bridge rectifier Surge protection; Varistor
Operating voltage display	yes

Output data

Switching

Contact switching type	Single contact, 2 changeover contacts
Type of switch contact	Single contact
Contact material	AgNi
Maximum switching voltage	250 V AC/DC
Limiting continuous current	5 A
Maximum inrush current	6 A
Interrupting rating (ohmic load) max.	120 W (at 24 V DC) 85 W (at 48 V DC) 60 W (at 60 V DC) 40 W (at 110 V DC) 60 W (at 220 V DC) 1250 VA (for 250 V AC)

Dimensions

Width	45.6 mm
Height	33 mm

ST-REL7-KG 24/21-21 - Relay connectors



2892520

<https://www.phoenixcontact.com/us/products/2892520>

Depth	66.5 mm
-------	---------

Material specifications

Color	green (RAL 6021)
-------	------------------

Environmental and real-life conditions

Ambient conditions

Ambient temperature (operation)	-20 °C ... 50 °C
Ambient temperature (storage/transport)	-20 °C ... 70 °C

Standards and regulations

Standards/regulations	DIN VDE 0110b, Gr. C for 250 V DC
	IEC 60255/DIN VDE 0435 (in relevant parts)
	DIN EN 50178/VDE 0160 (in relevant parts)
	EN 60730/DIN VDE 0631
	DIN VDE 0160 (in relevant parts)

Mounting

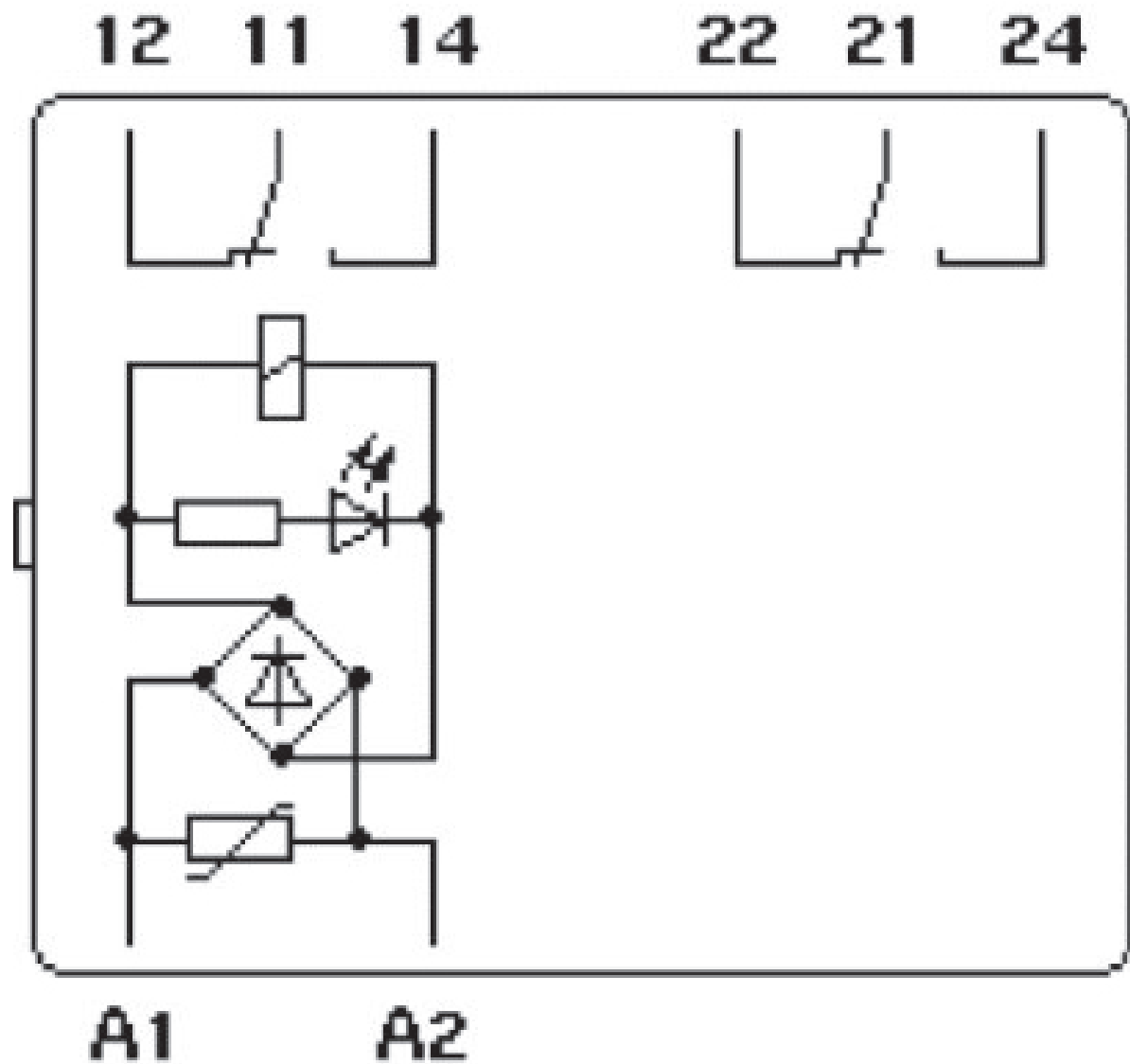
Mounting type	Plug-in mounting
---------------	------------------

2892520

<https://www.phoenixcontact.com/us/products/2892520>

Drawings

Circuit diagram



ST-REL7-KG 24/21-21 - Relay connectors



2892520

<https://www.phoenixcontact.com/us/products/2892520>

Classifications

ECLASS

ECLASS-11.0	27371601
-------------	----------

UNSPSC

UNSPSC 21.0	39122334
-------------	----------

ST-REL7-KG 24/21-21 - Relay connectors



2892520

<https://www.phoenixcontact.com/us/products/2892520>

Environmental product compliance

EU RoHS	
Fulfills EU RoHS substance requirements	Yes
Exemption	7(a)
China RoHS	
Environment friendly use period (EFUP)	EFUP-50
	An article-related China RoHS declaration table can be found in the download area for the respective article under "Manufacturer declaration". For all articles with EFUP-E, no China RoHS declaration table issued and required.
EU REACH SVHC	
REACH candidate substance (CAS No.)	Lead(CAS: 7439-92-1)

ST-REL7-KG 24/21-21 - Relay connectors



2892520

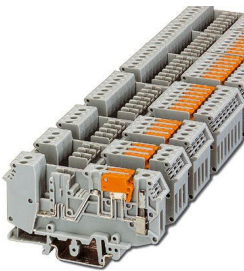
<https://www.phoenixcontact.com/us/products/2892520>

Accessories

URELG 7-PMTK - Basic terminal block

2820725

<https://www.phoenixcontact.com/us/products/2820725>

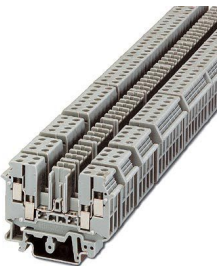


Basic terminal blocks with test pick-off on both sides and knife disconnection for NS 32 and NS 35/7,5 DIN rail, with end cover, for ST-REL..., ST-OV..., and ST-OE... plugs, 7-pos.

UDK-RELG 7 - Basic terminal block

2777069

<https://www.phoenixcontact.com/us/products/2777069>



Basic terminal blocks with test pick-off on both sides and double connections with the same potential for NS 32 and NS 35/7,5 DIN rail, with end cover, for ST-REL..., ST-OV..., and ST-OE... plugs, 7-pos.

ST-REL7-KG 24/21-21 - Relay connectors



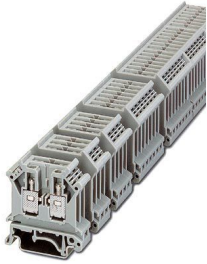
2892520

<https://www.phoenixcontact.com/us/products/2892520>

URELG 7 - Basic terminal block

2820178

<https://www.phoenixcontact.com/us/products/2820178>



Basic termination blocks with screw connection for NS 32 and NS 35/7.5 DIN rail, with end cover, for ST-REL..., ST-OV... and ST-OE... plugs, 7-pos.

Phoenix Contact 2024 © - all rights reserved

<https://www.phoenixcontact.com>

Phoenix Contact USA
586 Fulling Mill Road
Middletown, PA 17057, United States
(+717) 944-1300
info@phoenixcon.com