

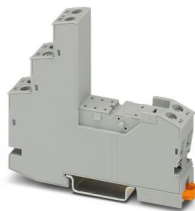
RIF-1-BSC/2X21 - Relay base



2900930

<https://www.phoenixcontact.com/us/products/2900930>

Please be informed that the data shown in this PDF document is generated from our online catalog. Please find the complete data in the user documentation. Our general terms of use for downloads are valid.



RIF-1... relay base, for miniature power relay with 1 or 2 changeover contacts or identical solid-state relays, screw connection, plug-in option for input/interference suppression modules, for mounting on NS 35/7,5

Commercial data

Item number	2900930
Packing unit	10 pc
Minimum order quantity	10 pc
Sales key	C465
Product key	CK6512
Catalog page	Page 289 (C-5-2019)
GTIN	4046356733137
Weight per piece (including packing)	50.8 g
Weight per piece (excluding packing)	45 g
Customs tariff number	85366990
Country of origin	CN

RIF-1-BSC/2X21 - Relay base



2900930

<https://www.phoenixcontact.com/us/products/2900930>

Technical data

Notes

General	FBS 2-6... plug-in bridge for the input side (A2) and FBS-2-8... plug-in bridge for the output side (11/21)
---------	---

Product properties

Product type	Relay socket
Product family	RIFLINE complete

Electrical properties

Nominal voltage U_N	250 V AC/DC
Nominal current I_N	max. 15.5 A (Depends on application/assembly)
Protective circuit	depending on the selected input/suppressor modules

Connection data

Connection method	Screw connection
Stripping length	8 mm
Conductor cross section rigid	0.5 mm ² ... 4 mm ²
Conductor cross-section rigid (2 conductors with same cross section)	0.5 mm ² ... 2.5 mm ²
Conductor cross section flexible	0.5 mm ² ... 4 mm ²
	0.5 mm ² ... 4 mm ² (Ferrule with plastic sleeve)
Conductor cross section flexible (2 conductors with same cross section)	0.5 mm ² ... 2.5 mm ²
	0.5 mm ² ... 1.5 mm ² (TWIN ferrule with plastic sleeve)
Conductor cross section AWG	20 ... 10 (solid)
	20 ... 12 (flexible)
Tightening torque	0.5 Nm ... 0.6 Nm

Dimensions

Width	16 mm
Height	89 mm
Depth Retaining bracket	75 mm (with retaining bracket)

Material specifications

Color	gray (RAL 7042)
Flammability rating according to UL 94	V2 (Housing)

Environmental and real-life conditions

Ambient conditions

Ambient temperature (operation)	-40 °C ... 85 °C (Depends on application/assembly)
Ambient temperature (storage/transport)	-40 °C ... 85 °C

Approvals

RIF-1-BSC/2X21 - Relay base



2900930

<https://www.phoenixcontact.com/us/products/2900930>

Corrosive gas test

Identification	ISA-S71.04. G3 Harsh Group
	EN 60068-2-60

Mounting

Mounting type	DIN rail mounting
Mounting position	any

Phoenix Contact 2024 © - all rights reserved
<https://www.phoenixcontact.com>

Phoenix Contact USA
586 Fulling Mill Road
Middletown, PA 17057, United States
(+717) 944-1300
info@phoenixcon.com