

# EM-RS232-GATEWAY-IFS - Data interface



2901526

<https://www.phoenixcontact.com/us/products/2901526>

Please be informed that the data shown in this PDF document is generated from our online catalog. Please find the complete data in the user documentation. Our general terms of use for downloads are valid.



Gateway for the connection of up to 32 INTERFACE system devices to a higher-level controller via Modbus/RS-232. The INTERFACE system devices are connected to the Gateway via DIN rail connectors, the DIN rail connectors are provided.

## Commercial data

Item number	2901526
Packing unit	1 pc
Note	Made to order (non-returnable)
Sales key	C477
Product key	CK7724
Catalog page	Page 16 (C-5-2017)
GTIN	4046356607070
Weight per piece (including packing)	196.1 g
Weight per piece (excluding packing)	196.1 g
Customs tariff number	85389091
Country of origin	DE

## Technical data

### Product properties

Product type	Gateways/Proxies
Operating mode	100% operating factor

### Data management status

Article revision	01
------------------	----

### Insulation characteristics

Overvoltage category	III
Pollution degree	2

### Electrical properties

#### Supply

Rated control circuit supply voltage $U_S$	24 V DC -20 % ... +25 %
Rated control supply current $I_S$	85 mA (plus load current of the outputs)
Protective circuit	Reverse polarity protection
	Surge protection

### Input data

#### Digital

Number	8
Rated actuating voltage $U_C$	24 V DC $\pm 20$ %
Rated actuating current $I_C$	3 mA
Protective circuit	Reverse polarity protection
	Surge protection

### Output data

#### Digital: Switching outputs

Number	4
Residual voltage	1 V
Maximum switching voltage	23 V DC ( $U_B - U_{\text{resid.}}$ of the output)
Max. switching current	500 mA
Protective circuit	Parallel protection against polarity reversal, pay attention to the fuse (Fusing with max. 8 A F-fuse)

### Connection data

#### Supply

Connection method	Screw connection
Stripping length	8 mm
Screw thread	M3
Conductor cross section rigid	0.2 mm <sup>2</sup> ... 2 mm <sup>2</sup>

# EM-RS232-GATEWAY-IFS - Data interface



2901526

<https://www.phoenixcontact.com/us/products/2901526>

Conductor cross section flexible	0.2 mm² ... 2.5 mm²
Conductor cross section AWG	24 ... 12

## Programming connection

Connection method	S-PORT (socket)
Number of connections	1
Number of positions	12

## INTERFACE system

Connection method	DIN rail bus connectors
Number of connections	1
Number of positions	5

## RS-232

Connection method	Screw connection
Number of connections	1
Number of positions	4

## Interfaces

### Data: Interface-System

Data rate	76800 Baud
Serial transmission speed	76.8 kbps
Connection method	DIN rail bus connectors
	S-PORT (male connector)

### Data: RS-232

Serial transmission speed	9.6 k ... 115 kbaud
Connection method	MSTB plug entry

### Data: Network interface

Communication protocol	RS-232
Connection method	Screw connection
Number of connections	1
Number of positions	4

### Data: Service interface

Communication protocol	INTERFACE-System
Connection method	S-PORT (socket)
Number of connections	1
Number of positions	12

### Data: Device bus

Communication protocol	INTERFACE-System
Connection method	DIN rail bus connectors
Number of connections	1
Number of positions	5
Transmission speed	76.8 kbps

## Dimensions

Width	22.5 mm
Height	99 mm
Depth	114.5 mm

## Material specifications

Color	green (RAL 6021)
Housing material	Polyamide PA non-reinforced

## Environmental and real-life conditions

### Ambient conditions

Degree of protection	IP20
Ambient temperature (operation)	-25 °C ... 50 °C
Ambient temperature (storage/transport)	-35 °C ... 80 °C

## Standards and regulations

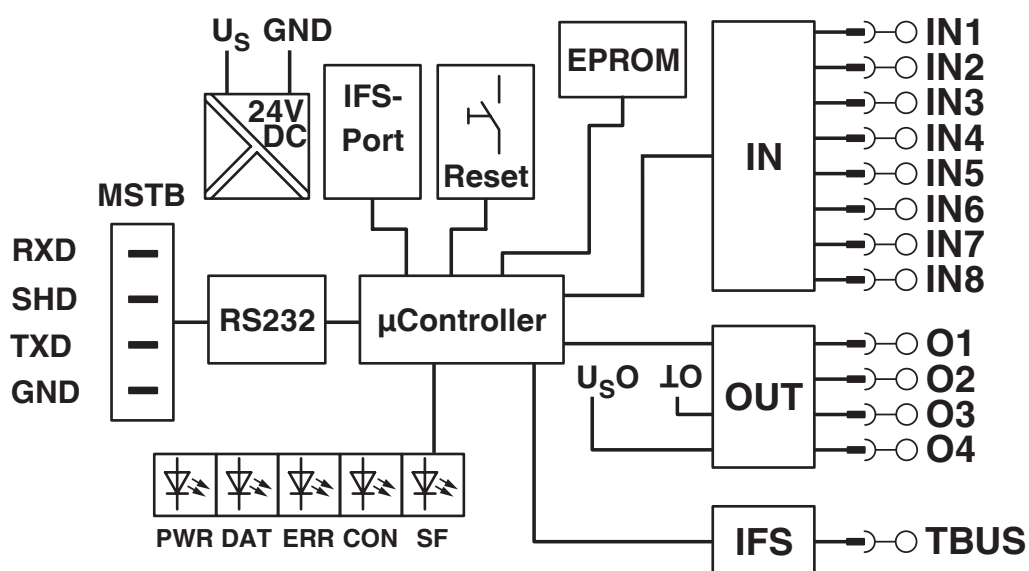
Standards/regulations	EN 50178
-----------------------	----------

## Mounting

Mounting type	DIN rail mounting
Assembly note	in rows with zero spacing
Mounting position	any

## Drawings

Block diagram

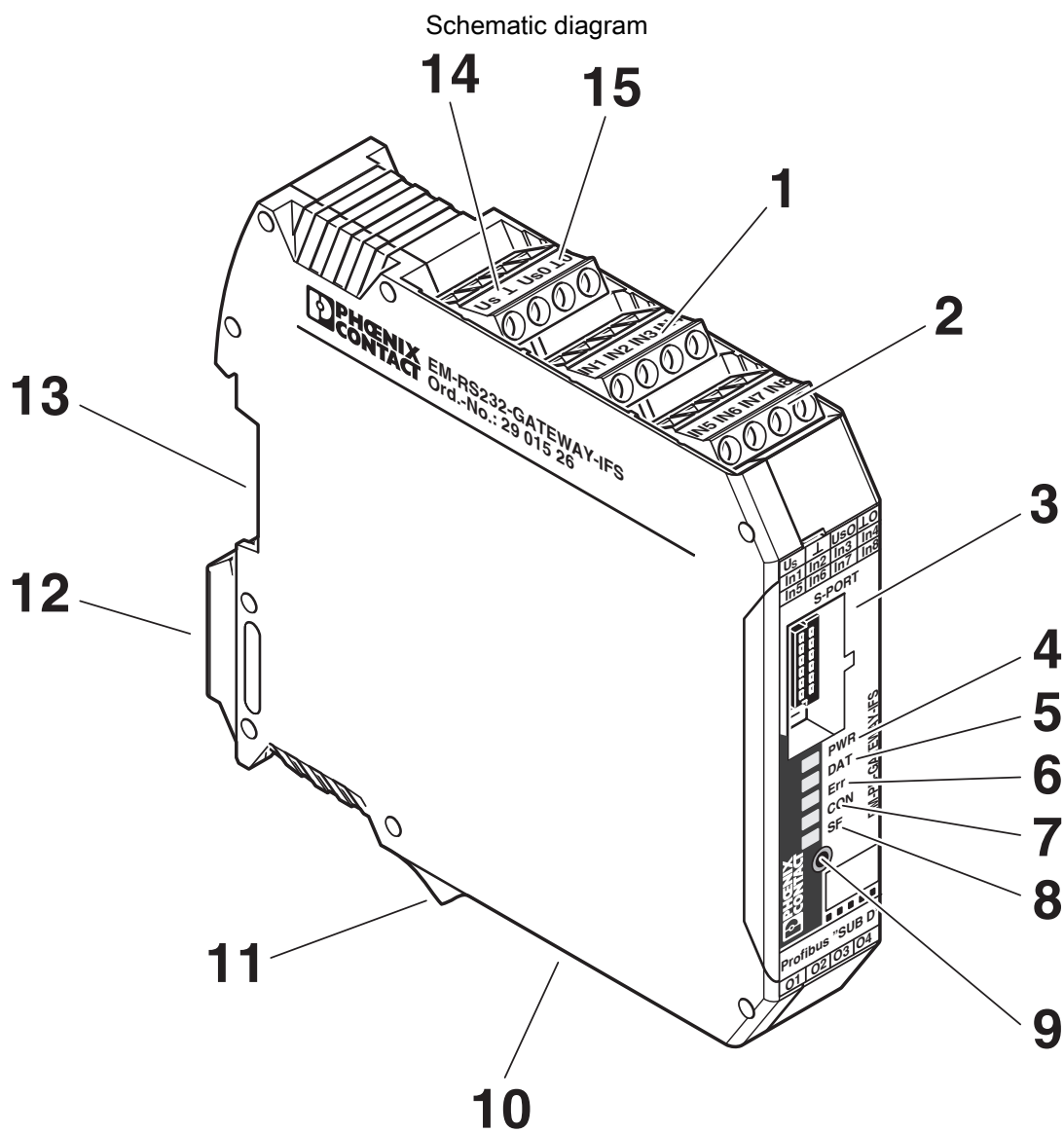


# EM-RS232-GATEWAY-IFS - Data interface



2901526

<https://www.phoenixcontact.com/us/products/2901526>



Environmental product compliance

EU RoHS	
Fulfills EU RoHS substance requirements	Yes
Exemption	7(a), 7(c)-I
China RoHS	
Environment friendly use period (EFUP)	EFUP-50
	An article-related China RoHS declaration table can be found in the download area for the respective article under "Manufacturer declaration". For all articles with EFUP-E, no China RoHS declaration table issued and required.
EU REACH SVHC	
REACH candidate substance (CAS No.)	Lead(CAS: 7439-92-1)

# EM-RS232-GATEWAY-IFS - Data interface



2901526

<https://www.phoenixcontact.com/us/products/2901526>

## Mandatory accessories

### IFS-USB-DATACABLE - Data cable

2320500

<https://www.phoenixcontact.com/us/products/2320500>

Used for communicating between industrial PCs and Phoenix Contact devices with the 12-pos. IFS data port, such as QUINT UPS or TRIO UPS.



---

## Accessories

### IFS-CONFSTICK-L - Memory block

2901103

<https://www.phoenixcontact.com/us/products/2901103>

Multi-functional memory block with handle for the INTERFACE system; for easy storage and back up of the configuration.





# EM-RS232-GATEWAY-IFS - Data interface



2901526

<https://www.phoenixcontact.com/us/products/2901526>

## IFS-CONFSTICK - Memory block

2986122

<https://www.phoenixcontact.com/us/products/2986122>



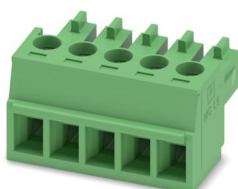
Multi-functional memory block for the INTERFACE systemf for easy storage and backup of the configuration.

---

## MC 1,5/ 5-ST-3,81 - PCB connector

1803604

<https://www.phoenixcontact.com/us/products/1803604>



PCB connector, nominal cross section: 1.5 mm<sup>2</sup>, color: green, nominal current: 8 A, rated voltage (III/2): 160 V, contact surface: Sn, contact connection type: Socket, number of potentials: 5, number of rows: 1, number of positions: 5, number of connections: 5, product range: MC 1,5/-ST, pitch: 3.81 mm, connection method: Screw connection with tension sleeve, screw head form: L Slotted, conductor/PCB connection direction: 0 °, plug-in system: COMBICON MC 1,5, locking: without, mounting: without, type of packaging: packed in cardboard

# EM-RS232-GATEWAY-IFS - Data interface



2901526

<https://www.phoenixcontact.com/us/products/2901526>

## IMC 1,5/ 5-ST-3,81 - PCB connector

1857919

<https://www.phoenixcontact.com/us/products/1857919>



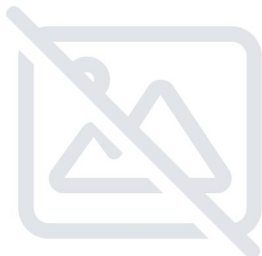
PCB connector, nominal cross section: 1.5 mm<sup>2</sup>, color: green, nominal current: 8 A, rated voltage (III/2): 160 V, contact surface: Sn, contact connection type: Pin, number of potentials: 5, number of rows: 1, number of positions: 5, number of connections: 5, product range: IMC 1,5/...-ST, pitch: 3.81 mm, connection method: Screw connection with tension sleeve, screw head form: L Slotted, conductor/PCB connection direction: 0 °, plug-in system: COMBICON MC 1,5, locking: without, mounting: without, type of packaging: packed in cardboard

---

## IMC 1,5/ 5-ST-3,81SET IL IFS 2M - Plug

1784729

<https://www.phoenixcontact.com/us/products/1784729>



Assembled connecting cable, IL-IFS, 2 m in length

# EM-RS232-GATEWAY-IFS - Data interface



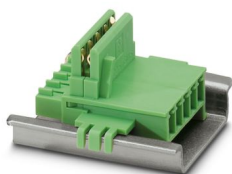
2901526

<https://www.phoenixcontact.com/us/products/2901526>

## ME 22,5 TBUS 1,5/ 5-ST-3,81 GN - DIN rail bus connectors

2707437

<https://www.phoenixcontact.com/us/products/2707437>



DIN rail connector, color: green, nominal current: 8 A (parallel contacts), rated voltage (III/2): 125 V, number of positions: 5, product range: TBUS5-22,5..., pitch: 3.81 mm, mounting: DIN rail mounting, locking: without, mounting: without, type of packaging: packed in cardboard, Item with gold-plated contacts, bus connectors for connecting with electronics housings, 5 parallel contacts

---

## IFS-BT-PROG-ADAPTER - Adapter

2905872

<https://www.phoenixcontact.com/us/products/2905872>



Bluetooth adapter with micro USB and S-PORT interface for wireless communication with the MINI Analog, MINI Analog Pro, MACX Analog, Interface System Gateways, and PLC logic device series.

# EM-RS232-GATEWAY-IFS - Data interface



2901526

<https://www.phoenixcontact.com/us/products/2901526>

## US-EMLP (15X5) - Plastic label

0828790

<https://www.phoenixcontact.com/us/products/0828790>



Plastic label, Card, white, unlabeled, can be labeled with: BLUEMARK ID COLOR, BLUEMARK ID, THERMOMARK PRIME, THERMOMARK CARD 2.0, THERMOMARK CARD, mounting type: adhesive, lettering field size: 15 x 5 mm, Number of individual labels: 189

---

## UC-EMLP (15X5) - Plastic label

0819301

<https://www.phoenixcontact.com/us/products/0819301>



Plastic label, Sheet, white, unlabeled, can be labeled with: BLUEMARK ID COLOR, BLUEMARK ID, BLUEMARK CLED, PLOTMARK, CMS-P1-PLOTTER, mounting type: adhesive, lettering field size: 15 x 5 mm, Number of individual labels: 10

# EM-RS232-GATEWAY-IFS - Data interface



2901526

<https://www.phoenixcontact.com/us/products/2901526>

## EM-D-8/4-24DC-IFS - Extension module

2904473

<https://www.phoenixcontact.com/us/products/2904473>



For more complex applications with Interface system devices (IFS), the extension module offers digital inputs and outputs for processing additional signals in the field. Easy connection to IFS gateway via the DIN rail connector as the slave.

---

Phoenix Contact 2024 © - all rights reserved

<https://www.phoenixcontact.com>

Phoenix Contact USA  
586 Fulling Mill Road  
Middletown, PA 17057, United States  
(+717) 944-1300  
[info@phoenixcon.com](mailto:info@phoenixcon.com)