

EM-DNET-GATEWAY-IFS - Data interface



2901529
<https://www.phoenixcontact.com/us/products/2901529>

Please be informed that the data shown in this PDF document is generated from our online catalog. Please find the complete data in the user documentation. Our general terms of use for downloads are valid.



Gateway for the connection of up to 32 INTERFACE system devices to a higher-level controller via DeviceNet™. The INTERFACE system devices are connected to the Gateway via DIN rail connectors, the DIN rail connectors are provided.

Commercial data

Item number	2901529
Packing unit	1 pc
Note	Made to order (non-returnable)
Sales key	C477
Product key	CK7723
Catalog page	Page 16 (C-5-2017)
GTIN	4046356607094
Weight per piece (including packing)	203.3 g
Weight per piece (excluding packing)	203.3 g
Customs tariff number	85389091
Country of origin	DE

Technical data

Product properties

Product type	Gateways/Proxies
Operating mode	100% operating factor

Insulation characteristics

Overvoltage category	III
Pollution degree	2

Electrical properties

Supply

Rated control circuit supply voltage U_S	24 V DC -20 % ... +25 %
Rated control supply current I_S	85 mA (plus load current of the outputs)
Protective circuit	Reverse polarity protection
	Surge protection

Input data

Digital

Number	8
Rated actuating voltage U_C	24 V DC ± 20 %
Rated actuating current I_C	3 mA
Protective circuit	Reverse polarity protection
	Surge protection

Output data

Digital: Switching outputs

Number	4
Residual voltage	1 V
Maximum switching voltage	23 V DC ($U_B - U_{\text{resid.}}$ of the output)
Max. switching current	500 mA
Protective circuit	Parallel protection against polarity reversal, pay attention to the fuse (Fusing with max. 8 A F-fuse)

Connection data

Supply

Connection method	Screw connection
Stripping length	8 mm
Screw thread	M3
Conductor cross section rigid	0.2 mm ² ... 2 mm ²
Conductor cross section flexible	0.2 mm ² ... 2.5 mm ²
Conductor cross section AWG	24 ... 12

Programming connection

Connection method	S-PORT (socket)
Number of connections	1
Number of positions	12

INTERFACE system

Connection method	DIN rail bus connectors
Number of connections	1
Number of positions	5

DeviceNet™

Connection method	Screw connection
Number of connections	1
Number of positions	5

Interfaces

Data: Interface-System

Data rate	76800 Baud
Serial transmission speed	76.8 kbps
Connection method	DIN rail bus connectors
	S-PORT (male connector)

Data: DeviceNet™

Serial transmission speed	125; 250; 500 kbaud
Connection method	MSTB plug entry

Data: Network interface

Communication protocol	DeviceNet™
Connection method	Screw connection
Number of connections	1
Number of positions	5

Data: Service interface

Communication protocol	INTERFACE-System
Connection method	S-PORT (socket)
Number of connections	1
Number of positions	12

Data: Device bus

Communication protocol	INTERFACE-System
Connection method	DIN rail bus connectors
Number of connections	1
Number of positions	5
Transmission speed	76.8 kbps

Dimensions

EM-DNET-GATEWAY-IFS - Data interface



2901529

<https://www.phoenixcontact.com/us/products/2901529>

Width	22.5 mm
Height	112.7 mm
Depth	113.8 mm

Material specifications

Color	gray (RAL 7042)
Housing material	Polyamide PA non-reinforced

Environmental and real-life conditions

Ambient conditions

Degree of protection	IP20
Ambient temperature (operation)	-25 °C ... 50 °C
Ambient temperature (storage/transport)	-35 °C ... 80 °C

Standards and regulations

Standards/regulations	EN 50178
-----------------------	----------

Mounting

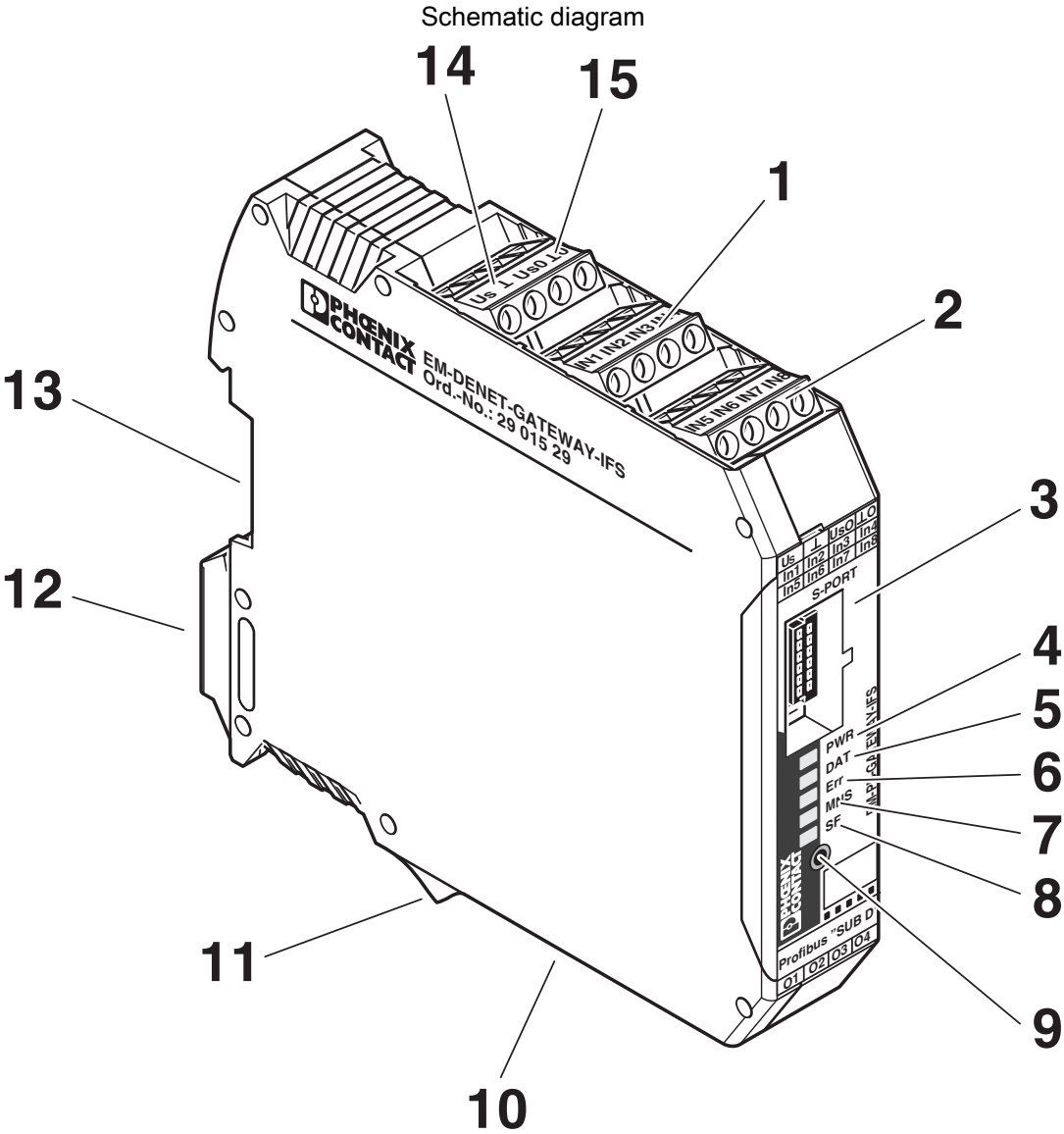
Mounting type	DIN rail mounting
Assembly instructions	in rows with zero spacing
Mounting position	any

EM-DNET-GATEWAY-IFS - Data interface

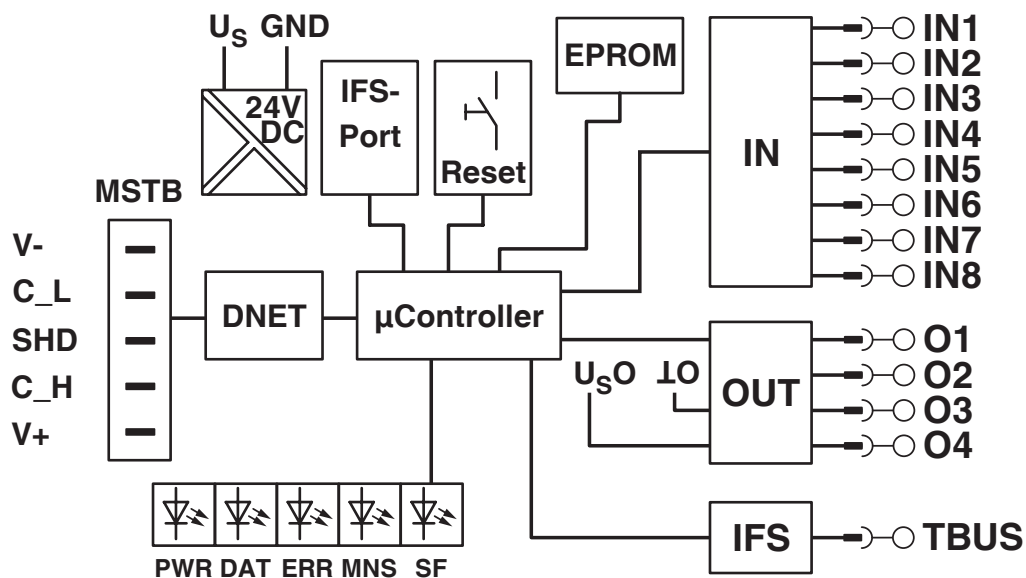


2901529
<https://www.phoenixcontact.com/us/products/2901529>

Drawings



Block diagram



Environmental product compliance

China RoHS	Environmentally Friendly Use Period = 50 years
	For information on hazardous substances, refer to the manufacturer's declaration available under "Downloads"

EM-DNET-GATEWAY-IFS - Data interface



2901529

<https://www.phoenixcontact.com/us/products/2901529>

Mandatory accessories

IFS-USB-DATACABLE - Data cable

2320500

<https://www.phoenixcontact.com/us/products/2320500>

Used for communicating between industrial PCs and Phoenix Contact devices with the 12-pos. IFS data port, such as QUINT UPS or TRIO UPS.



Accessories

IFS-CONFSTICK-L - Memory block

2901103

<https://www.phoenixcontact.com/us/products/2901103>

Multi-functional memory block with handle for the INTERFACE system; for easy storage and back up of the configuration.



EM-DNET-GATEWAY-IFS - Data interface



2901529

<https://www.phoenixcontact.com/us/products/2901529>

IFS-CONFSTICK - Memory block

2986122

<https://www.phoenixcontact.com/us/products/2986122>

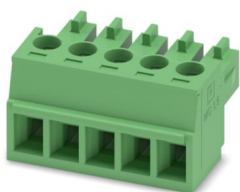


Multi-functional memory block for the INTERFACE systemf for easy storage and backup of the configuration.

MC 1,5/ 5-ST-3,81 - PCB connector

1803604

<https://www.phoenixcontact.com/us/products/1803604>



PCB connector, nominal cross section: 1.5 mm², color: green, nominal current: 8 A, rated voltage (III/2): 160 V, contact surface: Tin, contact connection type: Socket, number of potentials: 5, number of rows: 1, number of positions: 5, number of connections: 5, product range: MC 1,5/-ST, pitch: 3.81 mm, connection method: Screw connection with tension sleeve, screw head form: L Slotted, conductor/PCB connection direction: 0 °, plug-in system: COMBICON MC 1,5, locking: without, mounting: without, type of packaging: packed in cardboard

EM-DNET-GATEWAY-IFS - Data interface



2901529

<https://www.phoenixcontact.com/us/products/2901529>

IMC 1,5/ 5-ST-3,81 - Printed-circuit board connector

1857919

<https://www.phoenixcontact.com/us/products/1857919>



PCB connector, nominal cross section: 1.5 mm², color: green, nominal current: 8 A, rated voltage (III/2): 160 V, contact surface: Tin, contact connection type: Pin, number of potentials: 5, number of rows: 1, number of positions: 5, number of connections: 5, product range: IMC 1,5/...-ST, pitch: 3.81 mm, connection method: Screw connection with tension sleeve, screw head form: L Slotted, conductor/PCB connection direction: 0 °, plug-in system: COMBICON MC 1,5, locking: without, mounting: without, type of packaging: packed in cardboard

IMC 1,5/ 5-ST-3,81SET IL IFS 2M - Plug

1784729

<https://www.phoenixcontact.com/us/products/1784729>



Assembled connecting cable, IL-IFS, 2 m in length

EM-DNET-GATEWAY-IFS - Data interface



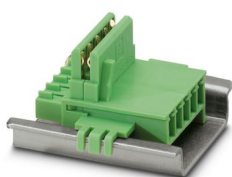
2901529

<https://www.phoenixcontact.com/us/products/2901529>

ME 22,5 TBUS 1,5/ 5-ST-3,81 GN - DIN rail bus connectors

2707437

<https://www.phoenixcontact.com/us/products/2707437>



DIN rail connector, color: green, nominal current: 8 A (parallel contacts), rated voltage (III/2): 125 V, number of positions: 5, pitch: 3.81 mm, mounting: DIN rail mounting, locking: without, mounting: without, type of packaging: packed in cardboard, Item with gold-plated contacts, bus connectors for connecting with electronics housings, 5 parallel contacts

IFS-BT-PROG-ADAPTER - Adapter

2905872

<https://www.phoenixcontact.com/us/products/2905872>



Bluetooth adapter with micro USB and S-PORT interface for wireless communication with the MINI Analog, MINI Analog Pro, MACX Analog, Interface System Gateways, and PLC logic device series.

EM-DNET-GATEWAY-IFS - Data interface



2901529

<https://www.phoenixcontact.com/us/products/2901529>

US-EMLP (15X5) - Plastic label

0828790

<https://www.phoenixcontact.com/us/products/0828790>



Plastic label, Card, white, unlabeled, can be labeled with: BLUEMARK ID COLOR, BLUEMARK ID, THERMOMARK PRIME, THERMOMARK CARD 2.0, THERMOMARK CARD, mounting type: adhesive, lettering field size: 15 x 5 mm, Number of individual labels: 189

UC-EMLP (15X5) - Plastic label

0819301

<https://www.phoenixcontact.com/us/products/0819301>



Plastic label, Sheet, white, unlabeled, can be labeled with: BLUEMARK ID COLOR, BLUEMARK ID, BLUEMARK CLED, PLOTMARK, CMS-P1-PLOTTER, mounting type: adhesive, lettering field size: 15 x 5 mm, Number of individual labels: 10

EM-DNET-GATEWAY-IFS - Data interface



2901529

<https://www.phoenixcontact.com/us/products/2901529>

EM-D-8/4-24DC-IFS - Extension module

2904473

<https://www.phoenixcontact.com/us/products/2904473>



For more complex applications with Interface system devices (IFS), the extension module offers digital inputs and outputs for processing additional signals in the field. Easy connection to IFS gateway via the DIN rail connector as the slave.

Phoenix Contact 2024 © - all rights reserved

<https://www.phoenixcontact.com>

Phoenix Contact USA
586 Fulling Mill Road
Middletown, PA 17057, United States
(+717) 944-1300
info@phoenixcon.com