

MINI MCR-SL-FM-RC-NC - Monitoring block



2902961
<https://www.phoenixcontact.com/us/products/2902961>

Please be informed that the data shown in this PDF document is generated from our online catalog. Please find the complete data in the user documentation. Our general terms of use for downloads are valid.



The fault monitoring module is used to evaluate and report group errors from the fault monitoring system and to monitor the supply voltages. The error is reported via an N/O contact. Screw connection, standard configuration.

Product description

The MINI MCR-SL-FM-RO-(SP) fault monitoring module is used to evaluate and report group errors from the fault monitoring system. It can be used to monitor the supply voltages of a MINI MCR-SL-PTB-FM-(-SP) power terminal block (Item No. 2902958, 2902959). It also offers the option of detecting and reporting errors from MINI Analog measuring transducers which support fault monitoring and are connected to the fault monitoring module via the ME 6,2 TBUS-2 DIN rail connector (Item No. 2869728). Drawing off the supply is also possible. The error message is reported via an N/C contact. A maximum of 80 measuring transducers can be monitored as a group.

Commercial data

Item number	2902961
Packing unit	1 pc
Minimum order quantity	1 pc
Sales key	C403
Product key	CK12ZZ
Catalog page	Page 524 (C-5-2017)
GTIN	4046356702850
Weight per piece (including packing)	95.2 g
Weight per piece (excluding packing)	81.7 g
Customs tariff number	85369010
Country of origin	DE

MINI MCR-SL-FM-RC-NC - Monitoring block



2902961

<https://www.phoenixcontact.com/us/products/2902961>

Technical data

Notes

Utilization restriction

EMC note	EMC: class A product, see manufacturer's declaration in the download area
----------	---

Product properties

Product type	Evaluation unit
Product family	MINI Analog
Configuration	DIP switches

Data management status

Article revision	08
------------------	----

Insulation characteristics

Overvoltage category	II
Pollution degree	2

System properties

Functionality

Configuration	DIP switches
---------------	--------------

Electrical properties

Maximum temperature coefficient	< 0.01 %/K
---------------------------------	------------

Electrical isolation Input/output

Electrical isolation	Input, power supply and output to the switching output
Rated insulation voltage	50 V AC/DC
Test voltage	1.5 kV AC (50 Hz, 60 s)
Insulation	Basic insulation in accordance with IEC/EN 61010

Supply

Supply voltage range	9.6 V DC ... 30 V DC (The DIN rail connector (ME 6,2 TBUS-2 1,5/5-ST-3,81 GN, item no. 2869728) can be used to bridge the supply voltage. It can be snapped onto a 35 mm DIN rail in accordance with EN 60715)
Max. current consumption	< 5 mA (at 24 V DC)
Power consumption	< 120 mW (at 24 V DC)

Input data

Signal: Voltage

Description of the input	Voltage input for redundancy monitoring
Voltage input signal	9.6 V DC ... 30 V DC

MINI MCR-SL-FM-RC-NC - Monitoring block



2902961

<https://www.phoenixcontact.com/us/products/2902961>

Output data

Switching: Relay

Maximum switching voltage	30 V AC/DC
Max. switching current	50 mA

Signal

Voltage output signal	8.8 V DC ... 29.2 V DC
Max. current output signal	2 A

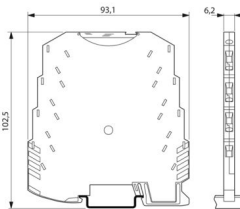
Connection data

Connection method	Screw connection
Stripping length	12 mm
Screw thread	M3
Conductor cross section rigid	0.2 mm ² ... 2.5 mm ²
Conductor cross section flexible	0.2 mm ² ... 2.5 mm ²
Conductor cross section AWG	26 ... 12

Signaling

Status display	Yellow LED (switching output)
Error indication	Red LED

Dimensions

Dimensional drawing	
Width	6.2 mm
Height	93.1 mm
Depth	101.2 mm

Material specifications

Color	green (RAL 6021)
Housing material	PBT
Fire protection for rail vehicles (DIN EN 45545-2) R22	HL 1 - HL 2
Fire protection for rail vehicles (DIN EN 45545-2) R23	HL 1 - HL 2
Fire protection for rail vehicles (DIN EN 45545-2) R24	HL 1 - HL 2

Environmental and real-life conditions

Ambient conditions

Degree of protection	IP20
----------------------	------

MINI MCR-SL-FM-RC-NC - Monitoring block



2902961

<https://www.phoenixcontact.com/us/products/2902961>

Ambient temperature (operation)	-20 °C ... 65 °C
Ambient temperature (storage/transport)	-40 °C ... 85 °C
Altitude	≤ 2000 m
Permissible humidity (operation)	5 % ... 95 % (non-condensing)

Approvals

CE

Certificate	CE-compliant
-------------	--------------

UKCA

Certificate	UKCA-compliant
-------------	----------------

UL, USA/Canada

Identification	UL 508 Listed
	Class I, Div. 2, Groups A, B, C, D T4
	Class I, Zone 2, Group IIC

Shipbuilding approval

Certificate	DNV GL TAA00002R0
-------------	-------------------

DNV GL data

Temperature	B
Humidity	B
Vibration	B
EMC	A
Enclosure	Required protection according to the Rules shall be provided upon installation on board

EMC data

Noise immunity	EN 61000-6-2
Note	When being exposed to interference, there may be minimal deviations.
Electromagnetic compatibility	Conformance with EMC directive
Noise emission	EN 61000-6-4

Electrostatic discharge

Standards/regulations	EN 61000-4-2
-----------------------	--------------

Electrostatic discharge

Comments	Safety measures must be taken to prevent electrostatic discharge.
----------	---

Electromagnetic HF field

Designation	Electromagnetic RF field
Standards/regulations	EN 61000-4-3
Typical deviation from the measuring range final value	0.5 %

Electromagnetic HF field

MINI MCR-SL-FM-RC-NC - Monitoring block



2902961

<https://www.phoenixcontact.com/us/products/2902961>

Comments	Criterion A
----------	-------------

Fast transients (burst)

Designation	Fast transients (burst)
Standards/regulations	EN 61000-4-4
Typical deviation from the measuring range final value	2 %

Fast transients (burst)

Comments	Criterion B
----------	-------------

Surge current load (surge)

Standards/regulations	EN 61000-4-5
-----------------------	--------------

Surge current load (surge)

Comments	Criterion B
----------	-------------

Conducted interference

Designation	Conducted interferences
Standards/regulations	EN 61000-4-6
Typical deviation from the measuring range final value	0.5 %

Conducted interference

Comments	Criterion A
----------	-------------

Mounting

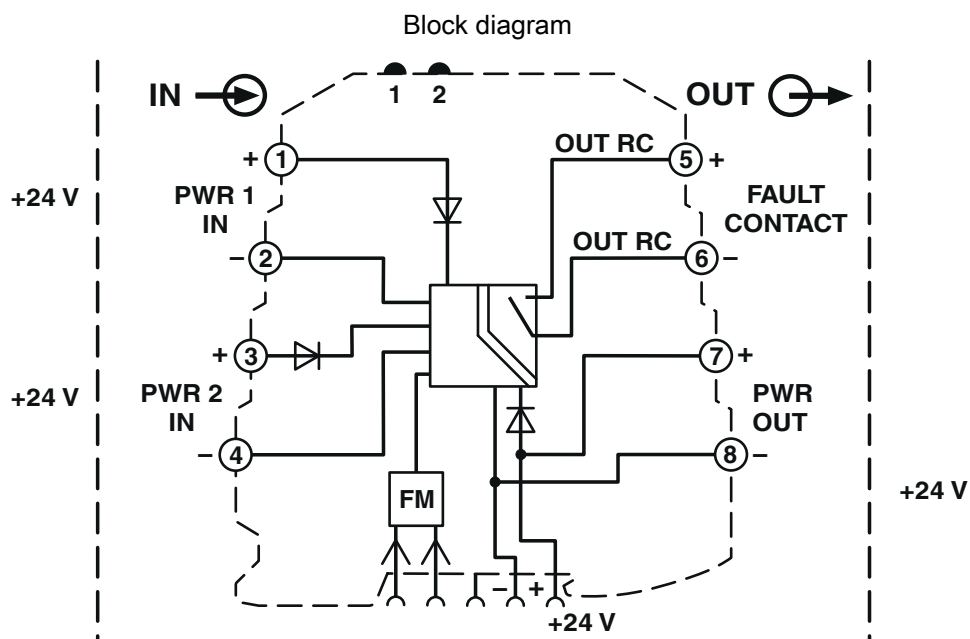
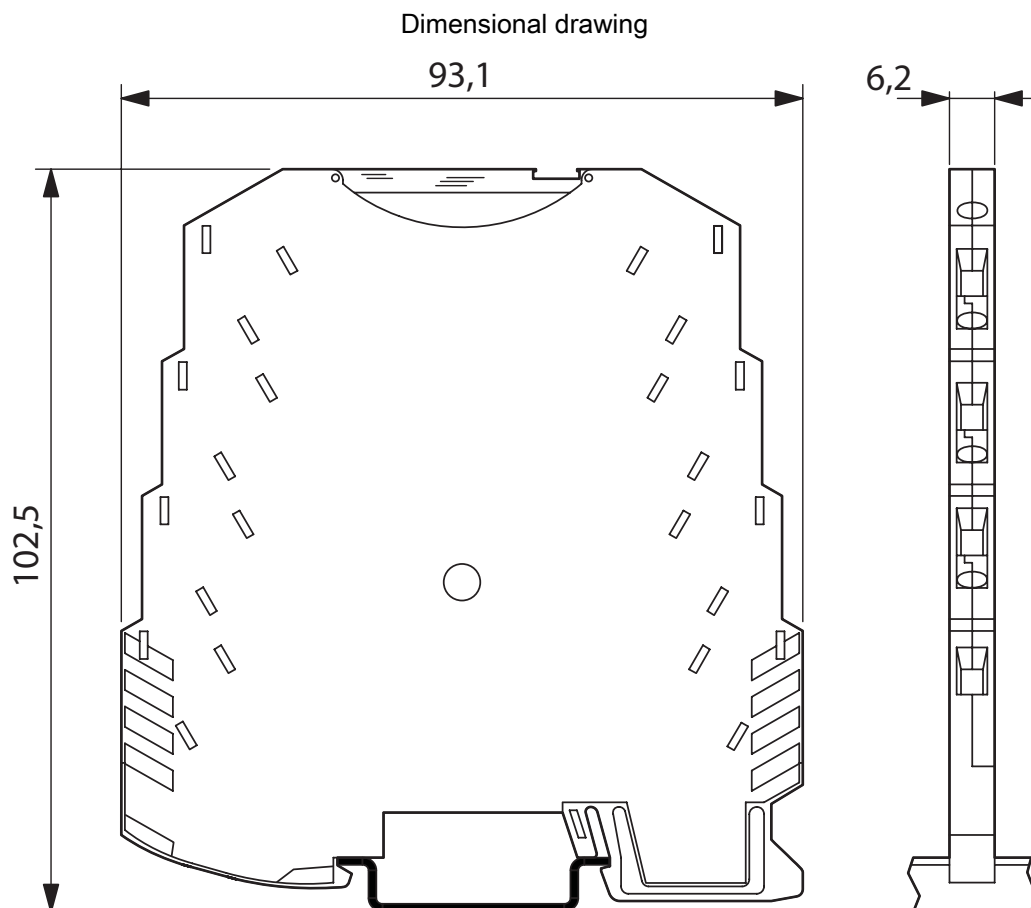
Mounting type	DIN rail mounting
Mounting position	any

MINI MCR-SL-FM-RC-NC - Monitoring block

2902961

<https://www.phoenixcontact.com/us/products/2902961>

Drawings



MINI MCR-SL-FM-RC-NC - Monitoring block




2902961


<https://www.phoenixcontact.com/us/products/2902961>

Approvals


To download certificates, visit the product detail page: <https://www.phoenixcontact.com/us/products/2902961>




DNV GL
Approval ID: TAA00002R0




UL Listed
Approval ID: FILE E 238705



cUL Listed
Approval ID: FILE E 238705



cUL Listed
Approval ID: FILE E 199827



UL Listed
Approval ID: FILE E 199827

cULus Listed

cULus Listed

MINI MCR-SL-FM-RC-NC - Monitoring block



2902961

<https://www.phoenixcontact.com/us/products/2902961>

Classifications

ECLASS

ECLASS-11.0	27371392
ECLASS-12.0	27371392
ECLASS-13.0	27371392

ETIM

ETIM 9.0	EC002498
----------	----------

UNSPSC

UNSPSC 21.0	39121100
-------------	----------

Environmental product compliance

EU RoHS	
Fulfills EU RoHS substance requirements	Yes
Exemption	7(a), 7(c)-I
China RoHS	
Environment friendly use period (EFUP)	EFUP-50
	An article-related China RoHS declaration table can be found in the download area for the respective article under "Manufacturer declaration". For all articles with EFUP-E, no China RoHS declaration table issued and required.
EU REACH SVHC	
REACH candidate substance (CAS No.)	Lead(CAS: 7439-92-1)
SCIP	d1cfc132-25cd-4fbb-8b60-b8799acfb4c5

MINI MCR-SL-FM-RC-NC - Monitoring block



2902961

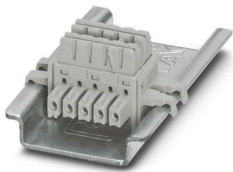
<https://www.phoenixcontact.com/us/products/2902961>

Accessories

ME 6,2 TBUS-2 1,5/5-ST-3,81 GY - DIN rail bus connectors

2695439

<https://www.phoenixcontact.com/us/products/2695439>

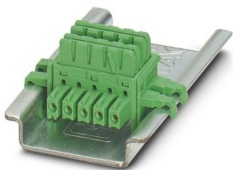


DIN rail connector (TBUS), 5-pos., for bridging the supply voltage, can be snapped onto NS 35/... DIN rail in accordance with EN 60715

ME 6,2 TBUS-2 1,5/5-ST-3,81 GN - DIN rail bus connectors

2869728

<https://www.phoenixcontact.com/us/products/2869728>



DIN rail connector for DIN rail mounting. Universal for TBUS housing. Gold-plated contacts, 5-pos.

MINI MCR-SL-FM-RC-NC - Monitoring block



2902961

<https://www.phoenixcontact.com/us/products/2902961>

TC-D37SUB-AIO16-M-PS-UNI - Module carrier

2902934

<https://www.phoenixcontact.com/us/products/2902934>



Universal termination carrier for connecting 16 MINI Analog signal conditioners to digital or analog I/O cards, via D-SUB connector, 37-pos. (1:1 connection), with HART multiplexer connection

TC-D37SUB-ADIO16-M-P-UNI - Module carrier

2902933

<https://www.phoenixcontact.com/us/products/2902933>



Universal termination carrier for connecting 16 MINI Analog signal conditioners to digital or analog I/O cards, via D-SUB connector, 37-pos. (1:1 connection)

MINI MCR-SL-FM-RC-NC - Monitoring block

2902961

<https://www.phoenixcontact.com/us/products/2902961>



MINI MCR DKL - Transparent cover

2308111

<https://www.phoenixcontact.com/us/products/2308111>



Fold up transparent cover for MINI MCR modules with additional labeling option using insert strips and flat Zack marker strip 6.2 mm

MINI MCR-DKL-LABEL - Marking label

2810272

<https://www.phoenixcontact.com/us/products/2810272>



Label for extended marking of MINI MCR modules in connection with the MINI MCR-DKL

MINI MCR-SL-FM-RC-NC - Monitoring block

2902961

<https://www.phoenixcontact.com/us/products/2902961>



MINI MCR-SL-PTB-FM - Power terminal block

2902958

<https://www.phoenixcontact.com/us/products/2902958>



The MINI MCR-SL-PTB-FM(-SP) power terminal block is used to supply the supply voltage to the DIN rail connector. The FM power terminal block offers the additional function of monitoring in combination with the fault monitoring module. Screw connection.

QUINT4-SYS-PS/1AC/24DC/2.5/SC - Power supply unit

2904614

<https://www.phoenixcontact.com/us/products/2904614>



Primary-switched power supply, QUINT POWER, screw connection, DIN rail mounting, supply of devices possible via the TBUS DIN rail connector, protective coating, input: single-phase, output: 24 V DC/2.5 A

MINI MCR-SL-FM-RC-NC - Monitoring block



2902961

<https://www.phoenixcontact.com/us/products/2902961>

SZS 0,6X3,5 - Screwdriver

1205053

<https://www.phoenixcontact.com/us/products/1205053>



Actuation tool, for ST terminal blocks, insulated, also suitable for use as a bladed screwdriver, size: 0.6 x 3.5 x 100 mm, 2-component grip, with non-slip grip

Phoenix Contact 2024 © - all rights reserved

<https://www.phoenixcontact.com>

Phoenix Contact USA
586 Fulling Mill Road
Middletown, PA 17057, United States
(+717) 944-1300
info@phoenixcon.com