

# RIF-2-RSC-LDP-24DC/2X21 - Relay Module



2903326

<https://www.phoenixcontact.com/pc/products/2903326>

Please be informed that the data shown in this PDF document is generated from our online catalog. Please find the complete data in the user documentation. Our general terms of use for downloads are valid.



Preassembled relay module with screw connection, consisting of: relay base, power contact relay, and retaining bracket. Contact switching type: 2 changeover contacts. Input voltage: 24 V DC

## Product description

The pluggable electromechanical and solid-state relays in the RIFLINE complete product range and the base are recognized and approved in accordance with UL 508. The relevant approvals can be called up at the individual components in question.

## Commercial data

|                                      |                     |
|--------------------------------------|---------------------|
| Item number                          | 2903326             |
| Packing unit                         | 10 pc               |
| Minimum order quantity               | 1 pc                |
| Product key                          | CK651A              |
| Catalog page                         | Page 342 (C-5-2019) |
| GTIN                                 | 4046356732222       |
| Weight per piece (including packing) | 117.31 g            |
| Weight per piece (excluding packing) | 106.6 g             |
| Customs tariff number                | 85364190            |
| Country of origin                    | CN                  |

# RIF-2-RSC-LDP-24DC/2X21 - Relay Module



2903326

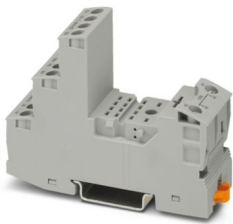
<https://www.phoenixcontact.com/pc/products/2903326>

## Set consists of

### RIF-2-BSC/4X21 - Relay base

2900932

<https://www.phoenixcontact.com/pc/products/2900932>



RIF-2... relay base, for industrial relay with 2 or 4 changeover contacts, screw connection, plug-in option for input/interference suppression modules, for mounting on NS 35/7,5

---

### REL-IR2/LDP- 24DC/2X21 - Single relay

2903660

<https://www.phoenixcontact.com/pc/products/2903660>



Plug-in industrial relay with power contacts, 2 changeover contacts, test button, status LED, freewheeling diode, mechanical switching position indicator, polarity: A1+, A2-, input voltage: 24 V DC

# RIF-2-RSC-LDP-24DC/2X21 - Relay Module



2903326

<https://www.phoenixcontact.com/pc/products/2903326>

## RIF-RH-2 - Retaining bracket

2900954

<https://www.phoenixcontact.com/pc/products/2900954>



Relay retaining bracket, with ejector function and holder for marking material, suitable for RIF-2 relay base, for industrial relay

# RIF-2-RSC-LDP-24DC/2X21 - Relay Module



2903326

<https://www.phoenixcontact.com/pc/products/2903326>

## Technical data

### Product properties

|                         |                                |
|-------------------------|--------------------------------|
| Product type            | Relay Module                   |
| Product family          | RIFLINE complete               |
| Application             | Universal                      |
| Operating mode          | 100% operating factor          |
| Mechanical service life | approx. $2 \times 10^7$ cycles |

### Insulation characteristics

|            |                  |
|------------|------------------|
| Insulation | Basic insulation |
|------------|------------------|

### Insulation characteristics

|                      |                                |
|----------------------|--------------------------------|
| Insulation           | Basic insulation               |
| Overvoltage category | III                            |
| Pollution degree     | 2 (Rated voltage of 230/400 V) |

### Electrical properties

|  |  |
|--|--|
| Maximum power dissipation for nominal condition      | 1.01 W   |
| Test voltage (Winding/contact)                       | 2.5 kV <sub>rms</sub> (50 Hz, 1 min., winding/contact)                       |
| Test voltage (Changeover contact/changeover contact) | 2.5 kV <sub>rms</sub> (50 Hz, 1 min., changeover contact/changeover contact) |
| Rated insulation voltage                             | 250 V AC   |
| Rated surge voltage                                  | 4 kV   |

### Input data

#### Coil side

|   |                               |
|---|-------------------------------|
| Nominal input voltage $U_N$               | 24 V DC                       |
| Input voltage range                       | 19.2 V DC ... 30 V DC (20 °C) |
| Input voltage range in reference to $U_N$ | see diagram                   |
| Drive and function                        | monostable                    |
| Drive (polarity)                          | polarized                     |
| Typical input current at $U_N$            | 42 mA                         |
| Typical response time                     | 13 ms                         |
| Typical release time                      | 14 ms                         |
| Coil voltage                              | 24 V DC                       |
| Protective circuit                        | Freewheeling diode            |
| Operating voltage display                 | Yellow LED                    |

### Output data

#### Switching

|                        |                       |
|------------------------|-----------------------|
| Contact switching type | 2 changeover contacts |
| Type of switch contact | Single contact        |
| Contact material       | AgNi                  |

# RIF-2-RSC-LDP-24DC/2X21 - Relay Module



2903326

<https://www.phoenixcontact.com/pc/products/2903326>

|  |                                 |
|--|---------------------------------|
| Maximum switching voltage                      | 250 V AC/DC                     |
| Minimum switching voltage                      | 5 V (24 mA)                     |
| Limiting continuous current                    | 9 A (see diagram)               |
| Maximum inrush current                         | 30 A (20 ms, N/O contacts)      |
| Min. switching current                         | 5 mA (24 V)                     |
| Interrupting rating (ohmic load) max.          | 240 W (24 V DC)                 |
|  | 124 W (48 V DC)                 |
|  | 108 W (60 V DC)                 |
|  | 52 W (110 V DC)                 |
|  | 48 W (220 V DC)                 |
|  | 2500 VA (250 V AC)              |
| Utilization category CB Scheme (IEC 60947-5-1) | AC15, 1.5 A/240 V (N/O contact) |
|  | DC13, 2 A/24 V (N/O contact)    |

## Connection data

|   |  |
|---|--|
| Connection method   | Screw connection   |
| Stripping length  | 8 mm   |
| Conductor cross section rigid   | 0.5 mm <sup>2</sup> ... 4 mm <sup>2</sup>                                      |
| Conductor cross-section rigid (2 conductors with same cross section)    | 0.5 mm <sup>2</sup> ... 2.5 mm <sup>2</sup>                                    |
| Conductor cross section flexible  | 0.5 mm <sup>2</sup> ... 4 mm <sup>2</sup>                                      |
|   | 0.5 mm <sup>2</sup> ... 4 mm <sup>2</sup> (Ferrule with plastic sleeve)        |
| Conductor cross section flexible (2 conductors with same cross section) | 0.5 mm <sup>2</sup> ... 2.5 mm <sup>2</sup>                                    |
|   | 0.5 mm <sup>2</sup> ... 1.5 mm <sup>2</sup> (TWIN ferrule with plastic sleeve) |
| Conductor cross section AWG   | 20 ... 10 (solid)  |
|   | 20 ... 12 (flexible)   |
| Tightening torque   | 0.5 Nm ... 0.6 Nm  |

## Dimensions

|        |       |
|--------|-------|
| Width  | 27 mm |
| Height | 89 mm |
| Depth  | 75 mm |

## Material specifications

|  |                 |
|--|-----------------|
| Color                                  | gray (RAL 7042) |
| Flammability rating according to UL 94 | V2 (Housing)    |

## Environmental and real-life conditions

### Ambient conditions

|   |                   |
|---|-------------------|
| Degree of protection (Relay base)       | IP20 (Relay base) |
| Degree of protection (Relay)            | RT I (Relay)      |
| Ambient temperature (operation)         | -40 °C ... 60 °C  |
| Ambient temperature (storage/transport) | -40 °C ... 85 °C  |

# RIF-2-RSC-LDP-24DC/2X21 - Relay Module



2903326

<https://www.phoenixcontact.com/pc/products/2903326>

## Approvals

### Corrosive gas test

|                |                            |
|----------------|----------------------------|
| Identification | ISA-S71.04. G3 Harsh Group |
|                | EN 60068-2-60              |

## Standards and regulations

|                       |               |
|-----------------------|---------------|
| Standards/regulations | IEC 60947-5-1 |
|-----------------------|---------------|

## Mounting

|                       |                           |
|-----------------------|---------------------------|
| Mounting type         | DIN rail mounting         |
| Assembly instructions | in rows with zero spacing |
| Mounting position     | any                       |

Phoenix Contact 2024 © - all rights reserved

<https://www.phoenixcontact.com>

PHOENIX CONTACT GmbH & Co. KG

Flachmarktstraße 8

D-32825 Blomberg

+49 (0) 5235-3 00

[info@phoenixcontact.com](mailto:info@phoenixcontact.com)