

2905585

<https://www.phoenixcontact.com/us/products/2905585>

Please be informed that the data shown in this PDF document is generated from our online catalog. Please find the complete data in the user documentation. Our general terms of use for downloads are valid.



Plug-in power protective circuit solid-state relay, with signal logic, can be plugged into 4-pos. basic terminal blocks, input: 24 V DC, output: short-circuit-proof, 18 - 36 V DC/4 A

Your advantages

- Feedback in the event of an error
- Safe detection and signaling of a wire break on the load side
- Time-dependent overload shutdown for reliable protection against continuous overloads
- Fast short circuit shutdown with simultaneous current limitation
- After an overload or short-circuit has been triggered, a defined reset of the control voltage must be carried out
- Brief inrush peaks are ignored

Commercial data

Item number	2905585
Packing unit	1 pc
Minimum order quantity	1 pc
Note	Made to order (non-returnable)
Sales key	C460
Product key	CK61B2
Catalog page	Page 449 (C-5-2017)
GTIN	4017918107611
Weight per piece (including packing)	35.72 g
Weight per piece (excluding packing)	35.72 g
Customs tariff number	85364190
Country of origin	DE

ST-OV4- 24DC/ 24DC/4-PRO - Solid-state relay



2905585

<https://www.phoenixcontact.com/us/products/2905585>

Technical data

Product properties

Product type	Single solid-state relay
Insulation characteristics	
Insulation	Basic insulation
Insulation characteristics	
Insulation	Basic insulation

Electrical properties

Test voltage (Input/output)	2.5 kV AC (Input/output)
Test voltage (Output / output)	2.5 kV AC (Output / output)

Input data

Nominal input voltage U_N	24 V DC
Input voltage range in reference to U_N	0.5 ... 1.5
Input voltage range	12 V DC ... 36 V DC
Switching threshold "0" signal, voltage	5 V DC
Switching threshold "1" signal voltage	8.5 V DC
Typical input current at U_N	6.5 mA
Typical response time	300 μ s
Typical turn-off time	700 μ s
Status display	Yellow LED
Operating voltage display	Yellow LED
Protective circuit	Reverse polarity protection; Polarity protection diode
Transmission frequency	100 Hz

Output data

Design of digital output	electronic
Output voltage range	18 V DC ... 36 V DC
Limiting continuous current	4 A (see derating curve)
Min. load current	1 mA
Current limitation at short-circuits	approx. 70 A
Voltage drop at max. limiting continuous current	200 mV
Output circuit	3-conductor, ground-referenced
Error indication	Red LED
Protective circuit	Reverse polarity protection Freewheeling diode; Freewheeling diode
Wire-break message for load current	< 100 μ A
Overload disconnection ($\sim 1.4 \times$ continuous current)	≤ 100 ms (See the time-current characteristic curve)
Short-circuit disconnection	< 200 μ s (See the time-current characteristic curve)
Output voltage range	5 V DC ... 36 V DC

ST-OV4- 24DC/ 24DC/4-PRO - Solid-state relay



2905585

<https://www.phoenixcontact.com/us/products/2905585>

Limiting continuous current	50 mA
Voltage drop at max. limiting continuous current	≤ 1.5 V
Output circuit	2-conductor, floating
Protective circuit	Reverse polarity protection; Polarity protection diode

Dimensions

Width	27 mm
Height	63.5 mm
Depth	114 mm

Environmental and real-life conditions

Ambient conditions

Ambient temperature (operation)	0 °C ... 60 °C
Ambient temperature (storage/transport)	0 °C ... 70 °C

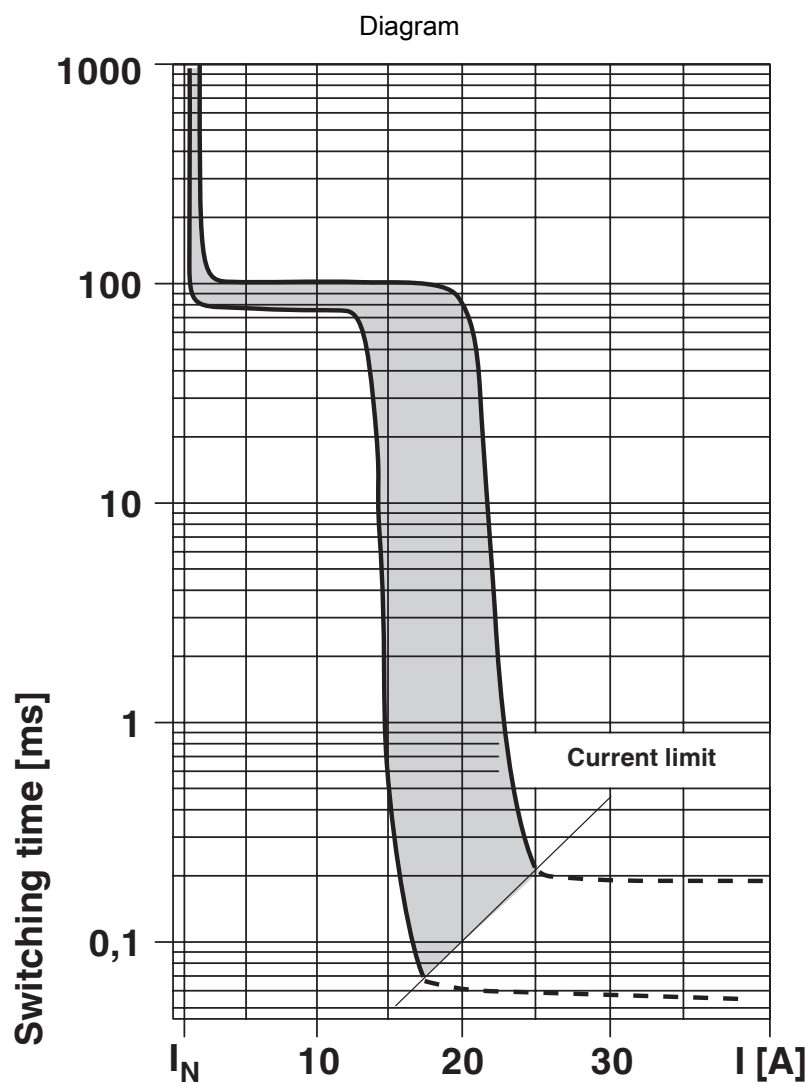
Standards and regulations

Standards/regulations	IEC 60664
	EN 50178

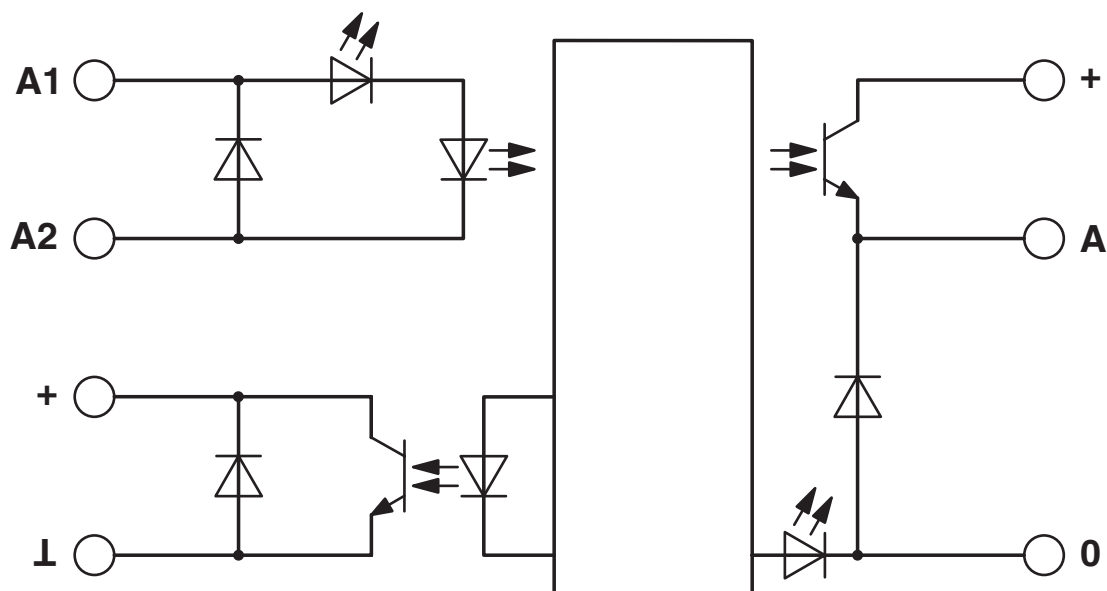
Mounting

Assembly instructions	in rows with zero spacing
Mounting position	any

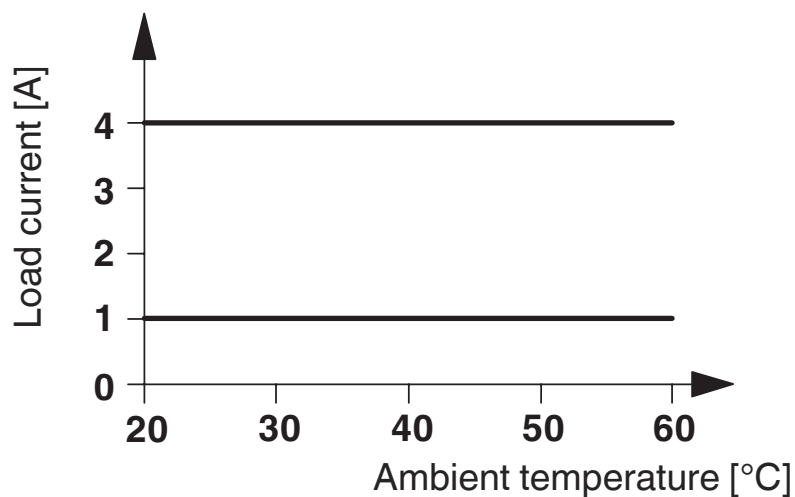
Drawings



Circuit diagram



Diagram



ST-OV4- 24DC/ 24DC/4-PRO - Solid-state relay

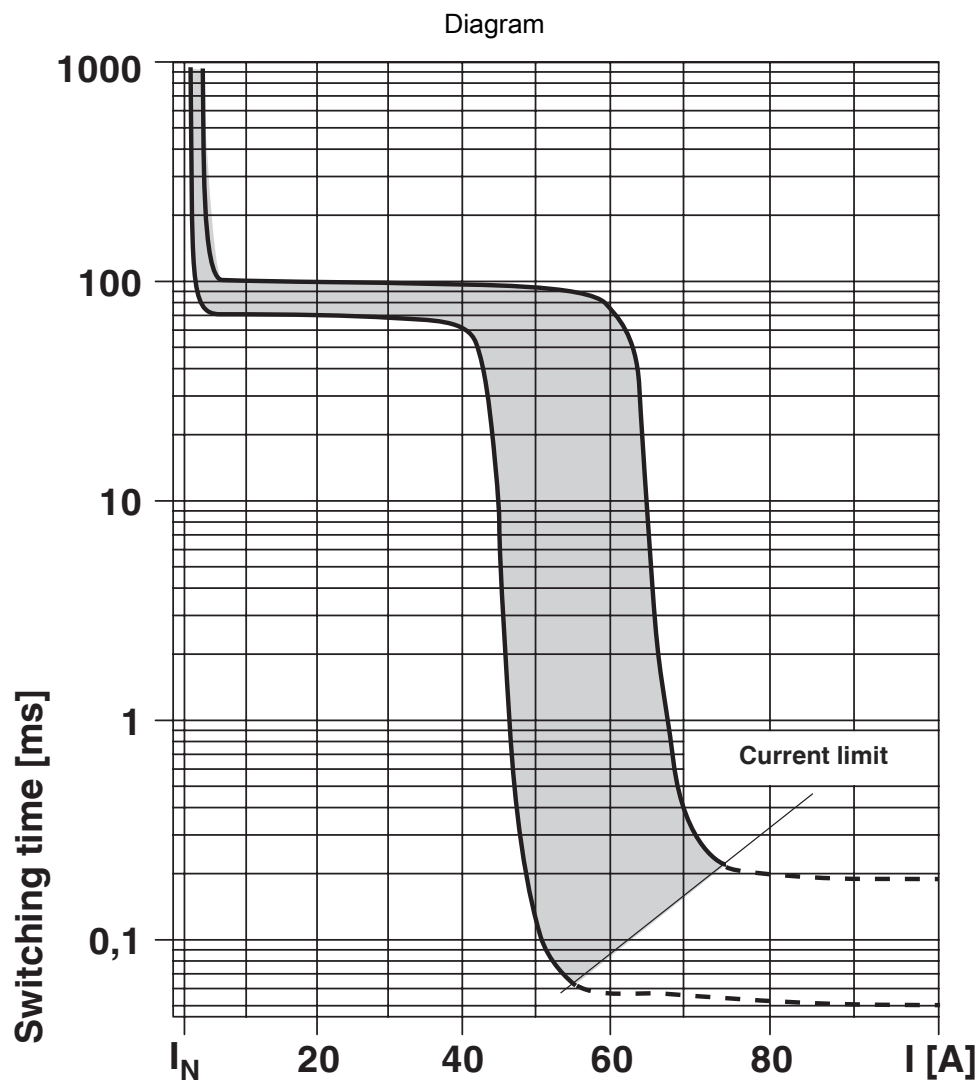
2905585

<https://www.phoenixcontact.com/us/products/2905585>



Diagram





ST-OV4- 24DC/ 24DC/4-PRO - Solid-state relay



2905585

<https://www.phoenixcontact.com/us/products/2905585>

Classifications

ECLASS

ECLASS-11.0	27371604
-------------	----------

ST-OV4- 24DC/ 24DC/4-PRO - Solid-state relay



2905585

<https://www.phoenixcontact.com/us/products/2905585>

Environmental product compliance

China RoHS	Environmentally Friendly Use Period = 50 years
	For information on hazardous substances, refer to the manufacturer's declaration available under "Downloads"

Phoenix Contact 2024 © - all rights reserved
<https://www.phoenixcontact.com>

Phoenix Contact USA
586 Fulling Mill Road
Middletown, PA 17057, United States
(+717) 944-1300
info@phoenixcon.com