

REL-PR1-230AC/1/MB - Single relay



2908047

<https://www.phoenixcontact.com/pc/products/2908047>

Please be informed that the data shown in this PDF document is generated from our online catalog. Please find the complete data in the user documentation. Our general terms of use for downloads are valid.



Plug-in high-power relay with power contacts, specifically for switching high DC loads, 1 N/O contact, blowout magnet, coil voltage: 230 V AC

Commercial data

Item number	2908047
Packing unit	1 pc
Minimum order quantity	1 pc
Product key	CK6193
Catalog page	Page 314 (C-5-2019)
GTIN	4055626266916
Weight per piece (including packing)	80.5 g
Weight per piece (excluding packing)	80.5 g
Customs tariff number	85364900
Country of origin	PL

REL-PR1-230AC/1/MB - Single relay



2908047

<https://www.phoenixcontact.com/pc/products/2908047>

Technical data

Product properties

Product type	Single relay
Operating mode	100% operating factor
Mechanical service life	approx. 2×10^7 cycles

Insulation characteristics

Overvoltage category	III
Pollution degree	3

Electrical properties

Service life electrical	see diagram
Maximum power dissipation for nominal condition	2.76 W
Test voltage (Winding/contact)	2.5 kV (50 Hz, 1 min., winding/contact)
Rated surge voltage	4 kV

Input data

Coil side

Nominal input voltage U_N	230 V AC
Input voltage range	195.5 V AC ... 253 V AC
Input voltage range in reference to U_N	see diagram
Mains frequency	50/60 Hz
Drive and function	monostable
Drive (polarity)	non-polarized
Typical input current at U_N	12 mA
Typical response time	5 ms ... 25 ms (depending on phase relation)
Typical release time range	5 ms ... 18 ms (depending on phase relation)

Output data

Switching

Contact switching type	1 N/O contact
Type of switch contact	Single contact
Contact material	AgNi
Maximum switching voltage	440 V AC 250 V DC
Minimum switching voltage	5 V (At 24 mA)
Limiting continuous current	16 A
Maximum inrush current	50 A (20 ms) 30 A (4 s)
Min. switching current	5 mA (at 24 V)
Interrupting rating (ohmic load) max.	384 W (at 24 V DC) 744 W (at 48 V DC)

REL-PR1-230AC/1/MB - Single relay



2908047

<https://www.phoenixcontact.com/pc/products/2908047>

	900 W (at 60 V DC)
	1540 W (at 110 V DC)
	2640 W (at 220 V DC)
	4000 VA (for 250 V AC)
Switching capacity min.	120 mW
Switching capacity	1 A (220 V, DC13)
	1.5 A (240 V, AC15)
	16 A (24 V DC, L/R = 40 ms)
	12 A (48 V DC, L/R = 40 ms)
	9.5 A (60 V DC, L/R = 40 ms)
	5.4 A (110 V DC, L/R = 40 ms)
	3 A (220 V DC, L/R = 40 ms)
	2.7 A (250 V DC, L/R = 40 ms)

Connection data

Connection method	Plug-in connection
-------------------	--------------------

Dimensions

Width	38.6 mm
Height	36.1 mm
Depth	45.5 mm

Environmental and real-life conditions

Ambient conditions

Degree of protection	RT I
Ambient temperature (operation)	-40 °C ... 70 °C
Ambient temperature (storage/transport)	-40 °C ... 85 °C

Approvals

Corrosive gas test

Identification	ISA-S71.04. G3 Harsh Group
	EN 60068-2-60

Standards and regulations

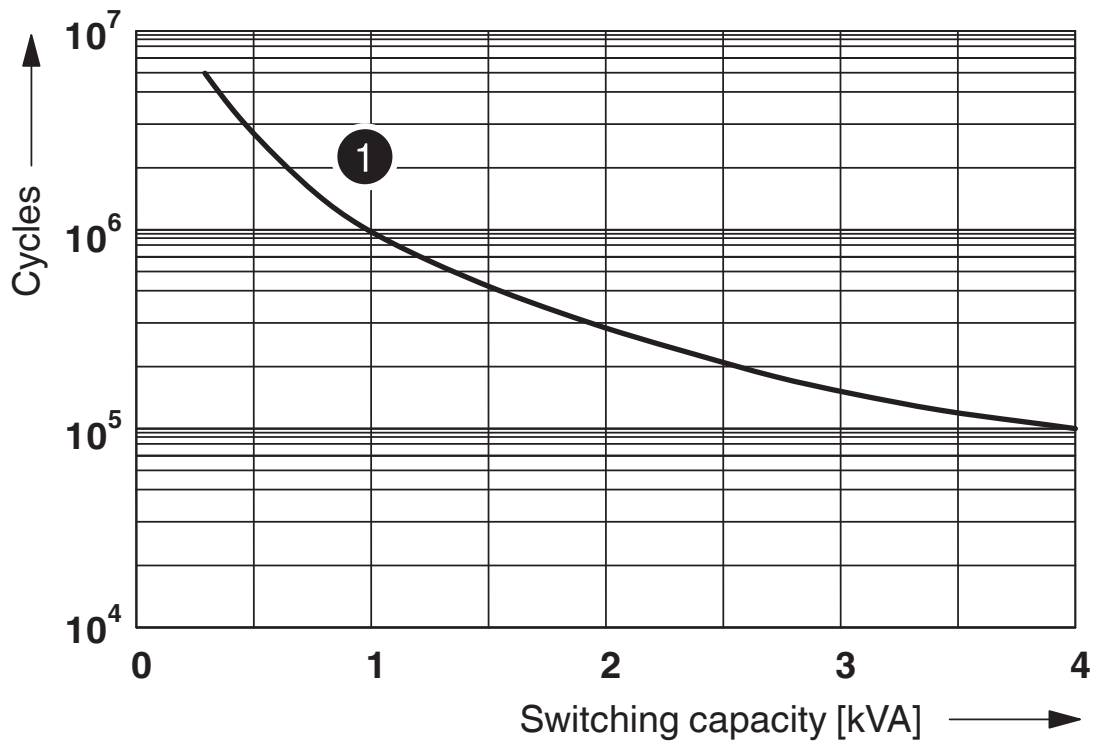
Standards/regulations	IEC 60664
	IEC 61810

Mounting

Mounting position	any
-------------------	-----

Drawings

Diagram



① 250 V AC, Ohmic load

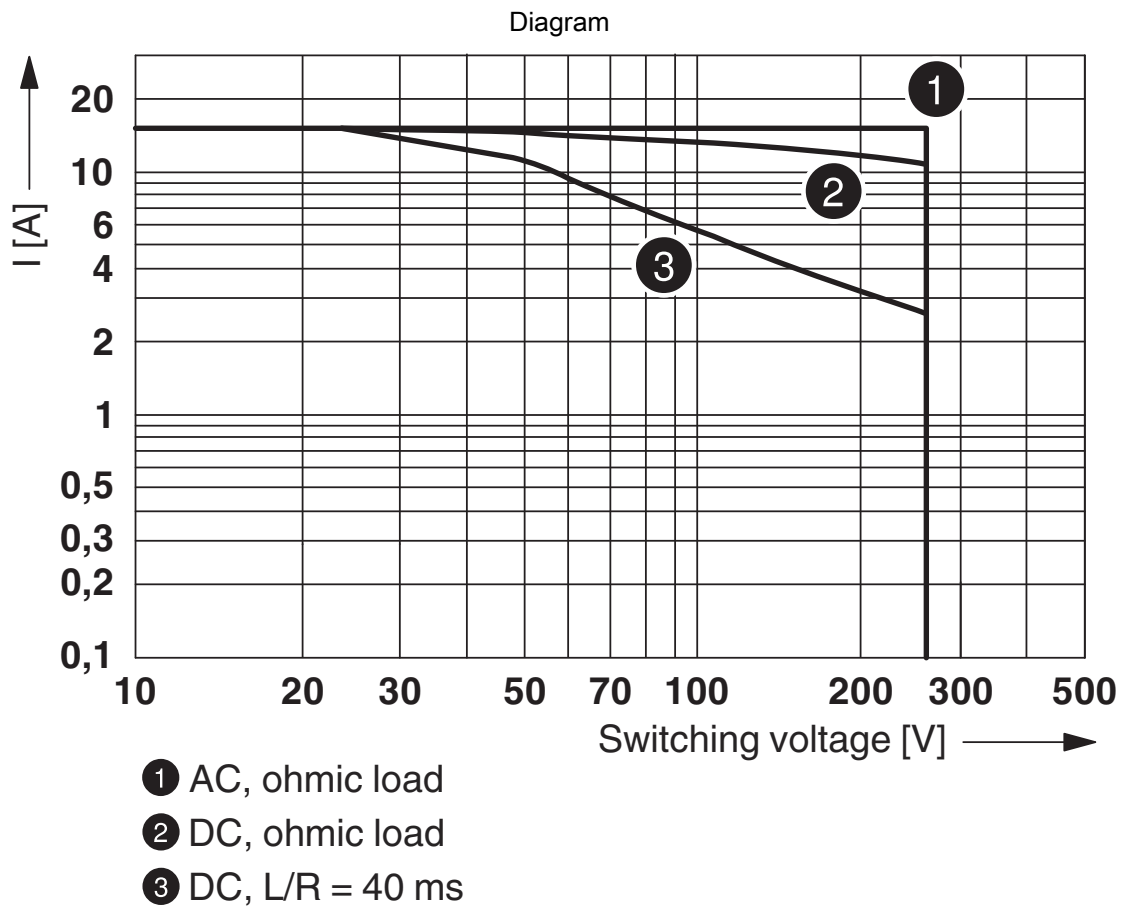
Electrical service life

REL-PR1-230AC/1/MB - Single relay



2908047

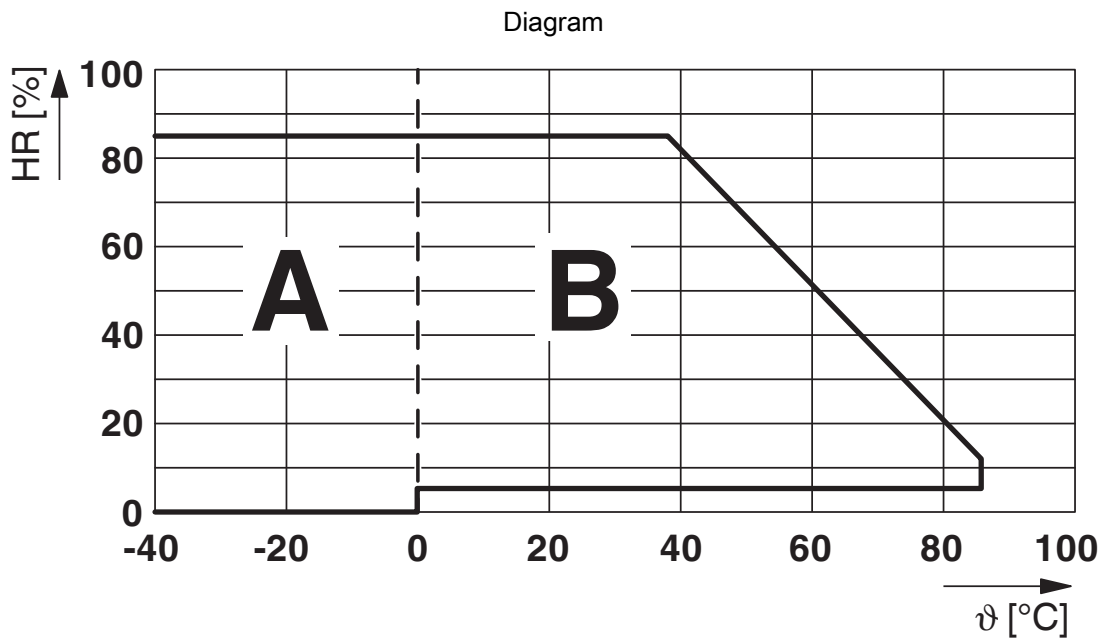
<https://www.phoenixcontact.com/pc/products/2908047>



Interrupting rating

2908047

<https://www.phoenixcontact.com/pc/products/2908047>



Permissible humidity for operation and storage.

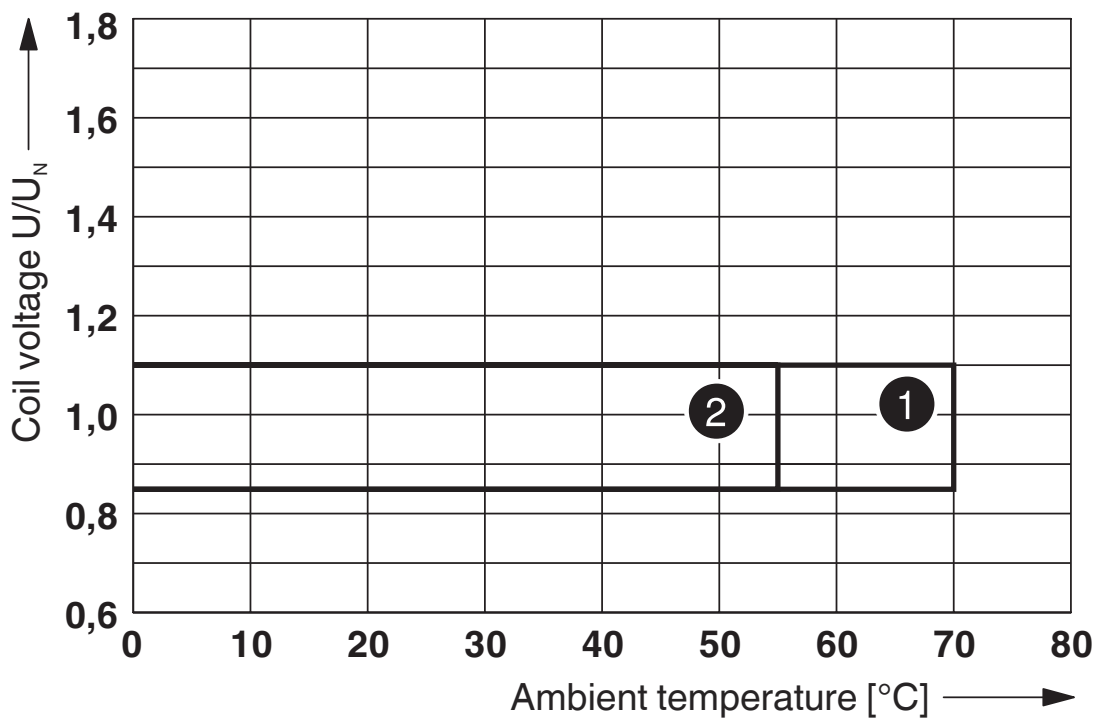
The maximum permissible ambient temperature as specified in the data sheet must be observed.

Area A: Ice buildup at ambient temperatures $\leq 0^\circ\text{C}$ must be prevented

Area B: Condensation at ambient temperatures $> 0^\circ\text{C}$ must be prevented

On 30 full days that are naturally distributed across an entire year, a humidity level of 95% is permissible at an ambient temperature $\leq 25^\circ\text{C}$.

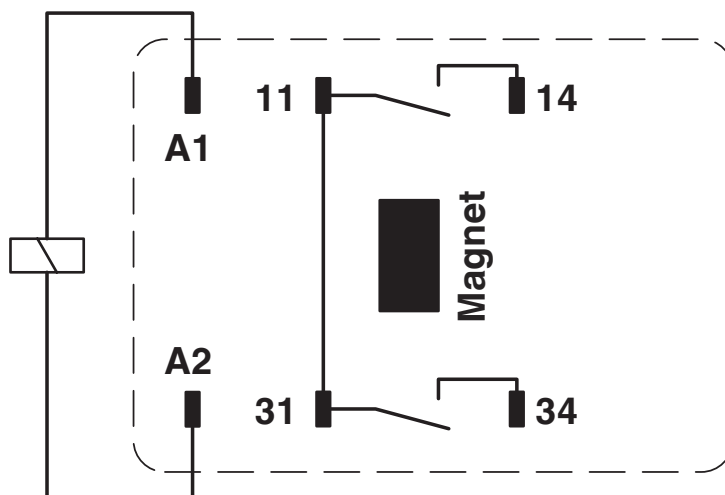
Diagram



- ① DC coils
- ② AC coils

Operating voltage range

Circuit diagram



REL-PR1-230AC/1/MB - Single relay



2908047

<https://www.phoenixcontact.com/pc/products/2908047>

Approvals

To download certificates, visit the product detail page: <https://www.phoenixcontact.com/pc/products/2908047>



CSA

Approval ID: 256725



cUL Recognized

Approval ID: FILE E 172140



UL Recognized

Approval ID: FILE E 172140



EAC

Approval ID: TR_TS_D_00573_c



EAC

Approval ID: RU*C-DE.*08.B.00010

cULus Recognized

REL-PR1-230AC/1/MB - Single relay



2908047

<https://www.phoenixcontact.com/pc/products/2908047>

Classifications

ECLASS

ECLASS-11.0	27371601
ECLASS-12.0	27371601
ECLASS-13.0	27371601

ETIM

ETIM 9.0	EC001437
----------	----------

UNSPSC

UNSPSC 21.0	39122300
-------------	----------

REL-PR1-230AC/1/MB - Single relay



2908047

<https://www.phoenixcontact.com/pc/products/2908047>

Environmental product compliance

EU RoHS

Fulfills EU RoHS substance requirements	Yes, No exemptions
---	--------------------

China RoHS

Environment friendly use period (EFUP)	EFUP-E
	No hazardous substances above the limits

EU REACH SVHC

REACH candidate substance (CAS No.)	No substance above 0.1 wt%
-------------------------------------	----------------------------

REL-PR1-230AC/1/MB - Single relay



2908047

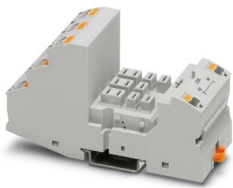
<https://www.phoenixcontact.com/pc/products/2908047>

Mandatory accessories

RIF-4-BPT/3X21 - Relay base

2900961

<https://www.phoenixcontact.com/pc/products/2900961>

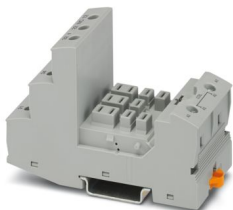


Relay base RIF-4..., for high-power relay with 2 or 3 changeover contacts or 3 N/O contacts, Push-in connection, plug-in option for input/interference suppression modules, for mounting on NS 35/7,5

RIF-4-BSC/3X21 - Relay base

2900960

<https://www.phoenixcontact.com/pc/products/2900960>



RIF-4... relay base, for high-power relay with 2 or 3 changeover contacts or 3 N/O contacts, screw connection, plug-in option for input/interference suppression modules, for mounting on NS 35/7,5

Phoenix Contact 2024 © - all rights reserved

<https://www.phoenixcontact.com>

PHOENIX CONTACT GmbH & Co. KG

Flachsmarktstraße 8

D-32825 Blomberg

+49 (0) 5235-3 00

info@phoenixcontact.com