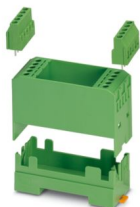


EMG 30-LG/SET - Electronics housing



2940016
<https://www.phoenixcontact.com/us/products/2940016>

Please be informed that the data shown in this PDF document is generated from our online catalog. Please find the complete data in the user documentation. Our general terms of use for downloads are valid.



Electronic housing set, consisting of electronic housing and printed circuit termination blocks, pitch 5

Commercial data

Item number	2940016
Packing unit	1 pc
Note	Made to order (non-returnable)
Sales key	AC11
Product key	ACHCBA
Catalog page	Page 711 (C-1-2013)
GTIN	4017918079796
Weight per piece (including packing)	50.42 g
Weight per piece (excluding packing)	50.42 g
Customs tariff number	85369010
Country of origin	DE

EMG 30-LG/SET - Electronics housing



2940016

<https://www.phoenixcontact.com/us/products/2940016>

Set consists of

MKDS 3/ 2 - PCB terminal block

1711026

<https://www.phoenixcontact.com/us/products/1711026>



PCB terminal block, nominal current: 24 A, rated voltage (III/2): 400 V, nominal cross section: 2.5 mm², number of potentials: 2, number of rows: 1, number of positions per row: 2, product range: MKDS 3, pitch: 5 mm, connection method: Screw connection with tension sleeve, screw head form: L Slotted, mounting: Wave soldering, conductor/PCB connection direction: 0 °, color: green, Pin layout: Linear pinning, Solder pin [P]: 5 mm, number of solder pins per potential: 1, type of packaging: packed in cardboard. The article can be aligned to create different nos. of positions!

EMG 30-LG - Electronics housing

2947860

<https://www.phoenixcontact.com/us/products/2947860>



Electronic housing, with snap foot for DIN rail EN 50022 for PCB insertion, without screw connection terminal blocks and cover

EMG 30-LG/SET - Electronics housing



2940016

<https://www.phoenixcontact.com/us/products/2940016>

MKDS 3/ 3 - PCB terminal block

1711039

<https://www.phoenixcontact.com/us/products/1711039>



PCB terminal block, nominal current: 24 A, rated voltage (III/2): 400 V, nominal cross section: 2.5 mm², number of potentials: 3, number of rows: 1, number of positions per row: 3, product range: MKDS 3, pitch: 5 mm, connection method: Screw connection with tension sleeve, screw head form: L Slotted, mounting: Wave soldering, conductor/PCB connection direction: 0 °, color: green, Pin layout: Linear pinning, Solder pin [P]: 5 mm, number of solder pins per potential: 1, type of packaging: packed in cardboard. The article can be aligned to create different nos. of positions!

MKDS 3/ 4 - PCB terminal block

1711042

<https://www.phoenixcontact.com/us/products/1711042>



PCB terminal block, nominal current: 24 A, rated voltage (III/2): 400 V, nominal cross section: 2.5 mm², number of potentials: 4, number of rows: 1, number of positions per row: 4, product range: MKDS 3, pitch: 5 mm, connection method: Screw connection with tension sleeve, screw head form: L Slotted, mounting: Wave soldering, conductor/PCB connection direction: 0 °, color: green, Pin layout: Linear pinning, Solder pin [P]: 5 mm, number of solder pins per potential: 1, type of packaging: packed in cardboard. The article can be aligned to create different nos. of positions!

EMG 30-LG/SET - Electronics housing



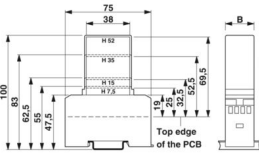
2940016
<https://www.phoenixcontact.com/us/products/2940016>

Technical data

Product properties

Type	Lower housing part, removable cover as option, connection system integrated
Product type	Stackable housing set
Product family	EMG...-LG/SET
Number of positions	10
Pitch	5 mm
Type	Lower and upper part, with snap-on foot, including PCB terminal blocks
Housing type	Component housing

Dimensions

Dimensional drawing	
Width	30 mm
Installed height	47.5 mm
Height NS 35/7,5	55 mm
	100 mm
Depth	75 mm
Length	75 mm
Pitch	5 mm

Material specifications

Color	green
Flammability rating according to UL 94	V0
Housing material	Polycarbonate fiber reinforced

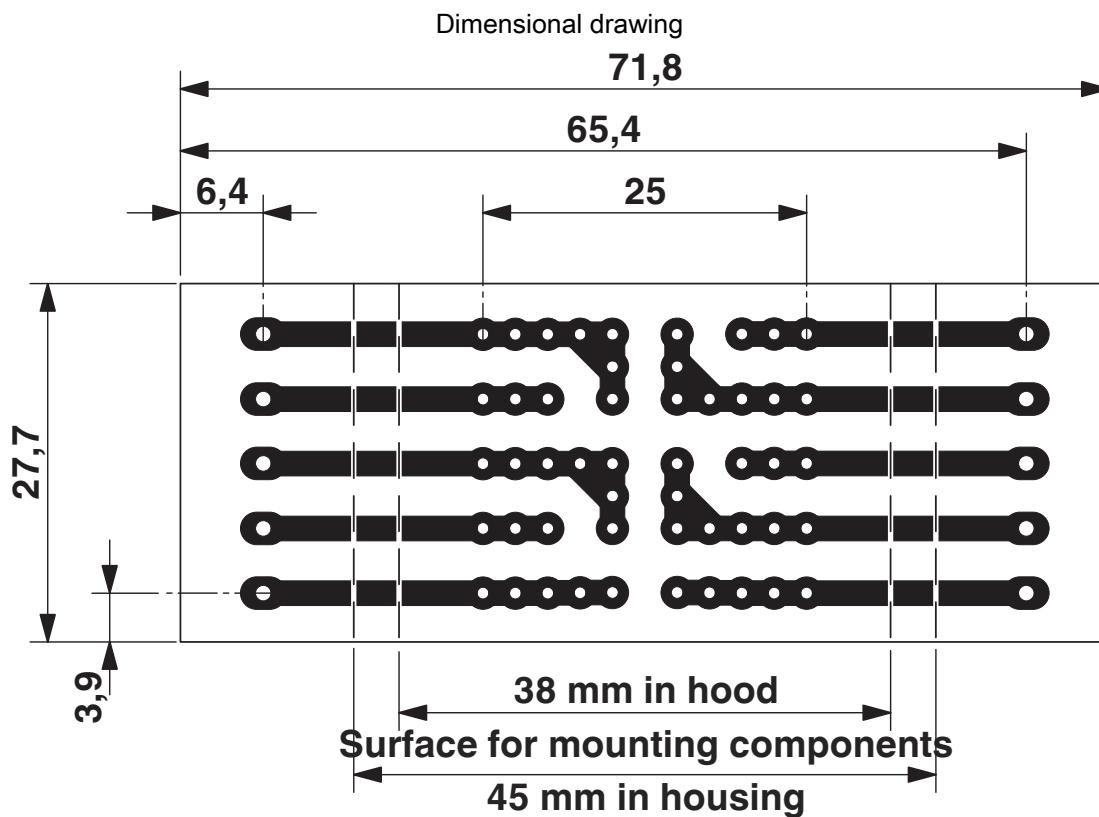
Environmental and real-life conditions

Ambient conditions	
Ambient temperature (operation)	-40 °C ... 125 °C

Mounting

Mounting type	DIN rail mounting
---------------	-------------------

Drawings



Pitch 5 mm

a = Area for mounting components, 38 mm in the hood

b = Area for mounting components, 45 mm in the housing

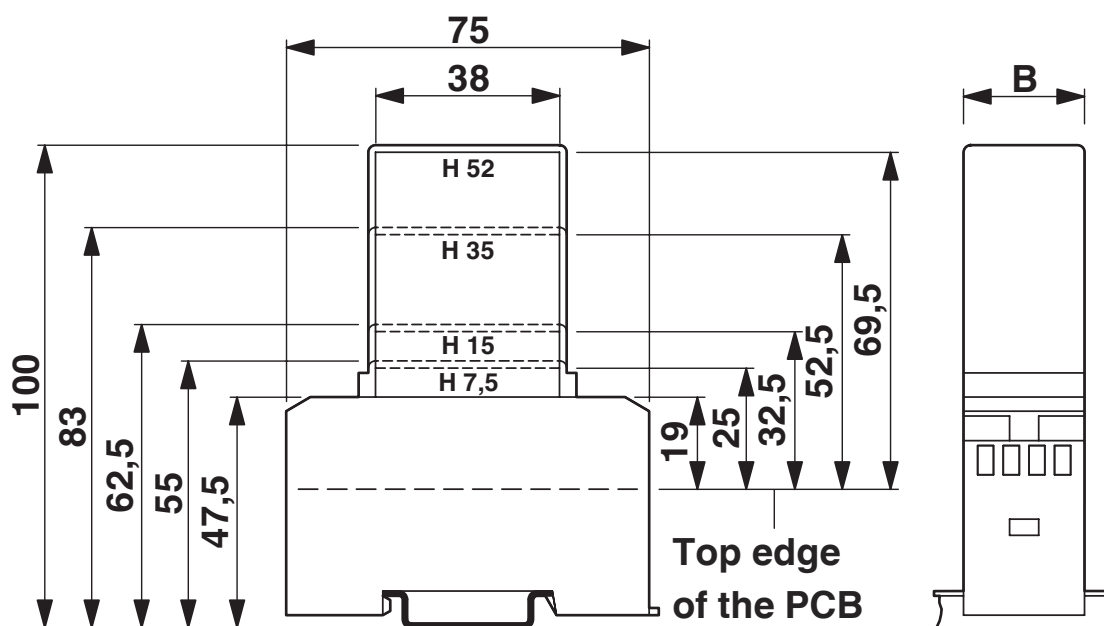
EMG 30-LG/SET - Electronics housing

2940016

<https://www.phoenixcontact.com/us/products/2940016>



Dimensional drawing



1 = Top edge of the PCB

B = Housing width

EMG 30-LG/SET - Electronics housing

2940016

<https://www.phoenixcontact.com/us/products/2940016>



Approvals

🔗 To download certificates, visit the product detail page: <https://www.phoenixcontact.com/us/products/2940016>



EAC

Approval ID: B.01687

EMG 30-LG/SET - Electronics housing



2940016

<https://www.phoenixcontact.com/us/products/2940016>

Classifications

ECLASS

ECLASS-11.0	27182702
-------------	----------

ETIM

ETIM 8.0	EC001031
----------	----------

UNSPSC

UNSPSC 21.0	31261500
-------------	----------

EMG 30-LG/SET - Electronics housing



2940016
<https://www.phoenixcontact.com/us/products/2940016>

Environmental product compliance

China RoHS	Environmentally Friendly Use Period = 50 years
	For information on hazardous substances, refer to the manufacturer's declaration available under "Downloads"

Phoenix Contact 2024 © - all rights reserved
<https://www.phoenixcontact.com>

Phoenix Contact USA
586 Fulling Mill Road
Middletown, PA 17057, United States
(+717) 944-1300
info@phoenixcon.com