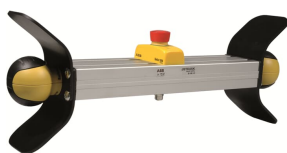


## PRODUCT-DETAILS

# JSTD25K

## JSTD25K Two-Hand device



### General Information

Extended Product Type	JSTD25K
Product ID	2TLA020007R6900
EAN	7350024479690
Catalog Description	JSTD25K Two-Hand device
Long Description	Two-hand device with two JSTD1-B Safeballs and one emergency stop button Smile 10 EK. Each Safeball is mounted on a side of a 44x88 extruded aluminum profile designed for two-hand applications. The Smile 10 EK emergency stop button is mounted on top. Safeballs and Smile are pre-wired to a M12-8 male connector. The safeballs have protective flanges.

### Additional Information

Product Name	Two-Hand device
Special Functions	Emergency Stop Button

### Technical

Connection Configuration	M12-8 male
--------------------------	------------

### Popular Downloads

Data Sheet, Technical Information	2TLC010001C0202
-----------------------------------	-----------------

Instructions and  
Manuals

2TLC172185M0201

---

## Certificates and Declarations (Document Number)

---

Declaration of Conformity - CE	2TLC172023D0201
-----------------------------------	-----------------

Instructions and Manuals	2TLC172185M0201
-----------------------------	-----------------

---

---

## Dimensions

---

Product Net Width	364 mm
Product Net Depth / Length	90.5 mm
Product Net Height	189 mm
Product Net Weight	1.52 kg

---

---

## Ordering

---

Minimum Order Quantity	1 piece
Country of Origin	Sweden (SE)
Customs Tariff Number	85365011

---

---

## Classifications

---

Object Classification Code	B
ETIM 7	EC001260 - Two-hand control device
ETIM 8	EC001260 - Two-hand control device
eClass	V11.0 : 27371219
UNSPSC	39122221

---

---

## Categories

---

Low Voltage Products and Systems → Control Products → Safety Products → Safety Control Devices → JSTD25

