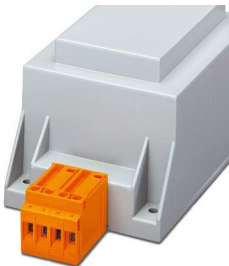


3004508
<https://www.phoenixcontact.com/us/products/3004508>

Please be informed that the data shown in this PDF document is generated from our online catalog. Please find the complete data in the user documentation. Our general terms of use for downloads are valid.



Molded transformer terminal block, connection method: Screw connection, length: 23.4 mm, width: 12.4 mm, height: 29.7 mm, color: orange

Commercial data

Item number	3004508
Packing unit	1 pc
Note	Made to order (non-returnable)
Sales key	AA20
Product key	AARAEA
Catalog page	Page 315 (CL-2002)
GTIN	4017918090814
Weight per piece (including packing)	10.23 g
Weight per piece (excluding packing)	10.23 g
Customs tariff number	85369010
Country of origin	PL

VTRK 4-SI/C OG - Molded transformer terminal block



3004508

<https://www.phoenixcontact.com/us/products/3004508>

Technical data

Product properties

Product type	Distributor terminal block
Number of positions	2
Number of connections	4
Number of rows	1

Insulation characteristics

Overvoltage category	III
Degree of pollution	3

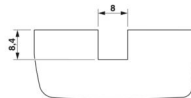
Electrical properties

Rated insulation voltage	32 V
Rated surge voltage	0.8 kV

Connection data

Screw thread	M3
Tightening torque	0.6 ... 0.8 Nm
Stripping length	8 mm
	8 mm
Internal cylindrical gage	A4
Conductor cross section rigid	0.2 mm ² ... 6 mm ²
Cross section AWG	24 ... 10 (converted acc. to IEC)
Conductor cross section flexible	0.2 mm ² ... 4 mm ²
Conductor cross-section flexible (ferrule without plastic sleeve)	0.25 mm ² ... 4 mm ²
Flexible conductor cross section (ferrule with plastic sleeve)	0.25 mm ² ... 2.5 mm ²
2 conductors with same cross section, solid	0.2 mm ² ... 1.5 mm ²
2 conductors with same cross section, flexible	0.2 mm ² ... 1.5 mm ²
2 conductors with same cross section, flexible, with ferrule without plastic sleeve	0.25 mm ² ... 1.5 mm ²
2 conductors with the same cross section, flexible, with TWIN ferrule with plastic sleeve	0.5 mm ² ... 2.5 mm ²
Nominal current	10 A (is determined by the fuse used)
Nominal voltage	voltage data only possible in conjunction with transformer

Dimensions

Dimensional drawing	
Width	12.4 mm
Height	29.7 mm
Length	23.4 mm

VTRK 4-SI/C OG - Molded transformer terminal block



3004508

<https://www.phoenixcontact.com/us/products/3004508>

Material specifications

Color	orange
Flammability rating according to UL 94	V0
Insulating material group	I
Insulating material	PA

VTRK 4-SI/C OG - Molded transformer terminal block

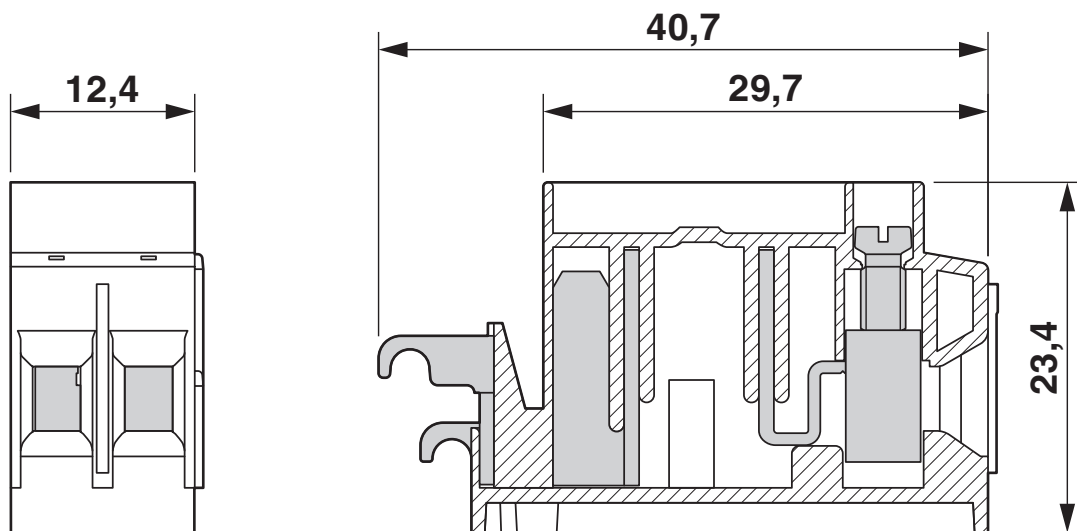


3004508

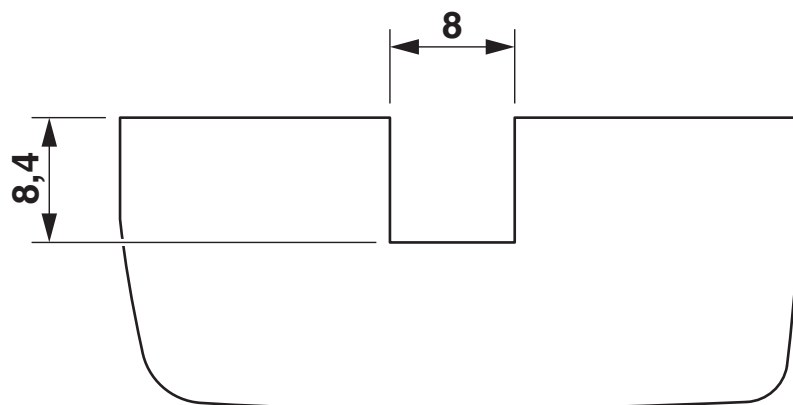
<https://www.phoenixcontact.com/us/products/3004508>

Drawings

Dimensional drawing



Dimensional drawing



VTRK 4-SI/C OG - Molded transformer terminal block



3004508

<https://www.phoenixcontact.com/us/products/3004508>

Classifications

ECLASS

ECLASS-13.0	27141110
-------------	----------

VTRK 4-SI/C OG - Molded transformer terminal block



3004508

<https://www.phoenixcontact.com/us/products/3004508>

Accessories

SI FORM C 4 A DIN 72581 - Fuse

0913731

<https://www.phoenixcontact.com/us/products/0913731>

Flat-type plug-in fuse, type C, color code: pink, nominal current: 4 A



SI FORM C 5 A DIN 72581 - Fuse

0913692

<https://www.phoenixcontact.com/us/products/0913692>

Flat-type plug-in fuse, type C, color code: light brown, nominal current: 5 A



Phoenix Contact 2024 © - all rights reserved

<https://www.phoenixcontact.com>

Phoenix Contact USA
586 Fulling Mill Road
Middletown, PA 17057, United States
(+717) 944-1300
info@phoenixcon.com