

UK 10 N BK - Feed-through terminal block



3022328

<https://www.phoenixcontact.com/us/products/3022328>

Please be informed that the data shown in this PDF document is generated from our online catalog. Please find the complete data in the user documentation. Our general terms of use for downloads are valid.



Feed-through terminal block, nom. voltage: 800 V, nominal current: 57 A, number of connections: 2, number of positions: 1, connection method: Screw connection, Rated cross section: 10 mm², cross section: 0.5 mm² - 16 mm², mounting type: NS 35/7,5, NS 35/15, color: black

Commercial data

Item number	3022328
Packing unit	1 pc
Minimum order quantity	50 pc
Sales key	BE12
Product key	BE1211
GTIN	4017918433406
Weight per piece (including packing)	17.371 g
Weight per piece (excluding packing)	16.782 g
Customs tariff number	85369010
Country of origin	CN

UK 10 N BK - Feed-through terminal block



3022328

<https://www.phoenixcontact.com/us/products/3022328>

Technical data

Product properties

Product type	Feed-through terminal block
Number of positions	1
Number of connections	2
Number of rows	1

Insulation characteristics

Overvoltage category	III
Degree of pollution	3

Electrical properties

Rated surge voltage	8 kV
Maximum power dissipation for nominal condition	1.82 W

Connection data

Number of connections per level	2
Nominal cross section	10 mm ²

Level 1 above 1 below 1

Screw thread	M4
Tightening torque	1.5 ... 1.8 Nm
Stripping length	10 mm
Internal cylindrical gage	B6
Connection in acc. with standard	IEC 60947-7-1
Conductor cross section rigid	0.5 mm ² ... 16 mm ²
Cross section AWG	20 ... 6 (converted acc. to IEC)
Conductor cross section flexible	0.5 mm ² ... 10 mm ²
Conductor cross section, flexible [AWG]	20 ... 8 (converted acc. to IEC)
Conductor cross-section flexible (ferrule without plastic sleeve)	0.5 mm ² ... 10 mm ²
Flexible conductor cross section (ferrule with plastic sleeve)	0.5 mm ² ... 6 mm ²
Cross-section with insertion bridge, rigid	10 mm ²
Cross-section with insertion bridge, flexible	10 mm ²
2 conductors with same cross section, solid	0.5 mm ² ... 4 mm ²
2 conductors with same cross section, flexible	0.5 mm ² ... 4 mm ²
2 conductors with same cross section, flexible, with ferrule without plastic sleeve	0.5 mm ² ... 2.5 mm ²
2 conductors with the same cross section, flexible, with TWIN ferrule with plastic sleeve	0.5 mm ² ... 6 mm ²
Nominal current	57 A
Maximum load current	76 A (with 16 mm ² conductor cross section)
Nominal voltage	800 V
Nominal cross section	10 mm ²

UK 10 N BK - Feed-through terminal block



3022328

<https://www.phoenixcontact.com/us/products/3022328>

Ex data

Rated data (ATEX/IECEX)

Identification	⊕ II 2 GD Ex eb IIC Gb
Operating temperature range	-60 °C ... 110 °C
Ex-certified accessories	3003020 D-UK 4/10
	3006027 D-UK 16
	3004210 ATP-UK 5-MTK
	1205066 SZS 1,0X4,0 VDE
	1201442 E/UK
List of bridges	Fixed bridge / FBI 10-10-EX / 0711690
Bridge data	51.5 A / 10 mm ²
List of bridges	Insertion bridge / EB 2-10 / 0203153
	Insertion bridge / EB 3-10 / 0203328
	Insertion bridge / EB 10-10 / 0203137
Bridge data	50 A / 10 mm ²
Ex temperature increase	40 K (59.1 A / 10 mm ²)
Rated voltage	690 V
at bridging with insertion bridge	690 V
for bridging with bridge	690 V
Rated insulation voltage	630 V
output	(Permanent)

Ex level General

Rated current	53.5 A
Maximum load current	67 A
Contact resistance	0.12 mΩ

Ex connection data General

Torque range	1.5 Nm ... 1.8 Nm
Nominal cross section	10 mm ²
Rated cross section AWG	8
Connection capacity rigid	0.5 mm ² ... 16 mm ²
Connection capacity AWG	20 ... 6
Connection capacity flexible	0.5 mm ² ... 10 mm ²
Connection capacity AWG	20 ... 8
2 conductors with same cross section, solid	0.5 mm ² ... 4 mm ²
2 conductors with the same cross-section AWG rigid	20 ... 12
2 conductors with same cross section, stranded	0.5 mm ² ... 4 mm ²
2 conductors with the same cross-section AWG flexible	20 ... 12

Dimensions

Width	10.2 mm
End cover width	1.8 mm
Height	42.5 mm

UK 10 N BK - Feed-through terminal block



3022328

<https://www.phoenixcontact.com/us/products/3022328>

Depth on NS 32	52.3 mm
Depth on NS 35/7,5	47.3 mm
Depth on NS 35/15	54.8 mm

Material specifications

Color	black
Flammability rating according to UL 94	V0
Insulating material group	I
Insulating material	PA
Static insulating material application in cold	-60 °C
Temperature index of insulation material (DIN EN 60216-1 (VDE 0304-21))	130 °C
Relative insulation material temperature index (Elec., UL 746 B)	130 °C
Fire protection for rail vehicles (DIN EN 45545-2) R22	HL 1 - HL 3
Fire protection for rail vehicles (DIN EN 45545-2) R23	HL 1 - HL 3
Fire protection for rail vehicles (DIN EN 45545-2) R24	HL 1 - HL 3
Fire protection for rail vehicles (DIN EN 45545-2) R26	HL 1 - HL 3
Calorimetric heat release NFPA 130 (ASTM E 1354)	28 MJ/kg
Surface flammability NFPA 130 (ASTM E 162)	passed
Specific optical density of smoke NFPA 130 (ASTM E 662)	passed
Smoke gas toxicity NFPA 130 (SMP 800C)	passed

Electrical tests

Surge voltage test

Test voltage setpoint	9.8 kV
Result	Test passed

Temperature-rise test

Requirement temperature-rise test	Increase in temperature \leq 45 K
Result	Test passed
Short-time withstand current 10 mm ²	1.2 kA
Short-time withstand current 16 mm ²	1.92 kA
Result	Test passed

Power-frequency withstand voltage

Test voltage setpoint	2 kV
Result	Test passed

Mechanical properties

Mechanical data

Open side panel	Yes
-----------------	-----

Mechanical tests

Mechanical strength

UK 10 N BK - Feed-through terminal block



3022328

<https://www.phoenixcontact.com/us/products/3022328>

Result	Test passed
--------	-------------

Attachment on the carrier

DIN rail/fixing support	NS 32/NS 35
Test force setpoint	5 N
Result	Test passed

Test for conductor damage and slackening

Rotation speed	10 rpm
Revolutions	135
Conductor cross section/weight	0.5 mm ² / 0.3 kg
	10 mm ² / 2 kg
	16 mm ² / 2.9 kg
Result	Test passed

Environmental and real-life conditions

Needle-flame test

Time of exposure	30 s
Result	Test passed

Ambient conditions

Ambient temperature (storage/transport)	-25 °C ... 60 °C (for a short time, not exceeding 24 h, -60 °C to +70 °C)
Ambient temperature (assembly)	-5 °C ... 70 °C
Ambient temperature (actuation)	-5 °C ... 70 °C
Permissible humidity (storage/transport)	30 % ... 70 %

Standards and regulations

Connection in acc. with standard	IEC 60947-7-1
----------------------------------	---------------

Mounting

Mounting type	NS 35/7,5
	NS 35/15

UK 10 N BK - Feed-through terminal block



3022328

<https://www.phoenixcontact.com/us/products/3022328>

Approvals

To download certificates, visit the product detail page: <https://www.phoenixcontact.com/us/products/3022328>

DNV

Approval ID: TAE00001CT



CSA

Approval ID: 13631

	Nominal voltage U_N	Nominal current I_N	Cross section AWG	Cross section mm^2
Use group B				
	600 V	65 A	24 - 6	-
Use group C				
	600 V	65 A	24 - 6	-



IECEE CB Scheme

Approval ID: NL-39959

	Nominal voltage U_N	Nominal current I_N	Cross section AWG	Cross section mm^2
	800 V	57 A	-	- 10



EAC

Approval ID: RU C-DE.BL08.B.00534



cULus Recognized

Approval ID: E60425

	Nominal voltage U_N	Nominal current I_N	Cross section AWG	Cross section mm^2
Use group B				
	600 V	65 A	24 - 6	-
Use group C				
	600 V	65 A	24 - 6	-
Use group F				
	800 V	65 A	24 - 6	-



RS

Approval ID: 22.44.01.00083.250



KEMA-KEUR

Approval ID: 71-119849

	Nominal voltage U_N	Nominal current I_N	Cross section AWG	Cross section mm^2
	800 V	57 A	-	- 10

UK 10 N BK - Feed-through terminal block



3022328

<https://www.phoenixcontact.com/us/products/3022328>



ATEX

Approval ID: KEMA98ATEX1786U



cUL Recognized

Approval ID: E192998

	Nominal voltage U_N	Nominal current I_N	Cross section AWG	Cross section mm^2
	600 V	65 A	24 - 6	-



EAC Ex

Approval ID: RU C-DE.HA91.B.00066



GL

Approval ID: 98876-96 HH

	Nominal voltage U_N	Nominal current I_N	Cross section AWG	Cross section mm^2
EEx e II part certificate	690 V	57 A	-	- 10



IECEx

Approval ID: IECEx KEM 06.0029U



UL Recognized

Approval ID: E192998

	Nominal voltage U_N	Nominal current I_N	Cross section AWG	Cross section mm^2
	600 V	65 A	24 - 6	-



CCC

Approval ID: 2020322313000623



DNV GL-EX

Approval ID: TAE00003K6

	Nominal voltage U_N	Nominal current I_N	Cross section AWG	Cross section mm^2
EEx e II part certificate	440 V	32 A	-	- 2.5

cULus Recognized

UK 10 N BK - Feed-through terminal block



3022328

<https://www.phoenixcontact.com/us/products/3022328>

Classifications

ECLASS

ECLASS-11.0	27141120
ECLASS-13.0	27250101

ETIM

ETIM 9.0	EC000897
----------	----------

UNSPSC

UNSPSC 21.0	39121400
-------------	----------

UK 10 N BK - Feed-through terminal block



3022328

<https://www.phoenixcontact.com/us/products/3022328>

Environmental product compliance


China RoHS	Environmentally friendly use period: unlimited = EFUP-e
	No hazardous substances above threshold values

UK 10 N BK - Feed-through terminal block

3022328

<https://www.phoenixcontact.com/us/products/3022328>

Accessories

 Note: Applying some accessories below might limit this product.

KB- 10 - Chain bridge

0203205

<https://www.phoenixcontact.com/us/products/0203205>



Chain bridge, pitch: 10 mm, number of positions: 1, color: silver

FBI 2-10 - Fixed bridge

0203483

<https://www.phoenixcontact.com/us/products/0203483>



Fixed bridge, pitch: 10 mm, number of positions: 2, color: silver

UK 10 N BK - Feed-through terminal block

3022328

<https://www.phoenixcontact.com/us/products/3022328>



FBI 10-10 - Fixed bridge

0203276

<https://www.phoenixcontact.com/us/products/0203276>

Fixed bridge, pitch: 10 mm, number of positions: 10, color: silver



 Max. current carrying capacity: 76 A

FB 10-10-EX - Fixed bridge

0203247

<https://www.phoenixcontact.com/us/products/0203247>

Fixed bridge, pitch: 10 mm, number of positions: 10, color: silver



UK 10 N BK - Feed-through terminal block

3022328

<https://www.phoenixcontact.com/us/products/3022328>



FB 4-10 - Fixed bridge

0203182

<https://www.phoenixcontact.com/us/products/0203182>

Fixed bridge, number of positions: 4, color: silver



FB 10-10 - Fixed bridge

0203179

<https://www.phoenixcontact.com/us/products/0203179>

Fixed bridge, pitch: 10 mm, number of positions: 10, color: silver



UK 10 N BK - Feed-through terminal block

3022328

<https://www.phoenixcontact.com/us/products/3022328>



FB 3-10 - Fixed bridge

0203140

<https://www.phoenixcontact.com/us/products/0203140>



Fixed bridge, pitch: 10 mm, number of positions: 3, color: silver


EB 2-10 - Insertion bridge

0203153

<https://www.phoenixcontact.com/us/products/0203153>



Insertion bridge, pitch: 10 mm, number of positions: 2, color: gray

 Max. current carrying capacity: 70 A

UK 10 N BK - Feed-through terminal block

3022328

<https://www.phoenixcontact.com/us/products/3022328>

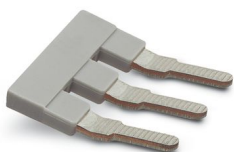



EB 3-10 - Insertion bridge

0203328

<https://www.phoenixcontact.com/us/products/0203328>

Insertion bridge, pitch: 10 mm, number of positions: 3, color: gray



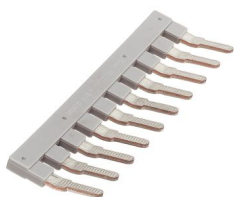
 Max. current carrying capacity: 70 A


EB 10-10 - Insertion bridge

0203137

<https://www.phoenixcontact.com/us/products/0203137>

Insertion bridge, pitch: 10 mm, number of positions: 10, color: gray



 Max. current carrying capacity: 70 A

UK 10 N BK - Feed-through terminal block

3022328

<https://www.phoenixcontact.com/us/products/3022328>



SB 2- 8/13 N - Switching jumper

0200062

<https://www.phoenixcontact.com/us/products/0200062>



Switching jumper, pitch: 13 mm, number of positions: 2, color: silver

WS 5-10 - Warning label

1004429

<https://www.phoenixcontact.com/us/products/1004429>



Warning label, Plate, yellow/black, labeled: Lightning flash and warning in English, mounting type: plug in, for terminal block width: 10 mm, diameter: 0 mm

UK 10 N BK - Feed-through terminal block

3022328

<https://www.phoenixcontact.com/us/products/3022328>



WS 4-10 - Warning label

1004225

<https://www.phoenixcontact.com/us/products/1004225>

Warning label, Plate, yellow/black, labeled: Lightning flash and warning in English, mounting type: plug in, for terminal block width: 10 mm, diameter: 0 mm



STL 10N/5N - Step bracket

0204110

<https://www.phoenixcontact.com/us/products/0204110>

Step bracket, pitch: 5 mm, number of positions: 2, color: silver



UK 10 N BK - Feed-through terminal block



3022328

<https://www.phoenixcontact.com/us/products/3022328>

TS-K - Separating plate

1302215

<https://www.phoenixcontact.com/us/products/1302215>



Separating plate, depth: 22 mm, width: 0.5 mm, height: 22 mm, color: gray

ATP-UK - Partition plate

3003224

<https://www.phoenixcontact.com/us/products/3003224>



Partition plate, depth: 45.7 mm, width: 1.5 mm, height: 56 mm, color: gray

UK 10 N BK - Feed-through terminal block

3022328

<https://www.phoenixcontact.com/us/products/3022328>



SBS10:UNBEDRUCKT - Marker card

1007248

<https://www.phoenixcontact.com/us/products/1007248>



Marker card, Card, white, unlabeled, can be labeled with: Marker pen, perforated, mounting type: snapped, snap into flat marker groove, for terminal block width: 10 mm, lettering field size: 6 x 10.1 mm, Number of individual labels: 250

SCP 2-10 - Short-circuit connector

3070412

<https://www.phoenixcontact.com/us/products/3070412>



Short-circuit connector, pitch: 10.15 mm, number of positions: 2, color: orange

UK 10 N BK - Feed-through terminal block

3022328

<https://www.phoenixcontact.com/us/products/3022328>



NS 32 PERF 2000MM-VPE 10 - DIN rail perforated

1201002

<https://www.phoenixcontact.com/us/products/1201002>



DIN rail perforated, Pack of 10 (20 m), acc. to EN 60715, material: Steel, galvanized, passivated with a thick layer, G profile, color: silver

NS 32 UNPERF 2000MM-VPE 10 - DIN rail, unperforated

1201015

<https://www.phoenixcontact.com/us/products/1201015>



DIN rail, unperforated, Pack of 10 (20 m), acc. to EN 60715, material: Steel, galvanized, passivated with a thick layer, G profile, color: silver

UK 10 N BK - Feed-through terminal block

3022328

<https://www.phoenixcontact.com/us/products/3022328>



NS 35/ 7,5 PERF 2000MM - DIN rail perforated

0801733

<https://www.phoenixcontact.com/us/products/0801733>



DIN rail perforated, Pack of 25 (50 m), acc. to EN 60715, material: Steel, galvanized, passivated with a thick layer, Standard profile, color: silver

NS 35/ 7,5 UNPERF 2000MM - DIN rail, unperforated

0801681

<https://www.phoenixcontact.com/us/products/0801681>



DIN rail, unperforated, Pack of 25 (50 m), acc. to EN 60715, material: Steel, galvanized, passivated with a thick layer, Standard profile, color: silver

UK 10 N BK - Feed-through terminal block

3022328

<https://www.phoenixcontact.com/us/products/3022328>



NS 35/ 7,5 WH PERF 2000MM - DIN rail perforated

1204119

<https://www.phoenixcontact.com/us/products/1204119>



DIN rail perforated, Pack of 25 (50 m), acc. to EN 60715, material: Steel, Galvanized, white passivated, Standard profile, color: silver

NS 35/ 7,5 WH UNPERF 2000MM-VPE 10 - DIN rail, unperforated

1204122

<https://www.phoenixcontact.com/us/products/1204122>



DIN rail, unperforated, Pack of 10 (20 m), acc. to EN 60715, material: Steel, Galvanized, white passivated, Standard profile, color: silver

UK 10 N BK - Feed-through terminal block

3022328

<https://www.phoenixcontact.com/us/products/3022328>



NS 35/ 7,5 AL UNPERF 2000MM - DIN rail, unperforated

0801704

<https://www.phoenixcontact.com/us/products/0801704>



DIN rail, unperforated, Pack of 25 (50 m), acc. to EN 60715, material: Aluminum, uncoated, Standard profile, color: silver

NS 35/ 7,5 ZN PERF 2000MM - DIN rail perforated

1206421

<https://www.phoenixcontact.com/us/products/1206421>



DIN rail perforated, Pack of 25 (50 m), acc. to EN 60715, material: Steel, galvanized, Standard profile, color: silver

UK 10 N BK - Feed-through terminal block

3022328

<https://www.phoenixcontact.com/us/products/3022328>



NS 35/ 7,5 ZN UNPERF 2000MM - DIN rail, unperforated

1206434

<https://www.phoenixcontact.com/us/products/1206434>



DIN rail, unperforated, Pack of 25 (50 m), acc. to EN 60715, material: Steel, galvanized, Standard profile, color: silver

NS 35/ 7,5 CU UNPERF 2000MM-VPE 10 - DIN rail, unperforated

0801762

<https://www.phoenixcontact.com/us/products/0801762>



DIN rail, unperforated, Pack of 10 (20 m), acc. to EN 60715, material: Copper, uncoated, Standard profile, color: copper-colored

UK 10 N BK - Feed-through terminal block

3022328

<https://www.phoenixcontact.com/us/products/3022328>



NS 35/ 7,5 CAP - End cap

1206560

<https://www.phoenixcontact.com/us/products/1206560>

DIN rail end piece, for DIN rail NS 35/7.5



NS 35/15 PERF 2000MM - DIN rail perforated

1201730

<https://www.phoenixcontact.com/us/products/1201730>



DIN rail perforated, Pack of 25 (50 m), similar to EN 60715, material: Steel, galvanized, passivated with a thick layer, Standard profile, color: silver

UK 10 N BK - Feed-through terminal block

3022328

<https://www.phoenixcontact.com/us/products/3022328>



NS 35/15 UNPERF 2000MM - DIN rail, unperforated

1201714

<https://www.phoenixcontact.com/us/products/1201714>



DIN rail, unperforated, Pack of 25 (50 m), similar to EN 60715, material: Steel, galvanized, passivated with a thick layer, Standard profile, color: silver

NS 35/15 WH PERF 2000MM - DIN rail perforated

0806602

<https://www.phoenixcontact.com/us/products/0806602>



DIN rail perforated, Pack of 25 (50 m), similar to EN 60715, material: Steel, Galvanized, white passivated, Standard profile, color: white

UK 10 N BK - Feed-through terminal block

3022328

<https://www.phoenixcontact.com/us/products/3022328>



NS 35/15 WH UNPERF 2000MM-VPE 10 - DIN rail, unperforated

1204135

<https://www.phoenixcontact.com/us/products/1204135>



DIN rail, unperforated, Pack of 10 (20 m), similar to EN 60715, material: Steel, Galvanized, white passivated, Standard profile, color: silver

NS 35/15 AL UNPERF 2000MM - DIN rail, unperforated

1201756

<https://www.phoenixcontact.com/us/products/1201756>



DIN rail, unperforated, similar to EN 60715, material: Aluminum, uncoated, Standard profile, color: silver

UK 10 N BK - Feed-through terminal block

3022328

<https://www.phoenixcontact.com/us/products/3022328>



NS 35/15 ZN PERF 2000MM - DIN rail perforated

1206599

<https://www.phoenixcontact.com/us/products/1206599>



DIN rail perforated, Pack of 25 (50 m), similar to EN 60715, material: Steel, galvanized, Standard profile, color: silver

NS 35/15 ZN UNPERF 2000MM - DIN rail, unperforated

1206586

<https://www.phoenixcontact.com/us/products/1206586>



DIN rail, unperforated, Pack of 25 (50 m), similar to EN 60715, material: Steel, galvanized, Standard profile, color: silver

UK 10 N BK - Feed-through terminal block

3022328

<https://www.phoenixcontact.com/us/products/3022328>



NS 35/15 CU UNPERF 2000MM-VPE 10 - DIN rail, unperforated

1201895

<https://www.phoenixcontact.com/us/products/1201895>



DIN rail, unperforated, Pack of 10 (20 m), similar to EN 60715, material: Copper, uncoated, Standard profile, color: copper-colored

NS 35/15 CAP - End cap

1206573

<https://www.phoenixcontact.com/us/products/1206573>

DIN rail end piece, for DIN rail NS 35/15



UK 10 N BK - Feed-through terminal block

3022328

<https://www.phoenixcontact.com/us/products/3022328>



NS 35/15-2,3 UNPERF 2000MM-VPE 10 - DIN rail, unperforated

1201798

<https://www.phoenixcontact.com/us/products/1201798>



DIN rail, unperforated, Pack of 10 (20 m), acc. to EN 60715, material: Steel, galvanized, passivated with a thick layer, Standard profile 2.3 mm, color: silver

ZB 10:UNBEDRUCKT - Zack marker strip

1053001

<https://www.phoenixcontact.com/us/products/1053001>



Zack marker strip, Strip, white, unlabeled, can be labeled with: PLOTMARK, CMS-P1-PLOTTER, mounting type: snapped, for terminal block width: 10.2 mm, lettering field size: 10.5 x 10.15 mm, Number of individual labels: 10

UK 10 N BK - Feed-through terminal block

3022328

<https://www.phoenixcontact.com/us/products/3022328>



ZB 10 CUS - Zack marker strip

0824941

<https://www.phoenixcontact.com/us/products/0824941>



Zack marker strip, can be ordered: Strip, white, labeled according to customer specifications, mounting type: snap into tall marker groove, for terminal block width: 10.2 mm, lettering field size: 10,15 x 10,5 mm, Number of individual labels: 10

ZB10,LGS:FORTL.ZAHLEN - Zack marker strip

1053014

<https://www.phoenixcontact.com/us/products/1053014>



Zack marker strip, Strip, white, labeled, can be labeled with: CMS-P1-PLOTTER, printed horizontally: consecutive numbers 1 ... 10, 11 ... 20, etc. up to 91 ... 100, mounting type: snapped, for terminal block width: 10.2 mm, lettering field size: 10,15 x 10,5 mm, Number of individual labels: 10

UK 10 N BK - Feed-through terminal block



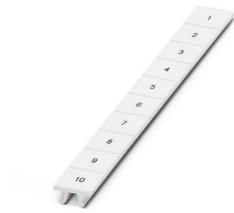
3022328

<https://www.phoenixcontact.com/us/products/3022328>

ZB10,QR:FORTL.ZAHLEN - Zack marker strip

1053027

<https://www.phoenixcontact.com/us/products/1053027>

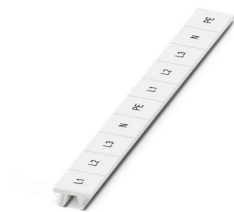


Zack marker strip, Strip, white, labeled, can be labeled with: CMS-P1-PLOTTER, Printed vertically: consecutive numbers 1 ... 10, 11 ... 20, etc. up to 91 ... 100, mounting type: snapped, for terminal block width: 10.2 mm, lettering field size: 10,15 x 10,5 mm, Number of individual labels: 10

ZB10,LGS:L1-N,PE - Marker for terminal blocks

1053412

<https://www.phoenixcontact.com/us/products/1053412>



Marker for terminal blocks, Strip, white, labeled, can be labeled with: CMS-P1-PLOTTER, horizontal: L1, L2, L3, N, PE, L1, L2, L3, N, PE, mounting type: snapped, for terminal block width: 10.2 mm, lettering field size: 10,15 x 10,5 mm, Number of individual labels: 10

UK 10 N BK - Feed-through terminal block

3022328

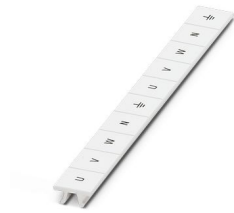
<https://www.phoenixcontact.com/us/products/3022328>



ZB10,LGS:U-N - Marker for terminal blocks

1053438

<https://www.phoenixcontact.com/us/products/1053438>



Marker for terminal blocks, Strip, white, labeled, can be labeled with: CMS-P1-PLOTTER, horizontal: U, V, W, N, GND, U, V, W, N, GND, mounting type: snapped, for terminal block width: 10.2 mm, lettering field size: 10,15 x 10,5 mm, Number of individual labels: 10

UC-TM 10 - Marker for terminal blocks

0818069

<https://www.phoenixcontact.com/us/products/0818069>



Marker for terminal blocks, Sheet, white, unlabeled, can be labeled with: BLUEMARK ID COLOR, BLUEMARK ID, BLUEMARK CLED, PLOTMARK, CMS-P1-PLOTTER, mounting type: snapped, for terminal block width: 10.2 mm, lettering field size: 9.6 x 10.5 mm, Number of individual labels: 48

UK 10 N BK - Feed-through terminal block

3022328

<https://www.phoenixcontact.com/us/products/3022328>



UC-TM 10 CUS - Marker for terminal blocks

0824605

<https://www.phoenixcontact.com/us/products/0824605>



Marker for terminal blocks, can be ordered: by sheet, white, labeled according to customer specifications, mounting type: snap into tall marker groove, for terminal block width: 10.2 mm, lettering field size: 9.6 x 10.5 mm, Number of individual labels: 48

UCT-TM 10 - Marker for terminal blocks

0829142

<https://www.phoenixcontact.com/us/products/0829142>



Marker for terminal blocks, Sheet, white, unlabeled, can be labeled with: TOPMARK NEO, TOPMARK LASER, BLUEMARK ID COLOR, BLUEMARK ID, BLUEMARK CLED, THERMOMARK PRIME, THERMOMARK CARD 2.0, THERMOMARK CARD, mounting type: snapped, for terminal block width: 10.2 mm, lettering field size: 8.9 x 9.6 mm, Number of individual labels: 36

UK 10 N BK - Feed-through terminal block

3022328

<https://www.phoenixcontact.com/us/products/3022328>



UCT-TM 10 CUS - Marker for terminal blocks

0829623

<https://www.phoenixcontact.com/us/products/0829623>



Marker for terminal blocks, can be ordered: by sheet, white, labeled according to customer specifications, mounting type: snap into tall marker groove, for terminal block width: 10.2 mm, lettering field size: 8.9 x 9.6 mm, Number of individual labels: 36

PS-MT - Test plug

0311647

<https://www.phoenixcontact.com/us/products/0311647>



Test plug, number of positions: 1, color: silver

UK 10 N BK - Feed-through terminal block

3022328

<https://www.phoenixcontact.com/us/products/3022328>



PS-IH WH - Insulating sleeve

0311566

<https://www.phoenixcontact.com/us/products/0311566>



Insulating sleeve, number of positions: 1, color: white

PS-IH RD - Insulating sleeve

0311579

<https://www.phoenixcontact.com/us/products/0311579>



Insulating sleeve, number of positions: 1, color: red

UK 10 N BK - Feed-through terminal block

3022328

<https://www.phoenixcontact.com/us/products/3022328>



PS-IH BU - Insulating sleeve

0311582

<https://www.phoenixcontact.com/us/products/0311582>



Insulating sleeve, number of positions: 1, color: blue

PS-IH YE - Insulating sleeve

0311595

<https://www.phoenixcontact.com/us/products/0311595>



Insulating sleeve, number of positions: 1, color: yellow

UK 10 N BK - Feed-through terminal block

3022328

<https://www.phoenixcontact.com/us/products/3022328>



PS-IH GN - Insulating sleeve

0311605

<https://www.phoenixcontact.com/us/products/0311605>



Insulating sleeve, number of positions: 1, color: green

PS-IH GY - Insulating sleeve

0311621

<https://www.phoenixcontact.com/us/products/0311621>



Insulating sleeve, number of positions: 1, color: gray

UK 10 N BK - Feed-through terminal block

3022328

<https://www.phoenixcontact.com/us/products/3022328>



PS-IH BK - Insulating sleeve

0311634

<https://www.phoenixcontact.com/us/products/0311634>



Insulating sleeve, number of positions: 1, color: black

PS-IH VT - Insulating sleeve

0311618

<https://www.phoenixcontact.com/us/products/0311618>



Insulating sleeve, number of positions: 1, color: violet

UK 10 N BK - Feed-through terminal block

3022328

<https://www.phoenixcontact.com/us/products/3022328>



CLIPFIX 35 - End bracket

3022218

<https://www.phoenixcontact.com/us/products/3022218>



Quick mounting end clamp for NS 35/7,5 DIN rail or NS 35/15 DIN rail, with marking option, width: 9.5 mm, color: gray

CLIPFIX 35-5 - End bracket

3022276

<https://www.phoenixcontact.com/us/products/3022276>



Quick mounting end clamp for NS 35/7,5 DIN rail or NS 35/15 DIN rail, with marking option, with parking option for FBS...5, FBS...6, KSS 5, KSS 6, width: 5.15 mm, color: gray

UK 10 N BK - Feed-through terminal block

3022328

<https://www.phoenixcontact.com/us/products/3022328>

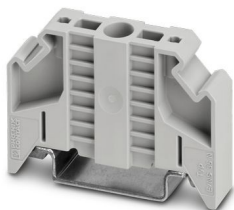


E/NS 35 N - End bracket

0800886

<https://www.phoenixcontact.com/us/products/0800886>

End clamp, width: 9.5 mm, color: gray



E/UK - End bracket

1201442

<https://www.phoenixcontact.com/us/products/1201442>

End bracket, Mounting on a DIN rail NS 32 or NS 35, material: PA, color: gray



UK 10 N BK - Feed-through terminal block

3022328

<https://www.phoenixcontact.com/us/products/3022328>



E/UK 1 - End bracket

1201413

<https://www.phoenixcontact.com/us/products/1201413>



End clamps, for supporting the ends of double-level and three-level terminal blocks, width: 10 mm, color: gray

PSBJ 4/15/6 FARBLOS - Test plug strip

0303419

<https://www.phoenixcontact.com/us/products/0303419>



Test plug strip, number of positions: 1, color: transparent

UK 10 N BK - Feed-through terminal block

3022328

<https://www.phoenixcontact.com/us/products/3022328>



PSBJ 4/15/6 WH - Test plug strip

0303312

<https://www.phoenixcontact.com/us/products/0303312>



Test plug strip, number of positions: 1, color: white

PSBJ 4/15/6 RD - Test plug strip

0303325

<https://www.phoenixcontact.com/us/products/0303325>



Test plug strip, number of positions: 1, color: red

UK 10 N BK - Feed-through terminal block

3022328

<https://www.phoenixcontact.com/us/products/3022328>



PSBJ 4/15/6 BU - Test plug strip

0303354

<https://www.phoenixcontact.com/us/products/0303354>



Test plug strip, number of positions: 1, color: blue

PSBJ 4/15/6 YE - Test plug strip

0303367

<https://www.phoenixcontact.com/us/products/0303367>



Test plug strip, number of positions: 1, color: yellow

UK 10 N BK - Feed-through terminal block

3022328

<https://www.phoenixcontact.com/us/products/3022328>



PSBJ 4/15/6 GN - Test plug strip

0303370

<https://www.phoenixcontact.com/us/products/0303370>



Test plug strip, number of positions: 1, color: green

PSBJ 4/15/6 VT - Test plug strip

0303383

<https://www.phoenixcontact.com/us/products/0303383>



Test plug strip, number of positions: 1, color: violet

UK 10 N BK - Feed-through terminal block

3022328

<https://www.phoenixcontact.com/us/products/3022328>



PSBJ 4/15/6 GY - Test plug strip

0303396

<https://www.phoenixcontact.com/us/products/0303396>



Test plug strip, number of positions: 1, color: gray

PSBJ 4/15/6 BK - Test plug strip

0303406

<https://www.phoenixcontact.com/us/products/0303406>



Test plug strip, number of positions: 1, color: black

UK 10 N BK - Feed-through terminal block

3022328

<https://www.phoenixcontact.com/us/products/3022328>



PSB 4/7/6 - Test plug strip

0303299

<https://www.phoenixcontact.com/us/products/0303299>



Test plug strip, number of positions: 1, color: silver

D-UK 4/10 - End cover

3003020

<https://www.phoenixcontact.com/us/products/3003020>



End cover, depth: 35.9 mm, width: 1.8 mm, height: 42.5 mm, color: gray

UK 10 N BK - Feed-through terminal block

3022328

<https://www.phoenixcontact.com/us/products/3022328>



D-UK 4/10 BU - End cover

3003101

<https://www.phoenixcontact.com/us/products/3003101>

End cover, depth: 47 mm, width: 1.8 mm, height: 42.5 mm, color: blue



SZS 1,0X4,0 VDE - Screwdriver

1205066

<https://www.phoenixcontact.com/us/products/1205066>

Screwdriver, slot-headed, VDE insulated, size: 1.0 x 4.0 x 100 mm, 2-component grip, with non-slip grip



Phoenix Contact 2024 © - all rights reserved
<https://www.phoenixcontact.com>

Phoenix Contact USA
586 Fulling Mill Road
Middletown, PA 17057, United States
(+717) 944-1300
info@phoenixcon.com