

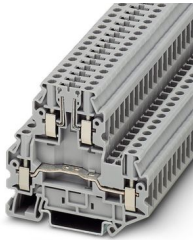
UTT 4-TG P/P - Disconnect terminal block



3044801

<https://www.phoenixcontact.com/us/products/3044801>

Please be informed that the data shown in this PDF document is generated from our online catalog. Please find the complete data in the user documentation. Our general terms of use for downloads are valid.



Disconnect terminal block, Current and voltage are determined by the plug used., With test socket screws for insertion of test plugs, nom. voltage: 500 V, nominal current: 30 A, connection method: Screw connection, Rated cross section: 4 mm², cross section: 0.14 mm² - 6 mm², Disconnect zone, mounting: NS 35/7,5, NS 35/15, color: gray

Commercial data

Item number	3044801
Packing unit	50 pc
Sales key	BE01
Product key	BE1114
Catalog page	Page 59 (CL-2009)
GTIN	4017918997137
Weight per piece (including packing)	20.889 g
Weight per piece (excluding packing)	20.889 g
Customs tariff number	85369010
Country of origin	PL

UTT 4-TG P/P - Disconnect terminal block



3044801

<https://www.phoenixcontact.com/us/products/3044801>

Technical data

Notes

General	Current and voltage are determined by the plug used.
---------	------------------------------------------------------

Product properties

Product type	Disconnect terminal block
Number of connections	4
Number of rows	2
Potentials	1

Insulation characteristics

Overvoltage category	III
Degree of pollution	3

Electrical properties

Rated surge voltage	6 kV
Maximum power dissipation for nominal condition	1.02 W

Connection data

Number of connections per level	2
Nominal cross section	4 mm ²

Level 1

Screw thread	M3
Tightening torque	0.6 ... 0.8 Nm
Stripping length	9 mm
Internal cylindrical gage	A4
Connection in acc. with standard	IEC 60947-7-1
Conductor cross section rigid	0.14 mm ² ... 6 mm ²
Cross section AWG	26 ... 10 (converted acc. to IEC)
Conductor cross section flexible	0.14 mm ² ... 6 mm ²
Conductor cross section, flexible [AWG]	26 ... 10 (converted acc. to IEC)
Conductor cross-section flexible (ferrule without plastic sleeve)	0.14 mm ² ... 4 mm ²
Flexible conductor cross section (ferrule with plastic sleeve)	0.14 mm ² ... 4 mm ²
2 conductors with same cross section, solid	0.14 mm ² ... 1.5 mm ²
2 conductors with same cross section, flexible	0.14 mm ² ... 1.5 mm ²
2 conductors with same cross section, flexible, with ferrule without plastic sleeve	0.14 mm ² ... 1.5 mm ²
2 conductors with the same cross section, flexible, with TWIN ferrule with plastic sleeve	0.5 mm ² ... 2.5 mm ²
Nominal current	30 A
Maximum load current	38 A (with 6 mm ² conductor cross section)
Nominal voltage	500 V
Nominal cross section	4 mm ²

UTT 4-TG P/P - Disconnect terminal block



3044801

<https://www.phoenixcontact.com/us/products/3044801>

Disconnect zone

Nominal current	20 A
Maximum load current	20 A (with 6 mm ² conductor cross section)
Nominal voltage	500 V

Dimensions

Width	6.2 mm
End cover width	2.2 mm
Height	69.9 mm
Depth on NS 35/7,5	65 mm
Depth on NS 35/15	72.5 mm

Material specifications

Color	gray
Flammability rating according to UL 94	V0
Insulating material group	I
Insulating material	PA
Static insulating material application in cold	-60 °C
Temperature index of insulation material (DIN EN 60216-1 (VDE 0304-21))	125 °C
Relative insulation material temperature index (Elec., UL 746 B)	130 °C
Fire protection for rail vehicles (DIN EN 45545-2) R22	HL 1 - HL 3
Fire protection for rail vehicles (DIN EN 45545-2) R23	HL 1 - HL 3
Fire protection for rail vehicles (DIN EN 45545-2) R24	HL 1 - HL 3
Fire protection for rail vehicles (DIN EN 45545-2) R26	HL 1 - HL 3
Calorimetric heat release NFPA 130 (ASTM E 1354)	28 MJ/kg
Surface flammability NFPA 130 (ASTM E 162)	passed
Specific optical density of smoke NFPA 130 (ASTM E 662)	passed
Smoke gas toxicity NFPA 130 (SMP 800C)	passed

Electrical tests

Surge voltage test

Result	Test passed
Short-time withstand current 4 mm ²	0.48 kA
Result	Test passed

Power-frequency withstand voltage

Test voltage setpoint	1.89 kV
Result	Test passed

Mechanical properties

Mechanical data

Open side panel	Yes
-----------------	-----

UTT 4-TG P/P - Disconnect terminal block



3044801

<https://www.phoenixcontact.com/us/products/3044801>

Mechanical tests

Mechanical strength

Result	Test passed
--------	-------------

Attachment on the carrier

Result	Test passed
--------	-------------

Test for conductor damage and slackening

Rotation speed	10 (+/- 2) rpm
Revolutions	135
Conductor cross section/weight	0.14 mm ² / 0.2 kg
	4 mm ² / 0.9 kg
	6 mm ² / 1.4 kg
Result	Test passed

Environmental and real-life conditions

Needle-flame test

Time of exposure	30 s
Result	Test passed

Oscillation/broadband noise

Specification	DIN EN 50155 (VDE 0115-200):2018-05
	DIN EN 50155 (VDE 0115-200):2018-05
Spectrum	Service life test category 2, bogie-mounted
	Service life test category 2, bogie-mounted
Frequency	$f_1 = 5 \text{ Hz}$ to $f_2 = 250 \text{ Hz}$
	$f_1 = 5 \text{ Hz}$ to $f_2 = 250 \text{ Hz}$
ASD level	6.12 (m/s ²) ² /Hz
	6.12 (m/s ²) ² /Hz
Acceleration	3.12g
	3.12g
Test duration per axis	5 h
	5 h
Test directions	X-, Y- and Z-axis
	X-, Y- and Z-axis

Shocks

Pulse shape	Semi-sinusoidal
	Semi-sinusoidal
Acceleration	30g
	30g
Shock duration	18 ms
	18 ms
Number of shocks per direction	3

UTTB 4-TG P/P - Disconnect terminal block



3044801

<https://www.phoenixcontact.com/us/products/3044801>

	3
Test directions	X-, Y- and Z-axis (pos. and neg.)
	X-, Y- and Z-axis (pos. and neg.)

Ambient conditions

Ambient temperature (operation)	-60 °C ... 110 °C (Operating temperature range incl. self-heating; for max. short-term operating temperature, see RTI Elec.)
Ambient temperature (storage/transport)	-25 °C ... 60 °C ()
Ambient temperature (assembly)	-5 °C ... 70 °C
Ambient temperature (actuation)	-5 °C ... 70 °C
Permissible humidity (operation)	20 % ... 90 %
Permissible humidity (storage/transport)	30 % ... 70 %

Standards and regulations

Connection in acc. with standard	IEC 60947-7-1
----------------------------------	---------------

Mounting

Mounting type	NS 35/7,5
	NS 35/15

UTTB 4-TG P/P - Disconnect terminal block



3044801

<https://www.phoenixcontact.com/us/products/3044801>

Drawings

Circuit diagram



UTT8 4-TG P/P - Disconnect terminal block





3044801


<https://www.phoenixcontact.com/us/products/3044801>

Approvals

To download certificates, visit the product detail page: <https://www.phoenixcontact.com/us/products/3044801>

 CSA Approval ID: 13631				
	Nominal voltage U_N	Nominal current I_N	Cross section AWG	Cross section mm^2
Use group B				
upper level	300 V	5 A	26 - 10	-
lower level	300 V	30 A	26 - 10	-
Use group C				
upper level	300 V	5 A	26 - 10	-
lower level	300 V	30 A	26 - 10	-
Use group D				
	600 V	5 A	26 - 10	-

 EAC Approval ID: RU C-DE.BL08.B.00534				
-------------------------------------------------------------------------------------------------------------------------------------	--	--	--	--

 cULus Recognized Approval ID: E60425				
	Nominal voltage U_N	Nominal current I_N	Cross section AWG	Cross section mm^2
Use group B				
upper level	300 V	16 A	26 - 10	-
lower level	300 V	30 A	26 - 10	-
Multi-conductor connection	300 V	30 A	26 - 14	-
Use group C				
upper level	300 V	16 A	26 - 10	-
lower level	300 V	30 A	26 - 10	-
Multi-conductor connection	300 V	30 A	26 - 14	-
Use group D				
	600 V	5 A	26 - 10	-

UTT8 4-TG P/P - Disconnect terminal block



3044801

<https://www.phoenixcontact.com/us/products/3044801>

Classifications

ECLASS

ECLASS-11.0	27141126
ECLASS-12.0	27141126
ECLASS-13.0	27250108

ETIM

ETIM 9.0	EC000902
----------	----------

UNSPSC

UNSPSC 21.0	39121400
-------------	----------

UTT8 4-TG P/P - Disconnect terminal block



3044801

<https://www.phoenixcontact.com/us/products/3044801>

Environmental product compliance


REACH SVHC	Lead 7439-92-1
China RoHS	Environmentally Friendly Use Period = 50 years
	For information on hazardous substances, refer to the manufacturer's declaration available under "Downloads"

UTTB 4-TG P/P - Disconnect terminal block

3044801

<https://www.phoenixcontact.com/us/products/3044801>

Accessories

 Note: Applying some accessories below might limit this product.


FBS 2-6 - Plug-in bridge

3030336

<https://www.phoenixcontact.com/us/products/3030336>



Plug-in bridge, pitch: 6.2 mm, number of positions: 2, color: red

 Max. current carrying capacity: 30 A

FBS 3-6 - Plug-in bridge

3030242

<https://www.phoenixcontact.com/us/products/3030242>



Plug-in bridge, pitch: 6.2 mm, number of positions: 3, color: red

 Max. current carrying capacity: 30 A

UTTB 4-TG P/P - Disconnect terminal block

3044801

<https://www.phoenixcontact.com/us/products/3044801>



FBS 4-6 - Plug-in bridge

3030255

<https://www.phoenixcontact.com/us/products/3030255>



Plug-in bridge, pitch: 6.2 mm, number of positions: 4, color: red

 Max. current carrying capacity: 30 A


FBS 5-6 - Plug-in bridge

3030349

<https://www.phoenixcontact.com/us/products/3030349>



Plug-in bridge, pitch: 6.2 mm, number of positions: 5, color: red

 Max. current carrying capacity: 30 A

UTTB 4-TG P/P - Disconnect terminal block

3044801

<https://www.phoenixcontact.com/us/products/3044801>



FBS 6-6 - Plug-in bridge

1008238

<https://www.phoenixcontact.com/us/products/1008238>



Plug-in bridge, One side not fully isolated, pitch: 6.2 mm, number of positions: 6, color: red

 Max. current carrying capacity: 30 A


FBS 10-6 - Plug-in bridge

3030271

<https://www.phoenixcontact.com/us/products/3030271>



Plug-in bridge, pitch: 6.2 mm, number of positions: 10, color: red

 Max. current carrying capacity: 30 A

UTT 4-TG P/P - Disconnect terminal block

3044801

<https://www.phoenixcontact.com/us/products/3044801>




FBS 20-6 - Plug-in bridge

3030365

<https://www.phoenixcontact.com/us/products/3030365>



Plug-in bridge, pitch: 6.2 mm, number of positions: 20, color: red

 Max. current carrying capacity: 30 A


FBS 50-6 - Plug-in bridge

3032224

<https://www.phoenixcontact.com/us/products/3032224>



Plug-in bridge, pitch: 6.2 mm, number of positions: 50, color: red

 Max. current carrying capacity: 30 A

UTT 4-TG P/P - Disconnect terminal block

3044801

<https://www.phoenixcontact.com/us/products/3044801>



FBSR 2-6 - Plug-in bridge

3033715

<https://www.phoenixcontact.com/us/products/3033715>



Plug-in bridge, pitch: 6.2 mm, number of positions: 2, color: red

 Max. current carrying capacity: 24 A

FBSR 3-6 - Plug-in bridge

3001594

<https://www.phoenixcontact.com/us/products/3001594>



Plug-in bridge, pitch: 6.2 mm, number of positions: 3, color: red

 Max. current carrying capacity: 24 A

UTT 4-TG P/P - Disconnect terminal block

3044801

<https://www.phoenixcontact.com/us/products/3044801>




FBSR 4-6 - Plug-in bridge

3001595

<https://www.phoenixcontact.com/us/products/3001595>



Plug-in bridge, pitch: 6.2 mm, number of positions: 4, color: red

 Max. current carrying capacity: 24 A


FBSR 5-6 - Plug-in bridge

3001596

<https://www.phoenixcontact.com/us/products/3001596>



Plug-in bridge, pitch: 6.2 mm, number of positions: 5, color: red

 Max. current carrying capacity: 24 A

UTTB 4-TG P/P - Disconnect terminal block

3044801

<https://www.phoenixcontact.com/us/products/3044801>


FBSR 10-6 - Plug-in bridge

3033716

<https://www.phoenixcontact.com/us/products/3033716>



Plug-in bridge, pitch: 6.2 mm, number of positions: 10, color: red

 Max. current carrying capacity: 24 A


FBSRH 2-6 - Short-circuit connector

3033812

<https://www.phoenixcontact.com/us/products/3033812>



Short-circuit connector, pitch: 6.2 mm, number of positions: 2, color: red

 Max. current carrying capacity: 24 A

UTTB 4-TG P/P - Disconnect terminal block

3044801

<https://www.phoenixcontact.com/us/products/3044801>




FBS 2-6 BU - Plug-in bridge

3036932

<https://www.phoenixcontact.com/us/products/3036932>



Plug-in bridge, pitch: 6.2 mm, number of positions: 2, color: blue

 Max. current carrying capacity: 30 A

FBS 3-6 BU - Plug-in bridge

3036945

<https://www.phoenixcontact.com/us/products/3036945>



Plug-in bridge, pitch: 6.2 mm, number of positions: 3, color: blue

 Max. current carrying capacity: 30 A

UTTB 4-TG P/P - Disconnect terminal block

3044801

<https://www.phoenixcontact.com/us/products/3044801>



FBS 4-6 BU - Plug-in bridge

3036958

<https://www.phoenixcontact.com/us/products/3036958>



Plug-in bridge, pitch: 6.2 mm, number of positions: 4, color: blue

 Max. current carrying capacity: 30 A

FBS 5-6 BU - Plug-in bridge

3036961

<https://www.phoenixcontact.com/us/products/3036961>



Plug-in bridge, pitch: 6.2 mm, number of positions: 5, color: blue

 Max. current carrying capacity: 30 A

UTT 4-TG P/P - Disconnect terminal block

3044801

<https://www.phoenixcontact.com/us/products/3044801>




FBS 10-6 BU - Plug-in bridge

3032198

<https://www.phoenixcontact.com/us/products/3032198>

Plug-in bridge, pitch: 6.2 mm, number of positions: 10, color: blue



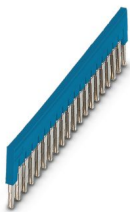
 Max. current carrying capacity: 30 A


FBS 20-6 BU - Plug-in bridge

3032208

<https://www.phoenixcontact.com/us/products/3032208>

Plug-in bridge, pitch: 6.2 mm, number of positions: 20, color: blue



 Max. current carrying capacity: 30 A

UTTB 4-TG P/P - Disconnect terminal block

3044801

<https://www.phoenixcontact.com/us/products/3044801>



FBS 50-6 BU - Plug-in bridge

3032211

<https://www.phoenixcontact.com/us/products/3032211>



Plug-in bridge, pitch: 6.2 mm, number of positions: 50, color: blue

 Max. current carrying capacity: 30 A

D-UTTB 2,5/4 - End cover

3047293

<https://www.phoenixcontact.com/us/products/3047293>



End cover, depth: 57.5 mm, width: 2.2 mm, height: 69.9 mm, color: gray

UTT 4-TG P/P - Disconnect terminal block



3044801

<https://www.phoenixcontact.com/us/products/3044801>

DP-UTT 2,5/4 - Spacer plate

3047303

<https://www.phoenixcontact.com/us/products/3047303>

Spacer plate, depth: 33 mm, width: 2.6 mm, height: 69.9 mm, color: gray



ATP-UTT 2,5/4 - Partition plate

3047316

<https://www.phoenixcontact.com/us/products/3047316>

Partition plate, depth: 70 mm, width: 2.2 mm, height: 74.3 mm, color: gray



UTT 4-TG P/P - Disconnect terminal block

3044801

<https://www.phoenixcontact.com/us/products/3044801>



PS-6/2,3MM RD - Test plug

3038736

<https://www.phoenixcontact.com/us/products/3038736>

Test plug, number of positions: 1, color: red



WS UT 4 - Warning label

3047332

<https://www.phoenixcontact.com/us/products/3047332>

Warning sign for UT terminal blocks



UTT 4-TG P/P - Disconnect terminal block



3044801

<https://www.phoenixcontact.com/us/products/3044801>

P-DI - Isolating plugs

3036783

<https://www.phoenixcontact.com/us/products/3036783>



Isolating plugs, depth: 23.1 mm, width: 3.5 mm, height: 10.8 mm, color: orange

P-DI GY - Isolating plugs

3047390

<https://www.phoenixcontact.com/us/products/3047390>



Isolating plugs, depth: 23.1 mm, width: 3.5 mm, height: 10.8 mm, color: gray

UTT 4-TG P/P - Disconnect terminal block



3044801

<https://www.phoenixcontact.com/us/products/3044801>

P-DI GN - Isolating plugs

1071062

<https://www.phoenixcontact.com/us/products/1071062>



Isolating plugs, depth: 23.1 mm, width: 3.5 mm, height: 10.8 mm, color: green

LPS-6/E - Service connector

3270540

<https://www.phoenixcontact.com/us/products/3270540>



Service connector, nom. voltage: 800 V, nominal current: 24 A, number of positions: 1, connection method: Push-in connection, Rated cross section: 2.5 mm², cross section: 0.14 mm²- 4 mm², color: red

UTTB 4-TG P/P - Disconnect terminal block



3044801

<https://www.phoenixcontact.com/us/products/3044801>

LPS-6 - Service connector

3270541

<https://www.phoenixcontact.com/us/products/3270541>



Service connector, nom. voltage: 800 V, nominal current: 24 A, number of positions: 1, connection method: Push-in connection, Rated cross section: 2.5 mm², cross section: 0.14 mm²- 4 mm², color: red

LPO 4/E - Pick-up plug

3270519

<https://www.phoenixcontact.com/us/products/3270519>



Pick-up plug, nom. voltage: 800 V, nominal current: 24 A, number of positions: 1, connection method: Push-in connection, Rated cross section: 2.5 mm², cross section: 0.14 mm²- 4 mm², color: gray

UTT 4-TG P/P - Disconnect terminal block



3044801

<https://www.phoenixcontact.com/us/products/3044801>

LPO 4 - Pick-up plug

3270522

<https://www.phoenixcontact.com/us/products/3270522>



Pick-up plug, nom. voltage: 800 V, nominal current: 24 A, number of positions: 1, connection method: Push-in connection, Rated cross section: 2.5 mm², cross section: 0.14 mm²- 4 mm², color: gray

NS 35/ 7,5 PERF 2000MM - DIN rail perforated

0801733

<https://www.phoenixcontact.com/us/products/0801733>



DIN rail perforated, Pack of 25 (50 m), acc. to EN 60715, material: Steel, galvanized, passivated with a thick layer, Standard profile, color: silver

UTT 4-TG P/P - Disconnect terminal block

3044801

<https://www.phoenixcontact.com/us/products/3044801>



NS 35/ 7,5 UNPERF 2000MM - DIN rail, unperforated

0801681

<https://www.phoenixcontact.com/us/products/0801681>



DIN rail, unperforated, Pack of 25 (50 m), acc. to EN 60715, material: Steel, galvanized, passivated with a thick layer, Standard profile, color: silver

NS 35/ 7,5 WH PERF 2000MM - DIN rail perforated

1204119

<https://www.phoenixcontact.com/us/products/1204119>



DIN rail perforated, Pack of 25 (50 m), acc. to EN 60715, material: Steel, Galvanized, white passivated, Standard profile, color: silver

UTT 4-TG P/P - Disconnect terminal block

3044801

<https://www.phoenixcontact.com/us/products/3044801>



NS 35/ 7,5 WH UNPERF 2000MM-VPE 10 - DIN rail, unperforated

1204122

<https://www.phoenixcontact.com/us/products/1204122>



DIN rail, unperforated, Pack of 10 (20 m), acc. to EN 60715, material: Steel, Galvanized, white passivated, Standard profile, color: silver

NS 35/ 7,5 AL UNPERF 2000MM - DIN rail, unperforated

0801704

<https://www.phoenixcontact.com/us/products/0801704>



DIN rail, unperforated, Pack of 25 (50 m), acc. to EN 60715, material: Aluminum, uncoated, Standard profile, color: silver

UTT 4-TG P/P - Disconnect terminal block

3044801

<https://www.phoenixcontact.com/us/products/3044801>



NS 35/ 7,5 ZN PERF 2000MM - DIN rail perforated

1206421

<https://www.phoenixcontact.com/us/products/1206421>



DIN rail perforated, Pack of 25 (50 m), acc. to EN 60715, material: Steel, galvanized, Standard profile, color: silver

NS 35/ 7,5 ZN UNPERF 2000MM - DIN rail, unperforated

1206434

<https://www.phoenixcontact.com/us/products/1206434>



DIN rail, unperforated, Pack of 25 (50 m), acc. to EN 60715, material: Steel, galvanized, Standard profile, color: silver

UTT 4-TG P/P - Disconnect terminal block

3044801

<https://www.phoenixcontact.com/us/products/3044801>



NS 35/ 7,5 CU UNPERF 2000MM-VPE 10 - DIN rail, unperforated

0801762

<https://www.phoenixcontact.com/us/products/0801762>



DIN rail, unperforated, Pack of 10 (20 m), acc. to EN 60715, material: Copper, uncoated, Standard profile, color: copper-colored

NS 35/ 7,5 CAP - End cap

1206560

<https://www.phoenixcontact.com/us/products/1206560>

DIN rail end piece, for DIN rail NS 35/7.5



UTT 4-TG P/P - Disconnect terminal block



3044801

<https://www.phoenixcontact.com/us/products/3044801>

NS 35/15 PERF 2000MM - DIN rail perforated

1201730

<https://www.phoenixcontact.com/us/products/1201730>



DIN rail perforated, Pack of 25 (50 m), similar to EN 60715, material: Steel, galvanized, passivated with a thick layer, Standard profile, color: silver

NS 35/15 UNPERF 2000MM - DIN rail, unperforated

1201714

<https://www.phoenixcontact.com/us/products/1201714>



DIN rail, unperforated, Pack of 25 (50 m), similar to EN 60715, material: Steel, galvanized, passivated with a thick layer, Standard profile, color: silver

UTT 4-TG P/P - Disconnect terminal block

3044801

<https://www.phoenixcontact.com/us/products/3044801>



NS 35/15 WH PERF 2000MM - DIN rail perforated

0806602

<https://www.phoenixcontact.com/us/products/0806602>



DIN rail perforated, Pack of 25 (50 m), similar to EN 60715, material: Steel, Galvanized, white passivated, Standard profile, color: white

NS 35/15 WH UNPERF 2000MM-VPE 10 - DIN rail, unperforated

1204135

<https://www.phoenixcontact.com/us/products/1204135>



DIN rail, unperforated, Pack of 10 (20 m), similar to EN 60715, material: Steel, Galvanized, white passivated, Standard profile, color: silver

UTT 4-TG P/P - Disconnect terminal block

3044801

<https://www.phoenixcontact.com/us/products/3044801>



NS 35/15 AL UNPERF 2000MM - DIN rail, unperforated

1201756

<https://www.phoenixcontact.com/us/products/1201756>



DIN rail, unperforated, similar to EN 60715, material: Aluminum, uncoated, Standard profile, color: silver

NS 35/15 ZN PERF 2000MM - DIN rail perforated

1206599

<https://www.phoenixcontact.com/us/products/1206599>



DIN rail perforated, Pack of 25 (50 m), similar to EN 60715, material: Steel, galvanized, Standard profile, color: silver

UTT 4-TG P/P - Disconnect terminal block

3044801

<https://www.phoenixcontact.com/us/products/3044801>



NS 35/15 ZN UNPERF 2000MM - DIN rail, unperforated

1206586

<https://www.phoenixcontact.com/us/products/1206586>



DIN rail, unperforated, Pack of 25 (50 m), similar to EN 60715, material: Steel, galvanized, Standard profile, color: silver

NS 35/15 CU UNPERF 2000MM-VPE 10 - DIN rail, unperforated

1201895

<https://www.phoenixcontact.com/us/products/1201895>



DIN rail, unperforated, Pack of 10 (20 m), similar to EN 60715, material: Copper, uncoated, Standard profile, color: copper-colored

UTT 4-TG P/P - Disconnect terminal block

3044801

<https://www.phoenixcontact.com/us/products/3044801>



NS 35/15 CAP - End cap

1206573

<https://www.phoenixcontact.com/us/products/1206573>

DIN rail end piece, for DIN rail NS 35/15



NS 35/15-2,3 UNPERF 2000MM-VPE 10 - DIN rail, unperforated

1201798

<https://www.phoenixcontact.com/us/products/1201798>



DIN rail, unperforated, Pack of 10 (20 m), acc. to EN 60715, material: Steel, galvanized, passivated with a thick layer, Standard profile 2.3 mm, color: silver

UTT 4-TG P/P - Disconnect terminal block



3044801

<https://www.phoenixcontact.com/us/products/3044801>

ZB 6:UNBEDRUCKT - Zack marker strip

1051003

<https://www.phoenixcontact.com/us/products/1051003>



Zack marker strip, Strip, white, unlabeled, can be labeled with: PLOTMARK, CMS-P1-PLOTTER, mounting type: snapped, for terminal block width: 6.2 mm, lettering field size: 6.15 x 10.5 mm, Number of individual labels: 10

ZB 6 CUS - Zack marker strip

0824992

<https://www.phoenixcontact.com/us/products/0824992>



Zack marker strip, can be ordered: Strip, white, labeled according to customer specifications, mounting type: snap into tall marker groove, for terminal block width: 6.2 mm, lettering field size: 6.15 x 10.5 mm, Number of individual labels: 10

UTTB 4-TG P/P - Disconnect terminal block



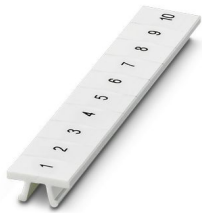
3044801

<https://www.phoenixcontact.com/us/products/3044801>

ZB 6,LGS:FORTL.ZAHLEN - Zack marker strip

1051016

<https://www.phoenixcontact.com/us/products/1051016>

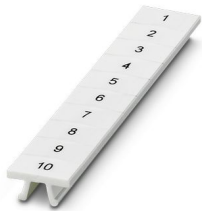


Zack marker strip, Strip, white, labeled, can be labeled with: CMS-P1-PLOTTER, printed horizontally: consecutive numbers 1 ... 10, 11 ... 20, etc. up to 491 ... 500, mounting type: snapped, for terminal block width: 6.2 mm, lettering field size: 6. 15 x 10.5 mm, Number of individual labels: 10

ZB 6,QR:FORTL.ZAHLEN - Zack marker strip

1051029

<https://www.phoenixcontact.com/us/products/1051029>



Zack marker strip, Strip, white, labeled, can be labeled with: CMS-P1-PLOTTER, Printed vertically: consecutive numbers 1 ... 10, 11 ... 20, etc. up to 491 ... 500, mounting type: snapped, for terminal block width: 6.2 mm, lettering field size: 6. 15 x 10.5 mm, Number of individual labels: 10

UTT 4-TG P/P - Disconnect terminal block



3044801

<https://www.phoenixcontact.com/us/products/3044801>

ZB 6,LGS:GLEICHE ZAHLEN - Zack marker strip

1051032

<https://www.phoenixcontact.com/us/products/1051032>



Zack marker strip, Strip, white, labeled, can be labeled with: CMS-P1-PLOTTER, printed horizontally: Identical numbers 1 or 2, etc. up to 100, mounting type: snapped, for terminal block width: 6.2 mm, lettering field size: 6.15 x 10.5 mm, Number of individual labels: 10

ZB 6,LGS:L1-N,PE - Marker for terminal blocks

1051414

<https://www.phoenixcontact.com/us/products/1051414>



Marker for terminal blocks, Strip, white, labeled, can be labeled with: CMS-P1-PLOTTER, horizontal: L1, L2, L3, N, PE, L1, L2, L3, N, PE, mounting type: snapped, for terminal block width: 6.2 mm, lettering field size: 6.15 x 10.5 mm, Number of individual labels: 10

UTT 4-TG P/P - Disconnect terminal block



3044801

<https://www.phoenixcontact.com/us/products/3044801>

ZB 6,LGS:U-N - Marker for terminal blocks

1051430

<https://www.phoenixcontact.com/us/products/1051430>



Marker for terminal blocks, Strip, white, labeled, can be labeled with: CMS-P1-PLOTTER, printed horizontally: U, V, W, N, GND, U, V, W, N, GND, mounting type: snapped, for terminal block width: 6.2 mm, lettering field size: 6.15 x 10.5 mm, Number of individual labels: 10

UC-TM 6 - Marker for terminal blocks

0818085

<https://www.phoenixcontact.com/us/products/0818085>



Marker for terminal blocks, Sheet, white, unlabeled, can be labeled with: BLUEMARK ID COLOR, BLUEMARK ID, BLUEMARK CLED, PLOTMARK, CMS-P1-PLOTTER, mounting type: snapped, for terminal block width: 6.2 mm, lettering field size: 5.6 x 10.5 mm, Number of individual labels: 80

UTT 4-TG P/P - Disconnect terminal block

3044801

<https://www.phoenixcontact.com/us/products/3044801>



UC-TM 6 CUS - Marker for terminal blocks

0824589

<https://www.phoenixcontact.com/us/products/0824589>



Marker for terminal blocks, can be ordered: by sheet, white, labeled according to customer specifications, mounting type: snap into tall marker groove, for terminal block width: 6.2 mm, lettering field size: 5.6 x 10.5 mm, Number of individual labels: 80

UCT-TM 6 - Marker for terminal blocks

0828736

<https://www.phoenixcontact.com/us/products/0828736>



Marker for terminal blocks, Sheet, white, unlabeled, can be labeled with: TOPMARK NEO, TOPMARK LASER, BLUEMARK ID COLOR, BLUEMARK ID, BLUEMARK CLED, THERMOMARK PRIME, THERMOMARK CARD 2.0, THERMOMARK CARD, mounting type: snapped, for terminal block width: 6.2 mm, lettering field size: 5.6 x 10.5 mm, Number of individual labels: 60

UTT 4-TG P/P - Disconnect terminal block

3044801

<https://www.phoenixcontact.com/us/products/3044801>



UCT-TM 6 CUS - Marker for terminal blocks

0829602

<https://www.phoenixcontact.com/us/products/0829602>



Marker for terminal blocks, can be ordered: by sheet, white, labeled according to customer specifications, mounting type: snap into tall marker groove, for terminal block width: 6.2 mm, lettering field size: 5.6 x 10.5 mm, Number of individual labels: 60

MPS-MT - Test plug

0201744

<https://www.phoenixcontact.com/us/products/0201744>



Test plug, with solder connection up to 1 mm² conductor cross section, number of positions: 1, color: gray

UTTB 4-TG P/P - Disconnect terminal block

3044801

<https://www.phoenixcontact.com/us/products/3044801>



MPS-IH WH - Insulating sleeve

0201663

<https://www.phoenixcontact.com/us/products/0201663>

Insulating sleeve, color: white



MPS-IH RD - Insulating sleeve

0201676

<https://www.phoenixcontact.com/us/products/0201676>

Insulating sleeve, color: red



UTT 4-TG P/P - Disconnect terminal block

3044801

<https://www.phoenixcontact.com/us/products/3044801>

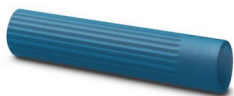


MPS-IH BU - Insulating sleeve

0201689

<https://www.phoenixcontact.com/us/products/0201689>

Insulating sleeve, color: blue



MPS-IH YE - Insulating sleeve

0201692

<https://www.phoenixcontact.com/us/products/0201692>

Insulating sleeve, color: yellow



UTTB 4-TG P/P - Disconnect terminal block

3044801

<https://www.phoenixcontact.com/us/products/3044801>



MPS-IH GN - Insulating sleeve

0201702

<https://www.phoenixcontact.com/us/products/0201702>

Insulating sleeve, color: green



MPS-IH GY - Insulating sleeve

0201728

<https://www.phoenixcontact.com/us/products/0201728>

Insulating sleeve, color: gray



UTT 4-TG P/P - Disconnect terminal block

3044801

<https://www.phoenixcontact.com/us/products/3044801>



MPS-IH BK - Insulating sleeve

0201731

<https://www.phoenixcontact.com/us/products/0201731>

Insulating sleeve, color: black



PAI-4-FIX-5/6 BU - Test adapter

3035975

<https://www.phoenixcontact.com/us/products/3035975>

4 mm test adapter, for terminal blocks with 5.2 mm and 6.2 mm pitch



UTT 4-TG P/P - Disconnect terminal block



3044801

<https://www.phoenixcontact.com/us/products/3044801>

PAI-4-FIX-5/6 OG - Test adapter

3035974

<https://www.phoenixcontact.com/us/products/3035974>



4 mm test adapter, for terminal blocks with 5.2 mm and 6.2 mm pitch

PAI-4-FIX-5/6 YE - Test adapter

3035977

<https://www.phoenixcontact.com/us/products/3035977>



4 mm test adapter, for terminal blocks with 5.2 mm and 6.2 mm pitch

UTT 4-TG P/P - Disconnect terminal block



3044801

<https://www.phoenixcontact.com/us/products/3044801>

PAI-4-FIX-5/6 RD - Test adapter

3035976

<https://www.phoenixcontact.com/us/products/3035976>



4 mm test adapter, for terminal blocks with 5.2 mm and 6.2 mm pitch

PAI-4-FIX-5/6 GN - Test adapter

3035978

<https://www.phoenixcontact.com/us/products/3035978>



4 mm test adapter, for terminal blocks with 5.2 mm and 6.2 mm pitch

UTT 4-TG P/P - Disconnect terminal block



3044801

<https://www.phoenixcontact.com/us/products/3044801>

PAI-4-FIX-5/6 BK - Test adapter

3035980

<https://www.phoenixcontact.com/us/products/3035980>



4 mm test adapter, for terminal blocks with 5.2 mm and 6.2 mm pitch

PAI-4-FIX-5/6 GY - Test adapter

3035982

<https://www.phoenixcontact.com/us/products/3035982>



4 mm test adapter, for terminal blocks with 5.2 mm and 6.2 mm pitch

UTT 4-TG P/P - Disconnect terminal block



3044801

<https://www.phoenixcontact.com/us/products/3044801>

PAI-4-FIX-5/6 VT - Test adapter

3035979

<https://www.phoenixcontact.com/us/products/3035979>



4 mm test adapter, for terminal blocks with 5.2 mm and 6.2 mm pitch

PAI-4-FIX-5/6 BN - Test adapter

3035981

<https://www.phoenixcontact.com/us/products/3035981>



4 mm test adapter, for terminal blocks with 5.2 mm and 6.2 mm pitch

UTT 4-TG P/P - Disconnect terminal block

3044801

<https://www.phoenixcontact.com/us/products/3044801>



PAI-4-FIX-5/6 WH - Test adapter

3035983

<https://www.phoenixcontact.com/us/products/3035983>



4 mm test adapter, for terminal blocks with 5.2 mm and 6.2 mm pitch

PS-6 - Test plug

3030996

<https://www.phoenixcontact.com/us/products/3030996>



Test plug, Modular test plug, number of positions: 1, color: red

UTT 4-TG P/P - Disconnect terminal block



3044801

<https://www.phoenixcontact.com/us/products/3044801>

CLIPFIX 35 - End bracket

3022218

<https://www.phoenixcontact.com/us/products/3022218>



Quick mounting end clamp for NS 35/7,5 DIN rail or NS 35/15 DIN rail, with marking option, width: 9.5 mm, color: gray

CLIPFIX 35-5 - End bracket

3022276

<https://www.phoenixcontact.com/us/products/3022276>



Quick mounting end clamp for NS 35/7,5 DIN rail or NS 35/15 DIN rail, with marking option, with parking option for FBS...5, FBS...6, KSS 5, KSS 6, width: 5.15 mm, color: gray

UTT 4-TG P/P - Disconnect terminal block



3044801

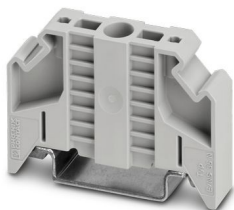
<https://www.phoenixcontact.com/us/products/3044801>

E/NS 35 N - End bracket

0800886

<https://www.phoenixcontact.com/us/products/0800886>

End clamp, width: 9.5 mm, color: gray



P-DI - Isolating plugs

3036783

<https://www.phoenixcontact.com/us/products/3036783>

Isolating plugs, depth: 23.1 mm, width: 3.5 mm, height: 10.8 mm, color: orange



UTTB 4-TG P/P - Disconnect terminal block



3044801

<https://www.phoenixcontact.com/us/products/3044801>

P-FIX - Feed-through connector

3038956

<https://www.phoenixcontact.com/us/products/3038956>



Feed-through connector, width: 4 mm, height: 10.5 mm, color: gray

P-CO - Component connector

3036796

<https://www.phoenixcontact.com/us/products/3036796>



Component connector, for installing components that can be individually selected, nom. voltage: 250 V, nominal current: 6 A, connection method: Plug-in connection, pitch: 5.2 mm, depth: 33.2 mm, width: 5.1 mm, height: 24.2 mm, number of positions: 1, color: gray, mounting type: Pluggable (slot)

UTTBT 4-TG P/P - Disconnect terminal block



3044801

<https://www.phoenixcontact.com/us/products/3044801>

P-CO 1N4007/R-L - Component connector

3032457

<https://www.phoenixcontact.com/us/products/3032457>



Component connector, with diode1N4007, depth: 33.3 mm, width: 5.2 mm, height: 24.2 mm, number of positions: 1, color: gray, mounting type: Plug-in mounting

P-CO 1N4007/L-R - Component connector

3032460

<https://www.phoenixcontact.com/us/products/3032460>



Component connector, with diode1N4007, depth: 33.3 mm, width: 5.2 mm, height: 24.2 mm, number of positions: 1, color: gray, mounting type: Plug-in mounting

UTTB 4-TG P/P - Disconnect terminal block



3044801

<https://www.phoenixcontact.com/us/products/3044801>

P-FU 5X20 LED 24 - Fuse plug

3036819

<https://www.phoenixcontact.com/us/products/3036819>



Fuse plug, Prior to replacing the cartridge fuse, disconnect the fuse connector from the basic terminal block., nom. voltage: 24 V, nominal current: 6.3 A, fuse type: G / 5 x 20, mounting type: Plug-in mounting, color: black

P-FU 5X20 LED 60 - Fuse plug

3036822

<https://www.phoenixcontact.com/us/products/3036822>



Fuse plug, Prior to replacing the cartridge fuse, disconnect the fuse connector from the basic terminal block., nom. voltage: 500 V, nominal current: 6.3 A, fuse type: G / 5 x 20, mounting type: Plug-in mounting, color: black

UTT 4-TG P/P - Disconnect terminal block



3044801

<https://www.phoenixcontact.com/us/products/3044801>

P-FU 5X20 LA 250 - Fuse plug

3036835

<https://www.phoenixcontact.com/us/products/3036835>



Fuse plug, Prior to replacing the cartridge fuse, disconnect the fuse connector from the basic terminal block., nom. voltage: 500 V, nominal current: 6.3 A, fuse type: G / 5 x 20, mounting type: Plug-in mounting, color: black

SF-SL 0,6X3,5-100 S-VDE - Screwdriver

1212587

<https://www.phoenixcontact.com/us/products/1212587>



Actuation tool, for ST terminal blocks, VDE insulated, with slimmer insulation integrated in the blade, also suitable for use as a bladed screwdriver, size: 0.6 x 3.5 x 100 mm, 2-component grip, with non-slip grip

UTTB 4-TG P/P - Disconnect terminal block

3044801

<https://www.phoenixcontact.com/us/products/3044801>



X-PEN 0,35 - Marker pen

0811228

<https://www.phoenixcontact.com/us/products/0811228>



Marker pen without ink cartridge, for manual labeling of markers, labeling extremely wipe-proof, line thickness 0.35 mm

Phoenix Contact 2024 © - all rights reserved

<https://www.phoenixcontact.com>

Phoenix Contact USA
586 Fulling Mill Road
Middletown, PA 17057, United States
(+717) 944-1300
info@phoenixcon.com