

TEST & MEASUREMENT

TERMINAL BLOCKS & STRIPS

ENCLOSURES

POWER

AUTOMATION & CONTROL

OPTOELECTRONICS

PASSIVE & ACTIVE

ASSEMBLY

INDEX

CLIPLINE Complete from Phoenix Contact is a unique and comprehensive solution of modular terminal blocks, offering choices in connection technologies (screw, spring cage, insulation displacement, and ring lug) and functionality enhanced by a uniform range of accessories. Designed to meet a variety of applications within every major industry, CLIPLINE Complete products use standardized bridging, marking and testing accessories, which increases reliability but reduces logistics costs. CLIP Project Advanced engineering software — one software platform that drives all printers — ties it all together, enabling users to build complete rail assemblies and BOMs online for fast and easy export. CLIPLINE Complete solutions deliver a high degree of flexibility and simplify project planning and configuration of the control cabinet.

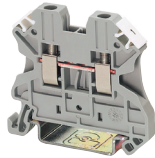
UT Universal Terminal Blocks Screw Connection



Universal for every application. The screw connection system is known and accepted throughout the world and can be used in any application.

- ▶ Universal Screw Connection Technology
- ▶ Non-Corrosive Nickel-Plated Copper Alloy Parts
- ▶ Maintenance-Free Operation
- ▶ UL Approvals for Multiple Conductor Connections

2-Conductor Modular Terminal Blocks



Stock No.	Mfr.'s Type	Phoenix No.	Color	EACH		
				1-24	25-49	50-99
809-0682	3044076	UT 2.5	Gray	.97	.93	.90
809-0683	3044089	UT 2.5 BU	Blue	.97	.93	.90
809-1395	3045046	UT 2.5 OG	Orange	.97	.93	.90
809-1396	3045062	UT 2.5 RD	Red	.97	.93	.90
809-1397	3045088	UT 2.5 BK	Black	.97	.93	.90
809-0684	3044102	UT 4	Gray	.90	.80	.72
809-0685	3044115	UT 4 BU	Blue	1.05	.99	.94
809-1398	3045101	UT 4 OG	Orange	1.05	.99	.94
809-0856	3045127	UT 4 RD	Red	1.27	1.16	1.05
809-1399	3045143	UT 4 BK	Black	1.05	.99	.94
809-0645	3044131	UT 6	Gray	1.39	1.29	1.23
809-0686	3044144	UT 6 BU	Blue	1.39	1.29	1.23
809-1400	3045169	UT 6 OG	Orange	1.41	1.29	1.23
809-1401	3045185	UT 6 RD	Red	1.41	1.29	1.23
809-1402	3045208	UT 6 BK	Black	1.41	1.29	1.23
809-0687	3044160	UT 10	Gray	1.88	1.73	1.59
809-0688	3044188	UT 10 BU	Blue	1.82	1.73	1.60
809-1363	3044199	UT 16	Gray	2.21	2.10	1.94
809-1403	3044209	UT 16 BU	Blue	2.21	2.10	1.94
809-1404	3044225	UT 35	Gray	4.75	4.51	4.16
809-1405	3044238	UT 35 BU	Blue	4.75	4.51	4.16

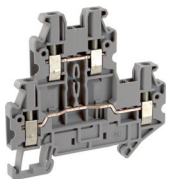
Ground Terminal Blocks



Stock No.	Mfr.'s Type	Phoenix No.	Color	EACH		
				1-24	25-49	50-99
809-0689	3044092	UT 2.5-PE	Y/G†	3.53	3.13	2.89
809-0690	3044128	UT 4-PE	Y/G†	3.91	3.49	3.31
809-0691	3044157	UT 6-PE	Y/G†	4.45	3.96	3.75
809-0692	3044131	UT 10-PE	Y/G†	4.94	4.37	4.17
809-1406	3044212	UT 16-PE	Y/G†	5.18	4.93	4.55
809-1407	3044241	UT 35-PE	Y/G†	7.39	7.02	6.48

†Y/G = Yellow/Green color.

Multi-Conductor Terminal Blocks



Stock No.	Mfr.'s Type	Phoenix No.	Color	EACH		
				1-24	25-49	50-99
809-1408	3044513	UT 2.5-TWIN	Gray	1.65	1.57	1.45
809-1409	3044526	UT 2.5-TWIN BU	Blue	1.65	1.57	1.45
809-1410	3044542	UT 2.5-QUATTRO	Gray	1.90	1.80	1.67
809-1411	3044555	UT 2.5-QUATTRO BU	Blue	1.90	1.80	1.67
809-1084	3044636	UTTB 2.5	Gray	2.61	2.54	2.39
809-1412	3044649	UTTB 2.5 BU	Blue	2.61	2.54	2.39
809-0929	3044364	UT 4-TWIN	Gray	1.70	1.61	1.49
809-1413	3044500	UT 4-TWIN BU	Blue	1.70	1.61	1.49
809-1242	3044571	UT 4-QUATTRO	Gray	2.00	1.90	1.74
809-1414	3044584	UT 4-QUATTRO BU	Blue	1.99	1.89	1.74
809-1027	3044814	UTTB 4	Gray	2.60	2.45	2.26
809-1028	3044791	UTTB 4 BU	Blue	2.60	2.45	2.26
809-1415	3044678	UTTB 2.5 -PE/L	Gray	4.44	4.22	3.89
809-1416	3046731	UTTB 2.5 -PE/N	Gray	4.44	4.22	3.89
809-1417	3044681	UTTB 2.5 -L/N	Gray	2.75	2.61	2.41

Multi-Conductor Ground Terminal Blocks



Stock No.	Mfr.'s Type	Phoenix No.	Color	EACH		
				1-24	25-49	50-99
809-1418	3044539	UT 2.5-TWIN-PE	Y/G†	4.07	3.87	3.57
809-1419	3044568	UT 2.5-QUATTRO-PE	Y/G†	5.39	5.12	4.73
809-1026	3044665	UTTB 2.5-PE	Y/G†	6.17	5.92	5.48
809-1420	3044380	UT 4-TWIN-PE	Y/G†	5.01	4.76	4.39
809-1421	3044597	UT 4-QUATTRO-PE	Y/G†	5.63	5.35	4.94
809-1304	3044759	UTTB 4-PE	Y/G†	7.49	7.11	6.57

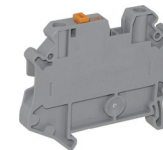
†Y/G = Yellow/Green color.

UT Fuse Terminal Blocks



Stock No.	Mfr.'s Type	Phoenix No.	Color	EACH		
				1-9	10-24	25-49
809-0700	3046032	UT 4-HESI(5X20)	Black	5.01	4.76	4.39
809-0701	3046090	UT 4-HESILED 24(5X20)	Black	8.09	7.78	7.10
809-1423	3046126	UT 4-HESILED 60(5X20)	Black	8.09	7.69	7.10
809-0702	3046100	UT 4-HESILA 250(5X20)	Black	8.30	7.89	7.28
809-1021	3046249	UT 4-HEDI	Black	4.83	4.63	4.28
809-1422	3046252	UT 4-HEDI-P/P	Black	5.08	4.82	4.45
809-1022	3046401	UT 6-HESI(6.3X32)	Black	6.52	6.19	5.71
809-1023	3046414	UT 6-HESI LED 24(6.3X32)	Black	11.92	11.32	10.45
809-1424	3046427	UT 6-HESILED 60(6.3X32)	Black	12.35	11.74	10.83
809-1235	3046430	UT 6-HESILA 250(6.3X32)	Black	12.00	11.32	10.46

UT Disconnect Terminal Blocks



Stock No.	Mfr.'s Type	Phoenix No.	Color	EACH		
				1-24	25-49	50-99
809-1425	3046362	UT 2.5-MT	Gray	3.27	3.10	2.87
809-1426	3046375	UT 2.5-MT-P/P	Gray	3.42	3.25	3.00
809-1427	3046388	UT 2.5-TG	Gray	2.29	2.18	2.01
809-1428	3046391	UT 2.5-TG-P/P	Gray	2.58	2.45	2.26
809-0693	3046139	UT 4-MT	Gray	2.80	2.50	2.34
809-0694	3046171	UT 4-MT-P/P	Gray	3.01	2.76	2.55
809-1429	3064043	UT 4-QUATTRO-MT	Gray	4.16	3.95	3.65
809-1430	3064056	UT 4-QUATTRO-MT-P/P	Gray	4.89	4.64	4.28
809-0695	3046142	UT 4-TG	Gray	2.28	2.08	1.95
809-0696	3046168	UT 4-TG-P/P	Gray	2.07	—	—
809-1431	3046595	UT 4-TWIN-TG	Gray	3.55	3.37	3.11
809-1432	3046605	UT 4-TWIN-TG-P/P	Gray	3.84	3.65	3.37
809-1433	3064027	UT 4-QUATTRO-TG	Gray	3.72	3.54	3.27
809-1434	3064069	UT 6-MT	Gray	3.23	3.07	2.83
809-1435	3046485	UT 6-TG	Gray	2.46	2.34	2.16

Accessories

End Covers

Stock No.	Mfr.'s Type	Phoenix No.	Color	EACH		
				1-24	25-49	50-99
809-0713	3047028	D-UT 2.5/10	Gray	.56	.48	.46
809-1364	3047206	D-UT 16	Gray	.58	—	—
809-0714	3047141	D-UT 2.5/4-TWIN	Gray	.51	.56	.50
809-1237	3047170	D-UT 2.5/4-QUATTRO	Gray	.80	.71	—
809-1025	3047293	D-UTTB 2.5/4	Gray	.86	.81	.75

Separating Plates

Stock No.	Mfr.'s Type	Phoenix No.	Color	EACH		
				1-24	25-49	50-99
809-0716	3047167	ATP-UT	Gray	.64	.58	.53
809-1436	3047183	ATP-UT-TWIN	Gray	.58	.53	.50
809-1437	3047196	ATP-UT-QUATTRO	Gray	.58	.53	.50
809-1291	3047316	ATP-UTTB 2.5/4	Gray	.86	.79	.74