

AI-TWIN 2X 0,75-10 GY - Ferrule



3200975

<https://www.phoenixcontact.com/ca/products/3200975>

Please be informed that the data shown in this PDF document is generated from our online catalog. Please find the complete data in the user documentation. Our general terms of use for downloads are valid.



Ferrule, sleeve length: 10 mm, color: gray

Your advantages

- These special ferrules allow chain bridges to be set up with ease
- The TWIN ferrules provide a practical way of crimping two conductors in one ferrule
- Different versions of the individual TWIN ferrules can be selected for specific applications

Commercial data

Item number	3200975
Packing unit	100 pc
Minimum order quantity	100 pc
Sales key	BH34
Product key	BH3413
Catalog page	Page 486 (C-3-2019)
GTIN	4017918094522
Weight per piece (including packing)	0.149 g
Weight per piece (excluding packing)	0.149 g
Customs tariff number	85369010
Country of origin	DE

AI-TWIN 2X 0,75-10 GY - Ferrule



3200975

<https://www.phoenixcontact.com/ca/products/3200975>

Technical data

Product properties

Product type	Cable end sleeve
Conductor category	stranded conductors, class 2, 5, 6 / B, C, K, M

Connection data

Conductor connection

Conductor cross section flexible max.	0.75 mm²
Conductor cross section AWG max.	18
Stripping length	14 mm

Dimensions

Dimensional drawing	
Sleeve length	10 mm
Maximum stripping length	14 mm
Ferrule diameter	1.7 mm
Sleeve wall thickness	0.15 mm
Insulating collar thickness	0.25 mm
Inner dimensions of the insulating collar	2.8 mm

Material specifications

Color	gray
Material	CU-DHP
Flammability rating according to UL 94	HB
Coating	tin-plated (galvanic)
Components	free from silicone and halogen

Mechanical properties

Technical data

Sleeve length	10 mm
---------------	-------

Environmental and real-life conditions

Ambient conditions

Permanent temperature	105 °C (-40 °C no load / 0 °C dynamic load)
Short-term temperature	120 °C

Standards and regulations

AI-TWIN 2X 0,75-10 GY - Ferrule



3200975

<https://www.phoenixcontact.com/ca/products/3200975>

Design according to standard	DIN 46228-4, UL 486F-F
------------------------------	------------------------

AI-TWIN 2X 0,75-10 GY - Ferrule

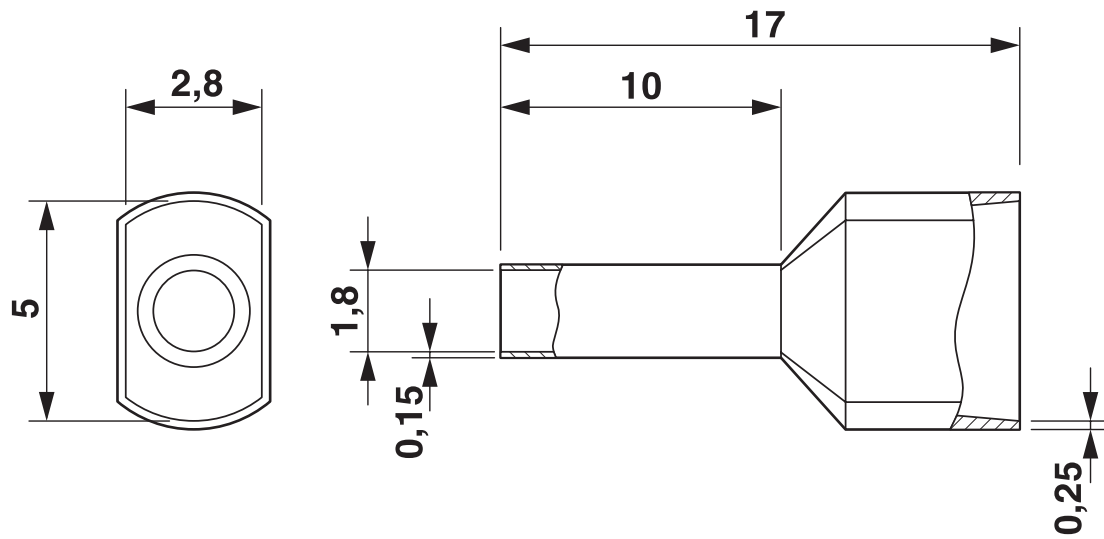


3200975

<https://www.phoenixcontact.com/ca/products/3200975>

Drawings

Dimensional drawing



AI-TWIN 2X 0,75-10 GY - Ferrule



3200975

<https://www.phoenixcontact.com/ca/products/3200975>

Approvals

To download certificates, visit the product detail page: <https://www.phoenixcontact.com/ca/products/3200975>



UL Listed
Approval ID: E488001



cUL Listed
Approval ID: E488001



cULus Listed
Approval ID: E488001

cULus Listed

AI-TWIN 2X 0,75-10 GY - Ferrule



3200975

<https://www.phoenixcontact.com/ca/products/3200975>

Classifications

ECLASS

ECLASS-11.0	27400201
ECLASS-13.0	27400201
ECLASS-12.0	27400201

ETIM

ETIM 9.0	EC000005
----------	----------

UNSPSC

UNSPSC 21.0	27121700
-------------	----------

AI-TWIN 2X 0,75-10 GY - Ferrule



3200975

<https://www.phoenixcontact.com/ca/products/3200975>

Environmental product compliance

EU RoHS	
Fulfills EU RoHS substance requirements	Yes, No exemptions
China RoHS	
Environment friendly use period (EFUP)	EFUP-E
	No hazardous substances above the limits
EU REACH SVHC	
REACH candidate substance (CAS No.)	No substance above 0.1 wt%

Phoenix Contact 2024 © - all rights reserved
<https://www.phoenixcontact.com>

PHOENIX CONTACT Ltd
8240 Parkhill Drive
Milton, Ontario L9T 5V7
1-800-890-2820
cdinfo@phoenixcontact.ca