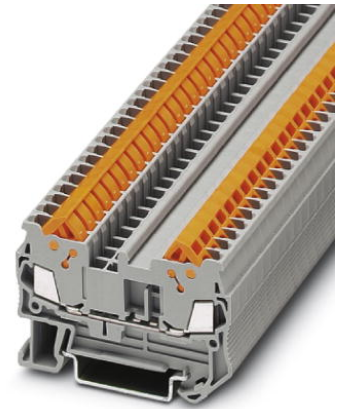


QTC 1,5

Order No.: 3205019

<http://eshop.phoenixcontact.de/phoenix/treeViewClick.do?UID=3205019>

Feed-through terminal blocks with fast connection, cross section: 0.25
- 1.5 mm², width: 5.2 mm, color: Gray



Commercial data	
EAN	4017918932411
Pack	50 Pcs.
Customs tariff	85369010
Weight/Piece	0.009278 KG
Catalog page information	Page 176 (CL-2007)

Product notes

WEEE/RoHS-compliant since:
01/01/2003



<http://www.download.phoenixcontact.com>
Please note that the data given here has been taken from the online catalog. For comprehensive information and data, please refer to the user documentation. The General Terms and Conditions of Use apply to Internet downloads.

Technical data**General**

Number of levels	1
Number of connections	2
Color	gray

Insulating material	PA
Inflammability class acc. to UL 94	V0

Dimensions

Width	5.2 mm
Length	58.8 mm
Height NS 35/7,5	39.3 mm
Height NS 35/15	46.8 mm

Technical data

Maximum load current	17.5 A (with 1.5 mm ² conductor cross section)
Rated surge voltage	8 kV
Pollution degree	3
Surge voltage category	III
Insulating material group	I
Connection in acc. with standard	IEC 60947-7-1
Nominal current I _N	17.5 A
Nominal voltage U _N	800 V
Open side panel	ja

Connection data

Conductor cross section solid min.	0.25 mm ²
Conductor cross section solid max.	1.5 mm ²
Conductor cross section stranded min.	0.25 mm ²
Conductor cross section stranded max.	1.5 mm ²
Conductor cross section AWG/kcmil min.	24
Conductor cross section AWG/kcmil max	16
Type of connection	Quick connection
Material wire insulation	PVC / PE
Structure of individual litz in acc. with VDE 0295 / smallest wire diameter	VDE 0295 Cl.1-5

Certificates / Approvals

Approval logo



CUL

Nominal voltage U_N	600 V
Nominal current I_N	10 A
AWG/kcmil	24-16

UL

Nominal voltage U_N	600 V
Nominal current I_N	10 A
AWG/kcmil	24-16
Certification	ABS, BV, CUL, DNV, GL, KR, LR, NK, UL

requested approbations

Certification Ex:	KEMA-EX
-------------------	---------

Accessories

Item	Designation	Description
------	-------------	-------------

Assembly

3206209	ATP-QTC	Partition plate, for visual and electrical separation of terminal groups, width: 2 mm, color: gray
3022218	CLIPFIX 35	Snap-on end bracket, for 35 mm NS 35/7.5 or NS 35/15 mounting rail, can be fitted with Zack strip ZB 8 and ZB 8/27, terminal strip marker KLM 2 and KLM, width: 9.5 mm, color: gray
3205161	D-QTC 1,5	Cover, for feed-through terminal block QTC 1,5, color: Gray
1201442	E/UK	End clamp, for supporting the electronic base. If mounted vertically, 2 end clamps are required in each case
0801762	NS 35/ 7,5 CU UNPERF 2000MM	DIN rail, material: Copper, unperforated, height 7.5 mm, width 35 mm, length: 2 m
0801733	NS 35/ 7,5 PERF 2000MM	DIN rail, material: Steel, perforated, height 7.5 mm, width 35 mm, length: 2 m
0801681	NS 35/ 7,5 UNPERF 2000MM	DIN rail, material: Steel, unperforated, height 7.5 mm, width 35 mm, length: 2 m
1201756	NS 35/15 AL UNPERF 2000MM	DIN rail, deep-drawn, high profile, unperforated, 1.5 mm thick, material: Aluminum, height 15 mm, width 35 mm, length 2 m
1201895	NS 35/15 CU UNPERF 2000MM	DIN rail, material: Copper, unperforated, 1.5 mm thick, height 15 mm, width 35 mm, length: 2 m
1201714	NS 35/15 UNPERF 2000MM	DIN rail, material: Steel, unperforated, height 15 mm, width 35 mm, length: 2 m
1201798	NS 35/15-2,3 UNPERF 2000MM	DIN rail, material: Steel, unperforated, 2.3 mm thick, height 15 mm, width 35 mm, length: 2 m

Bridges

3030161	FBS 2-5	Plug-in bridge for cross-connections in the terminal center, 2-pos., color: Red
3030174	FBS 3-5	Plug-in bridge for cross-connections in the terminal center, 3-pos., color: Red
3030187	FBS 4-5	Plug-in bridge for cross-connections in the terminal center, 4-pos., color: Red
3030190	FBS 5-5	Plug-in bridge for cross-connections in the terminal center, 5-pos., color: Red
3030213	FBS 10-5	Plug-in bridge for cross-connections in the terminal center, 10-pos., color: Red
3030226	FBS 20-5	Plug-in bridge for cross-connections in the terminal center, 20-pos., color: Red
3038930	FBS 50-5	Plug-in bridge for cross-connections in the terminal center, 50-pos., color: Red
3030886	RB ST 16-(2,5/4)	Adapter bridge, for connecting ST-16 spring-cage terminal blocks with ST-2.5 or ST-4 spring-cage terminal blocks
3030899	RB ST 35-(2,5/4)	Adapter bridge, for connecting ST-35 spring-cage terminal blocks with ST-2.5 or ST-4 spring-cage terminal blocks

General

3022276	CLIPFIX 35-5	Snap-on end bracket, for NS 35/7.5 or NS 35/15 DIN rail, can be fitted with Zack strip ZB 5 and ZBF 5, terminal strip marker KLM 2 and KLM, parking facility for FBS...5, FBS...6, KSS 5, KSS 6, width: 5,15 mm, color: gray
---------	--------------	--

Plug/Adapter

3030925	PAI-4	Test adapter, for 4 mm diameter test plug PS and safety test plug, makes contact in the bridge shaft
3030983	PS-5	Modular test plug, for individual assembly of test plug strips, for UT, ST, DT and QT terminal blocks, can be labeled with ZBF 5, color: Red
3030873	RB ST 10-(2,5/4)	Adapter bridge, for connecting ST-10 spring-cage terminal blocks with ST-2.5 or ST-4 spring-cage terminal blocks
3030860	RB ST 6-(2,5/4)	Bridge, 2-pos.

Tools

1204517	SZF 1-0,6X3,5	Screwdriver, blade: 0.6 x 3.5 x 100 mm, length 180 mm
---------	---------------	---