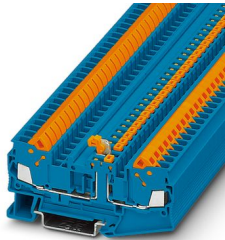


3205226
<https://www.phoenixcontact.com/us/products/3205226>

Please be informed that the data shown in this PDF document is generated from our online catalog. Please find the complete data in the user documentation. Our general terms of use for downloads are valid.



Knife-disconnect terminal block, nom. voltage: 400 V, nominal current: 20 A, 1 level, connection method: Quick connection, Rated cross section: 2.5 mm², cross section: 0.5 mm² - 2.5 mm², mounting: NS 35/7,5, NS 35/7,5, color: blue

Commercial data

Item number	3205226
Packing unit	1 pc
Sales key	BE03
Product key	BE3131
GTIN	4046356057622
Weight per piece (including packing)	12.95 g
Weight per piece (excluding packing)	12.95 g
Customs tariff number	85369010
Country of origin	CN

QTC 2,5-MT BU - Knife-disconnect terminal block



3205226

<https://www.phoenixcontact.com/us/products/3205226>

Technical data

Product properties

Product type	Disconnect terminal block
Number of connections	2
Number of rows	1
Potentials	1

Insulation characteristics

Overvoltage category	III
Degree of pollution	3

Electrical properties

Rated surge voltage	6 kV
Maximum power dissipation for nominal condition	0.77 W

Connection data

Number of connections per level	2
Frequency of connections with the same cross section	100.00
Nominal cross section	2.5 mm ²

1 level

Material wire insulation	PVC / PE
Connection in acc. with standard	IEC 60947-7-1
Conductor cross section rigid	0.5 mm ² ... 2.5 mm ²
Cross section AWG	20 ... 14 (converted acc. to IEC)
Conductor cross section flexible	0.5 mm ² ... 2.5 mm ²
Conductor cross section, flexible [AWG]	20 ... 14 (converted acc. to IEC)
Nominal current	20 A
Maximum load current	20 A (with a 2.5 mm ² conductor cross section)
Nominal voltage	400 V
Nominal cross section	2.5 mm ²

Dimensions

Width	6.2 mm
End cover width	2.2 mm
Height	82.5 mm
Depth on NS 35/7,5	42.8 mm
Depth on NS 35/15	50.3 mm

Material specifications

Color	blue
Flammability rating according to UL 94	V0
Insulating material group	I
Insulating material	PA

QTC 2,5-MT BU - Knife-disconnect terminal block



3205226

<https://www.phoenixcontact.com/us/products/3205226>

Static insulating material application in cold	-60 °C
Temperature index of insulation material (DIN EN 60216-1 (VDE 0304-21))	130 °C
Relative insulation material temperature index (Elec., UL 746 B)	130 °C
Fire protection for rail vehicles (DIN EN 45545-2) R22	HL 1 - HL 3
Fire protection for rail vehicles (DIN EN 45545-2) R23	HL 1 - HL 3
Fire protection for rail vehicles (DIN EN 45545-2) R24	HL 1 - HL 3
Fire protection for rail vehicles (DIN EN 45545-2) R26	HL 1 - HL 3
Calorimetric heat release NFPA 130 (ASTM E 1354)	28 MJ/kg
Surface flammability NFPA 130 (ASTM E 162)	passed
Specific optical density of smoke NFPA 130 (ASTM E 662)	passed
Smoke gas toxicity NFPA 130 (SMP 800C)	passed

Cable/line

Wire diameter incl. insulation	3.8 mm
--------------------------------	--------

Electrical tests

Surge voltage test

Test voltage setpoint	7.3 kV
Result	Test passed

Temperature-rise test

Requirement temperature-rise test	Increase in temperature ≤ 45 K
Result	Test passed
Short-time withstand current 2.5 mm ²	0.3 kA
Result	Test passed

Power-frequency withstand voltage

Test voltage setpoint	1.89 kV
Result	Test passed

Mechanical properties

Mechanical data

Open side panel	Yes
-----------------	-----

Mechanical tests

Mechanical strength

Result	Test passed
--------	-------------

Attachment on the carrier

DIN rail/fixing support	NS 35
Test force setpoint	1 N
Result	Test passed

Test for conductor damage and slackening

QTC 2,5-MT BU - Knife-disconnect terminal block



3205226

<https://www.phoenixcontact.com/us/products/3205226>

Rotation speed	10 rpm
Revolutions	135
Conductor cross section/weight	0.5 mm ² / 0.3 kg
	2.5 mm ² / 0.7 kg
Result	Test passed

Environmental and real-life conditions

Needle-flame test

Time of exposure	30 s
Result	Test passed

Ambient conditions

Ambient temperature (operation)	-60 °C ... 110 °C (Operating temperature range incl. self-heating; for max. short-term operating temperature, see RTI Elec.)
Ambient temperature (storage/transport)	-25 °C ... 60 °C (for a short time, not exceeding 24 h, -60 °C to +70 °C)
Ambient temperature (assembly)	-5 °C ... 70 °C
Ambient temperature (actuation)	-5 °C ... 70 °C
Permissible humidity (operation)	20 % ... 90 %
Permissible humidity (storage/transport)	30 % ... 70 %

Standards and regulations

Connection in acc. with standard	IEC 60947-7-1
----------------------------------	---------------

Mounting

Mounting type	NS 35/7,5
	NS 35/7,5

QTC 2,5-MT BU - Knife-disconnect terminal block

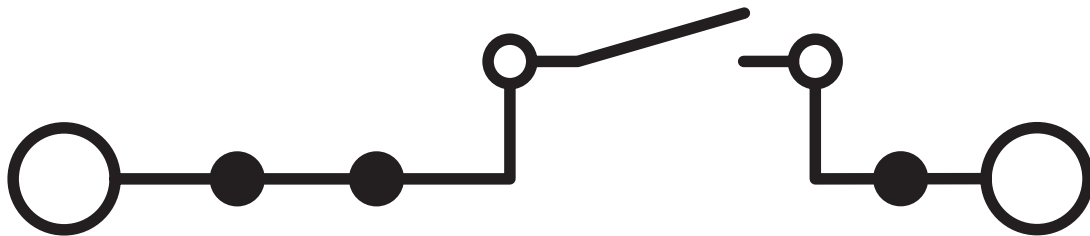


3205226

<https://www.phoenixcontact.com/us/products/3205226>

Drawings

Circuit diagram



QTC 2,5-MT BU - Knife-disconnect terminal block



3205226

<https://www.phoenixcontact.com/us/products/3205226>

Approvals

To download certificates, visit the product detail page: <https://www.phoenixcontact.com/us/products/3205226>

DNV

Approval ID: TAE000014H



CSA

Approval ID: 2030668

	Nominal voltage U_N	Nominal current I_N	Cross section AWG	Cross section mm^2
Use group B				
	300 V	15 A	20 - 14	-
Use group C				
	300 V	15 A	20 - 14	-
Use group D				
	600 V	5 A	20 - 14	-



EAC

Approval ID: RU C-DE.BL08.B.00539



cULus Recognized

Approval ID: E60425

	Nominal voltage U_N	Nominal current I_N	Cross section AWG	Cross section mm^2
Use group B				
	300 V	15 A	20 - 14	-
Use group C				
	300 V	15 A	20 - 14	-



LR

Approval ID: LR2002130TA

QTC 2,5-MT BU - Knife-disconnect terminal block



3205226

<https://www.phoenixcontact.com/us/products/3205226>

Classifications

ECLASS

ECLASS-11.0	27141120
ECLASS-13.0	27250201

ETIM

ETIM 9.0	EC000897
----------	----------

UNSPSC

UNSPSC 21.0	39121400
-------------	----------

QTC 2,5-MT BU - Knife-disconnect terminal block



3205226

<https://www.phoenixcontact.com/us/products/3205226>

Environmental product compliance

China RoHS	Environmentally friendly use period: unlimited = EFUP-e
	No hazardous substances above threshold values

QTC 2,5-MT BU - Knife-disconnect terminal block



3205226

<https://www.phoenixcontact.com/us/products/3205226>

Accessories



Note: Applying some accessories below might limit this product.

FBS 2-6 - Plug-in bridge

3030336

<https://www.phoenixcontact.com/us/products/3030336>



Plug-in bridge, pitch: 6.2 mm, number of positions: 2, color: red



Max. current carrying capacity: 32 A

FBS 3-6 - Plug-in bridge

3030242

<https://www.phoenixcontact.com/us/products/3030242>



Plug-in bridge, pitch: 6.2 mm, number of positions: 3, color: red



Max. current carrying capacity: 32 A

QTC 2,5-MT BU - Knife-disconnect terminal block



3205226

<https://www.phoenixcontact.com/us/products/3205226>

FBS 4-6 - Plug-in bridge

3030255

<https://www.phoenixcontact.com/us/products/3030255>



Plug-in bridge, pitch: 6.2 mm, number of positions: 4, color: red

 Max. current carrying capacity: 32 A

FBS 5-6 - Plug-in bridge

3030349

<https://www.phoenixcontact.com/us/products/3030349>



Plug-in bridge, pitch: 6.2 mm, number of positions: 5, color: red

 Max. current carrying capacity: 32 A

QTC 2,5-MT BU - Knife-disconnect terminal block



3205226

<https://www.phoenixcontact.com/us/products/3205226>

FBS 6-6 - Plug-in bridge

1008238

<https://www.phoenixcontact.com/us/products/1008238>



Plug-in bridge, One side not fully isolated, pitch: 6.2 mm, number of positions: 6, color: red

 Max. current carrying capacity: 32 A

FBS 10-6 - Plug-in bridge

3030271

<https://www.phoenixcontact.com/us/products/3030271>



Plug-in bridge, pitch: 6.2 mm, number of positions: 10, color: red

 Max. current carrying capacity: 32 A

QTC 2,5-MT BU - Knife-disconnect terminal block



3205226

<https://www.phoenixcontact.com/us/products/3205226>

FBS 20-6 - Plug-in bridge

3030365

<https://www.phoenixcontact.com/us/products/3030365>



Plug-in bridge, pitch: 6.2 mm, number of positions: 20, color: red

 Max. current carrying capacity: 32 A


FBS 50-6 - Plug-in bridge

3032224

<https://www.phoenixcontact.com/us/products/3032224>



Plug-in bridge, pitch: 6.2 mm, number of positions: 50, color: red

 Max. current carrying capacity: 32 A

QTC 2,5-MT BU - Knife-disconnect terminal block



3205226

<https://www.phoenixcontact.com/us/products/3205226>

FBSR 2-6 - Plug-in bridge

3033715

<https://www.phoenixcontact.com/us/products/3033715>



Plug-in bridge, pitch: 6.2 mm, number of positions: 2, color: red

 Max. current carrying capacity: 24 A

FBSR 3-6 - Plug-in bridge

3001594

<https://www.phoenixcontact.com/us/products/3001594>



Plug-in bridge, pitch: 6.2 mm, number of positions: 3, color: red

 Max. current carrying capacity: 24 A

QTC 2,5-MT BU - Knife-disconnect terminal block



3205226

<https://www.phoenixcontact.com/us/products/3205226>

FBSR 4-6 - Plug-in bridge

3001595

<https://www.phoenixcontact.com/us/products/3001595>



Plug-in bridge, pitch: 6.2 mm, number of positions: 4, color: red

 Max. current carrying capacity: 24 A

FBSR 5-6 - Plug-in bridge

3001596

<https://www.phoenixcontact.com/us/products/3001596>



Plug-in bridge, pitch: 6.2 mm, number of positions: 5, color: red

 Max. current carrying capacity: 24 A

QTC 2,5-MT BU - Knife-disconnect terminal block



3205226

<https://www.phoenixcontact.com/us/products/3205226>

FBSR 10-6 - Plug-in bridge

3033716

<https://www.phoenixcontact.com/us/products/3033716>



Plug-in bridge, pitch: 6.2 mm, number of positions: 10, color: red

 Max. current carrying capacity: 24 A


FBSRH 2-6 - Short-circuit connector

3033812

<https://www.phoenixcontact.com/us/products/3033812>



Short-circuit connector, pitch: 6.2 mm, number of positions: 2, color: red

 Max. current carrying capacity: 24 A

QTC 2,5-MT BU - Knife-disconnect terminal block



3205226

<https://www.phoenixcontact.com/us/products/3205226>

FBS 2-6 BU - Plug-in bridge

3036932

<https://www.phoenixcontact.com/us/products/3036932>



Plug-in bridge, pitch: 6.2 mm, number of positions: 2, color: blue

 Max. current carrying capacity: 32 A

FBS 3-6 BU - Plug-in bridge

3036945

<https://www.phoenixcontact.com/us/products/3036945>



Plug-in bridge, pitch: 6.2 mm, number of positions: 3, color: blue

 Max. current carrying capacity: 32 A

QTC 2,5-MT BU - Knife-disconnect terminal block



3205226

<https://www.phoenixcontact.com/us/products/3205226>

FBS 4-6 BU - Plug-in bridge

3036958

<https://www.phoenixcontact.com/us/products/3036958>



Plug-in bridge, pitch: 6.2 mm, number of positions: 4, color: blue

 Max. current carrying capacity: 32 A

FBS 5-6 BU - Plug-in bridge

3036961

<https://www.phoenixcontact.com/us/products/3036961>



Plug-in bridge, pitch: 6.2 mm, number of positions: 5, color: blue

 Max. current carrying capacity: 32 A

QTC 2,5-MT BU - Knife-disconnect terminal block



3205226

<https://www.phoenixcontact.com/us/products/3205226>


FBS 10-6 BU - Plug-in bridge

3032198

<https://www.phoenixcontact.com/us/products/3032198>



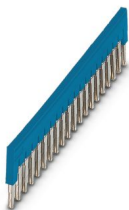
Plug-in bridge, pitch: 6.2 mm, number of positions: 10, color: blue

 Max. current carrying capacity: 32 A

FBS 20-6 BU - Plug-in bridge

3032208

<https://www.phoenixcontact.com/us/products/3032208>



Plug-in bridge, pitch: 6.2 mm, number of positions: 20, color: blue

 Max. current carrying capacity: 32 A

QTC 2,5-MT BU - Knife-disconnect terminal block



3205226

<https://www.phoenixcontact.com/us/products/3205226>

FBS 50-6 BU - Plug-in bridge

3032211

<https://www.phoenixcontact.com/us/products/3032211>



Plug-in bridge, pitch: 6.2 mm, number of positions: 50, color: blue

 Max. current carrying capacity: 32 A

RB ST (2,5/4)-1,5/S - Reducing bridge

3214356

<https://www.phoenixcontact.com/us/products/3214356>



Reducing bridge, pitch: 6.7 mm, number of positions: 2, length: 23 mm, color: red

 Max. current carrying capacity: 24 A

QTC 2,5-MT BU - Knife-disconnect terminal block



3205226

<https://www.phoenixcontact.com/us/products/3205226>


RB ST 6-(2,5/4) - Reducing bridge

3030860

<https://www.phoenixcontact.com/us/products/3030860>



Reducing bridge, pitch: 9 mm, number of positions: 2, length: 30 mm, color: red

 Max. current carrying capacity: 35 A

RB ST 10-(2,5/4) - Reducing bridge

3030873

<https://www.phoenixcontact.com/us/products/3030873>



Reducing bridge, pitch: 10 mm, number of positions: 2, length: 36 mm, color: red

 Max. current carrying capacity: 35 A

QTC 2,5-MT BU - Knife-disconnect terminal block



3205226

<https://www.phoenixcontact.com/us/products/3205226>


RB ST 16-(2,5/4) - Reducing bridge

3030886

<https://www.phoenixcontact.com/us/products/3030886>



Reducing bridge, pitch: 11 mm, number of positions: 2, length: 37 mm, color: red

 Max. current carrying capacity: 35 A


RB ST 35-(2,5/4) - Reducing bridge

3030899

<https://www.phoenixcontact.com/us/products/3030899>



Reducing bridge, pitch: 11 mm, number of positions: 2, color: red

 Max. current carrying capacity: 35 A

QTC 2,5-MT BU - Knife-disconnect terminal block



3205226

<https://www.phoenixcontact.com/us/products/3205226>

RB ST (2,5/4)-1,5 - Reducing bridge

3038943

<https://www.phoenixcontact.com/us/products/3038943>



Reducing bridge, pitch: 7.1 mm, number of positions: 2, length: 23 mm, color: red

 Max. current carrying capacity: 24 A

RB UT 6-ST(2,5/4) - Reducing bridge

3047264

<https://www.phoenixcontact.com/us/products/3047264>



Reducing bridge, pitch: 9.5 mm, number of positions: 2, length: 33 mm, color: red

 Max. current carrying capacity: 35 A

QTC 2,5-MT BU - Knife-disconnect terminal block



3205226

<https://www.phoenixcontact.com/us/products/3205226>


RB UT 35-ST(2,5/4) - Reducing bridge

3047280

<https://www.phoenixcontact.com/us/products/3047280>



Reducing bridge, pitch: 10.8 mm, number of positions: 2, color: red

 Max. current carrying capacity: 40 A

RB UT 10-ST(2,5/4) - Reducing bridge

3047086

<https://www.phoenixcontact.com/us/products/3047086>



Reducing bridge, pitch: 10.2 mm, number of positions: 2, length: 33 mm, color: red

 Max. current carrying capacity: 40 A

QTC 2,5-MT BU - Knife-disconnect terminal block

3205226

<https://www.phoenixcontact.com/us/products/3205226>




RB UT 16-ST(2,5/4) - Reducing bridge

3047099

<https://www.phoenixcontact.com/us/products/3047099>



Reducing bridge, pitch: 11 mm, number of positions: 2, length: 41 mm, color: red

 Max. current carrying capacity: 40 A

D-QTC 2,5-TWIN - End cover

3206571

<https://www.phoenixcontact.com/us/products/3206571>

End cover, depth: 31.6 mm, width: 2.2 mm, height: 82.5 mm, color: gray



QTC 2,5-MT BU - Knife-disconnect terminal block

3205226

<https://www.phoenixcontact.com/us/products/3205226>

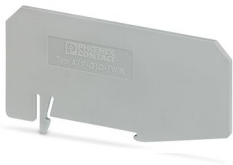


ATP-QTC TWIN - Partition plate

3206212

<https://www.phoenixcontact.com/us/products/3206212>

Partition plate, depth: 46 mm, width: 2 mm, height: 84.4 mm, color: gray



S-MT - Switching lock

3247954

<https://www.phoenixcontact.com/us/products/3247954>

Switching lock, depth: 23.1 mm, width: 3.5 mm, height: 10.5 mm, color: white



QTC 2,5-MT BU - Knife-disconnect terminal block



3205226

<https://www.phoenixcontact.com/us/products/3205226>

LPS-6/E - Service connector

3270540

<https://www.phoenixcontact.com/us/products/3270540>



Service connector, nom. voltage: 800 V, nominal current: 24 A, number of positions: 1, connection method: Push-in connection, Rated cross section: 2.5 mm², cross section: 0.14 mm²- 4 mm², color: red

LPS-6 - Service connector

3270541

<https://www.phoenixcontact.com/us/products/3270541>



Service connector, nom. voltage: 800 V, nominal current: 24 A, number of positions: 1, connection method: Push-in connection, Rated cross section: 2.5 mm², cross section: 0.14 mm²- 4 mm², color: red

QTC 2,5-MT BU - Knife-disconnect terminal block



3205226

<https://www.phoenixcontact.com/us/products/3205226>

LPO 4/E - Pick-up plug

3270519

<https://www.phoenixcontact.com/us/products/3270519>



Pick-up plug, nom. voltage: 800 V, nominal current: 24 A, number of positions: 1, connection method: Push-in connection, Rated cross section: 2.5 mm², cross section: 0.14 mm²- 4 mm², color: gray

LPO 4 - Pick-up plug

3270522

<https://www.phoenixcontact.com/us/products/3270522>



Pick-up plug, nom. voltage: 800 V, nominal current: 24 A, number of positions: 1, connection method: Push-in connection, Rated cross section: 2.5 mm², cross section: 0.14 mm²- 4 mm², color: gray

QTC 2,5-MT BU - Knife-disconnect terminal block

3205226

<https://www.phoenixcontact.com/us/products/3205226>



NS 35/ 7,5 PERF 2000MM - DIN rail perforated

0801733

<https://www.phoenixcontact.com/us/products/0801733>



DIN rail perforated, Pack of 25 (50 m), acc. to EN 60715, material: Steel, galvanized, passivated with a thick layer, Standard profile, color: silver

NS 35/ 7,5 UNPERF 2000MM - DIN rail, unperforated

0801681

<https://www.phoenixcontact.com/us/products/0801681>



DIN rail, unperforated, Pack of 25 (50 m), acc. to EN 60715, material: Steel, galvanized, passivated with a thick layer, Standard profile, color: silver

QTC 2,5-MT BU - Knife-disconnect terminal block

3205226

<https://www.phoenixcontact.com/us/products/3205226>



NS 35/ 7,5 WH PERF 2000MM - DIN rail perforated

1204119

<https://www.phoenixcontact.com/us/products/1204119>



DIN rail perforated, Pack of 25 (50 m), acc. to EN 60715, material: Steel, Galvanized, white passivated, Standard profile, color: silver

NS 35/ 7,5 WH UNPERF 2000MM-VPE 10 - DIN rail, unperforated

1204122

<https://www.phoenixcontact.com/us/products/1204122>



DIN rail, unperforated, Pack of 10 (20 m), acc. to EN 60715, material: Steel, Galvanized, white passivated, Standard profile, color: silver

QTC 2,5-MT BU - Knife-disconnect terminal block

3205226

<https://www.phoenixcontact.com/us/products/3205226>



NS 35/ 7,5 AL UNPERF 2000MM - DIN rail, unperforated

0801704

<https://www.phoenixcontact.com/us/products/0801704>



DIN rail, unperforated, Pack of 25 (50 m), acc. to EN 60715, material: Aluminum, uncoated, Standard profile, color: silver

NS 35/ 7,5 ZN PERF 2000MM - DIN rail perforated

1206421

<https://www.phoenixcontact.com/us/products/1206421>



DIN rail perforated, Pack of 25 (50 m), acc. to EN 60715, material: Steel, galvanized, Standard profile, color: silver

QTC 2,5-MT BU - Knife-disconnect terminal block

3205226

<https://www.phoenixcontact.com/us/products/3205226>



NS 35/ 7,5 ZN UNPERF 2000MM - DIN rail, unperforated

1206434

<https://www.phoenixcontact.com/us/products/1206434>



DIN rail, unperforated, Pack of 25 (50 m), acc. to EN 60715, material: Steel, galvanized, Standard profile, color: silver

NS 35/ 7,5 CU UNPERF 2000MM-VPE 10 - DIN rail, unperforated

0801762

<https://www.phoenixcontact.com/us/products/0801762>



DIN rail, unperforated, Pack of 10 (20 m), acc. to EN 60715, material: Copper, uncoated, Standard profile, color: copper-colored

QTC 2,5-MT BU - Knife-disconnect terminal block

3205226

<https://www.phoenixcontact.com/us/products/3205226>



NS 35/ 7,5 CAP - End cap

1206560

<https://www.phoenixcontact.com/us/products/1206560>

DIN rail end piece, for DIN rail NS 35/7.5



NS 35/15 PERF 2000MM - DIN rail perforated

1201730

<https://www.phoenixcontact.com/us/products/1201730>



DIN rail perforated, Pack of 25 (50 m), similar to EN 60715, material: Steel, galvanized, passivated with a thick layer, Standard profile, color: silver

QTC 2,5-MT BU - Knife-disconnect terminal block

3205226

<https://www.phoenixcontact.com/us/products/3205226>



NS 35/15 UNPERF 2000MM - DIN rail, unperforated

1201714

<https://www.phoenixcontact.com/us/products/1201714>



DIN rail, unperforated, Pack of 25 (50 m), similar to EN 60715, material: Steel, galvanized, passivated with a thick layer, Standard profile, color: silver

NS 35/15 WH PERF 2000MM - DIN rail perforated

0806602

<https://www.phoenixcontact.com/us/products/0806602>



DIN rail perforated, Pack of 25 (50 m), similar to EN 60715, material: Steel, Galvanized, white passivated, Standard profile, color: white

QTC 2,5-MT BU - Knife-disconnect terminal block

3205226

<https://www.phoenixcontact.com/us/products/3205226>



NS 35/15 WH UNPERF 2000MM-VPE 10 - DIN rail, unperforated

1204135

<https://www.phoenixcontact.com/us/products/1204135>



DIN rail, unperforated, Pack of 10 (20 m), similar to EN 60715, material: Steel, Galvanized, white passivated, Standard profile, color: silver

NS 35/15 AL UNPERF 2000MM - DIN rail, unperforated

1201756

<https://www.phoenixcontact.com/us/products/1201756>



DIN rail, unperforated, similar to EN 60715, material: Aluminum, uncoated, Standard profile, color: silver

QTC 2,5-MT BU - Knife-disconnect terminal block

3205226

<https://www.phoenixcontact.com/us/products/3205226>



NS 35/15 ZN PERF 2000MM - DIN rail perforated

1206599

<https://www.phoenixcontact.com/us/products/1206599>



DIN rail perforated, Pack of 25 (50 m), similar to EN 60715, material: Steel, galvanized, Standard profile, color: silver

NS 35/15 ZN UNPERF 2000MM - DIN rail, unperforated

1206586

<https://www.phoenixcontact.com/us/products/1206586>



DIN rail, unperforated, Pack of 25 (50 m), similar to EN 60715, material: Steel, galvanized, Standard profile, color: silver

QTC 2,5-MT BU - Knife-disconnect terminal block



3205226

<https://www.phoenixcontact.com/us/products/3205226>

NS 35/15 CU UNPERF 2000MM-VPE 10 - DIN rail, unperforated

1201895

<https://www.phoenixcontact.com/us/products/1201895>



DIN rail, unperforated, Pack of 10 (20 m), similar to EN 60715, material: Copper, uncoated, Standard profile, color: copper-colored

NS 35/15 CAP - End cap

1206573

<https://www.phoenixcontact.com/us/products/1206573>

DIN rail end piece, for DIN rail NS 35/15



QTC 2,5-MT BU - Knife-disconnect terminal block

3205226

<https://www.phoenixcontact.com/us/products/3205226>



NS 35/15-2,3 UNPERF 2000MM-VPE 10 - DIN rail, unperforated

1201798

<https://www.phoenixcontact.com/us/products/1201798>



DIN rail, unperforated, Pack of 10 (20 m), acc. to EN 60715, material: Steel, galvanized, passivated with a thick layer, Standard profile 2.3 mm, color: silver

ZB 6:UNBEDRUCKT - Zack marker strip

1051003

<https://www.phoenixcontact.com/us/products/1051003>



Zack marker strip, Strip, white, unlabeled, can be labeled with: PLOTMARK, CMS-P1-PLOTTER, mounting type: snapped, for terminal block width: 6.2 mm, lettering field size: 6.15 x 10.5 mm, Number of individual labels: 10

QTC 2,5-MT BU - Knife-disconnect terminal block

3205226

<https://www.phoenixcontact.com/us/products/3205226>



ZB 6 CUS - Zack marker strip

0824992

<https://www.phoenixcontact.com/us/products/0824992>



Zack marker strip, can be ordered: Strip, white, labeled according to customer specifications, mounting type: snap into tall marker groove, for terminal block width: 6.2 mm, lettering field size: 6.15 x 10.5 mm, Number of individual labels: 10

ZB 6,LGS:FORTL.ZAHLEN - Zack marker strip

1051016

<https://www.phoenixcontact.com/us/products/1051016>



Zack marker strip, Strip, white, labeled, can be labeled with: CMS-P1-PLOTTER, printed horizontally: consecutive numbers 1 ... 10, 11 ... 20, etc. up to 491 ... 500, mounting type: snapped, for terminal block width: 6.2 mm, lettering field size: 6.15 x 10.5 mm, Number of individual labels: 10

QTC 2,5-MT BU - Knife-disconnect terminal block



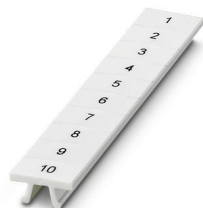
3205226

<https://www.phoenixcontact.com/us/products/3205226>

ZB 6,QR:FORTL.ZAHLEN - Zack marker strip

1051029

<https://www.phoenixcontact.com/us/products/1051029>



Zack marker strip, Strip, white, labeled, can be labeled with: CMS-P1-PLOTTER, Printed vertically: consecutive numbers 1 ... 10, 11 ... 20, etc. up to 491 ... 500, mounting type: snapped, for terminal block width: 6.2 mm, lettering field size: 6.15 x 10.5 mm, Number of individual labels: 10

ZB 6,LGS:GLEICHE ZAHLEN - Zack marker strip

1051032

<https://www.phoenixcontact.com/us/products/1051032>



Zack marker strip, Strip, white, labeled, can be labeled with: CMS-P1-PLOTTER, printed horizontally: Identical numbers 1 or 2, etc. up to 100, mounting type: snapped, for terminal block width: 6.2 mm, lettering field size: 6.15 x 10.5 mm, Number of individual labels: 10

QTC 2,5-MT BU - Knife-disconnect terminal block



3205226

<https://www.phoenixcontact.com/us/products/3205226>

ZB 6,LGS:L1-N,PE - Marker for terminal blocks

1051414

<https://www.phoenixcontact.com/us/products/1051414>



Marker for terminal blocks, Strip, white, labeled, can be labeled with: CMS-P1-PLOTTER, horizontal: L1, L2, L3, N, PE, L1, L2, L3, N, PE, mounting type: snapped, for terminal block width: 6.2 mm, lettering field size: 6.15 x 10.5 mm, Number of individual labels: 10

ZB 6,LGS:U-N - Marker for terminal blocks

1051430

<https://www.phoenixcontact.com/us/products/1051430>



Marker for terminal blocks, Strip, white, labeled, can be labeled with: CMS-P1-PLOTTER, printed horizontally: U, V, W, N, GND, U, V, W, N, GND, mounting type: snapped, for terminal block width: 6.2 mm, lettering field size: 6.15 x 10.5 mm, Number of individual labels: 10

QTC 2,5-MT BU - Knife-disconnect terminal block



3205226

<https://www.phoenixcontact.com/us/products/3205226>

UC-TM 6 - Marker for terminal blocks

0818085

<https://www.phoenixcontact.com/us/products/0818085>



Marker for terminal blocks, Sheet, white, unlabeled, can be labeled with: BLUEMARK ID COLOR, BLUEMARK ID, BLUEMARK CLED, PLOTMARK, CMS-P1-PLOTTER, mounting type: snapped, for terminal block width: 6.2 mm, lettering field size: 5.6 x 10.5 mm, Number of individual labels: 80

UC-TM 6 CUS - Marker for terminal blocks

0824589

<https://www.phoenixcontact.com/us/products/0824589>



Marker for terminal blocks, can be ordered: by sheet, white, labeled according to customer specifications, mounting type: snap into tall marker groove, for terminal block width: 6.2 mm, lettering field size: 5.6 x 10.5 mm, Number of individual labels: 80

QTC 2,5-MT BU - Knife-disconnect terminal block

3205226

<https://www.phoenixcontact.com/us/products/3205226>



UCT-TM 6 - Marker for terminal blocks

0828736

<https://www.phoenixcontact.com/us/products/0828736>



Marker for terminal blocks, Sheet, white, unlabeled, can be labeled with: TOPMARK NEO, TOPMARK LASER, BLUEMARK ID COLOR, BLUEMARK ID, BLUEMARK CLED, THERMOMARK PRIME, THERMOMARK CARD 2.0, THERMOMARK CARD, mounting type: snapped, for terminal block width: 6.2 mm, lettering field size: 5.6 x 10.5 mm, Number of individual labels: 60

UCT-TM 6 CUS - Marker for terminal blocks

0829602

<https://www.phoenixcontact.com/us/products/0829602>



Marker for terminal blocks, can be ordered: by sheet, white, labeled according to customer specifications, mounting type: snap into tall marker groove, for terminal block width: 6.2 mm, lettering field size: 5.6 x 10.5 mm, Number of individual labels: 60

QTC 2,5-MT BU - Knife-disconnect terminal block

3205226

<https://www.phoenixcontact.com/us/products/3205226>



ZBF 6:UNBEDRUCKT - Zack Marker strip, flat

0808710

<https://www.phoenixcontact.com/us/products/0808710>



Zack Marker strip, flat, Strip, white, unlabeled, can be labeled with: PLOTMARK, CMS-P1-PLOTTER, mounting type: snapped, for terminal block width: 6.2 mm, lettering field size: 5.15 x 6.15 mm, Number of individual labels: 10

ZBF 6 CUS - Zack Marker strip, flat

0825027

<https://www.phoenixcontact.com/us/products/0825027>



Zack Marker strip, flat, Strip, can be ordered: Strip, white, labeled according to customer specifications, mounting type: snap into flat marker groove, for terminal block width: 6.2 mm, lettering field size: 5.15 x 6.15 mm, Number of individual labels: 10

QTC 2,5-MT BU - Knife-disconnect terminal block



3205226

<https://www.phoenixcontact.com/us/products/3205226>

UC-TMF 6 - Marker for terminal blocks

0818140

<https://www.phoenixcontact.com/us/products/0818140>



Marker for terminal blocks, Sheet, white, unlabeled, can be labeled with: BLUEMARK ID COLOR, BLUEMARK ID, BLUEMARK CLED, PLOTMARK, CMS-P1-PLOTTER, mounting type: snapped, for terminal block width: 6.2 mm, lettering field size: 5.6 x 5.1 mm, Number of individual labels: 80

UC-TMF 6 CUS - Marker for terminal blocks

0824646

<https://www.phoenixcontact.com/us/products/0824646>



Marker for terminal blocks, can be ordered: by sheet, white, labeled according to customer specifications, mounting type: snap into flat marker groove, for terminal block width: 6.2 mm, lettering field size: 5.6 x 5.1 mm, Number of individual labels: 80

QTC 2,5-MT BU - Knife-disconnect terminal block



3205226

<https://www.phoenixcontact.com/us/products/3205226>

UCT-TMF 6 - Marker for terminal blocks

0828746

<https://www.phoenixcontact.com/us/products/0828746>



Marker for terminal blocks, Sheet, white, unlabeled, can be labeled with: TOPMARK NEO, TOPMARK LASER, BLUEMARK ID COLOR, BLUEMARK ID, BLUEMARK CLED, THERMOMARK PRIME, THERMOMARK CARD 2.0, THERMOMARK CARD, mounting type: snapped, for terminal block width: 6.2 mm, lettering field size: 5.4 x 4.7 mm, Number of individual labels: 60

UCT-TMF 6 CUS - Marker for terminal blocks

0829665

<https://www.phoenixcontact.com/us/products/0829665>



Marker for terminal blocks, can be ordered: by sheet, white, labeled according to customer specifications, mounting type: snap into flat marker groove, for terminal block width: 6.2 mm, lettering field size: 5.4 x 4.7 mm, Number of individual labels: 60

QTC 2,5-MT BU - Knife-disconnect terminal block



3205226

<https://www.phoenixcontact.com/us/products/3205226>

ZBF 6,LGS:FORTL.ZAHLEN - Zack Marker strip, flat

0808749

<https://www.phoenixcontact.com/us/products/0808749>



Zack Marker strip, flat, Strip, white, labeled, printed horizontally: consecutive numbers 1 ... 10, 11 ... 20, etc. up to 91 ... 100, mounting type: snapped, for terminal block width: 6.2 mm, lettering field size: 5.15 x 6.15 mm, Number of individual labels: 10

ZBF 6,QR:FORTL.ZAHLEN - Zack Marker strip, flat

0808765

<https://www.phoenixcontact.com/us/products/0808765>



Zack Marker strip, flat, Strip, white, labeled, Printed vertically: consecutive numbers 1 ... 10, 11 ... 20, etc. up to 91 ... 100, mounting type: snapped, for terminal block width: 6.2 mm, lettering field size: 5.15 x 6.15 mm, Number of individual labels: 10

QTC 2,5-MT BU - Knife-disconnect terminal block



3205226

<https://www.phoenixcontact.com/us/products/3205226>

ZBF 6,LGS:GERADE ZAHLEN - Zack Marker strip, flat

0810834

<https://www.phoenixcontact.com/us/products/0810834>

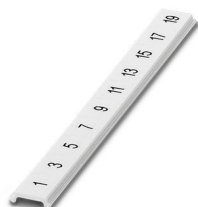


Zack Marker strip, flat, Strip, white, labeled, printed horizontally: consecutive even numbers 2 ... 20, 22 ... 40, etc. up to 82 ... 100, mounting type: snapped, for terminal block width: 6.2 mm, lettering field size: 5.15 x 6.15 mm, Number of individual labels: 10

ZBF 6,LGS:UNGERADE ZAHLEN - Zack Marker strip, flat

0810876

<https://www.phoenixcontact.com/us/products/0810876>



Zack Marker strip, flat, Strip, white, labeled, printed horizontally: Odd numbers 1 - 19, 21 - 39, etc. up to 81 - 99, mounting type: snapped, for terminal block width: 6.2 mm, lettering field size: 5.15 x 6.15 mm, Number of individual labels: 10

QTC 2,5-MT BU - Knife-disconnect terminal block

3205226

<https://www.phoenixcontact.com/us/products/3205226>



PAI-4-FIX-5/6 BU - Test adapter

3035975

<https://www.phoenixcontact.com/us/products/3035975>



4 mm test adapter, for terminal blocks with 5.2 mm and 6.2 mm pitch

PAI-4-FIX-5/6 OG - Test adapter

3035974

<https://www.phoenixcontact.com/us/products/3035974>



4 mm test adapter, for terminal blocks with 5.2 mm and 6.2 mm pitch

QTC 2,5-MT BU - Knife-disconnect terminal block

3205226

<https://www.phoenixcontact.com/us/products/3205226>



PAI-4-FIX-5/6 YE - Test adapter

3035977

<https://www.phoenixcontact.com/us/products/3035977>



4 mm test adapter, for terminal blocks with 5.2 mm and 6.2 mm pitch

PAI-4-FIX-5/6 RD - Test adapter

3035976

<https://www.phoenixcontact.com/us/products/3035976>



4 mm test adapter, for terminal blocks with 5.2 mm and 6.2 mm pitch

QTC 2,5-MT BU - Knife-disconnect terminal block

3205226

<https://www.phoenixcontact.com/us/products/3205226>



PAI-4-FIX-5/6 GN - Test adapter

3035978

<https://www.phoenixcontact.com/us/products/3035978>



4 mm test adapter, for terminal blocks with 5.2 mm and 6.2 mm pitch

PAI-4-FIX-5/6 BK - Test adapter

3035980

<https://www.phoenixcontact.com/us/products/3035980>



4 mm test adapter, for terminal blocks with 5.2 mm and 6.2 mm pitch

QTC 2,5-MT BU - Knife-disconnect terminal block

3205226

<https://www.phoenixcontact.com/us/products/3205226>



PAI-4-FIX-5/6 GY - Test adapter

3035982

<https://www.phoenixcontact.com/us/products/3035982>



4 mm test adapter, for terminal blocks with 5.2 mm and 6.2 mm pitch

PAI-4-FIX-5/6 VT - Test adapter

3035979

<https://www.phoenixcontact.com/us/products/3035979>



4 mm test adapter, for terminal blocks with 5.2 mm and 6.2 mm pitch

QTC 2,5-MT BU - Knife-disconnect terminal block

3205226

<https://www.phoenixcontact.com/us/products/3205226>



PAI-4-FIX-5/6 BN - Test adapter

3035981

<https://www.phoenixcontact.com/us/products/3035981>



4 mm test adapter, for terminal blocks with 5.2 mm and 6.2 mm pitch

PAI-4-FIX-5/6 WH - Test adapter

3035983

<https://www.phoenixcontact.com/us/products/3035983>



4 mm test adapter, for terminal blocks with 5.2 mm and 6.2 mm pitch

QTC 2,5-MT BU - Knife-disconnect terminal block

3205226

<https://www.phoenixcontact.com/us/products/3205226>



PS-6 - Test plug

3030996

<https://www.phoenixcontact.com/us/products/3030996>



Test plug, Modular test plug, number of positions: 1, color: red

PS-6/2,3MM RD - Test plug

3038736

<https://www.phoenixcontact.com/us/products/3038736>



Test plug, number of positions: 1, color: red

QTC 2,5-MT BU - Knife-disconnect terminal block



3205226

<https://www.phoenixcontact.com/us/products/3205226>

CLIPFIX 35 - End bracket

3022218

<https://www.phoenixcontact.com/us/products/3022218>



Quick mounting end clamp for NS 35/7,5 DIN rail or NS 35/15 DIN rail, with marking option, width: 9.5 mm, color: gray

CLIPFIX 35-5 - End bracket

3022276

<https://www.phoenixcontact.com/us/products/3022276>



Quick mounting end clamp for NS 35/7,5 DIN rail or NS 35/15 DIN rail, with marking option, with parking option for FBS...5, FBS...6, KSS 5, KSS 6, width: 5.15 mm, color: gray

QTC 2,5-MT BU - Knife-disconnect terminal block

3205226

<https://www.phoenixcontact.com/us/products/3205226>

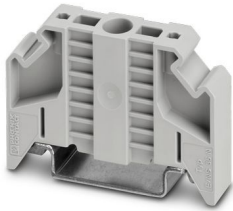


E/NS 35 N - End bracket

0800886

<https://www.phoenixcontact.com/us/products/0800886>

End clamp, width: 9.5 mm, color: gray



SZF 1-0,6X3,5 - Screwdriver

1204517

<https://www.phoenixcontact.com/us/products/1204517>

Actuation tool, for ST terminal blocks, also suitable for use as a bladed screwdriver, size: 0.6 x 3.5 x 100 mm, 2-component grip, with non-slip grip



Phoenix Contact 2024 © - all rights reserved
<https://www.phoenixcontact.com>

Phoenix Contact USA
586 Fulling Mill Road
Middletown, PA 17057, United States
(+717) 944-1300
info@phoenixcon.com