

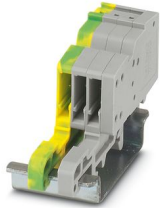
PPC 1,5/S-NS/3 (1GNYE/2GY) - COMBI coupling



3213345

<https://www.phoenixcontact.com/us/products/3213345>

Please be informed that the data shown in this PDF document is generated from our online catalog. Please find the complete data in the user documentation. Our general terms of use for downloads are valid.



COMBI coupling, nom. voltage: 500 V, nominal current: 17.5 A, number of connections: 1, number of positions: 3, connection method: Push-in connection, 1 level, Rated cross section: 1.5 mm², cross section: 0.14 mm² - 1.5 mm², color: green/yellow-gray

Your advantages

- The Push-in technology COMBI couplings for self-assembly provide solutions that users can implement themselves
- For secure and space-saving accommodation of plug-in contacts in cable ducts and distributor shafts
- Tested for railway applications

Commercial data

Item number	3213345
Packing unit	1 pc
Note	Made to order (non-returnable)
Sales key	BE22
Product key	BE2245
GTIN	4046356993876
Weight per piece (including packing)	6.771 g
Weight per piece (excluding packing)	6.771 g
Customs tariff number	85366990
Country of origin	PL

PPC 1,5/S-NS/3 (1GNYE/2GY) - COMBI coupling



3213345

<https://www.phoenixcontact.com/us/products/3213345>

Technical data

Product properties

Product type	Terminal coupling
Number of positions	3
Pitch	3.5 mm
Area of application	Railway industry
	Machine building
	Plant engineering
Number of connections	1
Number of rows	1
Type	other
Potentials	3

Insulation characteristics

Overvoltage category	III
Degree of pollution	3

Electrical properties

Rated surge voltage	6 kV
Maximum power dissipation for nominal condition	0.56 W

Connection data

Nominal cross section	1.5 mm ²
-----------------------	---------------------

1 level

Stripping length	8 mm
Internal cylindrical gage	A1 / B1
Connection in acc. with standard	IEC 61984
Conductor cross section rigid	0.14 mm ² ... 1.5 mm ²
Cross section AWG	26 ... 14 (converted acc. to IEC)
Conductor cross section flexible	0.14 mm ² ... 1.5 mm ²
Conductor cross section, flexible [AWG]	26 ... 14 (converted acc. to IEC)
Conductor cross-section flexible (ferrule without plastic sleeve)	0.14 mm ² ... 1.5 mm ²
Flexible conductor cross section (ferrule with plastic sleeve)	0.14 mm ² ... 1 mm ²
Nominal current	17.5 A
Maximum load current	17.5 A (with 1.5 mm ² conductor cross section)
Nominal voltage	500 V
Nominal cross section	1.5 mm ²

1 level Connection cross sections directly pluggable

Conductor cross section rigid	0.25 mm ² ... 1.5 mm ²
Conductor cross-section flexible (ferrule without plastic sleeve)	0.34 mm ² ... 1.5 mm ²
Flexible conductor cross section (ferrule with plastic sleeve)	0.34 mm ² ... 1 mm ²

PPC 1,5/S-NS/3 (1GNYE/2GY) - COMBI coupling



3213345

<https://www.phoenixcontact.com/us/products/3213345>

Dimensions

Width	10.5 mm
End cover width	2.2 mm
Height	27.1 mm
Pitch	3.5 mm

Material specifications

Color	green/yellow-gray
Flammability rating according to UL 94	V0
Insulating material group	I
Insulating material	PA
Static insulating material application in cold	-60 °C
Temperature index of insulation material (DIN EN 60216-1 (VDE 0304-21))	130 °C
Relative insulation material temperature index (Elec., UL 746 B)	130 °C
Fire protection for rail vehicles (DIN EN 45545-2) R22	HL 1 - HL 3
Fire protection for rail vehicles (DIN EN 45545-2) R23	HL 1 - HL 3
Fire protection for rail vehicles (DIN EN 45545-2) R24	HL 1 - HL 3
Fire protection for rail vehicles (DIN EN 45545-2) R26	HL 1 - HL 3
Calorimetric heat release NFPA 130 (ASTM E 1354)	28 MJ/kg
Surface flammability NFPA 130 (ASTM E 162)	passed
Specific optical density of smoke NFPA 130 (ASTM E 662)	passed
Smoke gas toxicity NFPA 130 (SMP 800C)	passed

Mechanical properties

Mechanical data

Open side panel	Yes
-----------------	-----

Environmental and real-life conditions

Ambient conditions

Ambient temperature (storage/transport)	-25 °C ... 60 °C (for a short time, not exceeding 24 h, -60 °C to +70 °C)
Ambient temperature (assembly)	-5 °C ... 70 °C
Ambient temperature (actuation)	-5 °C ... 70 °C
Permissible humidity (storage/transport)	30 % ... 70 %

Standards and regulations

Connection in acc. with standard	IEC 61984
----------------------------------	-----------

PPC 1,5/S-NS/3 (1GNYE/2GY) - COMBI coupling

3213345

<https://www.phoenixcontact.com/us/products/3213345>



Drawings

Circuit diagram



PPC 1,5/S-NS/3 (1GNYE/2GY) - COMBI coupling



3213345

<https://www.phoenixcontact.com/us/products/3213345>

Classifications

ECLASS

ECLASS-11.0

27141120

ETIM

ETIM 8.0

EC000897

UNSPSC

UNSPSC 21.0

39121400

PPC 1,5/S-NS/3 (1GNYE/2GY) - COMBI coupling



3213345

<https://www.phoenixcontact.com/us/products/3213345>

Environmental product compliance

China RoHS	Environmentally friendly use period: unlimited = EFUP-e
	No hazardous substances above threshold values

PPC 1,5/S-NS/3 (1GNYE/2GY) - COMBI coupling



3213345

<https://www.phoenixcontact.com/us/products/3213345>

Accessories

D-PPC 1,5/S - End cover

3213690

<https://www.phoenixcontact.com/us/products/3213690>



End cover, depth: 27 mm, width: 3 mm, height: 17.8 mm, color: gray

SZF 0-0,4X2,5 - Screwdriver

1204504

<https://www.phoenixcontact.com/us/products/1204504>



Actuation tool, for ST terminal blocks, also suitable for use as a bladed screwdriver, size: 0.4 x 2.5 x 75 mm, 2-component grip, with non-slip grip

PPC 1,5/S-NS/3 (1GNYE/2GY) - COMBI coupling



3213345

<https://www.phoenixcontact.com/us/products/3213345>

PC - Coding star

3040588

<https://www.phoenixcontact.com/us/products/3040588>



Coding star, 4-section, depth: 6 mm, width: 3 mm, height: 3 mm, color: red

PH 1,5/S/3 - Cable housing

3212756

<https://www.phoenixcontact.com/us/products/3212756>



Cable housing, pitch: 10.5 mm, depth: 36.8 mm, width: 10.5 mm, height: 19.9 mm, number of positions: 3, color: gray

PPC 1,5/S-NS/3 (1GNYE/2GY) - COMBI coupling

3213345

<https://www.phoenixcontact.com/us/products/3213345>

PH 1,5/S/4 - Cable housing

3212769

<https://www.phoenixcontact.com/us/products/3212769>



Cable housing, pitch: 14 mm, depth: 36.8 mm, width: 14 mm, height: 19.9 mm, number of positions: 4, color: gray

PH 1,5/S/5 - Cable housing

3212772

<https://www.phoenixcontact.com/us/products/3212772>



Cable housing, pitch: 17.5 mm, depth: 36.8 mm, width: 17.5 mm, height: 19.9 mm, number of positions: 5, color: gray

PPC 1,5/S-NS/3 (1GNYE/2GY) - COMBI coupling



3213345

<https://www.phoenixcontact.com/us/products/3213345>

PH 1,5/S/6 - Cable housing

3212785

<https://www.phoenixcontact.com/us/products/3212785>



Cable housing, pitch: 21 mm, depth: 36.8 mm, width: 21 mm, height: 19.9 mm, number of positions: 6, color: gray

PH 1,5/S/7 - Cable housing

3212798

<https://www.phoenixcontact.com/us/products/3212798>



Cable housing, pitch: 24.5 mm, depth: 36.8 mm, width: 24.5 mm, height: 19.9 mm, number of positions: 7, color: gray

PPC 1,5/S-NS/3 (1GNYE/2GY) - COMBI coupling

3213345

<https://www.phoenixcontact.com/us/products/3213345>

PH 1,5/S/8 - Cable housing

3212808

<https://www.phoenixcontact.com/us/products/3212808>



Cable housing, pitch: 28 mm, depth: 36.8 mm, width: 28 mm, height: 19.9 mm, number of positions: 8, color: gray

PH 1,5/S/9 - Cable housing

3212811

<https://www.phoenixcontact.com/us/products/3212811>



Cable housing, pitch: 31.5 mm, depth: 36.8 mm, width: 31.5 mm, height: 19.9 mm, number of positions: 9, color: gray

PPC 1,5/S-NS/3 (1GNYE/2GY) - COMBI coupling



3213345

<https://www.phoenixcontact.com/us/products/3213345>

PH 1,5/S/10 - Cable housing

3212824

<https://www.phoenixcontact.com/us/products/3212824>



Cable housing, pitch: 35 mm, depth: 36.8 mm, width: 35 mm, height: 19.9 mm, number of positions: 10, color: gray

PH 1,5/S/11 - Cable housing

3212837

<https://www.phoenixcontact.com/us/products/3212837>



Cable housing, pitch: 38.5 mm, depth: 36.8 mm, width: 38.5 mm, height: 19.9 mm, number of positions: 11, color: gray

PPC 1,5/S-NS/3 (1GNYE/2GY) - COMBI coupling



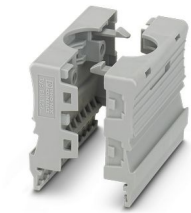
3213345

<https://www.phoenixcontact.com/us/products/3213345>

PH 1,5/S/12 - Cable housing

3212840

<https://www.phoenixcontact.com/us/products/3212840>



Cable housing, pitch: 42 mm, depth: 36.8 mm, width: 42 mm, height: 19.9 mm, number of positions: 12, color: gray

PH 1,5/S/13 - Cable housing

3212853

<https://www.phoenixcontact.com/us/products/3212853>



Cable housing, pitch: 45.5 mm, depth: 36.8 mm, width: 45.5 mm, height: 19.9 mm, number of positions: 13, color: gray

PPC 1,5/S-NS/3 (1GNYE/2GY) - COMBI coupling



3213345

<https://www.phoenixcontact.com/us/products/3213345>

PH 1,5/S/14 - Cable housing

3212866

<https://www.phoenixcontact.com/us/products/3212866>



Cable housing, pitch: 49 mm, depth: 36.8 mm, width: 49 mm, height: 19.9 mm, number of positions: 14, color: gray

ST-BW 0 - Actuation tool

1200135

<https://www.phoenixcontact.com/us/products/1200135>



Actuation tool, for all 1.5 mm² spring cages from PT 1,5/S and FT 1,5/S

PPC 1,5/S-NS/3 (1GNYE/2GY) - COMBI coupling

3213345

<https://www.phoenixcontact.com/us/products/3213345>



AI-S 1 - 8 TQ - Ferrule

1200293

<https://www.phoenixcontact.com/us/products/1200293>

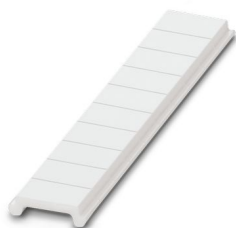


Ferrule, S-Slimline, sleeve length: 8 mm, color: turquoise

ZBF 3,5:UNBEDRUCKT - Zack Marker strip, flat

0829392

<https://www.phoenixcontact.com/us/products/0829392>



Zack Marker strip, flat, Strip, white, unlabeled, can be labeled with: PLOTMARK, CMS-P1-PLOTTER, mounting type: snapped, for terminal block width: 3.5 mm, lettering field size: 3.5 x 5.2 mm, Number of individual labels: 10

PPC 1,5/S-NS/3 (1GNYE/2GY) - COMBI coupling



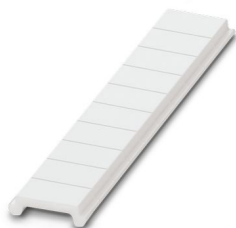
3213345

<https://www.phoenixcontact.com/us/products/3213345>

ZBF 3,5 CUS - Zack Marker strip, flat

0829394

<https://www.phoenixcontact.com/us/products/0829394>



Zack Marker strip, flat, can be ordered: Strip, white, labeled according to customer specifications, mounting type: snap into flat marker groove, for terminal block width: 3.5 mm, lettering field size: 3.5 x 5.2 mm, Number of individual labels: 10

ZBF 3,5,LGS:FORTL.ZAHLEN - Zack Marker strip, flat

0801406

<https://www.phoenixcontact.com/us/products/0801406>



Zack Marker strip, flat, Strip, white, labeled, printed horizontally: consecutive numbers 1 ... 10, 11 ... 20, etc. up to 91 ... 100, mounting type: snapped, for terminal block width: 3.5 mm, lettering field size: 5.15 x 3.5 mm, Number of individual labels: 10

PPC 1,5/S-NS/3 (1GNYE/2GY) - COMBI coupling



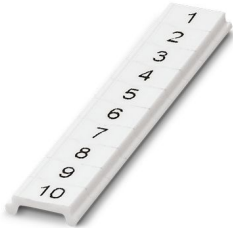
3213345

<https://www.phoenixcontact.com/us/products/3213345>

ZBF 3,5,QR:FORTL.ZAHLEN - Zack Marker strip, flat

0801407

<https://www.phoenixcontact.com/us/products/0801407>



Zack Marker strip, flat, Strip, white, labeled, Printed vertically: consecutive numbers 1 ... 10, 11 ... 20, etc. up to 91 ... 100, mounting type: snapped, for terminal block width: 3.5 mm, lettering field size: 5.15 x 3.5 mm, Number of individual labels: 10

UCT-TMF 3,5 - Marker for terminal blocks

0829486

<https://www.phoenixcontact.com/us/products/0829486>



Marker for terminal blocks, Sheet, white, unlabeled, can be labeled with: TOPMARK NEO, TOPMARK LASER, BLUEMARK ID COLOR, BLUEMARK ID, BLUEMARK CLED, THERMOMARK PRIME, THERMOMARK CARD 2.0, THERMOMARK CARD, mounting type: snapped, for terminal block width: 3.5 mm, lettering field size: 2.7 x 4.7 mm, Number of individual labels: 108

PPC 1,5/S-NS/3 (1GNYE/2GY) - COMBI coupling

3213345

<https://www.phoenixcontact.com/us/products/3213345>



UCT-TMF 3,5 CUS - Marker for terminal blocks

0829644

<https://www.phoenixcontact.com/us/products/0829644>



Marker for terminal blocks, can be ordered: by sheet, white, labeled according to customer specifications, mounting type: snap into flat marker groove, for terminal block width: 3.5 mm, lettering field size: 2.7 x 4.7 mm, Number of individual labels: 108

MPS-MT - Test plug

0201744

<https://www.phoenixcontact.com/us/products/0201744>



Test plug, with solder connection up to 1 mm² conductor cross section, number of positions: 1, color: gray

PPC 1,5/S-NS/3 (1GNYE/2GY) - COMBI coupling



3213345

<https://www.phoenixcontact.com/us/products/3213345>

MPS-IH WH - Insulating sleeve

0201663

<https://www.phoenixcontact.com/us/products/0201663>

Insulating sleeve, color: white



MPS-IH RD - Insulating sleeve

0201676

<https://www.phoenixcontact.com/us/products/0201676>

Insulating sleeve, color: red



PPC 1,5/S-NS/3 (1GNYE/2GY) - COMBI coupling



3213345

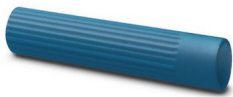
<https://www.phoenixcontact.com/us/products/3213345>

MPS-IH BU - Insulating sleeve

0201689

<https://www.phoenixcontact.com/us/products/0201689>

Insulating sleeve, color: blue



MPS-IH YE - Insulating sleeve

0201692

<https://www.phoenixcontact.com/us/products/0201692>

Insulating sleeve, color: yellow



PPC 1,5/S-NS/3 (1GNYE/2GY) - COMBI coupling



3213345

<https://www.phoenixcontact.com/us/products/3213345>

MPS-IH GN - Insulating sleeve

0201702

<https://www.phoenixcontact.com/us/products/0201702>

Insulating sleeve, color: green



MPS-IH GY - Insulating sleeve

0201728

<https://www.phoenixcontact.com/us/products/0201728>

Insulating sleeve, color: gray



PPC 1,5/S-NS/3 (1GNYE/2GY) - COMBI coupling



3213345

<https://www.phoenixcontact.com/us/products/3213345>

MPS-IH BK - Insulating sleeve

0201731

<https://www.phoenixcontact.com/us/products/0201731>

Insulating sleeve, color: black



PP-H 1,5/S/1 - Plug

3212484

<https://www.phoenixcontact.com/us/products/3212484>



Plug, nom. voltage: 500 V, nominal current: 17.5 A, number of connections: 1, number of positions: 1, connection method: Push-in connection, 1 level, Rated cross section: 1.5 mm², cross section: 0.14 mm² - 1.5 mm², mounting type: Plug-in mounting, color: gray

PPC 1,5/S-NS/3 (1GNYE/2GY) - COMBI coupling



3213345

<https://www.phoenixcontact.com/us/products/3213345>

PP-H 1,5/S/1 BU - Plug

3212497

<https://www.phoenixcontact.com/us/products/3212497>



Plug, nom. voltage: 500 V, nominal current: 17.5 A, number of connections: 1, number of positions: 1, connection method: Push-in connection, 1 level, Rated cross section: 1.5 mm², cross section: 0.14 mm² - 1.5 mm², color: blue

PP-H 1,5/S/1 GNYE - Plug

3212507

<https://www.phoenixcontact.com/us/products/3212507>



Plug, nom. voltage: 500 V, nominal current: 17.5 A, number of connections: 1, number of positions: 1, connection method: Push-in connection, 1 level, Rated cross section: 1.5 mm², cross section: 0.14 mm² - 1.5 mm², color: green-yellow

PPC 1,5/S-NS/3 (1GNYE/2GY) - COMBI coupling

3213345

<https://www.phoenixcontact.com/us/products/3213345>

PP-H 1,5/S/2 - Plug

3212510

<https://www.phoenixcontact.com/us/products/3212510>



Plug, nom. voltage: 500 V, nominal current: 17.5 A, number of connections: 2, number of positions: 2, connection method: Push-in connection, 1 level, Rated cross section: 1.5 mm², cross section: 0.14 mm² - 1.5 mm², mounting type: Plug-in mounting, color: gray

PP-H 1,5/S/3 - Plug

3212523

<https://www.phoenixcontact.com/us/products/3212523>



Plug, nom. voltage: 500 V, nominal current: 17.5 A, number of connections: 3, number of positions: 3, connection method: Push-in connection, 1 level, Rated cross section: 1.5 mm², cross section: 0.14 mm² - 1.5 mm², mounting type: Plug-in mounting, color: gray

PPC 1,5/S-NS/3 (1GNYE/2GY) - COMBI coupling

3213345

<https://www.phoenixcontact.com/us/products/3213345>

PP-H 1,5/S/4 - Plug

3212536

<https://www.phoenixcontact.com/us/products/3212536>



Plug, nom. voltage: 500 V, nominal current: 17.5 A, number of connections: 4, number of positions: 4, connection method: Push-in connection, 1 level, Rated cross section: 1.5 mm², cross section: 0.14 mm² - 1.5 mm², mounting type: Plug-in mounting, color: gray

PP-H 1,5/S/5 - Plug

3212549

<https://www.phoenixcontact.com/us/products/3212549>



Plug, nom. voltage: 500 V, nominal current: 17.5 A, number of connections: 5, number of positions: 5, connection method: Push-in connection, 1 level, Rated cross section: 1.5 mm², cross section: 0.14 mm² - 1.5 mm², mounting type: Plug-in mounting, color: gray

PPC 1,5/S-NS/3 (1GNYE/2GY) - COMBI coupling

3213345

<https://www.phoenixcontact.com/us/products/3213345>

PP-H 1,5/S/6 - Plug

3212552

<https://www.phoenixcontact.com/us/products/3212552>



Plug, nom. voltage: 500 V, nominal current: 17.5 A, number of connections: 6, number of positions: 6, connection method: Push-in connection, 1 level, Rated cross section: 1.5 mm², cross section: 0.14 mm² - 1.5 mm², mounting type: Plug-in mounting, color: gray

PP-H 1,5/S/7 - Plug

3212565

<https://www.phoenixcontact.com/us/products/3212565>



Plug, nom. voltage: 500 V, nominal current: 17.5 A, number of connections: 7, number of positions: 7, connection method: Push-in connection, 1 level, Rated cross section: 1.5 mm², cross section: 0.14 mm² - 1.5 mm², color: gray

PPC 1,5/S-NS/3 (1GNYE/2GY) - COMBI coupling



3213345

<https://www.phoenixcontact.com/us/products/3213345>

PP-H 1,5/S/8 - Plug

3212578

<https://www.phoenixcontact.com/us/products/3212578>



Plug, nom. voltage: 500 V, nominal current: 17.5 A, number of connections: 8, number of positions: 8, connection method: Push-in connection, 1 level, Rated cross section: 1.5 mm², cross section: 0.14 mm² - 1.5 mm², mounting type: Plug-in mounting, color: gray

PP-H 1,5/S/9 - Plug

3212581

<https://www.phoenixcontact.com/us/products/3212581>



Plug, nom. voltage: 500 V, nominal current: 17.5 A, number of connections: 9, number of positions: 9, connection method: Push-in connection, 1 level, Rated cross section: 1.5 mm², cross section: 0.14 mm² - 1.5 mm², color: gray

PPC 1,5/S-NS/3 (1GNYE/2GY) - COMBI coupling



3213345

<https://www.phoenixcontact.com/us/products/3213345>

PP-H 1,5/S/10 - Plug

3212594

<https://www.phoenixcontact.com/us/products/3212594>



Plug, nom. voltage: 500 V, nominal current: 17.5 A, number of connections: 10, number of positions: 10, connection method: Push-in connection, 1 level, Rated cross section: 1.5 mm², cross section: 0.14 mm² - 1.5 mm², color: gray

PP-H 1,5/S/11 - Plug

3212604

<https://www.phoenixcontact.com/us/products/3212604>



Plug, nom. voltage: 500 V, nominal current: 17.5 A, number of connections: 11, number of positions: 11, connection method: Push-in connection, 1 level, Rated cross section: 1.5 mm², cross section: 0.14 mm² - 1.5 mm², color: gray

PPC 1,5/S-NS/3 (1GNYE/2GY) - COMBI coupling



3213345

<https://www.phoenixcontact.com/us/products/3213345>

PP-H 1,5/S/12 - Plug

3212617

<https://www.phoenixcontact.com/us/products/3212617>



Plug, nom. voltage: 500 V, nominal current: 17.5 A, number of connections: 12, number of positions: 12, connection method: Push-in connection, 1 level, Rated cross section: 1.5 mm², cross section: 0.14 mm² - 1.5 mm², color: gray

PP-H 1,5/S/13 - Plug

3212620

<https://www.phoenixcontact.com/us/products/3212620>



Plug, nom. voltage: 500 V, nominal current: 17.5 A, number of connections: 13, number of positions: 13, connection method: Push-in connection, 1 level, Rated cross section: 1.5 mm², cross section: 0.14 mm² - 1.5 mm², color: gray

PPC 1,5/S-NS/3 (1GNYE/2GY) - COMBI coupling



3213345

<https://www.phoenixcontact.com/us/products/3213345>

PP-H 1,5/S/14 - Plug

3212633

<https://www.phoenixcontact.com/us/products/3212633>



Plug, nom. voltage: 500 V, nominal current: 17.5 A, number of connections: 14, number of positions: 14, connection method: Push-in connection, 1 level, Rated cross section: 1.5 mm², cross section: 0.14 mm² - 1.5 mm², color: gray

PP-H 1,5/S/15 - Plug

3212646

<https://www.phoenixcontact.com/us/products/3212646>



Plug, nom. voltage: 500 V, nominal current: 17.5 A, number of connections: 15, number of positions: 15, connection method: Push-in connection, 1 level, Rated cross section: 1.5 mm², cross section: 0.14 mm² - 1.5 mm², color: gray

PPC 1,5/S-NS/3 (1GNYE/2GY) - COMBI coupling



3213345

<https://www.phoenixcontact.com/us/products/3213345>

PP-H 1,5/S/1-L - Plug

3212659

<https://www.phoenixcontact.com/us/products/3212659>



Plug, nom. voltage: 500 V, nominal current: 17.5 A, number of connections: 1, number of positions: 1, connection method: Push-in connection, 1 level, Rated cross section: 1.5 mm², cross section: 0.14 mm² - 1.5 mm², color: gray

PP-H 1,5/S/1-L BU - Plug

3212662

<https://www.phoenixcontact.com/us/products/3212662>



Plug, nom. voltage: 500 V, nominal current: 17.5 A, number of connections: 1, number of positions: 1, connection method: Push-in connection, 1 level, Rated cross section: 1.5 mm², cross section: 0.14 mm² - 1.5 mm², color: blue

PPC 1,5/S-NS/3 (1GNYE/2GY) - COMBI coupling



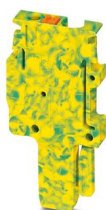
3213345

<https://www.phoenixcontact.com/us/products/3213345>

PP-H 1,5/S/1-L GNYE - Plug

3212675

<https://www.phoenixcontact.com/us/products/3212675>



Plug, nom. voltage: 500 V, nominal current: 17.5 A, number of connections: 1, number of positions: 1, connection method: Push-in connection, 1 level, Rated cross section: 1.5 mm², cross section: 0.14 mm² - 1.5 mm², color: green-yellow

PP-H 1,5/S/1-M - Plug

3212688

<https://www.phoenixcontact.com/us/products/3212688>



Plug, nom. voltage: 500 V, nominal current: 17.5 A, number of connections: 1, number of positions: 1, connection method: Push-in connection, 1 level, Rated cross section: 1.5 mm², cross section: 0.14 mm² - 1.5 mm², color: gray

PPC 1,5/S-NS/3 (1GNYE/2GY) - COMBI coupling



3213345

<https://www.phoenixcontact.com/us/products/3213345>

PP-H 1,5/S/1-M BU - Plug

3212691

<https://www.phoenixcontact.com/us/products/3212691>



Plug, nom. voltage: 500 V, nominal current: 17.5 A, number of connections: 1, number of positions: 1, connection method: Push-in connection, 1 level, Rated cross section: 1.5 mm², cross section: 0.14 mm² - 1.5 mm², color: blue

PP-H 1,5/S/1-M GNYE - Plug

3212701

<https://www.phoenixcontact.com/us/products/3212701>



Plug, nom. voltage: 500 V, nominal current: 17.5 A, number of connections: 1, number of positions: 1, connection method: Push-in connection, 1 level, Rated cross section: 1.5 mm², cross section: 0.14 mm² - 1.5 mm², color: green-yellow

PPC 1,5/S-NS/3 (1GNYE/2GY) - COMBI coupling



3213345

<https://www.phoenixcontact.com/us/products/3213345>

PP-H 1,5/S/1-R - Plug

3212714

<https://www.phoenixcontact.com/us/products/3212714>



Plug, nom. voltage: 500 V, nominal current: 17.5 A, number of connections: 1, number of positions: 1, connection method: Push-in connection, 1 level, Rated cross section: 1.5 mm², cross section: 0.14 mm² - 1.5 mm², color: gray

PP-H 1,5/S/1-R BU - Plug

3212727

<https://www.phoenixcontact.com/us/products/3212727>



Plug, nom. voltage: 500 V, nominal current: 17.5 A, number of connections: 1, number of positions: 1, connection method: Push-in connection, 1 level, Rated cross section: 1.5 mm², cross section: 0.14 mm² - 1.5 mm², color: blue

PPC 1,5/S-NS/3 (1GNYE/2GY) - COMBI coupling



3213345

<https://www.phoenixcontact.com/us/products/3213345>

PP-H 1,5/S/1-R GNYE - Plug

3212730

<https://www.phoenixcontact.com/us/products/3212730>



Plug, nom. voltage: 500 V, nominal current: 17.5 A, number of connections: 1, number of positions: 1, connection method: Push-in connection, 1 level, Rated cross section: 1.5 mm², cross section: 0.14 mm² - 1.5 mm², color: green-yellow

PZ 1,5/S/2 - Strain relief

3212918

<https://www.phoenixcontact.com/us/products/3212918>



Strain relief, width: 6.8 mm, height: 44.5 mm, number of positions: 2, color: black

PPC 1,5/S-NS/3 (1GNYE/2GY) - COMBI coupling



3213345

<https://www.phoenixcontact.com/us/products/3213345>

PRZ 1,5/S - Latching

3212905

<https://www.phoenixcontact.com/us/products/3212905>



Latching, length: 59 mm, color: orange

PR 1,5/S/2 - Latching

3212895

<https://www.phoenixcontact.com/us/products/3212895>



Latching, width: 6.8 mm, height: 28.9 mm, number of positions: 2, color: orange

PPC 1,5/S-NS/3 (1GNYE/2GY) - COMBI coupling



3213345

<https://www.phoenixcontact.com/us/products/3213345>

PR 1,5/S - Latching

3212882

<https://www.phoenixcontact.com/us/products/3212882>



Latching, width: 3.3 mm, height: 28.9 mm, number of positions: 1, color: orange

Phoenix Contact 2024 © - all rights reserved

<https://www.phoenixcontact.com>

Phoenix Contact USA
586 Fulling Mill Road
Middletown, PA 17057, United States
(+717) 944-1300
info@phoenixcon.com