

PTPOWER 150-3L/N/FE-F - High-current terminal block



3215036

<https://www.phoenixcontact.com/us/products/3215036>

Please be informed that the data shown in this PDF document is generated from our online catalog. Please find the complete data in the user documentation. Our general terms of use for downloads are valid.



High-current terminal block, Blocked, nom. voltage: 1500 V, nominal current: 309 A, number of connections: 10, number of positions: 5, connection method: PowerTurn connection, 1 level, cross section: 50 mm² - 150 mm², mounting type: direct screw connection, color: gray/blue/black-yellow

Commercial data

| | |
|--------------------------------------|--------------------------------|
| Item number | 3215036 |
| Packing unit | 1 pc |
| Note | Made to order (non-returnable) |
| Sales key | BE22 |
| Product key | BE2211 |
| Catalog page | Page 131 (C-1-2017) |
| GTIN | 4046356903547 |
| Weight per piece (including packing) | 1,639.4 g |
| Weight per piece (excluding packing) | 1,639.4 g |
| Customs tariff number | 85369010 |
| Country of origin | PL |

PTPOWER 150-3L/N/FE-F - High-current terminal block



3215036

<https://www.phoenixcontact.com/us/products/3215036>

Technical data

Product properties

| | |
|-----------------------|-----------------------------|
| Product type | High current terminal block |
| Number of positions | 5 |
| Pitch | 31 mm |
| Number of connections | 10 |
| Number of rows | 1 |
| Potentials | 5 |

Insulation characteristics

| | |
|----------------------|-----|
| Overvoltage category | III |
| Degree of pollution | 3 |

Electrical properties

| | |
|---------------------|------|
| Rated surge voltage | 8 kV |
|---------------------|------|

Connection data

| | |
|---------------------------------|---------------------|
| Number of connections per level | 10 |
| Nominal cross section | 150 mm ² |

1 level

| | |
|--|--|
| Stripping length | 40 mm |
| Internal cylindrical gage | B14 |
| Connection in acc. with standard | IEC 60947-7-1 |
| Conductor cross section rigid | 50 mm ² ... 150 mm ² |
| Cross section AWG | 1/0 ... 300 kcmil (converted acc. to IEC) |
| Conductor cross section flexible | 50 mm ² ... 150 mm ² |
| Conductor cross section, flexible [AWG] | 1/0 ... 300 kcmil (converted acc. to IEC) |
| Conductor cross-section flexible (ferrule without plastic sleeve) | 50 mm ² ... 95 mm ² |
| Flexible conductor cross section (ferrule with plastic sleeve) | 50 mm ² ... 95 mm ² |
| Cross-section with insertion bridge, rigid | 50 mm ² ... 150 mm ² |
| Cross-section with insertion bridge, flexible | 50 mm ² ... 150 mm ² |
| Cross-section with insertion bridge, flexible, with ferrule without plastic sleeve | 50 mm ² ... 95 mm ² |
| Cross-section with insertion bridge, flexible, with ferrule with plastic sleeve | 50 mm ² ... 95 mm ² |
| Nominal current | 309 A |
| Maximum load current | 309 A (with 150 mm ² conductor cross section) |
| Nominal voltage | 1500 V DC 1000 V AC |

1 level Connection cross sections directly pluggable

| | |
|---|--|
| Conductor cross section rigid | 50 mm ² ... 150 mm ² |
| Conductor cross-section flexible (ferrule without plastic sleeve) | 50 mm ² ... 95 mm ² |

PTPOWER 150-3L/N/FE-F - High-current terminal block



3215036

<https://www.phoenixcontact.com/us/products/3215036>

| | |
|--|---|
| Flexible conductor cross section (ferrule with plastic sleeve) | 50 mm ² ... 95 mm ² |
|--|---|

Dimensions

| | |
|---------------------|--|
| Dimensional drawing |  |
| Width | 31 mm |
| Height | 108.3 mm |
| Drill hole spacing | 137.2 mm |
| Hole diameter | 6.5 mm |
| Pitch | 31 mm |

Material specifications

| | |
|---|------------------------|
| Color | gray/blue/black-yellow |
| Flammability rating according to UL 94 | V0 |
| Insulating material group | I |
| Insulating material | PA |
| Static insulating material application in cold | -60 °C |
| Temperature index of insulation material (DIN EN 60216-1 (VDE 0304-21)) | 125 °C |
| Relative insulation material temperature index (Elec., UL 746 B) | 130 °C |
| Fire protection for rail vehicles (DIN EN 45545-2) R22 | HL 1 - HL 3 |
| Fire protection for rail vehicles (DIN EN 45545-2) R23 | HL 1 - HL 3 |
| Fire protection for rail vehicles (DIN EN 45545-2) R24 | HL 1 - HL 3 |
| Fire protection for rail vehicles (DIN EN 45545-2) R26 | HL 1 - HL 3 |
| Calorimetric heat release NFPA 130 (ASTM E 1354) | 27,5 MJ/kg |
| Surface flammability NFPA 130 (ASTM E 162) | passed |
| Specific optical density of smoke NFPA 130 (ASTM E 662) | passed |
| Smoke gas toxicity NFPA 130 (SMP 800C) | passed |

Mechanical properties

| | |
|--------------------|----------|
| Mechanical data | |
| Open side panel | No |
| Technical data | |
| Drill hole spacing | 137.2 mm |

Standards and regulations

| | |
|----------------------------------|---------------|
| Connection in acc. with standard | IEC 60947-7-1 |
|----------------------------------|---------------|

Mounting

| | |
|---------------|-------------------------|
| Mounting type | direct screw connection |
|---------------|-------------------------|

PPOWER 150-3L/N/FE-F - High-current terminal block

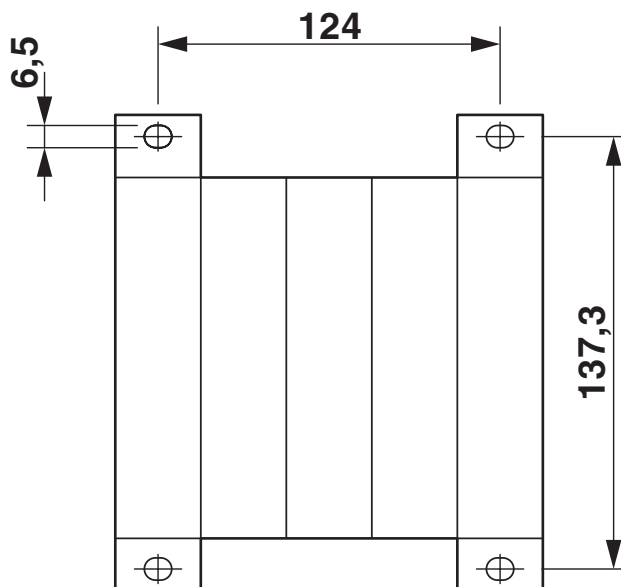


3215036

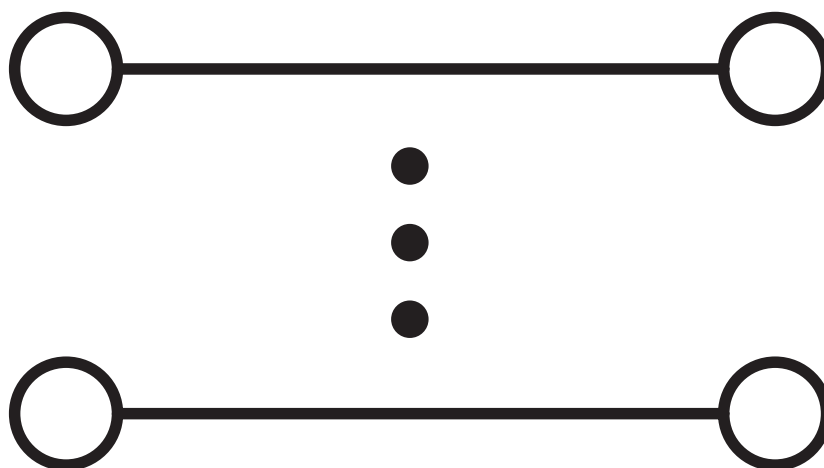
<https://www.phoenixcontact.com/us/products/3215036>

Drawings

Dimensional drawing



Circuit diagram



PPOWER 150-3L/N/FE-F - High-current terminal block



3215036

<https://www.phoenixcontact.com/us/products/3215036>

Environmental product compliance

| | |
|------------|---|
| China RoHS | Environmentally friendly use period: unlimited = EFUP-e |
| | No hazardous substances above threshold values |

PTPOWER 150-3L/N/FE-F - High-current terminal block



3215036

<https://www.phoenixcontact.com/us/products/3215036>

Accessories

i Note: Applying some accessories below might limit this product.

EB 2-31/PT - Insertion bridge

3215057

<https://www.phoenixcontact.com/us/products/3215057>

Insertion bridge, pitch: 31 mm, number of positions: 2, length: 78 mm, color: red



i Max. current carrying capacity: 232 A

EB 3-31/PT - Insertion bridge

3215058

<https://www.phoenixcontact.com/us/products/3215058>

Insertion bridge, pitch: 31 mm, number of positions: 3, length: 78 mm, color: red



i Max. current carrying capacity: 232 A

PTPOWER 150-3L/N/FE-F - High-current terminal block



3215036

<https://www.phoenixcontact.com/us/products/3215036>

AGK 10-PTPOWER - Pick-off terminal block

3260145

<https://www.phoenixcontact.com/us/products/3260145>



Pick-off terminal block, nom. voltage: 1500 V, nominal current: 57 A, number of connections: 2, connection method: Push-in connection, 1 level, Rated cross section: 10 mm², cross section: 0.5 mm² - 16 mm², mounting type: on base element, color: gray

AGK 10-PTPOWER BU - Pick-off terminal block

3260148

<https://www.phoenixcontact.com/us/products/3260148>



Pick-off terminal block, nom. voltage: 1500 V, nominal current: 57 A, number of connections: 2, connection method: Push-in connection, 1 level, Rated cross section: 10 mm², cross section: 0.5 mm² - 16 mm², mounting type: on base element, color: blue

PTPOWER 150-3L/N/FE-F - High-current terminal block

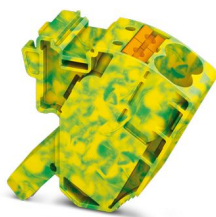
3215036

<https://www.phoenixcontact.com/us/products/3215036>

AGK 10-PTPOWER GN/YE - Pick-off terminal block

3260151

<https://www.phoenixcontact.com/us/products/3260151>



Pick-off terminal block, nom. voltage: 1500 V, nominal current: 57 A, number of connections: 2, connection method: Push-in connection, 1 level, Rated cross section: 10 mm², cross section: 0.5 mm² - 16 mm², mounting type: on base element, color: green/yellow

AGK 10-PTPOWER BK/YE - Pick-off terminal block

3260154

<https://www.phoenixcontact.com/us/products/3260154>



Pick-off terminal block, nom. voltage: 1500 V, nominal current: 57 A, number of connections: 2, connection method: Push-in connection, 1 level, Rated cross section: 10 mm², cross section: 0.5 mm² - 16 mm², mounting type: on base element, color: black/yellow

PTPOWER 150-3L/N/FE-F - High-current terminal block



3215036

<https://www.phoenixcontact.com/us/products/3215036>

SZF 3-1,0X5,5 - Screwdriver

1206612

<https://www.phoenixcontact.com/us/products/1206612>



Actuation tool, for ST terminal blocks, also suitable for use as a bladed screwdriver, size: 1.0 x 5.5 x 150 mm, 2-component grip, with non-slip grip

NS 35/15 PERF 2000MM - DIN rail perforated

1201730

<https://www.phoenixcontact.com/us/products/1201730>



DIN rail perforated, Pack of 25 (50 m), similar to EN 60715, material: Steel, galvanized, passivated with a thick layer, Standard profile, color: silver

PTPOWER 150-3L/N/FE-F - High-current terminal block



3215036

<https://www.phoenixcontact.com/us/products/3215036>

NS 35/15 UNPERF 2000MM - DIN rail, unperforated

1201714

<https://www.phoenixcontact.com/us/products/1201714>



DIN rail, unperforated, Pack of 25 (50 m), similar to EN 60715, material: Steel, galvanized, passivated with a thick layer, Standard profile, color: silver

NS 35/15 WH PERF 2000MM - DIN rail perforated

0806602

<https://www.phoenixcontact.com/us/products/0806602>



DIN rail perforated, Pack of 25 (50 m), similar to EN 60715, material: Steel, Galvanized, white passivated, Standard profile, color: white

PTPOWER 150-3L/N/FE-F - High-current terminal block



3215036

<https://www.phoenixcontact.com/us/products/3215036>

NS 35/15 WH UNPERF 2000MM-VPE 10 - DIN rail, unperforated

1204135

<https://www.phoenixcontact.com/us/products/1204135>



DIN rail, unperforated, Pack of 10 (20 m), similar to EN 60715, material: Steel, Galvanized, white passivated, Standard profile, color: silver

NS 35/15 AL UNPERF 2000MM - DIN rail, unperforated

1201756

<https://www.phoenixcontact.com/us/products/1201756>



DIN rail, unperforated, similar to EN 60715, material: Aluminum, uncoated, Standard profile, color: silver

PTPOWER 150-3L/N/FE-F - High-current terminal block



3215036

<https://www.phoenixcontact.com/us/products/3215036>

NS 35/15 ZN PERF 2000MM - DIN rail perforated

1206599

<https://www.phoenixcontact.com/us/products/1206599>



DIN rail perforated, Pack of 25 (50 m), similar to EN 60715, material: Steel, galvanized, Standard profile, color: silver

NS 35/15 ZN UNPERF 2000MM - DIN rail, unperforated

1206586

<https://www.phoenixcontact.com/us/products/1206586>



DIN rail, unperforated, Pack of 25 (50 m), similar to EN 60715, material: Steel, galvanized, Standard profile, color: silver

PTPOWER 150-3L/N/FE-F - High-current terminal block



3215036

<https://www.phoenixcontact.com/us/products/3215036>

NS 35/15 CU UNPERF 2000MM-VPE 10 - DIN rail, unperforated

1201895

<https://www.phoenixcontact.com/us/products/1201895>



DIN rail, unperforated, Pack of 10 (20 m), similar to EN 60715, material: Copper, uncoated, Standard profile, color: copper-colored

NS 35/15 CAP - End cap

1206573

<https://www.phoenixcontact.com/us/products/1206573>

DIN rail end piece, for DIN rail NS 35/15



PTPOWER 150-3L/N/FE-F - High-current terminal block



3215036

<https://www.phoenixcontact.com/us/products/3215036>

E/AL-NS 35 - End bracket

1201662

<https://www.phoenixcontact.com/us/products/1201662>



End clamp, for end support of UKH 50 to UKH 240, is pushed onto DIN rail NS 35 and fixed with 2 screws, width: 10 mm, color: aluminum

TMT (EX9,5)R - Marker for terminal blocks

0828295

<https://www.phoenixcontact.com/us/products/0828295>



Marker for terminal blocks, Roll, white, unlabeled, can be labeled with: THERMOMARK E.300 (D)/600 (D), THERMOMARK ROLL 2.0, THERMOMARK ROLL, THERMOMARK ROLL X1, THERMOMARK ROLLMASTER 300/600, THERMOMARK X1.2, mounting type: snapped, snap into tall marker groove, for terminal block width: 30000 mm, lettering field size: 9.5 x 50000 mm, Number of individual labels: 1

PTPOWER 150-3L/N/FE-F - High-current terminal block



3215036

<https://www.phoenixcontact.com/us/products/3215036>

US-TM 100 - Marker for terminal blocks

0829255

<https://www.phoenixcontact.com/us/products/0829255>



Marker for terminal blocks, Card, white, unlabeled, can be labeled with: BLUEMARK ID COLOR, BLUEMARK ID, THERMOMARK PRIME, THERMOMARK CARD 2.0, THERMOMARK CARD, mounting type: snapped, lettering field size: 104 x 9.8 mm, Number of individual labels: 13

ZB 10:UNBEDRUCKT - Zack marker strip

1053001

<https://www.phoenixcontact.com/us/products/1053001>



Zack marker strip, Strip, white, unlabeled, can be labeled with: PLOTMARK, CMS-P1-PLOTTER, mounting type: snapped, for terminal block width: 10.2 mm, lettering field size: 10.5 x 10.15 mm, Number of individual labels: 10

PTPOWER 150-3L/N/FE-F - High-current terminal block



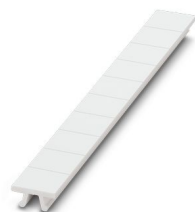
3215036

<https://www.phoenixcontact.com/us/products/3215036>

ZB 10 CUS - Zack marker strip

0824941

<https://www.phoenixcontact.com/us/products/0824941>



Zack marker strip, can be ordered: Strip, white, labeled according to customer specifications, mounting type: snap into tall marker groove, for terminal block width: 10.2 mm, lettering field size: 10,15 x 10,5 mm, Number of individual labels: 10

ZB10,LGS:FORTL.ZAHLEN - Zack marker strip

1053014

<https://www.phoenixcontact.com/us/products/1053014>



Zack marker strip, Strip, white, labeled, can be labeled with: CMS-P1-PLOTTER, printed horizontally: consecutive numbers 1 ... 10, 11 ... 20, etc. up to 91 ... 100, mounting type: snapped, for terminal block width: 10.2 mm, lettering field size: 10,15 x 10,5 mm, Number of individual labels: 10

PTPOWER 150-3L/N/FE-F - High-current terminal block



3215036

<https://www.phoenixcontact.com/us/products/3215036>

ZB10,QR:FORTL.ZAHLEN - Zack marker strip

1053027

<https://www.phoenixcontact.com/us/products/1053027>

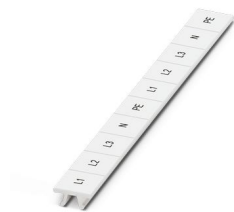


Zack marker strip, Strip, white, labeled, can be labeled with: CMS-P1-PLOTTER, Printed vertically: consecutive numbers 1 ... 10, 11 ... 20, etc. up to 91 ... 100, mounting type: snapped, for terminal block width: 10.2 mm, lettering field size: 10,15 x 10,5 mm, Number of individual labels: 10

ZB10,LGS:L1-N,PE - Marker for terminal blocks

1053412

<https://www.phoenixcontact.com/us/products/1053412>



Marker for terminal blocks, Strip, white, labeled, can be labeled with: CMS-P1-PLOTTER, horizontal: L1, L2, L3, N, PE, L1, L2, L3, N, PE, mounting type: snapped, for terminal block width: 10.2 mm, lettering field size: 10,15 x 10,5 mm, Number of individual labels: 10

PTPOWER 150-3L/N/FE-F - High-current terminal block



3215036

<https://www.phoenixcontact.com/us/products/3215036>

ZB10,LGS:U-N - Marker for terminal blocks

1053438

<https://www.phoenixcontact.com/us/products/1053438>



Marker for terminal blocks, Strip, white, labeled, can be labeled with: CMS-P1-PLOTTER, horizontal: U, V, W, N, GND, U, V, W, N, GND, mounting type: snapped, for terminal block width: 10.2 mm, lettering field size: 10,15 x 10,5 mm, Number of individual labels: 10

UC-TM 10 - Marker for terminal blocks

0818069

<https://www.phoenixcontact.com/us/products/0818069>



Marker for terminal blocks, Sheet, white, unlabeled, can be labeled with: BLUEMARK ID COLOR, BLUEMARK ID, BLUEMARK CLED, PLOTMARK, CMS-P1-PLOTTER, mounting type: snapped, for terminal block width: 10.2 mm, lettering field size: 9.6 x 10.5 mm, Number of individual labels: 48

PTPOWER 150-3L/N/FE-F - High-current terminal block



3215036

<https://www.phoenixcontact.com/us/products/3215036>

UC-TM 10 CUS - Marker for terminal blocks

0824605

<https://www.phoenixcontact.com/us/products/0824605>



Marker for terminal blocks, can be ordered: by sheet, white, labeled according to customer specifications, mounting type: snap into tall marker groove, for terminal block width: 10.2 mm, lettering field size: 9.6 x 10.5 mm, Number of individual labels: 48

UCT-TM 10 - Marker for terminal blocks

0829142

<https://www.phoenixcontact.com/us/products/0829142>



Marker for terminal blocks, Sheet, white, unlabeled, can be labeled with: TOPMARK NEO, TOPMARK LASER, BLUEMARK ID COLOR, BLUEMARK ID, BLUEMARK CLED, THERMOMARK PRIME, THERMOMARK CARD 2.0, THERMOMARK CARD, mounting type: snapped, for terminal block width: 10.2 mm, lettering field size: 8.9 x 9.6 mm, Number of individual labels: 36

PTPOWER 150-3L/N/FE-F - High-current terminal block



3215036

<https://www.phoenixcontact.com/us/products/3215036>

UCT-TM 10 CUS - Marker for terminal blocks

0829623

<https://www.phoenixcontact.com/us/products/0829623>



Marker for terminal blocks, can be ordered: by sheet, white, labeled according to customer specifications, mounting type: snap into tall marker groove, for terminal block width: 10.2 mm, lettering field size: 8.9 x 9.6 mm, Number of individual labels: 36

ZB 20,3:UNPRINTED - Zack marker strip

0820248

<https://www.phoenixcontact.com/us/products/0820248>



Zack marker strip, Strip, white, unlabeled, can be labeled with: PLOTMARK, CMS-P1-PLOTTER, mounting type: snapped, for terminal block width: 20.3 mm, lettering field size: 10.5 x 20.25 mm, Number of individual labels: 5

PTPOWER 150-3L/N/FE-F - High-current terminal block



3215036

<https://www.phoenixcontact.com/us/products/3215036>

ZB 20,3 CUS - Zack marker strip

0824948

<https://www.phoenixcontact.com/us/products/0824948>



Zack marker strip, can be ordered: Strip, white, labeled according to customer specifications, mounting type: snap into tall marker groove, for terminal block width: 20.3 mm, lettering field size: 10.5 x 20.25 mm, Number of individual labels: 5

MPS-MT - Test plug

0201744

<https://www.phoenixcontact.com/us/products/0201744>



Test plug, with solder connection up to 1 mm² conductor cross section, number of positions: 1, color: gray

PTPOWER 150-3L/N/FE-F - High-current terminal block



3215036

<https://www.phoenixcontact.com/us/products/3215036>

MPS-IH WH - Insulating sleeve

0201663

<https://www.phoenixcontact.com/us/products/0201663>

Insulating sleeve, color: white



MPS-IH RD - Insulating sleeve

0201676

<https://www.phoenixcontact.com/us/products/0201676>

Insulating sleeve, color: red



PTPOWER 150-3L/N/FE-F - High-current terminal block



3215036

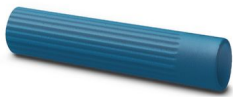
<https://www.phoenixcontact.com/us/products/3215036>

MPS-IH BU - Insulating sleeve

0201689

<https://www.phoenixcontact.com/us/products/0201689>

Insulating sleeve, color: blue



MPS-IH YE - Insulating sleeve

0201692

<https://www.phoenixcontact.com/us/products/0201692>

Insulating sleeve, color: yellow



PTPOWER 150-3L/N/FE-F - High-current terminal block



3215036

<https://www.phoenixcontact.com/us/products/3215036>

MPS-IH GN - Insulating sleeve

0201702

<https://www.phoenixcontact.com/us/products/0201702>

Insulating sleeve, color: green



MPS-IH GY - Insulating sleeve

0201728

<https://www.phoenixcontact.com/us/products/0201728>

Insulating sleeve, color: gray



PTPOWER 150-3L/N/FE-F - High-current terminal block



3215036

<https://www.phoenixcontact.com/us/products/3215036>

MPS-IH BK - Insulating sleeve

0201731

<https://www.phoenixcontact.com/us/products/0201731>

Insulating sleeve, color: black



PROJECT COMPLETE - Software

1050453

<https://www.phoenixcontact.com/us/products/1050453>



Intuitive planning and marking software for configuring terminal strips and for professional marking of marking materials for terminal blocks, conductors, cables, devices, and systems. The software is available for download

PTPOWER 150-3L/N/FE-F - High-current terminal block



3215036

<https://www.phoenixcontact.com/us/products/3215036>

A 25 -40 - Ferrule

3241238

<https://www.phoenixcontact.com/us/products/3241238>



Ferrule, color: silver

A 35 -40 - Ferrule

3241239

<https://www.phoenixcontact.com/us/products/3241239>



Ferrule, color: silver

PTPOWER 150-3L/N/FE-F - High-current terminal block



3215036

<https://www.phoenixcontact.com/us/products/3215036>

A 50 -40 - Ferrule

3241240

<https://www.phoenixcontact.com/us/products/3241240>



Ferrule, color: silver

A 70 -40 - Ferrule

3241241

<https://www.phoenixcontact.com/us/products/3241241>



Ferrule, color: silver

PTPOWER 150-3L/N/FE-F - High-current terminal block



3215036

<https://www.phoenixcontact.com/us/products/3215036>

A 95 -40 - Ferrule

3241242

<https://www.phoenixcontact.com/us/products/3241242>



Ferrule, color: silver

CRIMPFOX 50R - Crimping pliers

1212041

<https://www.phoenixcontact.com/us/products/1212041>



Crimping pliers, for ferrules without insulating collar according to DIN 46228 Part 1 and ferrules with insulating collar according to DIN 46228 Part 4, 35 mm² ... 50 mm², lateral entry, WM crimp

PTPOWER 150-3L/N/FE-F - High-current terminal block



3215036

<https://www.phoenixcontact.com/us/products/3215036>

CRIMPFOX-M - Crimping pliers

1212072

<https://www.phoenixcontact.com/us/products/1212072>



Basic pliers, for accommodating dies for a wide range of type of contacts

CRIMPFOX-C120 - Crimping pliers

1212318

<https://www.phoenixcontact.com/us/products/1212318>



Basic pliers, for accommodating dies for a wide range of type of contacts up to 120 mm²

Phoenix Contact 2024 © - all rights reserved
<https://www.phoenixcontact.com>

Phoenix Contact USA
586 Fulling Mill Road
Middletown, PA 17057, United States
(+717) 944-1300
info@phoenixcon.com