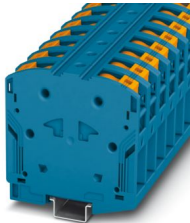


Please be informed that the data shown in this PDF document is generated from our online catalog. Please find the complete data in the user documentation. Our general terms of use for downloads are valid.



High-current terminal block, with test socket, nom. voltage: 1000 V, nominal current: 232 A, number of connections: 2, number of positions: 1, connection method: PowerTurn connection, cross section: 25 mm² - 95 mm², mounting type: NS 35/15, color: blue

Your advantages

- Quick and easy connection is now also possible for large conductors with the high-current terminal block
- In addition to using the existing test pick-off, pick-off terminal blocks can be connected, each of which can also accommodate two test cables
- The Push-in connection terminal blocks are characterized by the system features of the CLIPLINE complete system and by easy and tool-free wiring of conductors with ferrules or solid conductors
- The compact design enables wiring in a confined space
- Tested for railway applications

Commercial data

| | |
|--------------------------------------|---------------------|
| Item number | 3260166 |
| Packing unit | 3 pc |
| Minimum order quantity | 3 pc |
| Product key | BE2211 |
| Catalog page | Page 109 (C-3-2013) |
| GTIN | 4046356805049 |
| Weight per piece (including packing) | 265.033 g |
| Weight per piece (excluding packing) | 197.5 g |
| Customs tariff number | 85369010 |
| Country of origin | PL |

PTPOWER 95 P BU - High-current terminal block



3260166

<https://www.phoenixcontact.com/pc/products/3260166>

Technical data

Product properties

| | |
|-----------------------|-----------------------------|
| Product type | High current terminal block |
| Area of application | Railway industry |
| | Machine building |
| | Plant engineering |
| Number of positions | 1 |
| Number of connections | 2 |
| Number of rows | 1 |
| Potentials | 1 |

Data management status

| | |
|------------------|----|
| Article revision | 14 |
|------------------|----|

Insulation characteristics

| | |
|----------------------|-----|
| Overvoltage category | III |
| Degree of pollution | 3 |

Electrical properties

| | |
|---|--------|
| Rated surge voltage | 8 kV |
| Maximum power dissipation for nominal condition | 7.54 W |

Connection data

| | |
|---|---|
| Number of connections per level | 2 |
| Nominal cross section | 95 mm ² |
| Stripping length | 40 mm |
| Connection in acc. with standard | IEC 60947-7-1 |
| Conductor cross section rigid | 25 mm ² ... 95 mm ² |
| Cross section AWG | 2 ... 3/0 (converted acc. to IEC) |
| Conductor cross section flexible | 25 mm ² ... 95 mm ² |
| Conductor cross section, flexible [AWG] | 2 ... 3/0 (converted acc. to IEC) |
| Conductor cross-section flexible (ferrule without plastic sleeve) | 25 mm ² ... 95 mm ² |
| Flexible conductor cross section (ferrule with plastic sleeve) | 25 mm ² ... 95 mm ² |
| Cross-section with insertion bridge, rigid | 70 mm ² |
| Cross-section with insertion bridge, flexible | 70 mm ² |
| Nominal current | 232 A |
| Maximum load current | 232 A (with 95 mm ² conductor cross section) |
| Nominal voltage | 1000 V |

Connection cross sections directly pluggable

| | |
|---|---|
| Conductor cross section rigid | 25 mm ² ... 95 mm ² |
| Conductor cross-section flexible (ferrule without plastic sleeve) | 25 mm ² ... 95 mm ² |
| Flexible conductor cross section (ferrule with plastic sleeve) | 25 mm ² ... 95 mm ² |

PTPOWER 95 P BU - High-current terminal block



3260166

<https://www.phoenixcontact.com/pc/products/3260166>

Ex data

Rated data (ATEX/IECEx)

| | |
|-----------------------------------|---|
| Identification | Ex II 2 GD Ex eb IIC Gb |
| Operating temperature range | -60 °C ... 110 °C |
| Ex-certified accessories | 1206612 SZF 3-1,0X5,5 |
| | 1201662 E/AL-NS 35 |
| List of bridges | Insertion bridge / EB 2-25/PT / 3260157 |
| Bridge data | 144 A / 50 mm ² |
| | 174 A / 70 mm ² |
| List of bridges | Insertion bridge / EB 3-25/PT / 3260160 |
| Bridge data | 144 A / 50 mm ² |
| | 174 A / 70 mm ² |
| Ex temperature increase | 40 K (237 A / 95 mm ²) |
| Rated voltage | 1100 V |
| at bridging with insertion bridge | 1100 V |
| for bridging with bridge | 1100 V |
| Rated insulation voltage | 1000 V |
| output | (Permanent) |

Ex level General

| | |
|----------------------|--------|
| Rated current | 215 A |
| Maximum load current | 215 A |
| Contact resistance | 0.1 mΩ |

Ex connection data General

| | |
|--|---|
| Ferrule length | 40 mm |
| Stripping length | 40 mm |
| Nominal cross section | 95 mm ² |
| Rated cross section AWG | 4/0 |
| Connection capacity rigid | 25 mm ² ... 95 mm ² |
| Connection capacity AWG | 4 ... 4/0 |
| Conductor cross section flexible, with ferrule without plastic sleeve min. | 25 mm ² |
| Conductor cross section flexible, with ferrule without plastic sleeve max. | 95 mm ² |
| Single conductor/terminal point, flexible, with ferrule, without plastic sleeve, AWG | 4 ... 4/0 |

Dimensions

| | |
|-------------------|----------|
| Width | 25 mm |
| Height | 105.5 mm |
| Depth on NS 35/15 | 108.7 mm |

Material specifications

| | |
|-------|-----------------|
| Color | blue (RAL 5015) |
|-------|-----------------|

PTPOWER 95 P BU - High-current terminal block



3260166

<https://www.phoenixcontact.com/pc/products/3260166>

| | |
|--|-------------|
| Flammability rating according to UL 94 | V0 |
| Insulating material group | I |
| Insulating material | PA |
| Static insulating material application in cold | -60 °C |
| Relative insulation material temperature index (Elec., UL 746 B) | 130 °C |
| Fire protection for rail vehicles (DIN EN 45545-2) R22 | HL 1 - HL 3 |
| Fire protection for rail vehicles (DIN EN 45545-2) R23 | HL 1 - HL 3 |
| Fire protection for rail vehicles (DIN EN 45545-2) R24 | HL 1 - HL 3 |
| Fire protection for rail vehicles (DIN EN 45545-2) R26 | HL 1 - HL 3 |
| Surface flammability NFPA 130 (ASTM E 162) | passed |
| Specific optical density of smoke NFPA 130 (ASTM E 662) | passed |
| Smoke gas toxicity NFPA 130 (SMP 800C) | passed |

Electrical tests

Surge voltage test

| | |
|-----------------------|-------------|
| Test voltage setpoint | 9.8 kV |
| Result | Test passed |

Temperature-rise test

| | |
|---|-------------------------------------|
| Requirement temperature-rise test | Increase in temperature ≤ 45 K |
| Result | Test passed |
| Short-time withstand current 95 mm ² | 11.4 kA |
| Result | Test passed |

Power-frequency withstand voltage

| | |
|-----------------------|-------------|
| Test voltage setpoint | 6 kV |
| Result | Test passed |

Mechanical properties

Mechanical data

| | |
|-----------------|----|
| Open side panel | No |
|-----------------|----|

Mechanical tests

Mechanical strength

| | |
|--------|-------------|
| Result | Test passed |
|--------|-------------|

Attachment on the carrier

| | |
|-------------------------|-------------|
| DIN rail/fixing support | NS 35/15 |
| Test force setpoint | 15 N |
| Result | Test passed |

Test for conductor damage and slackening

| | |
|--------------------------------|-----------------------------|
| Rotation speed | 10 rpm |
| Revolutions | 135 |
| Conductor cross section/weight | 25 mm ² / 4.5 kg |

PTPOWER 95 P BU - High-current terminal block



3260166

<https://www.phoenixcontact.com/pc/products/3260166>

| | |
|--------|---------------------------|
| | 95 mm ² /14 kg |
| Result | Test passed |

Environmental and real-life conditions

Aging

| | |
|--------------------|-------------|
| Temperature cycles | 192 |
| Result | Test passed |

Needle-flame test

| | |
|------------------|-------------|
| Time of exposure | 30 s |
| Result | Test passed |

Oscillation/broadband noise

| | |
|------------------------|--|
| Specification | DIN EN 50155 (VDE 0115-200):2008-03 |
| Spectrum | Service life test category 2, bogie-mounted |
| Frequency | $f_1 = 5 \text{ Hz}$ to $f_2 = 250 \text{ Hz}$ |
| ASD level | 6.12 (m/s ²) ² /Hz |
| Acceleration | 3.12g |
| Test duration per axis | 5 h |
| Test directions | X-, Y- and Z-axis |
| Result | Test passed |

Shocks

| | |
|--------------------------------|-------------------------------------|
| Specification | DIN EN 50155 (VDE 0115-200):2008-03 |
| Pulse shape | Half-sine |
| Acceleration | 30g |
| Shock duration | 18 ms |
| Number of shocks per direction | 3 |
| Test directions | X-, Y- and Z-axis (pos. and neg.) |
| Result | Test passed |

Ambient conditions

| | |
|--|--|
| Ambient temperature (operation) | -60 °C ... 110 °C (Operating temperature range incl. self-heating; for max. short-term operating temperature, see RTI Elec.) |
| Ambient temperature (storage/transport) | -25 °C ... 60 °C (for a short time, no longer than 24 h, -60 °C to +70 °C) |
| Ambient temperature (assembly) | -5 °C ... 70 °C |
| Ambient temperature (actuation) | -5 °C ... 70 °C |
| Permissible humidity (operation) | 20 % ... 90 % |
| Permissible humidity (storage/transport) | 30 % ... 70 % |

Standards and regulations

| | |
|----------------------------------|---------------|
| Connection in acc. with standard | IEC 60947-7-1 |
|----------------------------------|---------------|

Mounting

| | |
|---------------|----------|
| Mounting type | NS 35/15 |
|---------------|----------|

PTPOWER 95 P BU - High-current terminal block


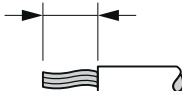
3260166

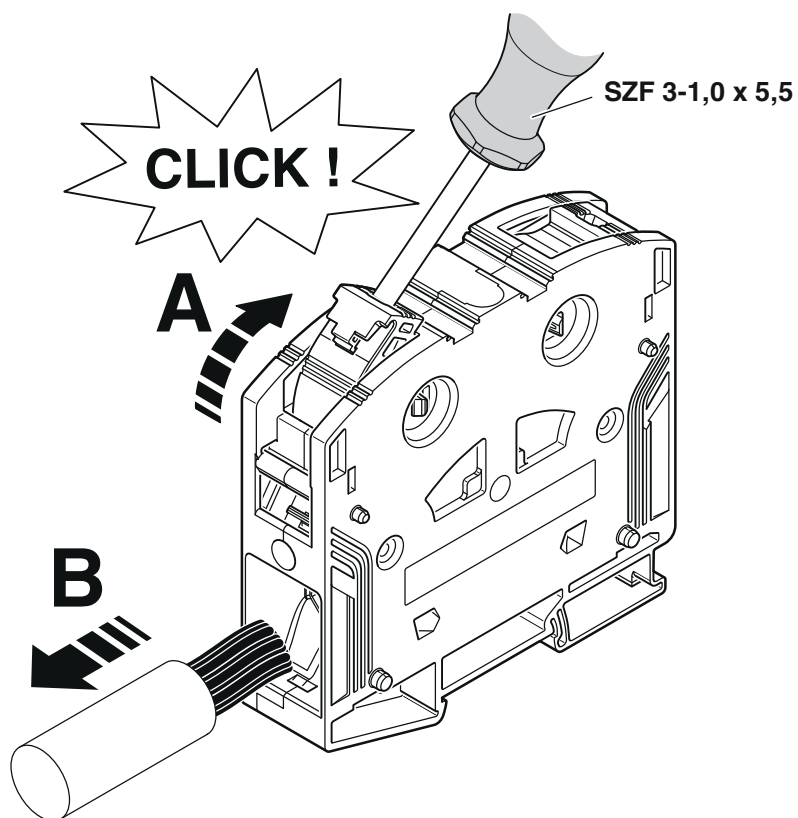
<https://www.phoenixcontact.com/pc/products/3260166>

Drawings

Schematic diagram

PTPOWER

| | | |
|----------------|---|--|
| |  |  |
| AGK 10-PTPOWER | 0,5 mm ² ... 16 mm ² | 18 mm |
| PTPOWER 35 | 2,5 mm ² ... 35 mm ² | 25 mm |
| PTPOWER 50 | 10 mm ² ... 50 mm ² | 32 mm |
| PTPOWER 95 | 25 mm ² ... 95 mm ² | 40 mm |
| PTPOWER 185 | 95 mm ² ... 185 mm ² | 40 mm |



PPOWER 95 P BU - High-current terminal block



3260166

<https://www.phoenixcontact.com/pc/products/3260166>

Circuit diagram



PTPOWER 95 P BU - High-current terminal block



3260166

<https://www.phoenixcontact.com/pc/products/3260166>

Approvals

To download certificates, visit the product detail page: <https://www.phoenixcontact.com/pc/products/3260166>



CSA
Approval ID: 13631



EAC
Approval ID: RU C-DE.BL08.B.00644

DNV

Approval ID: TAE0000029



cUL Recognized
Approval ID: E60425

| | Nominal voltage U_N | Nominal current I_N | Cross section AWG | Cross section mm^2 |
|-------------|-----------------------|-----------------------|-------------------|-----------------------------|
| Use group C | 1000 V | 230 A | 4 - 4/0 | - |



UL Recognized
Approval ID: E60425

| | Nominal voltage U_N | Nominal current I_N | Cross section AWG | Cross section mm^2 |
|-------------|-----------------------|-----------------------|-------------------|-----------------------------|
| Use group E | 1000 V | 230 A | 4 - 4/0 | - |



CSA
Approval ID: 13631



EAC Ex
Approval ID: RU C-DE.HA91.B.00066



CCC
Approval ID: 2020322313000630



UKCA-EX
Approval ID: CML 22UKEX1227U



IECEx


PTPOWER 95 P BU - High-current terminal block




3260166

<https://www.phoenixcontact.com/pc/products/3260166>

Approval ID: IECExSEV14.0013U

| | | | | |
|---|-----------------------|-----------------------|-------------------|-----------------------------|
| <div><div></div><div><div>ATEX</div><div>Approval ID: SEV14ATEX0156U</div></div></div> | | | | |
| | Nominal voltage U_N | Nominal current I_N | Cross section AWG | Cross section mm^2 |
| | 1100 V | 215 A | - | 25 - 95 |

| | | | | |
|--|--|--|--|--|
| <div><div></div><div><div>IECEx</div><div>Approval ID: IECExSEV14.0013U</div></div></div> | | | | |
|--|--|--|--|--|

cULus Recognized

PTPOWER 95 P BU - High-current terminal block



3260166

<https://www.phoenixcontact.com/pc/products/3260166>

Classifications

ECLASS

| | |
|-------------|----------|
| ECLASS-11.0 | 27141120 |
| ECLASS-13.0 | 27250101 |

ETIM

| | |
|----------|----------|
| ETIM 9.0 | EC000897 |
|----------|----------|

UNSPSC

| | |
|-------------|----------|
| UNSPSC 21.0 | 39121400 |
|-------------|----------|

PTPOWER 95 P BU - High-current terminal block



3260166
<https://www.phoenixcontact.com/pc/products/3260166>

Environmental product compliance

| | |
|---|--|
| EU RoHS | |
| Fulfills EU RoHS substance requirements | Yes, No exemptions |
| China RoHS | |
| Environment friendly use period (EFUP) | EFUP-E |
| | No hazardous substances above the limits |
| EU REACH SVHC | |
| REACH candidate substance (CAS No.) | No substance above 0.1 wt% |

Phoenix Contact 2024 © - all rights reserved
<https://www.phoenixcontact.com>

PHOENIX CONTACT GmbH & Co. KG
Flachmarktstraße 8
D-32825 Blomberg
+49 (0) 5235-3 00
info@phoenixcontact.com