



SETRON, Switch disconnecter 3LD, emergency switching-off switch, 3-pole, Iu: 25 A, operating power / at AC-23 A 400 V: 9.5 kW, front-mounted, rotary operating mechanism, Red / yellow, 4-hole mounting of the handle

| Model | |
|---|--|
| product brand name | SETRON |
| product designation | 3LD Switch disconnecter |
| design of the product | EMERGENCY-STOP switch |
| display version for switch position indicator manual operation | 1 ON - 0 OFF |
| type of switch | front mounted |
| design of the actuating element | Short rotary knob |
| color of the actuating element | red |
| design of handle | rotary operating mechanism, red/yellow |
| type of the driving mechanism motor drive | No |
| General technical data | |
| number of poles | 3 |
| size of switch disconnecter | 2 |
| mechanical service life (switching cycles) typical | 100 000 |
| electrical endurance (switching cycles) | |
| • at AC-23 A at 690 V | 6 000 |
| operating frequency maximum | 50 1/h |
| degree of pollution | 3 |
| Voltage | |
| insulation voltage rated value | 690 V |
| surge voltage resistance rated value | 6 kV |
| operating voltage | |
| • at AC rated value | 690 V |
| operating frequency rated value | |
| • minimum | 50 Hz |
| • maximum | 60 Hz |
| Protection class | |
| protection class IP | IP65 |
| degree of protection NEMA rating | 1, 3R, 4X, 12 |
| protection class IP on the front | IP65 |
| Dissipation | |
| power loss [W] for rated value of the current at AC in hot operating state per pole | 1.1 W |
| Current | |
| operational current rated value | 25 A |
| operational current | |
| • at 40 °C rated value | 25 A |
| • at 45 °C rated value | 25 A |
| • at 50 °C rated value | 25 A |
| • at 55 °C rated value | 25 A |

| | |
|--|--|
| <ul style="list-style-type: none"> at AC rated value | 25 A |
| Main circuit | |
| operational current | |
| <ul style="list-style-type: none"> at AC-21 at 690 V rated value at AC-21 A at 240 V rated value at AC-21 A at 400 V rated value at AC-21 A at 440 V rated value at AC-23 A at 400 V rated value | 25 A 25 A 25 A 25 A 20 A |
| operating power | |
| <ul style="list-style-type: none"> at AC-23 A at 240 V rated value at AC-23 A at 400 V rated value at AC-23 A at 440 V rated value at AC-23 A at 690 V rated value at AC-3 at 240 V rated value at AC-3 at 400 V rated value at AC-3 at 690 V rated value | 5 kW 10 kW 9.5 kW 10 kW 4 kW 8 kW 7.5 kW |
| Auxiliary circuit | |
| number of CO contacts for auxiliary contacts | 0 |
| number of NC contacts for auxiliary contacts | 0 |
| number of NO contacts for auxiliary contacts | 0 |
| operating voltage of auxiliary contacts at AC maximum | 500 V |
| continuous current of the auxiliary contact rated value | 10 A |
| insulation voltage of the auxiliary switch rated value | 500 V |
| Suitability | |
| suitability for use | |
| <ul style="list-style-type: none"> main switch switch disconnecter EMERGENCY OFF switch safety switch maintenance/repair switch | Yes Yes Yes Yes Yes |
| Product details | |
| product feature can be locked into OFF position | Yes |
| accessories | |
| product extension optional | |
| <ul style="list-style-type: none"> motor drive voltage trigger | No No |
| number of connectable NC contacts for auxiliary contacts attachable maximum | 3 |
| number of connectable NO contacts for auxiliary contacts attachable maximum | 3 |
| number of connectable CO contacts for auxiliary contacts attachable maximum | 0 |
| number of bracket locks maximum | 3 |
| hasp thickness of the bracket locks | 4 ... 8 mm |
| Short circuit | |
| conditional short-circuit current with line-side fuse protection | |
| <ul style="list-style-type: none"> at 690 V by gG fuse rated value | 50 kA |
| let-through current with closed switch | |
| <ul style="list-style-type: none"> at 240 V for combination switch + gG fuse maximum at 440 V for combination switch + gG fuse maximum at 690 V for combination switch + gG fuse maximum permissible | 3.5 kA 3.5 kA 4 kA |
| I ² t value with closed switch | |
| <ul style="list-style-type: none"> at 240 V for combination switch + gG fuse maximum at 440 V for combination switch + gG fuse maximum at 690 V for combination switch + gG fuse maximum | 4 kA ² .s 4 kA ² .s 4 kA ² .s |
| design of the fuse link | |
| <ul style="list-style-type: none"> for short-circuit protection of the main circuit required for short-circuit protection of the auxiliary switch required | fuse gL/gG: 25 A fuse gL/gG: 10 A |
| operational current of upstream fuse rated value | 25 A |

| according UL | |
|--|-------|
| operational current at AC according to UL 508/UL 60947-4-1 rated value | 25 A |
| operating voltage at AC at 50/60 Hz according to UL 508/UL 60947-4-1 rated value | 600 V |
| active power [hp] at AC at 480 V according to UL 508/UL 60947-4-1 rated value | 10 |
| active power [hp] at AC at 600 V according to UL 508/UL 60947-4-1 rated value | 15 |
| short-time withstand current (SCCR) at 600 V according to UL 508/UL 60947-4-1 | 5 kA |
| continuous current of upstream fuse according to UL rated value | 50 A |
| type of fuse according to UL | RK5 |

| Connections | |
|---|--|
| AWG number as coded connectable conductor cross section solid | |
| <ul style="list-style-type: none"> • maximum • minimum | <p>8</p> <p>14</p> |
| type of connectable conductor cross-sections for copper conductor | |
| <ul style="list-style-type: none"> • solid • finely stranded with core end processing • stranded | <p>1x (1,5...16mm²)</p> <p>1x (1,5...10mm²)</p> <p>1x (1,5...16mm²)</p> |
| type of connectable conductor cross-sections for auxiliary contacts | |
| <ul style="list-style-type: none"> • solid • finely stranded with core end processing • stranded | <p>lateral auxiliary switch 2x (0,75 ... 2,5mm²), 1x 4mm²; front auxiliary switch 1x (0,75 ... 2,5mm²)</p> <p>lateral auxiliary switch 2x (0,75 ... 1,5mm²), 1x 2,5mm²; front auxiliary switch 1x 2,5mm²</p> <p>lateral auxiliary switch 2x (0,75 ... 2,5mm²), 1x 4mm²; front auxiliary switch 1x (0,75 ... 2,5mm²)</p> |
| type of electrical connection | |
| <ul style="list-style-type: none"> • for main current circuit • for auxiliary contacts | <p>box terminal</p> <p>connection terminals</p> |

| Mechanical Design | |
|--|-------------------------------------|
| height | 84 mm |
| width | 67 mm |
| depth | 92.5 mm |
| type of device | fixed mounting |
| fastening method | Built-in unit fixed-mounted version |
| fastening method | |
| <ul style="list-style-type: none"> • 4-hole front mounting • front mounting with central attachment • rail mounting | <p>Yes</p> <p>No</p> <p>No</p> |
| net weight | 187 g |

| Environmental conditions | |
|--|----------------------------|
| ambient temperature during operation | |
| <ul style="list-style-type: none"> • minimum • maximum | <p>-25 °C</p> <p>55 °C</p> |
| ambient temperature during storage | |
| <ul style="list-style-type: none"> • minimum • maximum | <p>-25 °C</p> <p>55 °C</p> |

General Product Approval



[Confirmation](#)



[Miscellaneous](#)

| | | | |
|--------------------------|---------------------------|-------------------|-------------------|
| General Product Approval | Declaration of Conformity | Test Certificates | Marine / Shipping |
|--------------------------|---------------------------|-------------------|-------------------|



Special Test Certificate



Marine / Shipping other



[Miscellaneous](#)

[Environmental Confirmations](#)

Further information

Information- and Downloadcenter (Catalogs, Brochures,...)

<http://www.siemens.com/lowvoltage/catalogs>

Industry Mall (Online ordering system)

<https://mall.industry.siemens.com/mall/en/en/Catalog/product?mlfb=3LD2103-0TK53>

Service&Support (Manuals, Certificates, Characteristics, FAQs,...)

<https://support.industry.siemens.com/cs/ww/en/ps/3LD2103-0TK53>

Image database (product images, 2D dimension drawings, 3D models, device circuit diagrams, ...)

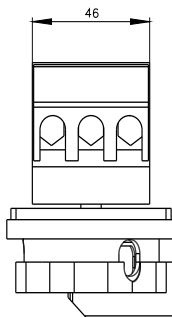
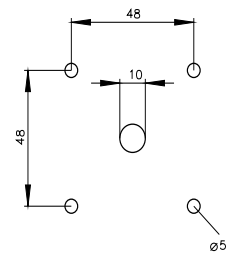
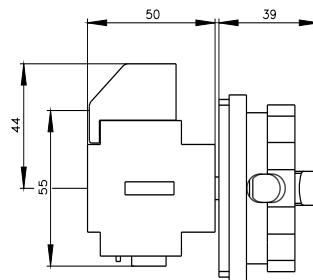
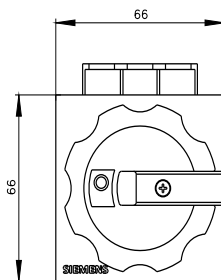
http://www.automation.siemens.com/bilddb/cax_en.aspx?mlfb=3LD2103-0TK53

CAX-Online-Generator

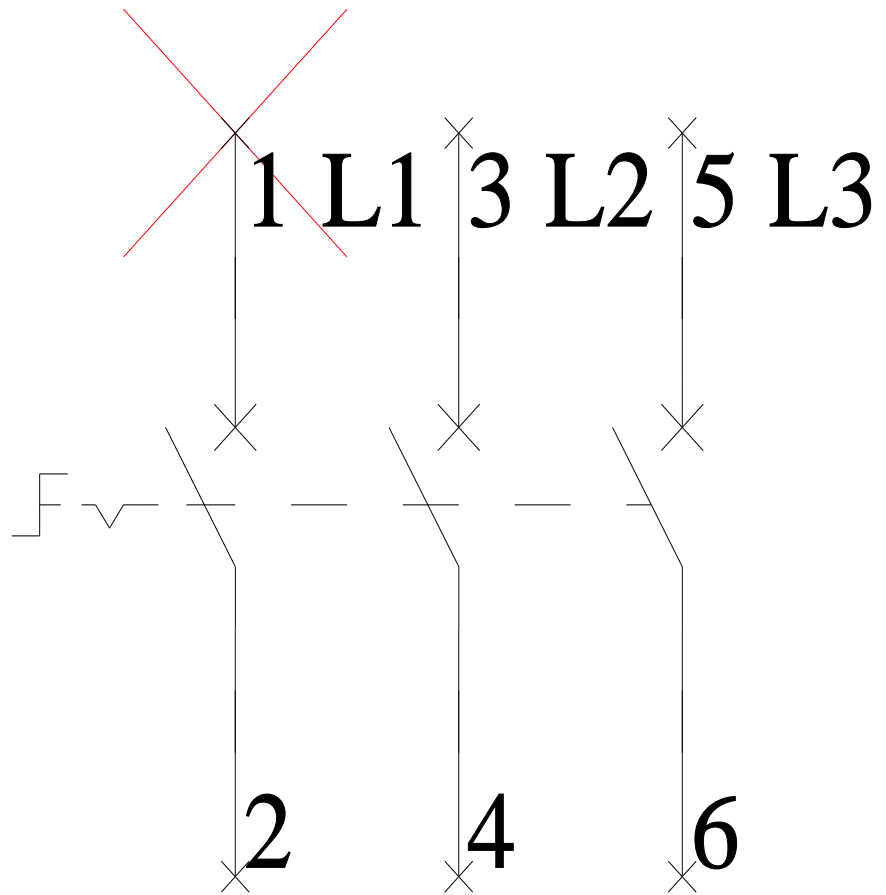
<http://www.siemens.com/cax>

Tender specifications

<http://www.siemens.com/specifications>



-Q1



-CI

