

LINK MODULE, ELECTRICAL AND MECHANICAL,  
FOR 3RV2011 AND 3RT201.,  
SPRING-LOADED TERMINALS

**General technical data:**

<b>Product brand name</b>		SIRIUS
<b>Product designation</b>		link module
<b>Size of the circuit-breaker</b>		S00
<b>Size of the contactor</b>		S00
<b>Design of the product</b>		actuating voltage contactor: AC and DC
<b>Acceptability for application</b>		contactor S00 - circuit breaker S00 - spring-loaded terminal

**Installation/mounting/dimensions:**

<b>Type of fixing/fixation</b>		clip-on
<b>Width</b>	mm	45
<b>Height</b>	mm	50
<b>Depth</b>	mm	82.2

**Further information:**

**Information- and Downloadcenter (Catalogs, Brochures,...)**

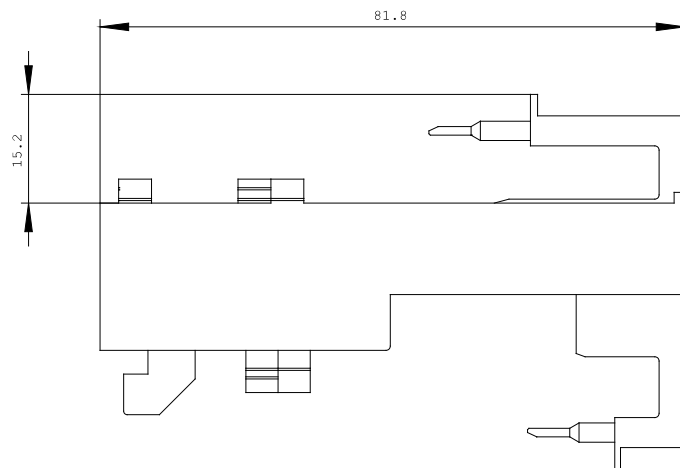
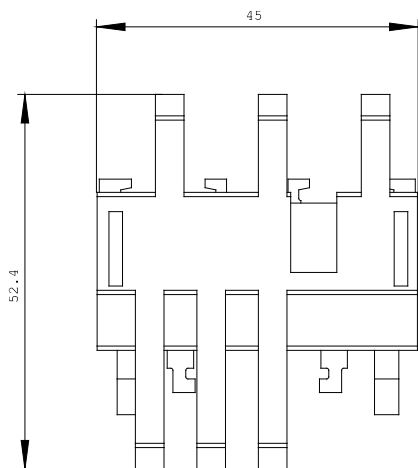
<http://www.siemens.com/industrial-controls/catalogs>

**Global Industry Mall (Online ordering system)**

<http://www.siemens.com/industrial-controls/mall>

**Service&Support (Manuals, Certificates, Characteristics, FAQs,...)**

<http://support.automation.siemens.com/WW/view/en/3RA2911-2AA00/all>



last change:

Apr 26, 2010