



power contactor, AC-3e/AC-3 225 A, 110 kW / 400 V AC (50-60 Hz) / DC
Uc: 23-26 V 3-pole, auxiliary contacts 2 NO + 2 NC drive: conventional
main circuit: busbar control and auxiliary circuit: screw terminal

| | |
|--------------------------|-----------------|
| product brand name | SIRIUS |
| product designation | Power contactor |
| product type designation | 3RT1 |

General technical data

| | |
|---|--|
| size of contactor | S10 |
| product extension | |
| <ul style="list-style-type: none"> function module for communication auxiliary switch | No Yes |
| power loss [W] for rated value of the current | |
| <ul style="list-style-type: none"> at AC in hot operating state at AC in hot operating state per pole without load current share typical | 51 W 17 W 7.4 W |
| insulation voltage | |
| <ul style="list-style-type: none"> of main circuit with degree of pollution 3 rated value of auxiliary circuit with degree of pollution 3 rated value | 1 000 V 500 V |
| surge voltage resistance | |
| <ul style="list-style-type: none"> of main circuit rated value of auxiliary circuit rated value | 8 kV 6 kV |
| maximum permissible voltage for safe isolation between coil and main contacts according to EN 60947-1 | 690 V |
| shock resistance at rectangular impulse | |
| <ul style="list-style-type: none"> at AC at DC | 8,5g / 5 ms, 4,2g / 10 ms 8,5g / 5 ms, 4,2g / 10 ms |
| shock resistance with sine pulse | |
| <ul style="list-style-type: none"> at AC at DC | 13,4g / 5 ms, 6,5g / 10 ms 13,4g / 5 ms, 6,5g / 10 ms |
| mechanical service life (operating cycles) | |
| <ul style="list-style-type: none"> of contactor typical of the contactor with added electronically optimized auxiliary switch block typical of the contactor with added auxiliary switch block typical | 10 000 000 5 000 000 10 000 000 |
| reference code according to IEC 81346-2 | Q |
| Substance Prohibition (Date) | 05/01/2012 |

Ambient conditions

| | |
|--|----------------------------------|
| installation altitude at height above sea level maximum | 2 000 m |
| ambient temperature | |
| <ul style="list-style-type: none"> during operation during storage | -25 ... +60 °C -55 ... +80 °C |
| relative humidity minimum | 10 % |
| relative humidity at 55 °C according to IEC 60068-2-30 maximum | 95 % |

Main circuit

| | |
|--|---------------------|
| number of poles for main current circuit | 3 |
| number of NO contacts for main contacts | 3 |
| operating voltage | |
| • at AC-3 rated value maximum | 1 000 V |
| • at AC-3e rated value maximum | 1 000 V |
| operational current | |
| • at AC-1 at 400 V at ambient temperature 40 °C rated value | 275 A |
| • at AC-1 | |
| — up to 690 V at ambient temperature 40 °C rated value | 275 A |
| — up to 690 V at ambient temperature 60 °C rated value | 250 A |
| — up to 1000 V at ambient temperature 40 °C rated value | 100 A |
| — up to 1000 V at ambient temperature 60 °C rated value | 100 A |
| • at AC-3 | |
| — at 400 V rated value | 225 A |
| — at 500 V rated value | 225 A |
| — at 690 V rated value | 225 A |
| — at 1000 V rated value | 68 A |
| • at AC-3e | |
| — at 400 V rated value | 225 A |
| — at 500 V rated value | 225 A |
| — at 1000 V rated value | 68 A |
| • at AC-4 at 400 V rated value | 195 A |
| • at AC-5a up to 690 V rated value | 242 A |
| • at AC-5b up to 400 V rated value | 186 A |
| • at AC-6a | |
| — up to 230 V for current peak value n=20 rated value | 225 A |
| — up to 400 V for current peak value n=20 rated value | 225 A |
| — up to 500 V for current peak value n=20 rated value | 225 A |
| — up to 690 V for current peak value n=20 rated value | 225 A |
| — up to 1000 V for current peak value n=20 rated value | 68 A |
| • at AC-6a | |
| — up to 230 V for current peak value n=30 rated value | 172 A |
| — up to 400 V for current peak value n=30 rated value | 172 A |
| — up to 500 V for current peak value n=30 rated value | 172 A |
| — up to 690 V for current peak value n=30 rated value | 172 A |
| — up to 1000 V for current peak value n=30 rated value | 68 A |
| minimum cross-section in main circuit at maximum AC-1 rated value | 150 mm ² |
| operational current for approx. 200000 operating cycles at AC-4 | |
| • at 400 V rated value | 96 A |
| • at 690 V rated value | 85 A |
| operational current | |
| • at 1 current path at DC-1 | |
| — at 24 V rated value | 200 A |
| — at 60 V rated value | 200 A |
| — at 110 V rated value | 18 A |
| — at 220 V rated value | 3.4 A |
| — at 440 V rated value | 0.8 A |
| — at 600 V rated value | 0.5 A |
| • with 2 current paths in series at DC-1 | |

| | |
|---|------------|
| — at 24 V rated value | 200 A |
| — at 60 V rated value | 200 A |
| — at 110 V rated value | 200 A |
| — at 220 V rated value | 20 A |
| — at 440 V rated value | 3.2 A |
| — at 600 V rated value | 1.6 A |
| ● with 3 current paths in series at DC-1 | |
| — at 24 V rated value | 200 A |
| — at 60 V rated value | 200 A |
| — at 110 V rated value | 200 A |
| — at 220 V rated value | 200 A |
| — at 440 V rated value | 11 A |
| — at 600 V rated value | 4 A |
| ● at 1 current path at DC-3 at DC-5 | |
| — at 24 V rated value | 200 A |
| — at 60 V rated value | 7.5 A |
| — at 220 V rated value | 0.6 A |
| — at 440 V rated value | 0.17 A |
| — at 600 V rated value | 0.12 A |
| ● with 2 current paths in series at DC-3 at DC-5 | |
| — at 24 V rated value | 200 A |
| — at 60 V rated value | 200 A |
| — at 110 V rated value | 200 A |
| — at 220 V rated value | 2.5 A |
| — at 440 V rated value | 0.65 A |
| — at 600 V rated value | 0.37 A |
| ● with 3 current paths in series at DC-3 at DC-5 | |
| — at 24 V rated value | 200 A |
| — at 60 V rated value | 200 A |
| — at 110 V rated value | 200 A |
| — at 220 V rated value | 200 A |
| — at 440 V rated value | 1.4 A |
| — at 600 V rated value | 0.75 A |
| operating power | |
| ● at AC-3 | |
| — at 230 V rated value | 55 kW |
| — at 400 V rated value | 110 kW |
| — at 500 V rated value | 160 kW |
| — at 690 V rated value | 200 kW |
| — at 1000 V rated value | 90 kW |
| ● at AC-3e | |
| — at 230 V rated value | 55 kW |
| — at 400 V rated value | 110 kW |
| — at 500 V rated value | 160 kW |
| — at 1000 V rated value | 90 kW |
| operating power for approx. 200000 operating cycles at AC-4 | |
| ● at 400 V rated value | 54 kW |
| ● at 690 V rated value | 82 kW |
| operating apparent power at AC-6a | |
| ● up to 230 V for current peak value n=20 rated value | 90 000 kVA |
| ● up to 400 V for current peak value n=20 rated value | 150 000 VA |
| ● up to 500 V for current peak value n=20 rated value | 190 000 VA |
| ● up to 690 V for current peak value n=20 rated value | 260 000 VA |
| ● up to 1000 V for current peak value n=20 rated value | 110 000 VA |
| operating apparent power at AC-6a | |
| ● up to 230 V for current peak value n=30 rated value | 60 000 VA |
| ● up to 400 V for current peak value n=30 rated value | 110 000 VA |
| ● up to 500 V for current peak value n=30 rated value | 140 000 VA |
| ● up to 690 V for current peak value n=30 rated value | 200 000 VA |
| ● up to 1000 V for current peak value n=30 rated value | 110 000 VA |
| short-time withstand current in cold operating state up to 40 °C | |

| | |
|---|---|
| <ul style="list-style-type: none"> • limited to 1 s switching at zero current maximum • limited to 5 s switching at zero current maximum • limited to 10 s switching at zero current maximum • limited to 30 s switching at zero current maximum • limited to 60 s switching at zero current maximum | 4 000 A; Use minimum cross-section acc. to AC-1 rated value 2 807 A; Use minimum cross-section acc. to AC-1 rated value 2 082 A; Use minimum cross-section acc. to AC-1 rated value 1 397 A; Use minimum cross-section acc. to AC-1 rated value 1 144 A; Use minimum cross-section acc. to AC-1 rated value |
| no-load switching frequency | |
| <ul style="list-style-type: none"> • at AC • at DC | 2 000 1/h 2 000 1/h |
| operating frequency | |
| <ul style="list-style-type: none"> • at AC-1 maximum • at AC-2 maximum • at AC-3 maximum • at AC-3e maximum • at AC-4 maximum | 750 1/h 250 1/h 500 1/h 500 1/h 130 1/h |
| Control circuit/ Control | |
| type of voltage of the control supply voltage | AC/DC |
| control supply voltage at AC | |
| <ul style="list-style-type: none"> • at 50 Hz rated value • at 60 Hz rated value | 23 ... 26 V 23 ... 26 V |
| control supply voltage at DC | |
| <ul style="list-style-type: none"> • rated value | 23 ... 26 V |
| operating range factor control supply voltage rated value of magnet coil at DC | |
| <ul style="list-style-type: none"> • initial value • full-scale value | 0.8 1.1 |
| operating range factor control supply voltage rated value of magnet coil at AC | |
| <ul style="list-style-type: none"> • at 50 Hz • at 60 Hz | 0.8 ... 1.1 0.8 ... 1.1 |
| design of the surge suppressor | with varistor |
| apparent pick-up power of magnet coil at AC | |
| <ul style="list-style-type: none"> • at 50 Hz • at 60 Hz | 590 VA 590 VA |
| inductive power factor with closing power of the coil | |
| <ul style="list-style-type: none"> • at 50 Hz • at 60 Hz | 0.9 0.9 |
| apparent holding power of magnet coil at AC | |
| <ul style="list-style-type: none"> • at 50 Hz • at 60 Hz | 6.7 VA 6.7 VA |
| inductive power factor with the holding power of the coil | |
| <ul style="list-style-type: none"> • at 50 Hz • at 60 Hz | 0.9 0.9 |
| closing power of magnet coil at DC | 650 W |
| holding power of magnet coil at DC | 7.4 W |
| closing delay | |
| <ul style="list-style-type: none"> • at AC • at DC | 30 ... 95 ms 30 ... 95 ms |
| opening delay | |
| <ul style="list-style-type: none"> • at AC • at DC | 40 ... 80 ms 40 ... 80 ms |
| arcing time | 10 ... 15 ms |
| control version of the switch operating mechanism | Standard A1 - A2 |
| Auxiliary circuit | |
| number of NC contacts for auxiliary contacts instantaneous contact | 2 |
| number of NO contacts for auxiliary contacts instantaneous contact | 2 |
| operational current at AC-12 maximum | 10 A |
| operational current at AC-15 | |
| <ul style="list-style-type: none"> • at 230 V rated value • at 400 V rated value • at 500 V rated value • at 690 V rated value | 6 A 3 A 2 A 1 A |

| | |
|--|---|
| operational current at DC-12 | |
| • at 24 V rated value | 10 A |
| • at 48 V rated value | 6 A |
| • at 60 V rated value | 6 A |
| • at 110 V rated value | 3 A |
| • at 125 V rated value | 2 A |
| • at 220 V rated value | 1 A |
| • at 600 V rated value | 0.15 A |
| operational current at DC-13 | |
| • at 24 V rated value | 10 A |
| • at 48 V rated value | 2 A |
| • at 60 V rated value | 2 A |
| • at 110 V rated value | 1 A |
| • at 125 V rated value | 0.9 A |
| • at 220 V rated value | 0.3 A |
| • at 600 V rated value | 0.1 A |
| contact reliability of auxiliary contacts | |
| 1 faulty switching per 100 million (17 V, 1 mA) | |
| UL/CSA ratings | |
| full-load current (FLA) for 3-phase AC motor | |
| • at 480 V rated value | 180 A |
| • at 600 V rated value | 192 A |
| yielded mechanical performance [hp] | |
| • for 3-phase AC motor | |
| — at 200/208 V rated value | 60 hp |
| — at 220/230 V rated value | 75 hp |
| — at 460/480 V rated value | 150 hp |
| — at 575/600 V rated value | 200 hp |
| contact rating of auxiliary contacts according to UL | |
| A600 / Q600 | |
| Short-circuit protection | |
| design of the fuse link | |
| • for short-circuit protection of the main circuit | |
| — with type of coordination 1 required | gG: 500 A (690 V, 100 kA) |
| — with type of assignment 2 required | gG: 400 A (690 V, 100 kA), aM: 315 A (690 V, 50 kA), BS88: 400 A (415 V, 50 kA) |
| • for short-circuit protection of the auxiliary switch required | gG: 10 A (500 V, 1 kA) |
| Installation/ mounting/ dimensions | |
| mounting position | |
| with vertical mounting surface +/-90° rotatable, with vertical mounting surface +/- 22.5° tiltable to the front and back | |
| fastening method | |
| • side-by-side mounting | screw fixing |
| height | |
| 210 mm | |
| width | |
| 145 mm | |
| depth | |
| 202 mm | |
| required spacing | |
| • with side-by-side mounting | |
| — forwards | 20 mm |
| — upwards | 10 mm |
| — downwards | 10 mm |
| — at the side | 0 mm |
| • for grounded parts | |
| — forwards | 20 mm |
| — upwards | 10 mm |
| — at the side | 10 mm |
| — downwards | 10 mm |
| • for live parts | |
| — forwards | 20 mm |
| — upwards | 10 mm |
| — downwards | 10 mm |
| — at the side | 10 mm |
| Connections/ Terminals | |
| type of electrical connection | |
| • for main current circuit | Connection bar |

- for auxiliary and control circuit
- at contactor for auxiliary contacts
- of magnet coil

width of connection bar

thickness of connection bar

diameter of holes

number of holes

connectable conductor cross-section for main contacts

- stranded

connectable conductor cross-section for auxiliary contacts

- solid or stranded
- finely stranded with core end processing

type of connectable conductor cross-sections

- for auxiliary contacts
 - solid
 - solid or stranded
 - finely stranded with core end processing
- at AWG cables for auxiliary contacts

AWG number as coded connectable conductor cross section

- for auxiliary contacts

screw-type terminals

Screw-type terminals

Screw-type terminals

25 mm

6 mm

11 mm

1

70 ... 240 mm²

0.5 ... 4 mm²

0.5 ... 2.5 mm²

2x (0.5 ... 1.5 mm²), 2x (0.75 ... 2.5 mm²), max. 2x (0.75 ... 4 mm²)

2x (0.5 ... 1.5 mm²), 2x (0.75 ... 2.5 mm²), max. 2x (0.75 ... 4 mm²)

2x (0.5 ... 1.5 mm²), 2x (0.75 ... 2.5 mm²)

2x (20 ... 16), 2x (18 ... 14), 1x 12

18 ... 14

Safety related data

product function

- mirror contact according to IEC 60947-4-1
- positively driven operation according to IEC 60947-5-1

B10 value with high demand rate according to SN 31920

T1 value for proof test interval or service life according to IEC 61508

protection class IP on the front according to IEC 60529

touch protection on the front according to IEC 60529

suitability for use

- safety-related switching OFF

Yes

No

1 000 000

20 a

IP00; IP20 with box terminal/cover

finger-safe, for vertical contact from the front with box terminal/cover

Yes

Certificates/ approvals

General Product Approval



[Confirmation](#)



[KC](#)



| EMC | Functional Safety/Safety of Machinery | Declaration of Conformity | Test Certificates |
|-----|---------------------------------------|---------------------------|-------------------|
|-----|---------------------------------------|---------------------------|-------------------|



[Type Examination Certificate](#)



EG-Konf.

[Type Test Certificates/Test Report](#)

[Special Test Certificate](#)

| Test Certificates | Marine / Shipping |
|-------------------|-------------------|
|-------------------|-------------------|

[Miscellaneous](#)



LRS



PRS



RMRS



DNV GL

| other | Railway |
|-------|---------|
|-------|---------|

Environment

[Environmental Confirmations](#)

Further information

Information on the packaging

<https://support.industry.siemens.com/cs/ww/en/view/109813875>

Information- and Downloadcenter (Catalogs, Brochures,...)

<https://www.siemens.com/ic10>

Industry Mall (Online ordering system)

<https://mall.industry.siemens.com/mall/en/en/Catalog/product?mlfb=3RT1064-6AB36>

Cax online generator

<http://support.automation.siemens.com/WW/CAXorder/default.aspx?lang=en&mlfb=3RT1064-6AB36>

Service&Support (Manuals, Certificates, Characteristics, FAQs,...)

<https://support.industry.siemens.com/cs/ww/en/ps/3RT1064-6AB36>

Image database (product images, 2D dimension drawings, 3D models, device circuit diagrams, EPLAN macros, ...)

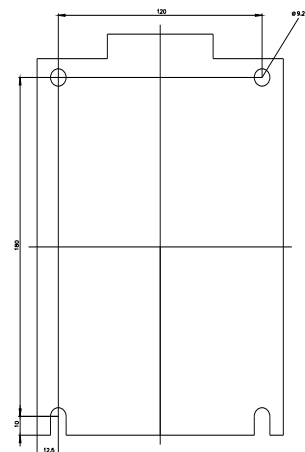
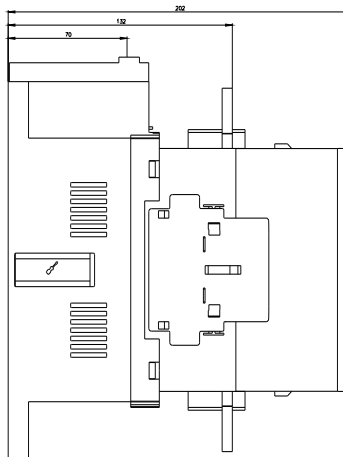
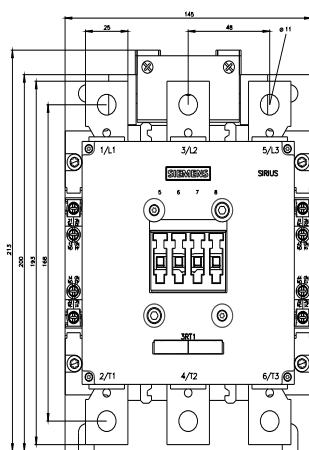
http://www.automation.siemens.com/bilddb/cax_de.aspx?mlfb=3RT1064-6AB36&lang=en

Characteristic: Tripping characteristics, I^2t , Let-through current

<https://support.industry.siemens.com/cs/ww/en/ps/3RT1064-6AB36/char>

Further characteristics (e.g. electrical endurance, switching frequency)

<http://www.automation.siemens.com/bilddb/index.aspx?view=Search&mlfb=3RT1064-6AB36&objecttype=14&gridview=view1>





last modified:

2/10/2023 [🔗](#)