



power contactor, AC-3e/AC-3 225 A, 110 kW / 400 V AC (50-60 Hz) / DC
 Uc: 96-127 V PLC input 24 V DC 3-pole, auxiliary contacts 1 NO + 1 NC
 drive: electronic main circuit: busbar control and auxiliary circuit: screw
 terminal with remaining lifetime indicator

product brand name	SIRIUS
product designation	Power contactor
product type designation	3RT1

General technical data

size of contactor	S10
product extension	
• function module for communication	No
• auxiliary switch	Yes
power loss [W] for rated value of the current	
• at AC in hot operating state	51 W
• at AC in hot operating state per pole	17 W
• without load current share typical	3.4 W
insulation voltage	
• of main circuit with degree of pollution 3 rated value	1 000 V
• of auxiliary circuit with degree of pollution 3 rated value	500 V
surge voltage resistance	
• of main circuit rated value	8 kV
• of auxiliary circuit rated value	6 kV
maximum permissible voltage for safe isolation between coil and main contacts according to EN 60947-1	690 V
shock resistance at rectangular impulse	
• at AC	8,5g / 5 ms, 4,2g / 10 ms
• at DC	8,5g / 5 ms, 4,2g / 10 ms
shock resistance with sine pulse	
• at AC	13,4g / 5 ms, 6,5g / 10 ms
• at DC	13,4g / 5 ms, 6,5g / 10 ms
mechanical service life (operating cycles)	
• of contactor typical	10 000 000
• of the contactor with added electronically optimized auxiliary switch block typical	5 000 000
• of the contactor with added auxiliary switch block typical	10 000 000
reference code according to IEC 81346-2	Q
Substance Prohibition (Date)	05/01/2012

Ambient conditions

installation altitude at height above sea level maximum	2 000 m
ambient temperature	
• during operation	-25 ... +60 °C
• during storage	-55 ... +80 °C
relative humidity minimum	10 %
relative humidity at 55 °C according to IEC 60068-2-30 maximum	95 %

Main circuit

number of poles for main current circuit	3
number of NO contacts for main contacts	3
operating voltage	
• at AC-3 rated value maximum	1 000 V
• at AC-3e rated value maximum	1 000 V
operational current	
• at AC-1 at 400 V at ambient temperature 40 °C rated value	275 A
• at AC-1	
— up to 690 V at ambient temperature 40 °C rated value	275 A
— up to 690 V at ambient temperature 60 °C rated value	250 A
— up to 1000 V at ambient temperature 40 °C rated value	100 A
— up to 1000 V at ambient temperature 60 °C rated value	100 A
• at AC-3	
— at 400 V rated value	225 A
— at 500 V rated value	225 A
— at 690 V rated value	225 A
— at 1000 V rated value	68 A
• at AC-3e	
— at 400 V rated value	225 A
— at 500 V rated value	225 A
— at 1000 V rated value	68 A
• at AC-4 at 400 V rated value	195 A
• at AC-5a up to 690 V rated value	242 A
• at AC-5b up to 400 V rated value	186 A
• at AC-6a	
— up to 230 V for current peak value n=20 rated value	225 A
— up to 400 V for current peak value n=20 rated value	225 A
— up to 500 V for current peak value n=20 rated value	225 A
— up to 690 V for current peak value n=20 rated value	225 A
— up to 1000 V for current peak value n=20 rated value	68 A
• at AC-6a	
— up to 230 V for current peak value n=30 rated value	172 A
— up to 400 V for current peak value n=30 rated value	172 A
— up to 500 V for current peak value n=30 rated value	172 A
— up to 690 V for current peak value n=30 rated value	172 A
— up to 1000 V for current peak value n=30 rated value	68 A
minimum cross-section in main circuit at maximum AC-1 rated value	150 mm ²
operational current for approx. 200000 operating cycles at AC-4	
• at 400 V rated value	96 A
• at 690 V rated value	85 A
operational current	
• at 1 current path at DC-1	
— at 24 V rated value	200 A
— at 60 V rated value	200 A
— at 110 V rated value	18 A
— at 220 V rated value	3.4 A
— at 440 V rated value	0.8 A
— at 600 V rated value	0.5 A
• with 2 current paths in series at DC-1	

— at 24 V rated value	200 A
— at 60 V rated value	200 A
— at 110 V rated value	200 A
— at 220 V rated value	20 A
— at 440 V rated value	3.2 A
— at 600 V rated value	1.6 A
● with 3 current paths in series at DC-1	
— at 24 V rated value	200 A
— at 60 V rated value	200 A
— at 110 V rated value	200 A
— at 220 V rated value	200 A
— at 440 V rated value	11 A
— at 600 V rated value	4 A
● at 1 current path at DC-3 at DC-5	
— at 24 V rated value	200 A
— at 60 V rated value	7.5 A
— at 220 V rated value	0.6 A
— at 440 V rated value	0.17 A
— at 600 V rated value	0.12 A
● with 2 current paths in series at DC-3 at DC-5	
— at 24 V rated value	200 A
— at 60 V rated value	200 A
— at 110 V rated value	200 A
— at 220 V rated value	2.5 A
— at 440 V rated value	0.65 A
— at 600 V rated value	0.37 A
● with 3 current paths in series at DC-3 at DC-5	
— at 24 V rated value	200 A
— at 60 V rated value	200 A
— at 110 V rated value	200 A
— at 220 V rated value	200 A
— at 440 V rated value	1.4 A
— at 600 V rated value	0.75 A
operating power	
● at AC-3	
— at 230 V rated value	55 kW
— at 400 V rated value	110 kW
— at 500 V rated value	160 kW
— at 690 V rated value	200 kW
— at 1000 V rated value	90 kW
● at AC-3e	
— at 230 V rated value	55 kW
— at 400 V rated value	110 kW
— at 500 V rated value	160 kW
— at 1000 V rated value	90 kW
operating power for approx. 200000 operating cycles at AC-4	
● at 400 V rated value	54 kW
● at 690 V rated value	82 kW
operating apparent power at AC-6a	
● up to 230 V for current peak value n=20 rated value	90 000 kVA
● up to 400 V for current peak value n=20 rated value	150 000 VA
● up to 500 V for current peak value n=20 rated value	190 000 VA
● up to 690 V for current peak value n=20 rated value	260 000 VA
● up to 1000 V for current peak value n=20 rated value	110 000 VA
operating apparent power at AC-6a	
● up to 230 V for current peak value n=30 rated value	60 000 VA
● up to 400 V for current peak value n=30 rated value	110 000 VA
● up to 500 V for current peak value n=30 rated value	140 000 VA
● up to 690 V for current peak value n=30 rated value	200 000 VA
● up to 1000 V for current peak value n=30 rated value	110 000 VA
short-time withstand current in cold operating state up to 40 °C	

<ul style="list-style-type: none"> • limited to 1 s switching at zero current maximum • limited to 5 s switching at zero current maximum • limited to 10 s switching at zero current maximum • limited to 30 s switching at zero current maximum • limited to 60 s switching at zero current maximum 	4 000 A; Use minimum cross-section acc. to AC-1 rated value 2 807 A; Use minimum cross-section acc. to AC-1 rated value 2 082 A; Use minimum cross-section acc. to AC-1 rated value 1 397 A; Use minimum cross-section acc. to AC-1 rated value 1 144 A; Use minimum cross-section acc. to AC-1 rated value
no-load switching frequency	
<ul style="list-style-type: none"> • at AC • at DC 	1 000 1/h 1 000 1/h
operating frequency	
<ul style="list-style-type: none"> • at AC-1 maximum • at AC-2 maximum • at AC-3 maximum • at AC-3e maximum • at AC-4 maximum 	750 1/h 250 1/h 500 1/h 500 1/h 130 1/h
Control circuit/ Control	
type of voltage of the control supply voltage	AC/DC
control supply voltage at AC	
<ul style="list-style-type: none"> • at 50 Hz rated value • at 60 Hz rated value 	96 ... 127 V 96 ... 127 V
control supply voltage at DC	
<ul style="list-style-type: none"> • rated value 	96 ... 127 V
type of PLC-control input according to IEC 60947-1	Type 2
consumed current at PLC-control input according to IEC 60947-1 maximum	20 mA
voltage at PLC-control input rated value	24 V
operating range factor of the voltage at PLC-control input	0.8 ... 1.1
operating range factor control supply voltage rated value of magnet coil at DC	
<ul style="list-style-type: none"> • initial value • full-scale value 	0.8 1.1
operating range factor control supply voltage rated value of magnet coil at AC	
<ul style="list-style-type: none"> • at 50 Hz • at 60 Hz 	0.8 ... 1.1 0.8 ... 1.1
design of the surge suppressor	with varistor
apparent pick-up power of magnet coil at AC	
<ul style="list-style-type: none"> • at 50 Hz • at 60 Hz 	530 VA 530 VA
inductive power factor with closing power of the coil	
<ul style="list-style-type: none"> • at 50 Hz • at 60 Hz 	0.8 0.8
apparent holding power of magnet coil at AC	
<ul style="list-style-type: none"> • at 50 Hz • at 60 Hz 	8.5 VA 8.5 VA
inductive power factor with the holding power of the coil	
<ul style="list-style-type: none"> • at 50 Hz • at 60 Hz 	0.4 0.4
closing power of magnet coil at DC	580 W
holding power of magnet coil at DC	3.4 W
closing delay	
<ul style="list-style-type: none"> • at AC • at DC 	45 ... 80 ms 45 ... 80 ms
opening delay	
<ul style="list-style-type: none"> • at AC • at DC 	80 ... 100 ms 80 ... 100 ms
arcing time	10 ... 15 ms
control version of the switch operating mechanism	PLC-IN or Standard A1 - A2 (adjustable)
Auxiliary circuit	
number of NC contacts for auxiliary contacts	1
instantaneous contact	
number of NO contacts for auxiliary contacts	1
instantaneous contact	
operational current at AC-12 maximum	10 A

operational current at AC-15

- at 230 V rated value
- at 400 V rated value
- at 500 V rated value
- at 690 V rated value

6 A
3 A
2 A
1 A

operational current at DC-12

- at 24 V rated value
- at 48 V rated value
- at 60 V rated value
- at 110 V rated value
- at 125 V rated value
- at 220 V rated value
- at 600 V rated value

10 A
6 A
6 A
3 A
2 A
1 A
0.15 A

operational current at DC-13

- at 24 V rated value
- at 48 V rated value
- at 60 V rated value
- at 110 V rated value
- at 125 V rated value
- at 220 V rated value
- at 600 V rated value

10 A
2 A
2 A
1 A
0.9 A
0.3 A
0.1 A

contact reliability of auxiliary contacts

1 faulty switching per 100 million (17 V, 1 mA)

UL/CSA ratings**full-load current (FLA) for 3-phase AC motor**

- at 480 V rated value
- at 600 V rated value

180 A
192 A

yielded mechanical performance [hp]

- for 3-phase AC motor
 - at 200/208 V rated value
 - at 220/230 V rated value
 - at 460/480 V rated value
 - at 575/600 V rated value

60 hp
75 hp
150 hp
200 hp

contact rating of auxiliary contacts according to UL

A600 / Q600

Short-circuit protection**design of the fuse link**

- for short-circuit protection of the main circuit
 - with type of coordination 1 required
 - with type of assignment 2 required
- for short-circuit protection of the auxiliary switch required

gG: 500 A (690 V, 100 kA)
gG: 400 A (690 V, 100 kA), aM: 315 A (690 V, 50 kA), BS88: 400 A (415 V, 50 kA)
gG: 10 A (500 V, 1 kA)

Installation/ mounting/ dimensions**mounting position**

with vertical mounting surface +/-90° rotatable, with vertical mounting surface +/- 22.5° tiltable to the front and back

fastening method

screw fixing

- side-by-side mounting

Yes

height

210 mm

width

165 mm

depth

202 mm

required spacing

- with side-by-side mounting
 - forwards
 - upwards
 - downwards
 - at the side
- for grounded parts
 - forwards
 - upwards
 - at the side
 - downwards
- for live parts
 - forwards
 - upwards
 - downwards

20 mm
10 mm
10 mm
0 mm

20 mm
10 mm
10 mm
10 mm

20 mm
10 mm
10 mm

— at the side

10 mm

Connections/ Terminals

type of electrical connection

- for main current circuit
- for auxiliary and control circuit
- at contactor for auxiliary contacts
- of magnet coil

width of connection bar

thickness of connection bar

diameter of holes

number of holes

connectable conductor cross-section for main contacts

- stranded

connectable conductor cross-section for auxiliary contacts

- solid or stranded
- finely stranded with core end processing

type of connectable conductor cross-sections

- for auxiliary contacts
 - solid
 - solid or stranded
 - finely stranded with core end processing
- at AWG cables for auxiliary contacts

AWG number as coded connectable conductor cross section

- for auxiliary contacts

Connection bar

screw-type terminals

Screw-type terminals

Screw-type terminals

25 mm

6 mm

11 mm

1

70 ... 240 mm²

0.5 ... 4 mm²

0.5 ... 2.5 mm²

2x (0.5 ... 1.5 mm²), 2x (0.75 ... 2.5 mm²), max. 2x (0.75 ... 4 mm²)

2x (0.5 ... 1.5 mm²), 2x (0.75 ... 2.5 mm²), max. 2x (0.75 ... 4 mm²)

2x (0.5 ... 1.5 mm²), 2x (0.75 ... 2.5 mm²)

2x (20 ... 16), 2x (18 ... 14), 1x 12

18 ... 14

Safety related data

product function

- mirror contact according to IEC 60947-4-1
- positively driven operation according to IEC 60947-5-1

B10 value with high demand rate according to SN 31920

T1 value for proof test interval or service life according to IEC 61508

protection class IP on the front according to IEC 60529

touch protection on the front according to IEC 60529

suitability for use

- safety-related switching OFF

Yes

No

1 000 000

20 a

IP00; IP20 with box terminal/cover

finger-safe, for vertical contact from the front with box terminal/cover

Yes

Certificates/ approvals

General Product Approval



[Confirmation](#)



[KC](#)



EMC	Functional Safety/Safety of Machinery	Declaration of Conformity	Test Certificates
-----	---------------------------------------	---------------------------	-------------------



[Type Examination Certificate](#)



EG-Konf.

[Type Test Certificates/Test Report](#)

[Special Test Certificate](#)

Marine / Shipping

other



[Confirmation](#)

other

Railway

[Miscellaneous](#)

[Miscellaneous](#)

[Confirmation](#)

[Vibration and Shock](#)

[Special Test Certificate](#)

Further information

Information on the packaging

<https://support.industry.siemens.com/cs/ww/en/view/109813875>

Information- and Downloadcenter (Catalogs, Brochures,...)

<https://www.siemens.com/ic10>

Industry Mall (Online ordering system)

<https://mall.industry.siemens.com/mall/en/en/Catalog/product?mlfb=3RT1064-6PF35>

Cax online generator

<http://support.automation.siemens.com/WW/CAXorder/default.aspx?lang=en&mlfb=3RT1064-6PF35>

Service&Support (Manuals, Certificates, Characteristics, FAQs,...)

<https://support.industry.siemens.com/cs/ww/en/ps/3RT1064-6PF35>

Image database (product images, 2D dimension drawings, 3D models, device circuit diagrams, EPLAN macros, ...)

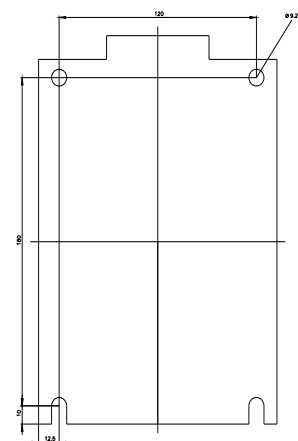
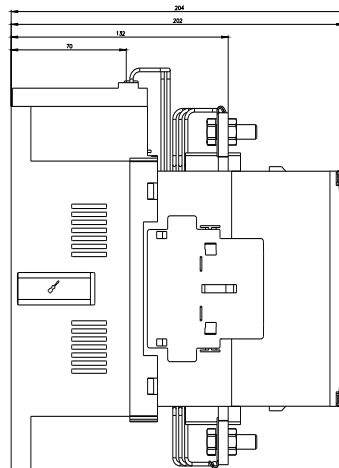
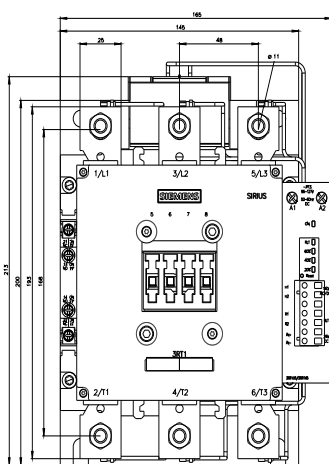
http://www.automation.siemens.com/bilddb/cax_de.aspx?mlfb=3RT1064-6PF35&lang=en

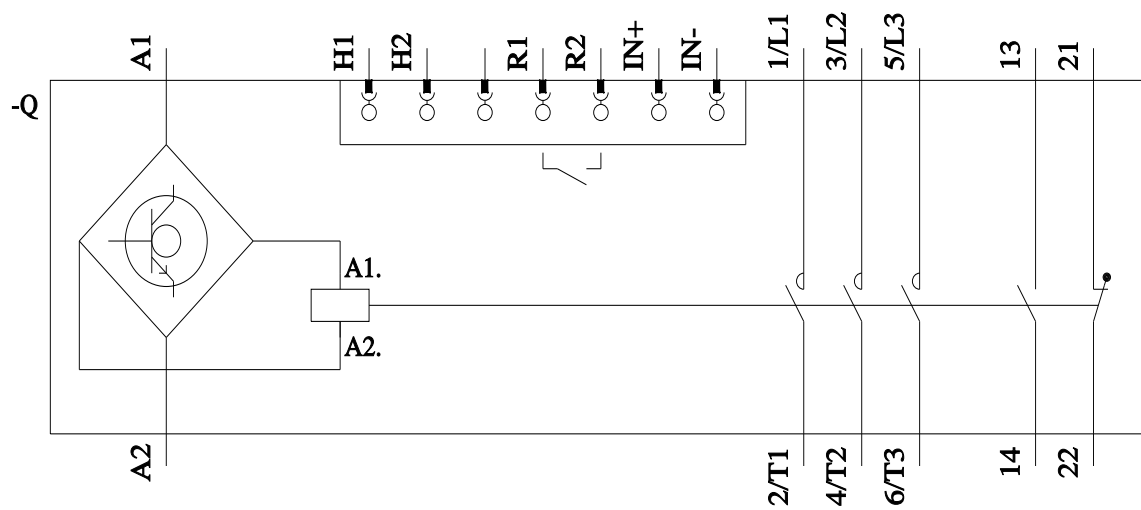
Characteristic: Tripping characteristics, I^2t , Let-through current

<https://support.industry.siemens.com/cs/ww/en/ps/3RT1064-6PF35/char>

Further characteristics (e.g. electrical endurance, switching frequency)

<http://www.automation.siemens.com/bilddb/index.aspx?view=Search&mlfb=3RT1064-6PF35&objecttype=14&gridview=view1>





last modified:

2/10/2023 [🔗](#)