



power contactor, AC-3e/AC-3, 95 A, 45 kW / 400 V, 3-pole, 24 V DC, 0.8-1.2* Us, with integrated varistor, auxiliary contacts: 1 NO + 1 NC, screw terminal, suitable for PLC outputs, upright mounting position

product brand name	SIRIUS
product designation	Coupling contactor
product type designation	3RT2

General technical data

size of contactor	S3
product extension	
• function module for communication	No
• auxiliary switch	Yes
power loss [W] for rated value of the current	
• at AC in hot operating state	19.8 W
• at AC in hot operating state per pole	6.6 W
• without load current share typical	0.9 W
insulation voltage	
• of main circuit with degree of pollution 3 rated value	1 000 V
• of auxiliary circuit with degree of pollution 3 rated value	690 V
surge voltage resistance	
• of main circuit rated value	8 kV
• of auxiliary circuit rated value	6 kV
maximum permissible voltage for safe isolation between coil and main contacts according to EN 60947-1	690 V
shock resistance at rectangular impulse	
• at AC	10.3g / 5 ms, 6.3g / 10 ms
• at DC	6.3 g / 5 ms, 3.6 g / 10 ms
shock resistance with sine pulse	
• at AC	16.3g / 5 ms, 10.g / 10 ms
• at DC	9.8 g / 5 ms, 5.6 g / 10 ms
mechanical service life (operating cycles)	
• of contactor typical	10 000 000
• of the contactor with added electronically optimized auxiliary switch block typical	5 000 000
• of the contactor with added auxiliary switch block typical	10 000 000
reference code according to IEC 81346-2	Q
Substance Prohibition (Date)	03/01/2017

Ambient conditions

installation altitude at height above sea level maximum	2 000 m
ambient temperature	
• during operation	-25 ... +60 °C
• during storage	-55 ... +80 °C
relative humidity minimum	10 %
relative humidity at 55 °C according to IEC 60068-2-30 maximum	95 %

Main circuit

number of poles for main current circuit	3
number of NO contacts for main contacts	3
operating voltage	
• at AC-3 rated value maximum	1 000 V
• at AC-3e rated value maximum	1 000 V
operational current	
• at AC-1 at 400 V at ambient temperature 40 °C rated value	130 A
• at AC-1	
— up to 690 V at ambient temperature 40 °C rated value	130 A
— up to 690 V at ambient temperature 60 °C rated value	110 A
• at AC-3	
— at 400 V rated value	95 A
— at 500 V rated value	95 A
— at 690 V rated value	78 A
— at 1000 V rated value	30 A
• at AC-3e	
— at 400 V rated value	95 A
— at 500 V rated value	95 A
— at 690 V rated value	78 A
— at 1000 V rated value	30 A
• at AC-4 at 400 V rated value	80 A
• at AC-5a up to 690 V rated value	114 A
• at AC-5b up to 400 V rated value	95 A
• at AC-6a	
— up to 230 V for current peak value n=20 rated value	84.4 A
— up to 400 V for current peak value n=20 rated value	84.4 A
— up to 500 V for current peak value n=20 rated value	84.4 A
— up to 690 V for current peak value n=20 rated value	58 A
• at AC-6a	
— up to 230 V for current peak value n=30 rated value	56.3 A
— up to 400 V for current peak value n=30 rated value	56.3 A
— up to 500 V for current peak value n=30 rated value	56.3 A
— up to 690 V for current peak value n=30 rated value	56.3 A
minimum cross-section in main circuit at maximum AC-1 rated value	50 mm ²
operational current for approx. 200000 operating cycles at AC-4	
• at 400 V rated value	42 A
• at 690 V rated value	30 A
operational current	
• at 1 current path at DC-1	
— at 24 V rated value	100 A
— at 60 V rated value	60 A
— at 110 V rated value	9 A
— at 220 V rated value	2 A
— at 440 V rated value	0.6 A
— at 600 V rated value	0.4 A
• with 2 current paths in series at DC-1	
— at 24 V rated value	100 A
— at 60 V rated value	100 A
— at 110 V rated value	100 A
— at 220 V rated value	10 A
— at 440 V rated value	1.8 A
— at 600 V rated value	1 A

<ul style="list-style-type: none"> • with 3 current paths in series at DC-1 <ul style="list-style-type: none"> — at 24 V rated value — at 60 V rated value — at 110 V rated value — at 220 V rated value — at 440 V rated value — at 600 V rated value • at 1 current path at DC-3 at DC-5 <ul style="list-style-type: none"> — at 24 V rated value — at 60 V rated value — at 110 V rated value — at 220 V rated value — at 440 V rated value — at 600 V rated value • with 2 current paths in series at DC-3 at DC-5 <ul style="list-style-type: none"> — at 24 V rated value — at 60 V rated value — at 110 V rated value — at 220 V rated value — at 440 V rated value — at 600 V rated value • with 3 current paths in series at DC-3 at DC-5 <ul style="list-style-type: none"> — at 24 V rated value — at 60 V rated value — at 110 V rated value — at 220 V rated value — at 440 V rated value — at 600 V rated value 		100 A 100 A 100 A 80 A 4.5 A 2.6 A
		40 A 6 A 2.5 A 1 A 0.15 A 0.06 A
		100 A 100 A 100 A 7 A 0.42 A 0.16 A
		100 A 100 A 100 A 35 A 0.8 A 0.35 A
operating power		
<ul style="list-style-type: none"> • at AC-2 at 400 V rated value • at AC-3 <ul style="list-style-type: none"> — at 230 V rated value — at 400 V rated value — at 500 V rated value — at 690 V rated value — at 1000 V rated value • at AC-3e <ul style="list-style-type: none"> — at 230 V rated value — at 400 V rated value — at 500 V rated value — at 690 V rated value — at 1000 V rated value 		45 kW 22 kW 45 kW 55 kW 75 kW 37 kW 22 kW 45 kW 55 kW 75 kW 37 kW
operating power for approx. 200000 operating cycles at AC-4		
<ul style="list-style-type: none"> • at 400 V rated value • at 690 V rated value 		22 kW 27.4 kW
operating apparent power at AC-6a		
<ul style="list-style-type: none"> • up to 230 V for current peak value n=20 rated value • up to 400 V for current peak value n=20 rated value • up to 500 V for current peak value n=20 rated value • up to 690 V for current peak value n=20 rated value 		33 kVA 58 kVA 73 kVA 69 kVA
operating apparent power at AC-6a		
<ul style="list-style-type: none"> • up to 230 V for current peak value n=30 rated value • up to 400 V for current peak value n=30 rated value • up to 500 V for current peak value n=30 rated value • up to 690 V for current peak value n=30 rated value 		22.4 kVA 39 kVA 48.7 kVA 67.3 kVA
short-time withstand current in cold operating state up to 40 °C		
<ul style="list-style-type: none"> • limited to 1 s switching at zero current maximum • limited to 5 s switching at zero current maximum • limited to 10 s switching at zero current maximum • limited to 30 s switching at zero current maximum • limited to 60 s switching at zero current maximum 		1 725 A; Use minimum cross-section acc. to AC-1 rated value 1 297 A; Use minimum cross-section acc. to AC-1 rated value 946 A; Use minimum cross-section acc. to AC-1 rated value 610 A; Use minimum cross-section acc. to AC-1 rated value 486 A; Use minimum cross-section acc. to AC-1 rated value
no-load switching frequency		

<ul style="list-style-type: none"> • at DC 	1 000 1/h
operating frequency	
<ul style="list-style-type: none"> • at AC-1 maximum • at AC-2 maximum • at AC-3 maximum • at AC-3e maximum • at AC-4 maximum 	900 1/h 350 1/h 850 1/h 850 1/h 250 1/h
Control circuit/ Control	
type of voltage of the control supply voltage	DC
control supply voltage at DC	
<ul style="list-style-type: none"> • rated value 	24 V
operating range factor control supply voltage rated value of magnet coil at DC	
<ul style="list-style-type: none"> • initial value • full-scale value 	0.8 1.2
design of the surge suppressor	with varistor
inrush current peak	2.7 A
duration of inrush current peak	50 µs
locked-rotor current mean value	0.9 A
locked-rotor current peak	2.1 A
duration of locked-rotor current	150 ms
holding current mean value	40 mA
closing power of magnet coil at DC	25 W
holding power of magnet coil at DC	0.9 W
closing delay	
<ul style="list-style-type: none"> • at DC 	50 ... 70 ms
opening delay	
<ul style="list-style-type: none"> • at DC 	38 ... 57 ms
arcing time	10 ... 20 ms
control version of the switch operating mechanism	Standard A1 - A2
Auxiliary circuit	
number of NC contacts for auxiliary contacts instantaneous contact	1
number of NO contacts for auxiliary contacts instantaneous contact	1
operational current at AC-12 maximum	10 A
operational current at AC-15	
<ul style="list-style-type: none"> • at 230 V rated value • at 400 V rated value • at 500 V rated value • at 690 V rated value 	6 A 3 A 2 A 1 A
operational current at DC-12	
<ul style="list-style-type: none"> • at 24 V rated value • at 48 V rated value • at 60 V rated value • at 110 V rated value • at 125 V rated value • at 220 V rated value • at 600 V rated value 	10 A 6 A 6 A 3 A 2 A 1 A 0.15 A
operational current at DC-13	
<ul style="list-style-type: none"> • at 24 V rated value • at 48 V rated value • at 60 V rated value • at 110 V rated value • at 125 V rated value • at 220 V rated value • at 600 V rated value 	10 A 2 A 2 A 1 A 0.9 A 0.3 A 0.1 A
contact reliability of auxiliary contacts	1 faulty switching per 100 million (17 V, 1 mA)
UL/CSA ratings	
full-load current (FLA) for 3-phase AC motor	
<ul style="list-style-type: none"> • at 480 V rated value • at 600 V rated value 	96 A 77 A
yielded mechanical performance [hp]	
<ul style="list-style-type: none"> • for single-phase AC motor 	

<ul style="list-style-type: none"> — at 110/120 V rated value — at 230 V rated value • for 3-phase AC motor <ul style="list-style-type: none"> — at 200/208 V rated value — at 220/230 V rated value — at 460/480 V rated value — at 575/600 V rated value 	10 hp 20 hp 30 hp 30 hp 75 hp 75 hp A600 / P600
contact rating of auxiliary contacts according to UL	
Short-circuit protection	
design of the fuse link <ul style="list-style-type: none"> • for short-circuit protection of the main circuit <ul style="list-style-type: none"> — with type of coordination 1 required — with type of assignment 2 required • for short-circuit protection of the auxiliary switch required 	gG: 250 A (690 V, 100 kA), aM: 160 A (690 V, 100 kA), BS88: 200 A (415 V, 80 kA) gG: 160 A (690 V, 100 kA), aM: 100 A (690 V, 100 kA), BS88: 125 A (415 V, 80 kA) gG: 10 A (500 V, 1 kA)
Installation/ mounting/ dimensions	
mounting position fastening method <ul style="list-style-type: none"> • side-by-side mounting height width depth required spacing <ul style="list-style-type: none"> • with side-by-side mounting <ul style="list-style-type: none"> — forwards — upwards — downwards — at the side • for grounded parts <ul style="list-style-type: none"> — forwards — upwards — at the side — downwards • for live parts <ul style="list-style-type: none"> — forwards — upwards — downwards — at the side 	standing, on horizontal mounting surface screw and snap-on mounting onto 35 mm DIN rail according to DIN EN 60715 Yes 140 mm 70 mm 152 mm 20 mm 10 mm 10 mm 0 mm 20 mm 10 mm 10 mm 10 mm 20 mm 10 mm 10 mm 10 mm
Connections/ Terminals	
type of electrical connection <ul style="list-style-type: none"> • for main current circuit • for auxiliary and control circuit • at contactor for auxiliary contacts • of magnet coil type of connectable conductor cross-sections for main contacts <ul style="list-style-type: none"> • finely stranded with core end processing connectable conductor cross-section for main contacts <ul style="list-style-type: none"> • solid • stranded • finely stranded with core end processing connectable conductor cross-section for auxiliary contacts <ul style="list-style-type: none"> • solid or stranded • finely stranded with core end processing type of connectable conductor cross-sections <ul style="list-style-type: none"> • for auxiliary contacts <ul style="list-style-type: none"> — solid or stranded — finely stranded with core end processing • at AWG cables for auxiliary contacts 	screw-type terminals screw-type terminals Screw-type terminals Screw-type terminals 2x (2.5 ... 35 mm ²), 1x (2.5 ... 50 mm ²) 2.5 ... 16 mm ² 6 ... 70 mm ² 2.5 ... 50 mm ² 0.5 ... 2.5 mm ² 0.5 ... 2.5 mm ² 2x (0.5 ... 1.5 mm ²), 2x (0.75 ... 2.5 mm ²) 2x (0.5 ... 1.5 mm ²), 2x (0.75 ... 2.5 mm ²) 2x (20 ... 16), 2x (18 ... 14)

AWG number as coded connectable conductor cross section

- for main contacts 10 ... 2
- for auxiliary contacts 20 ... 14

Safety related data**product function**

- mirror contact according to IEC 60947-4-1 Yes
- positively driven operation according to IEC 60947-5-1 No

B10 value with high demand rate according to SN 31920 1 000 000

proportion of dangerous failures

- with low demand rate according to SN 31920 40 %
- with high demand rate according to SN 31920 73 %

failure rate [FIT] with low demand rate according to SN 31920 100 FIT

T1 value for proof test interval or service life according to IEC 61508 20 a

protection class IP on the front according to IEC 60529 IP20**touch protection on the front according to IEC 60529** finger-safe, for vertical contact from the front**suitability for use**

- safety-related switching on No
- safety-related switching OFF Yes

Certificates/ approvals**General Product Approval**[Confirmation](#)[KC](#)**EMC****Functional Safety/Safety of Machinery****Declaration of Conformity****Test Certificates**[Type Examination Certificate](#)

EG-Konf.

[Type Test Certificates/Test Report](#)[Special Test Certificate](#)**Marine / Shipping**

LRS



PRS



RINA



RMRS

other**Railway**[Confirmation](#)[Vibration and Shock](#)**Further information****Information on the packaging**<https://support.industry.siemens.com/cs/ww/en/view/109813875>**Information- and Downloadcenter (Catalogs, Brochures,...)**<https://www.siemens.com/ic10>**Industry Mall (Online ordering system)**

<https://mall.industry.siemens.com/mall/en/en/Catalog/product?mlfb=3RT2046-1KB40-1AA0>

Cax online generator

<http://support.automation.siemens.com/WW/CAXorder/default.aspx?lang=en&mlfb=3RT2046-1KB40-1AA0>

Service&Support (Manuals, Certificates, Characteristics, FAQs,...)

<https://support.industry.siemens.com/cs/ww/en/ps/3RT2046-1KB40-1AA0>

Image database (product images, 2D dimension drawings, 3D models, device circuit diagrams, EPLAN macros, ...)

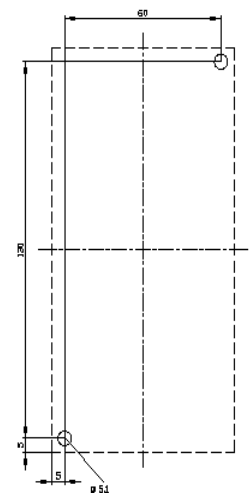
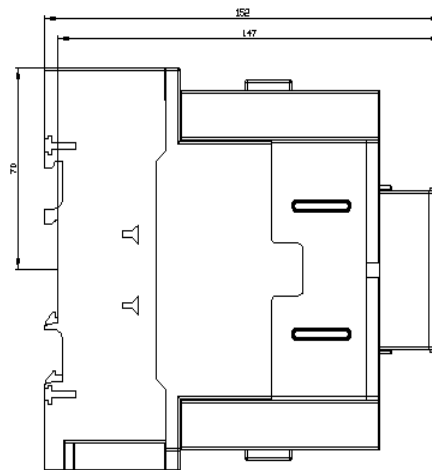
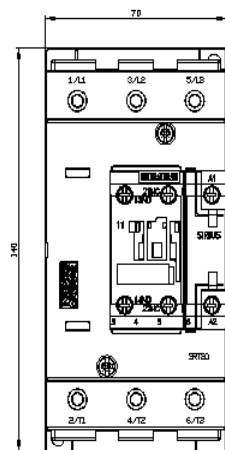
http://www.automation.siemens.com/bilddb/cax_de.aspx?mlfb=3RT2046-1KB40-1AA0&lang=en

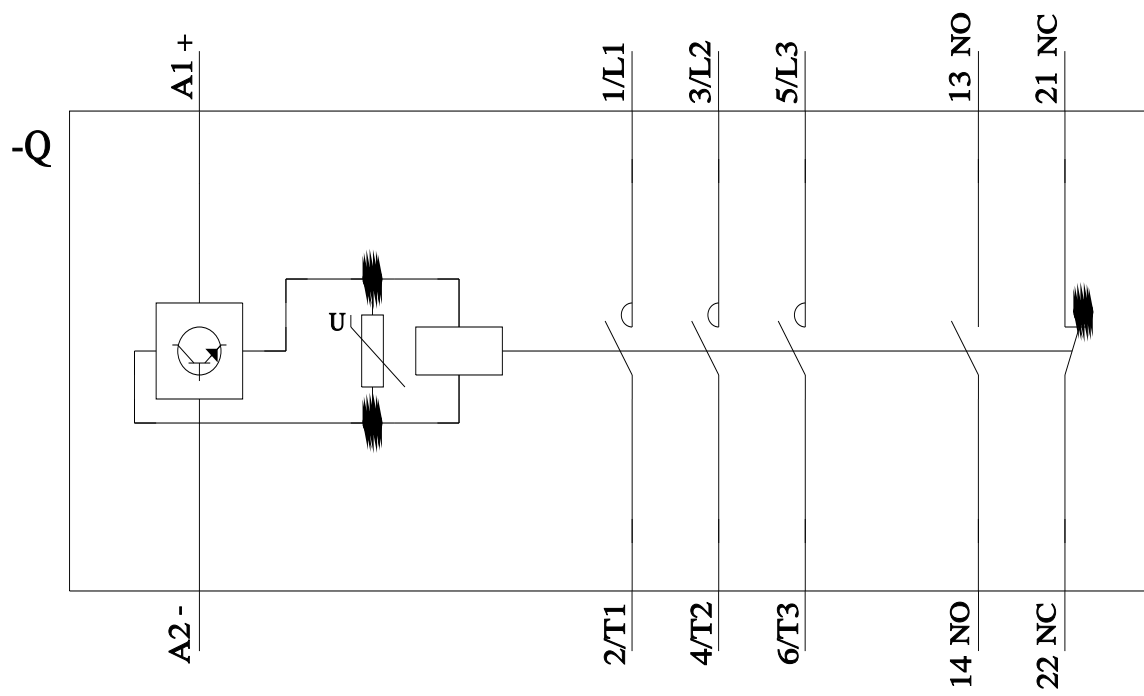
Characteristic: Tripping characteristics, I^2t , Let-through current

<https://support.industry.siemens.com/cs/ww/en/ps/3RT2046-1KB40-1AA0/char>

Further characteristics (e.g. electrical endurance, switching frequency)

<http://www.automation.siemens.com/bilddb/index.aspx?view=Search&mlfb=3RT2046-1KB40-1AA0&objecttype=14&gridview=view1>





last modified:

2/10/2023 [🔗](#)