



CIRCUIT-BREAKER N-RELEASE 325 A,  
SIZE S2 STARTER PROTECTION,  
50 KA SCREW CONNECTION STANDARD BREAKING  
CAPACITY

### General technical data:

<b>product brand name</b>		SIRIUS
<b>product designation</b>		circuit breaker
<b>Size of the circuit-breaker</b>		S2
<b>Number of poles / for main current circuit</b>		3
<b>Product function</b>		
• removable terminal for auxiliary and control circuit		No
• overload protection		No
• phase disturbance recognition		No
• short-circuit to earth recognition		No
<b>Product component</b>		
• auxiliary switch		No
• undervoltage release mechanism		No
• trip indicator		No
<b>Product extension</b>		
• auxiliary switch		Yes
• optional / motor drive		Yes
<b>Impulse voltage resistance / rated value</b>	V	6,000
<b>Protection class IP / on the front</b>		IP20
<b>Protection against electrical shock</b>		finger-safe

Installation altitude / at a height over sea level / maximum	m	2,000
Resistance against shock		25g / 11 ms
Ambient temperature		
• during transport	°C	-50 ... +80
• during storage	°C	-50 ... +80
• during operating	°C	-20 ... +70
Active power loss / total / typical	W	12

<b>Main circuit:</b>		
Operating voltage / rated value	V	690
type of voltage		AC/DC
Service power / at AC-3 / at 400 V / rated value	kW	11
Operational current / at AC-3 / at 400 V / rated value	A	25
Mechanical operating cycles as operating time / of the main contacts / typical		50,000
Frequency of operation / at AC-3 / according to IEC 60947-6-2	1/h	15

<b>Auxiliary circuit:</b>		
Number of change-over switches / for auxiliary contacts		0

<b>Protection function:</b>		
Breaking capacity limit short-circuit current (I <sub>cu</sub> )		
• at 400 V / rated value	kA	50
• at 500 V / rated value	kA	12
• at 690 V / rated value	kA	5

<b>Installation/mounting/dimensions:</b>		
Type of mounting		screw and snap-on mounting onto 35 mm standard mounting rail according to DIN EN 50022
mounting position		any
Depth	mm	149
Height	mm	140
Width	mm	55

<b>Connections:</b>		
Arrangement of electrical connectors / for main current circuit		front side
Design of the electrical connection		
• for main current circuit		screw-type terminals with box terminals
• for auxiliary and control current circuit		screw-type terminals
Type of the connectable conductor cross-section		
• for main contacts		
• solid		2x (0.75 ... 16 mm <sup>2</sup> )

- finely stranded
  - with conductor end processing
- stranded
- for AWG conductors / for main contacts

2x (0.75 ... 16 mm²), 0.75 ... 25 mm²  
 2x (0.75 ... 25 mm²), 0.75 ... 35 mm²  
 2x (18 ... 2), 1x (18 ... 2)

## Certificates/approvals:

### General Product Approval



### Test Certificates

[Special Test Certificate](#)

### Shipping Approval



### other

[Confirmation](#)

[Declaration of Conformity](#)

[other](#)

[Environmental Confirmations](#)

## Further information:

### Information- and Downloadcenter (Catalogs, Brochures,...)

<http://www.siemens.com/industrial-controls/catalogs>

### Industry Mall (Online ordering system)

<http://www.siemens.com/industrial-controls/mall>

### Cax online generator:

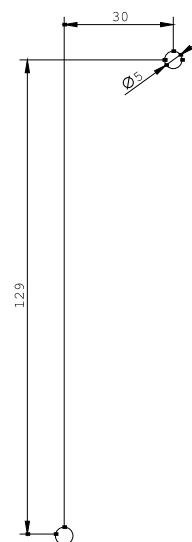
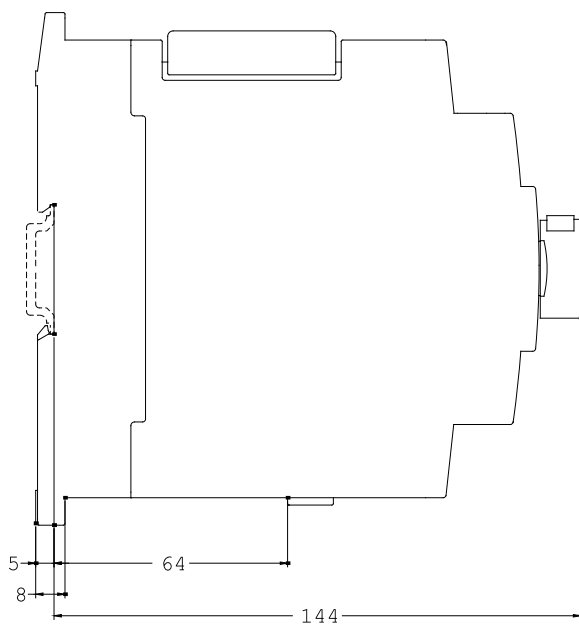
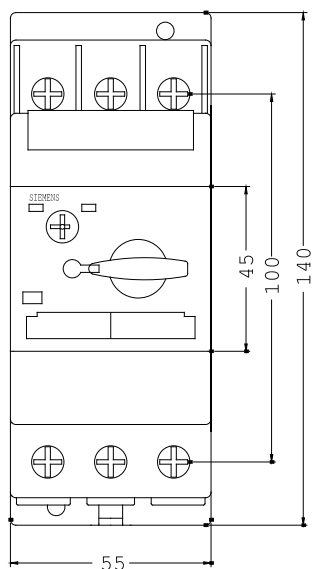
<http://www.siemens.com/cax>

### Service&Support (Manuals, Certificates, Characteristics, FAQs,...)

<http://support.automation.siemens.com/WW/view/en/3RV1331-4DC10/all>

### Image database (product images, 2D dimension drawings, 3D models, device circuit diagrams, ...)

[http://www.automation.siemens.com/bilddb/cax\\_en.aspx?mlfb=3RV1331-4DC10](http://www.automation.siemens.com/bilddb/cax_en.aspx?mlfb=3RV1331-4DC10)



last change:

Feb 11, 2013