



CIRCUIT-BREAKER N-RELEASE 1170 A,  
SIZE S3 STARTER PROTECTION,  
50 KA SCREW CONNECTION STANDARD BREAKING  
CAPACITY

### General technical data:

|  |   |                 |
|--|---|-----------------|
| <b>product brand name</b>                              |   | SIRIUS          |
| <b>product designation</b>                             |   | circuit breaker |
| <b>Size of the circuit-breaker</b>                     |   | S3              |
| <b>Number of poles / for main current circuit</b>      |   | 3               |
| <b>Product function</b>                                |   |                 |
| • removable terminal for auxiliary and control circuit |   | No              |
| • overload protection                                  |   | No              |
| • phase disturbance recognition                        |   | No              |
| • short-circuit to earth recognition                   |   | No              |
| <b>Product component</b>                               |   |                 |
| • auxiliary switch                                     |   | No              |
| • undervoltage release mechanism                       |   | No              |
| • trip indicator                                       |   | No              |
| <b>Product extension</b>                               |   |                 |
| • auxiliary switch                                     |   | Yes             |
| • optional / motor drive                               |   | Yes             |
| <b>Impulse voltage resistance / rated value</b>        | V | 6,000           |
| <b>Protection class IP / on the front</b>              |   | IP20            |
| <b>Protection against electrical shock</b>             |   | finger-safe     |

|  |    |             |
|--|----|-------------|
| Installation altitude / at a height over sea level / maximum | m  | 2,000       |
| Resistance against shock                                     |    | 25g / 11 ms |
| Ambient temperature  |    |             |
| • during transport   | °C | -50 ... +80 |
| • during storage   | °C | -50 ... +80 |
| • during operating   | °C | -20 ... +70 |
| Active power loss / total / typical                          | W  | 30          |

| Main circuit:  |     |        |
|--|-----|--------|
| Operating voltage / rated value  | V   | 690    |
| type of voltage  |     | AC/DC  |
| Service power / at AC-3 / at 400 V / rated value                               | kW  | 45     |
| Operational current / at AC-3 / at 400 V / rated value                         | A   | 90     |
| Mechanical operating cycles as operating time / of the main contacts / typical |     | 50,000 |
| Frequency of operation / at AC-3 / according to IEC 60947-6-2                  | 1/h | 15     |

| Auxiliary circuit:                                      |  |   |
|---|--|---|
| Number of change-over switches / for auxiliary contacts |  | 0 |

| Protection function:   |    |    |
|--|----|----|
| Breaking capacity limit short-circuit current (I <sub>cu</sub> ) |    |    |
| • at 400 V / rated value   | kA | 50 |
| • at 500 V / rated value   | kA | 8  |
| • at 690 V / rated value   | kA | 5  |

| Installation/mounting/dimensions: |    |  |
|-----------------------------------|----|--|
| Type of mounting                  |    | screw and snap-on mounting onto 35 mm standard mounting rail according to DIN EN 50022 |
| mounting position                 |    | any  |
| Depth                             | mm | 174  |
| Height                            | mm | 165  |
| Width                             | mm | 70   |

| Connections:  |  |   |
|---|--|---|
| Arrangement of electrical connectors / for main current circuit |  | front side                              |
| Design of the electrical connection                             |  |   |
| • for main current circuit                                      |  | screw-type terminals with box terminals |
| • for auxiliary and control current circuit                     |  | screw-type terminals                    |
| Type of the connectable conductor cross-section                 |  |   |
| • for main contacts   |  |   |
| • solid   |  | 2x (2.5 ... 16 mm <sup>2</sup> )        |

- finely stranded
  - with conductor end processing
- stranded
- for AWG conductors / for main contacts

2x (2.5 ... 35 mm<sup>2</sup>), 2.5 ... 50 mm<sup>2</sup>  
 2x (10 ... 50 mm<sup>2</sup>), 10 ... 70 mm<sup>2</sup>  
 2x (10 ... 1), 1x (10 ... 2)

## Certificates/approvals:

### General Product Approval



[Special Test Certificate](#)

### Shipping Approval



### other

[Confirmation](#)

[Declaration of Conformity](#)

[other](#)

[Environmental Confirmations](#)

## Further information:

### Information- and Downloadcenter (Catalogs, Brochures,...)

<http://www.siemens.com/industrial-controls/catalogs>

### Industry Mall (Online ordering system)

<http://www.siemens.com/industrial-controls/mall>

### Cax online generator:

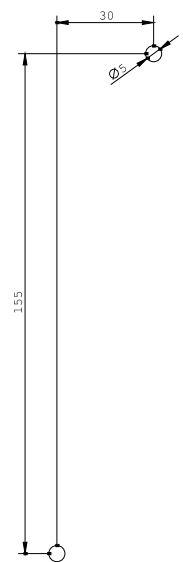
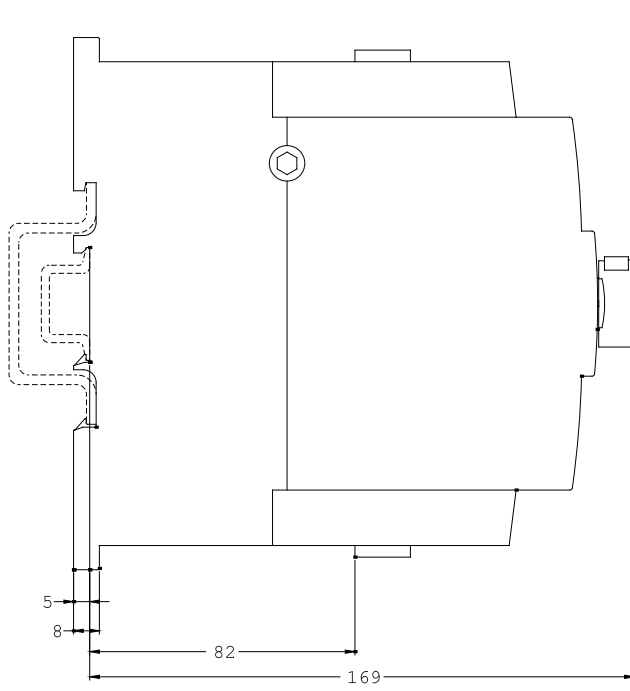
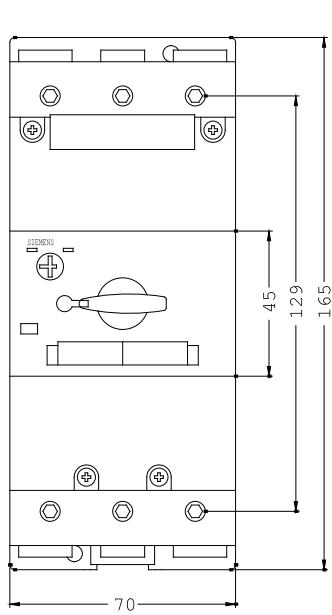
<http://www.siemens.com/cax>

### Service&Support (Manuals, Certificates, Characteristics, FAQs,...)

<http://support.automation.siemens.com/WW/view/en/3RV1341-4LC10/all>

### Image database (product images, 2D dimension drawings, 3D models, device circuit diagrams, ...)

[http://www.automation.siemens.com/bilddb/cax\\_en.aspx?mlfb=3RV1341-4LC10](http://www.automation.siemens.com/bilddb/cax_en.aspx?mlfb=3RV1341-4LC10)



last change:

Feb 11, 2013