

Undervoltage release 230 V AC/50 Hz, 240 V AC/60 Hz for circuit breaker  
Size S00...S3 !!! Phased-out product !!! Successor is SIRIUS 3RV2  
Preferred successor type is >>3RV2902-1AP0<<

### General technical data

product brand name	SIRIUS
product designation	undervoltage release
size of the circuit-breaker	S00, S0, S2, S3
suitability for use	motor circuit breaker
protection class IP on the front according to IEC 60529	IP20
touch protection on the front according to IEC 60529	finger-safe, for vertical contact from the front
design of short-circuit protection	fuse
degree of pollution	3
insulation voltage rated value	690 V
insulation voltage with degree of pollution 3 at AC rated value	690 V
ambient temperature	
• during storage	-50 ... +80 °C
• during operation	-20 ... +60 °C
reference code according to EN 61346-2	F

### Auxiliary circuit

number of NC contacts for auxiliary contacts instantaneous contact	0
number of NO contacts for auxiliary contacts instantaneous contact	0
number of NO contacts for auxiliary contacts leading contact	0
number of CO contacts of auxiliary contacts instantaneous contact	0

### Control circuit/ Control

type of voltage of the control supply voltage	AC
control supply voltage frequency	
• 1	
— initial rated value	50 Hz
— final rated value	60 Hz
control supply voltage	
• 1	
— at AC	
— at 50 Hz rated value	230 V
— at 60 Hz rated value	240 V

### Installation/ mounting/ dimensions

fastening method	snap-on mounting
width	18.5 mm
height	90 mm
depth	68 mm

## Certificates/ approvals

certificate of suitability	CE / UL / CSA		
General Product Approval		Test Certificates	Marine / Shipping



[Confirmation](#)



[Type Test Certificates/Test Report](#)



Marine / Shipping	other
-------------------	-------



[Confirmation](#)



## Further information

Information- and Downloadcenter (Catalogs, Brochures,...)

<https://www.siemens.com/ic10>

Industry Mall (Online ordering system)

<https://mall.industry.siemens.com/mall/en/en/Catalog/product?mlfb=3RV1902-1AP0>

Cax online generator

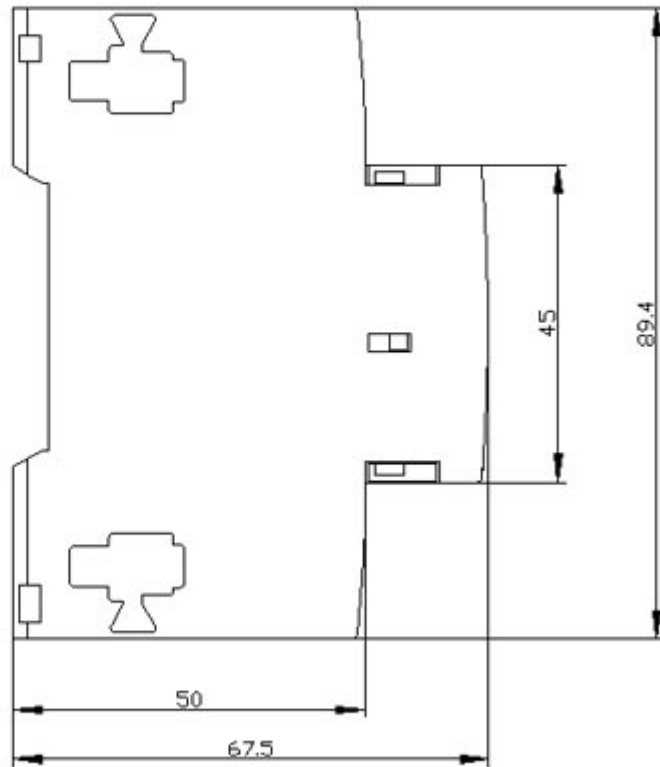
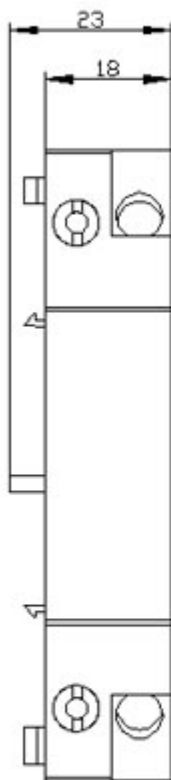
<http://support.automation.siemens.com/WW/CAXorder/default.aspx?lang=en&mlfb=3RV1902-1AP0>

Service&Support (Manuals, Certificates, Characteristics, FAQs,...)

<https://support.industry.siemens.com/cs/ww/en/ps/3RV1902-1AP0>

Image database (product images, 2D dimension drawings, 3D models, device circuit diagrams, EPLAN macros, ...)

[http://www.automation.siemens.com/bilddb/cax\\_de.aspx?mlfb=3RV1902-1AP0&lang=en](http://www.automation.siemens.com/bilddb/cax_de.aspx?mlfb=3RV1902-1AP0&lang=en)



last modified:

12/15/2020 [🔗](#)