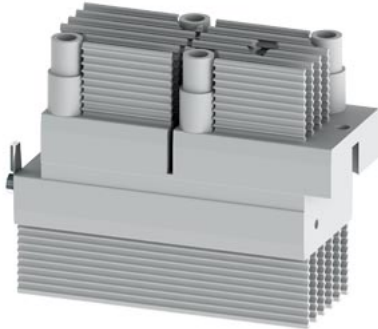


Power semiconductor module 690 V, 3RW4456/4457/4458, 970 A two units for each device



product designation  
Substance Prohibittance (Date)

Power semiconductor module  
05/01/2012

### Certificates/ approvals

General Product Approval	EMC	other
--------------------------	-----	-------

[Confirmation](#)



[Confirmation](#)

### Further information

#### Information on the packaging

<https://support.industry.siemens.com/cs/ww/en/view/109813875>

#### Information- and Downloadcenter (Catalogs, Brochures,...)

<https://www.siemens.com/ic10>

#### Industry Mall (Online ordering system)

<https://mall.industry.siemens.com/mall/en/en/Catalog/product?mlfb=3RW4758-0LC00>

#### Cax online generator

<http://support.automation.siemens.com/WW/CAXorder/default.aspx?lang=en&mlfb=3RW4758-0LC00>

#### Service&Support (Manuals, Certificates, Characteristics, FAQs,...)

<https://support.industry.siemens.com/cs/ww/en/ps/3RW4758-0LC00>

#### Image database (product images, 2D dimension drawings, 3D models, device circuit diagrams, EPLAN macros, ...)

[http://www.automation.siemens.com/bilddb/cax\\_de.aspx?mlfb=3RW4758-0LC00&lang=en](http://www.automation.siemens.com/bilddb/cax_de.aspx?mlfb=3RW4758-0LC00&lang=en)

#### Characteristic: Tripping characteristics, I<sub>t</sub>, Let-through current

<https://support.industry.siemens.com/cs/ww/en/ps/3RW4758-0LC00/char>

#### Characteristic: Installation altitude

<http://www.automation.siemens.com/bilddb/index.aspx?view=Search&mlfb=3RW4758-0LC00&objecttype=14&gridview=view1>

#### Simulation Tool for Soft Starters (STS)

<https://support.industry.siemens.com/cs/ww/en/view/101494917>

last modified:

1/18/2021

