



SIRIUS soft starter 200-480 V 210 A, 24 V AC/DC Screw terminals
Thermistor input

product brand name
product category
product designation
product type designation
manufacturer's article number

- of standard HMI module usable
- of high feature HMI module usable
- of communication module PROFINET standard usable
- of communication module PROFIBUS usable
- of communication module Modbus TCP usable
- of communication module Modbus RTU usable
- of communication module Ethernet/IP
- of circuit breaker usable at 400 V
- of circuit breaker usable at 500 V
- of circuit breaker usable at 400 V at inside-delta circuit
- of circuit breaker usable at 500 V at inside-delta circuit
- of the gG fuse usable up to 690 V
- of the gG fuse usable at inside-delta circuit up to 500 V
- of full range R fuse link for semiconductor protection usable up to 690 V
- of back-up R fuse link for semiconductor protection usable up to 690 V

SIRIUS
Hybrid switching devices
Soft starter
3RW52

- [3RW5980-OHS00](#)
- [3RW5980-OHF00](#)
- [3RW5980-OCS00](#)

- [3RW5980-0CP00](#)
- [3RW5980-0CT00](#)
- [3RW5980-0CR00](#)
- [3RW5980-0CE00](#)

[3VA2325-7MN32-0AA0](#); Type of coordination 1, Iq = 65 kA, CLASS 10

[3VA2325-7MN32-0AA0](#); Type of coordination 1, Iq = 65 kA, CLASS 10

[3VA2440-7MN32-0AA0](#); Type of coordination 1, Iq = 65 kA, CLASS 10

[3VA2440-7MN32-0AA0](#); Type of coordination 1, Iq = 65 kA, CLASS 10

2x3NA3354-6; Type of coordination 1, Iq = 65 kA

2x3NA3354-6; Type of coordination 1, Iq = 65 kA

[3NE1230-2](#); Type of coordination 2, Iq = 65 kA

[3NE3333](#); Type of coordination 2, Iq = 65 kA

General technical data

starting voltage [%]	30 ... 100 %
stopping voltage [%]	50 %; non-adjustable
start-up ramp time of soft starter	0 ... 20 s
current limiting value [%] adjustable	130 ... 700 %
certificate of suitability	
• CE marking	Yes
• UL approval	Yes
• CSA approval	Yes
product component	
• HMI-High Feature	No
• is supported HMI-Standard	Yes
• is supported HMI-High Feature	Yes
product feature integrated bypass contact system	Yes
number of controlled phases	3
trip class	CLASS 10A (default) / 10E / 20E; acc. to IEC 60947-4-2
buffering time in the event of power failure	

<ul style="list-style-type: none"> • for main current circuit • for control circuit 	100 ms
insulation voltage rated value	100 ms
degree of pollution	600 V
impulse voltage rated value	3, acc. to IEC 60947-4-2
blocking voltage of the thyristor maximum	6 kV
service factor	1 600 V
surge voltage resistance rated value	1
maximum permissible voltage for safe isolation	6 kV
<ul style="list-style-type: none"> • between main and auxiliary circuit 	600 V
shock resistance	15 g / 11 ms, from 12 g / 11 ms with potential contact lifting
vibration resistance	15 mm to 6 Hz; 2g to 500 Hz
utilization category according to IEC 60947-4-2	AC 53a
reference code according to IEC 81346-2	Q
Substance Prohibitance (Date)	02/15/2018
product function	
<ul style="list-style-type: none"> • ramp-up (soft starting) • ramp-down (soft stop) • Soft Torque • adjustable current limitation • pump ramp down • intrinsic device protection • motor overload protection 	Yes
	Yes
	Yes
	Yes
	Yes
	Yes
	Yes; Full motor protection (thermistor motor protection and electronic motor overload protection)
	Yes; Type A PTC or Klixon / Thermoclick
<ul style="list-style-type: none"> • evaluation of thermistor motor protection • inside-delta circuit • auto-RESET • manual RESET • remote reset • communication function • operating measured value display • error logbook • via software parameterizable • via software configurable • PROFInergy 	Yes
	Yes
	Yes
	Yes
	Yes; By turning off the control supply voltage
	Yes
	Yes; Only in conjunction with special accessories
	Yes; Only in conjunction with special accessories
	No
	Yes
	Yes; in connection with the PROFINET Standard communication module
	Yes
	Yes
	No
	No

Power Electronics

operational current	
<ul style="list-style-type: none"> • at 40 °C rated value • at 50 °C rated value • at 60 °C rated value 	210 A
	186 A
	170 A
operational current at inside-delta circuit	
<ul style="list-style-type: none"> • at 40 °C rated value • at 50 °C rated value • at 60 °C rated value 	364 A
	322 A
	294 A
operating voltage	
<ul style="list-style-type: none"> • rated value • at inside-delta circuit rated value 	200 ... 480 V
	200 ... 480 V
relative negative tolerance of the operating voltage	-15 %
relative positive tolerance of the operating voltage	10 %
relative negative tolerance of the operating voltage at inside-delta circuit	-15 %
relative positive tolerance of the operating voltage at inside-delta circuit	10 %
operating power for 3-phase motors	
<ul style="list-style-type: none"> • at 230 V at 40 °C rated value • at 230 V at inside-delta circuit at 40 °C rated value • at 400 V at 40 °C rated value • at 400 V at inside-delta circuit at 40 °C rated value 	55 kW
	110 kW
	110 kW
	200 kW
Operating frequency 1 rated value	50 Hz

Operating frequency 2 rated value	60 Hz
relative negative tolerance of the operating frequency	-10 %
relative positive tolerance of the operating frequency	10 %
adjustable motor current	
• at rotary coding switch on switch position 1	90 A
• at rotary coding switch on switch position 2	98 A
• at rotary coding switch on switch position 3	106 A
• at rotary coding switch on switch position 4	114 A
• at rotary coding switch on switch position 5	122 A
• at rotary coding switch on switch position 6	130 A
• at rotary coding switch on switch position 7	138 A
• at rotary coding switch on switch position 8	146 A
• at rotary coding switch on switch position 9	154 A
• at rotary coding switch on switch position 10	162 A
• at rotary coding switch on switch position 11	170 A
• at rotary coding switch on switch position 12	178 A
• at rotary coding switch on switch position 13	186 A
• at rotary coding switch on switch position 14	194 A
• at rotary coding switch on switch position 15	202 A
• at rotary coding switch on switch position 16	210 A
• minimum	90 A
adjustable motor current	
• for inside-delta circuit at rotary coding switch on switch position 1	156 A
• for inside-delta circuit at rotary coding switch on switch position 2	170 A
• for inside-delta circuit at rotary coding switch on switch position 3	184 A
• for inside-delta circuit at rotary coding switch on switch position 4	197 A
• for inside-delta circuit at rotary coding switch on switch position 5	211 A
• for inside-delta circuit at rotary coding switch on switch position 6	225 A
• for inside-delta circuit at rotary coding switch on switch position 7	239 A
• for inside-delta circuit at rotary coding switch on switch position 8	253 A
• for inside-delta circuit at rotary coding switch on switch position 9	267 A
• for inside-delta circuit at rotary coding switch on switch position 10	281 A
• for inside-delta circuit at rotary coding switch on switch position 11	294 A
• for inside-delta circuit at rotary coding switch on switch position 12	308 A
• for inside-delta circuit at rotary coding switch on switch position 13	322 A
• for inside-delta circuit at rotary coding switch on switch position 14	336 A
• for inside-delta circuit at rotary coding switch on switch position 15	350 A
• for inside-delta circuit at rotary coding switch on switch position 16	364 A
• at inside-delta circuit minimum	156 A
minimum load [%]	15 %; Relative to smallest settable I _e
power loss [W] for rated value of the current at AC	
• at 40 °C after startup	75 W
• at 50 °C after startup	68 W
• at 60 °C after startup	63 W
power loss [W] at AC at current limitation 350 %	
• at 40 °C during startup	3 562 W
• at 50 °C during startup	2 979 W
• at 60 °C during startup	2 617 W

Control circuit/ Control

type of voltage of the control supply voltage	AC/DC
control supply voltage at AC	

<ul style="list-style-type: none"> • at 50 Hz rated value • at 60 Hz rated value 	24 V
relative negative tolerance of the control supply voltage at AC at 50 Hz	24 V
relative positive tolerance of the control supply voltage at AC at 50 Hz	-20 %
relative negative tolerance of the control supply voltage at AC at 60 Hz	20 %
relative positive tolerance of the control supply voltage at AC at 60 Hz	-20 %
control supply voltage frequency	20 %
relative negative tolerance of the control supply voltage frequency	50 ... 60 Hz
relative positive tolerance of the control supply voltage frequency	-10 %
control supply voltage	10 %
<ul style="list-style-type: none"> • at DC rated value 	24 V
relative negative tolerance of the control supply voltage at DC	-20 %
relative positive tolerance of the control supply voltage at DC	20 %
control supply current in standby mode rated value	160 mA
holding current in bypass operation rated value	470 mA
inrush current peak at application of control supply voltage maximum	3.3 A
duration of inrush current peak at application of control supply voltage	12.1 ms
design of the overvoltage protection	Varistor
design of short-circuit protection for control circuit	4 A gG fuse (I _{cu} =1 kA), 6 A quick-acting fuse (I _{cu} =1 kA), C1 miniature circuit breaker (I _{cu} = 600 A), C6 miniature circuit breaker (I _{cu} = 300 A); Is not part of scope of supply

Inputs/ Outputs

number of digital inputs	1
number of digital outputs	3
<ul style="list-style-type: none"> • not parameterizable 	2
digital output version	2 normally-open contacts (NO) / 1 changeover contact (CO)
number of analog outputs	0
switching capacity current of the relay outputs	
<ul style="list-style-type: none"> • at AC-15 at 250 V rated value • at DC-13 at 24 V rated value 	3 A
	1 A

Installation/ mounting/ dimensions

mounting position	with vertical mounting surface +/-90° rotatable, with vertical mounting surface +/- 22.5° tiltable to the front and back
fastening method	screw fixing
height	393 mm
width	210 mm
depth	203 mm
required spacing with side-by-side mounting	
<ul style="list-style-type: none"> • forwards • backwards • upwards • downwards • at the side 	10 mm
	0 mm
	100 mm
	75 mm
	5 mm
weight without packaging	9.9 kg

Connections/ Terminals

type of electrical connection	
<ul style="list-style-type: none"> • for main current circuit • for control circuit 	busbar connection
	screw-type terminals
width of connection bar maximum	45 mm
wire length for thermistor connection	
<ul style="list-style-type: none"> • with conductor cross-section = 0.5 mm² maximum • with conductor cross-section = 1.5 mm² maximum • with conductor cross-section = 2.5 mm² maximum 	50 m
	150 m
	250 m
type of connectable conductor cross-sections	
<ul style="list-style-type: none"> • for DIN cable lug for main contacts stranded • for DIN cable lug for main contacts finely stranded 	2x (50 ... 240 mm ²)
	2x (70 ... 240 mm ²)

type of connectable conductor cross-sections

- for control circuit solid
- for control circuit finely stranded with core end processing
- at AWG cables for control circuit solid

1x (0.5 ... 4.0 mm²), 2x (0.5 ... 2.5 mm²)1x (0.5 ... 2.5 mm²), 2x (0.5 ... 1.5 mm²)

1x (20 ... 12), 2x (20 ... 14)

wire length

- between soft starter and motor maximum
- at the digital inputs at AC maximum
- at the digital inputs at DC maximum

800 m

100 m

1 000 m

tightening torque

- for main contacts with screw-type terminals
- for auxiliary and control contacts with screw-type terminals

14 ... 24 N·m

0.8 ... 1.2 N·m

tightening torque [lbf-in]

- for main contacts with screw-type terminals
- for auxiliary and control contacts with screw-type terminals

124 ... 210 lbf-in

7 ... 10.3 lbf-in

Ambient conditions

installation altitude at height above sea level maximum

5 000 m; Derating as of 1000 m, see catalog

ambient temperature

- during operation

-25 ... +60 °C; Please observe derating at temperatures of 40 °C or above

- during storage and transport

-40 ... +80 °C

environmental category

- during operation according to IEC 60721
- during storage according to IEC 60721
- during transport according to IEC 60721

3K6 (no ice formation, only occasional condensation), 3C3 (no salt mist), 3S2 (sand must not get into the devices), 3M6

1K6 (only occasional condensation), 1C2 (no salt mist), 1S2 (sand must not get inside the devices), 1M4

2K2, 2C1, 2S1, 2M2 (max. fall height 0.3 m)

EMC emitted interference

acc. to IEC 60947-4-2: Class A

Communication/ Protocol**communication module is supported**

- PROFINET standard
- EtherNet/IP
- Modbus RTU
- Modbus TCP
- PROFIBUS

Yes

Yes

Yes

Yes

Yes

UL/CSA ratings**manufacturer's article number****• of circuit breaker**

- usable for Standard Faults at 460/480 V according to UL
- usable for High Faults at 460/480 V according to UL
- usable for Standard Faults at 460/480 V at inside-delta circuit according to UL
- usable for High Faults at 460/480 V at inside-delta circuit according to UL
- usable for Standard Faults at 575/600 V according to UL
- usable for Standard Faults at 575/600 V at inside-delta circuit according to UL

Siemens type: 3VA53, max. 400 A or 3VA54, max. 600 A; I_q = 10 kASiemens type: 3VA53, max. 400 A or 3VA54, max. 600 A; I_q max = 65 kASiemens type: 3VA53, max. 400 A or 3VA54, max. 600 A; I_q = 10 kASiemens type: 3VA53, max. 400 A or 3VA54, max. 600 A; I_q max = 65 kASiemens type: 3VA53, max. 400 A or 3VA54, max. 600 A; I_q = 10 kASiemens type: 3VA53, max. 400 A or 3VA54, max. 600 A; I_q = 10 kA**• of the fuse**

- usable for Standard Faults up to 575/600 V according to UL
- usable for High Faults up to 575/600 V according to UL
- usable for Standard Faults at inside-delta circuit up to 575/600 V according to UL
- usable for High Faults at inside-delta circuit up to 575/600 V according to UL

Type: Class J / L, max. 700 A; I_q = 10 kAType: Class J / L, max. 700 A; I_q = 100 kAType: Class J / L, max. 700 A; I_q = 10 kAType: Class J / L, max. 700 A; I_q = 100 kA**operating power [hp] for 3-phase motors**

- at 200/208 V at 50 °C rated value
- at 220/230 V at 50 °C rated value
- at 460/480 V at 50 °C rated value
- at 200/208 V at inside-delta circuit at 50 °C rated

60 hp

60 hp

150 hp

100 hp

value

• at 220/230 V at inside-delta circuit at 50 °C rated value

125 hp

• at 460/480 V at inside-delta circuit at 50 °C rated value

250 hp

contact rating of auxiliary contacts according to UL

R300-B300

Safety related data

protection class IP on the front according to IEC 60529

IP00; IP20 with cover

touch protection on the front according to IEC 60529

finger-safe, for vertical contact from the front with cover

electromagnetic compatibility

in accordance with IEC 60947-4-2

Certificates/ approvals

General Product Approval

EMC



[Confirmation](#)



Declaration of Conformity

Test Certificates

Marine / Shipping



EG-Konf.



[Type Test Certificates/Test Report](#)



ABS



BUREAU VERITAS



LRS

Marine / Shipping

other



PRS

[Confirmation](#)

Further information

Information- and Downloadcenter (Catalogs, Brochures,...)

<https://www.siemens.com/ic10>

Industry Mall (Online ordering system)

<https://mall.industry.siemens.com/mall/en/en/Catalog/product?mlfb=3RW5243-6TC04>

Cax online generator

<http://support.automation.siemens.com/WW/CAXorder/default.aspx?lang=en&mlfb=3RW5243-6TC04>

Service&Support (Manuals, Certificates, Characteristics, FAQs,...)

<https://support.industry.siemens.com/cs/ww/en/ps/3RW5243-6TC04>

Image database (product images, 2D dimension drawings, 3D models, device circuit diagrams, EPLAN macros, ...)

http://www.automation.siemens.com/bilddb/cax_de.aspx?mlfb=3RW5243-6TC04&lang=en

Characteristic: Tripping characteristics, I^t, Let-through current

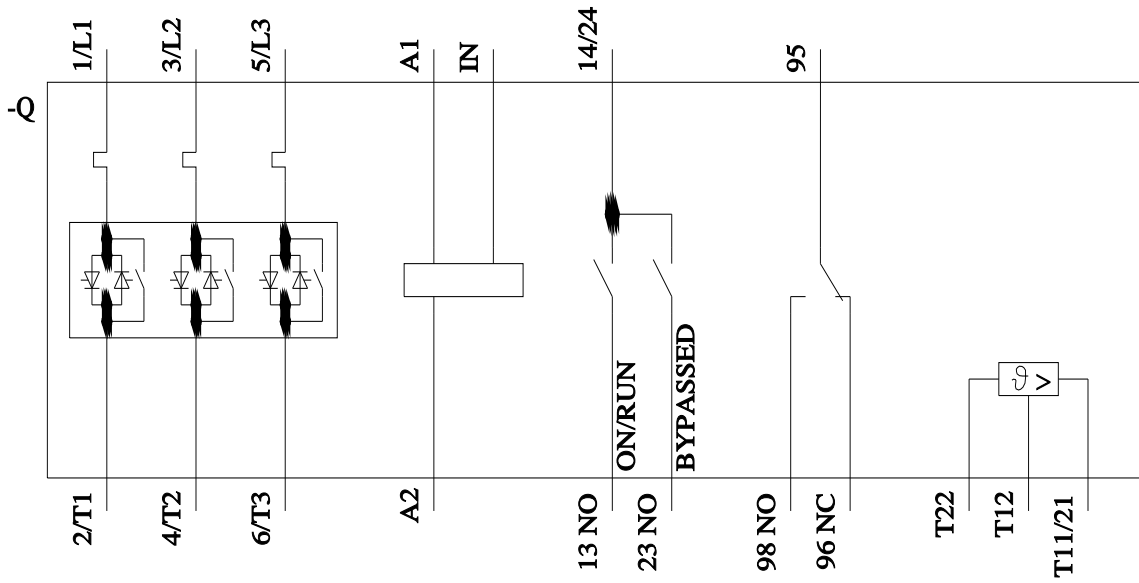
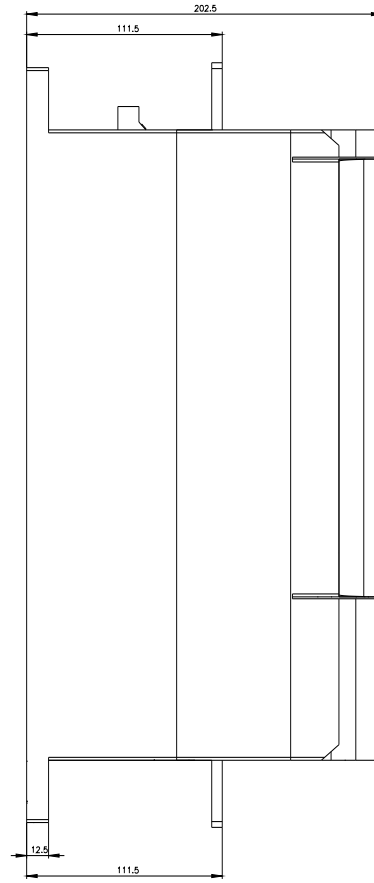
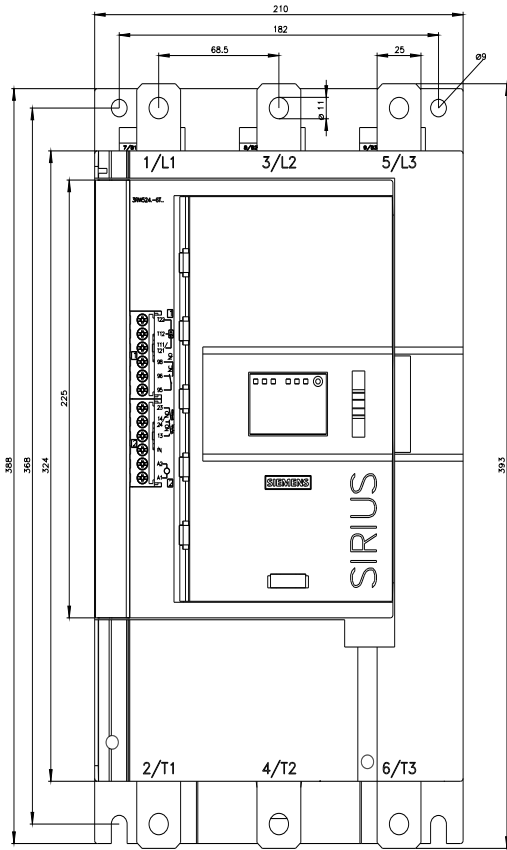
<https://support.industry.siemens.com/cs/ww/en/ps/3RW5243-6TC04/char>

Characteristic: Installation altitude

<http://www.automation.siemens.com/bilddb/index.aspx?view=Search&mlfb=3RW5243-6TC04&objecttype=14&gridview=view1>

Simulation Tool for Soft Starters (STS)

<https://support.industry.siemens.com/cs/ww/en/view/101494917>



last modified:

4/10/2022 