



Figure similar

22MM PLASTIC ROUND COMPLETE UNIT COMBINATION: INDICATOR LIGHT WITH SMOOTH LENSE ILLUMINATED WITH INTEGRATED LED 24V AC/DC SCREW TERMINAL WITH HOLDER WHITE !!! Phased-out product !!! SIRIUS ACT 3SU1 is successor Preferred successor type is >>3SU1102-6AA60-1AA0<<

|  |                     |
|--|---------------------|
| <b>design of the product</b>                           | Complete unit round |
| <b>Enclosure</b>                                       |                     |
| shape of the enclosure front                           | round               |
| material of the enclosure                              | plastic             |
| number of command points                               | 0                   |
| <b>Actuator</b>  |                     |
| design of the actuating element                        | indicator light     |
| product extension optional light source                | Yes                 |
| color of the actuating element                         | white               |
| material of the actuating element                      | plastic             |
| shape of the actuating element                         | Smooth lens         |
| number of switching positions                          | 0                   |
| <b>Front ring</b>                                      |                     |
| product component front ring                           | No                  |
| <b>Holder</b>  |                     |
| material of the holder                                 | Plastic             |
| <b>Contact block/ lampholder</b>                       |                     |
| socket design  | integrated LED      |
| number of lampholders                                  | 1                   |
| number of switching elements                           | 0                   |
| <b>General technical data</b>                          |                     |
| product function                                       |                     |
| • positive opening                                     | No                  |
| • EMERGENCY STOP function                              | No                  |
| product component light source                         | Yes                 |
| protection class IP                                    | IP66                |
| vibration resistance according to IEC 60068-2-6        | 20 ... 200 Hz: 5g   |
| reference code according to IEC 81346-2                | P                   |
| Substance Prohibitance (Date)                          | 07/01/2006          |
| <b>Supply voltage</b>                                  |                     |
| type of voltage of the supply voltage                  |                     |
| • of the light source                                  | AC/DC               |
| supply voltage of the light source at AC               |                     |
| • at 50 Hz rated value                                 | 24 V                |
| • at 60 Hz rated value                                 | 24 V                |
| supply voltage 1 of the light source at DC rated value | 24 V                |
| relative negative tolerance of the supply voltage      | -15 %               |
| relative positive tolerance of the supply voltage      | 10 %                |
| <b>Auxiliary circuit</b>                               |                     |

|  |       |
|--|-------|
| number of NC contacts for auxiliary contacts               | 0     |
| number of NO contacts for auxiliary contacts               | 0     |
| number of CO contacts for auxiliary contacts               | 0     |
| consumed current for rated value of supply voltage maximum | 18 mA |

#### Connections/ Terminals

|  |                      |
|--|----------------------|
| type of electrical connection                  | screw-type terminals |
| tightening torque of the screws in the bracket | 1 ... 1.2 N·m        |

#### Ambient conditions

|  |                |
|--|----------------|
| ambient temperature  |                |
| • during operation   | -25 ... +70 °C |
| • during storage   | -40 ... +80 °C |
| environmental category during operation according to IEC 60721 | 3K6            |

#### Installation/ mounting/ dimensions

|                                   |                |
|-----------------------------------|----------------|
| fastening method                  | front mounting |
| shape of the installation opening | round          |
| mounting diameter                 | 22 mm          |
| mounting height                   | 11 mm          |
| installation width                | 28 mm          |
| installation depth                | 49 mm          |

#### Accessories

|   |    |
|---|----|
| product component holder for 3 switching elements | No |
|---|----|

#### Certificates/ approvals

|                          |                   |
|--------------------------|-------------------|
| General Product Approval | Marine / Shipping |
|--------------------------|-------------------|



|                   |       |
|-------------------|-------|
| Marine / Shipping | other |
|-------------------|-------|



[Confirmation](#)

[Miscellaneous](#)

#### Further information

Siemens has decided to exit the Russian market (see here).

<https://press.siemens.com/global/en/pressrelease/siemens-wind-down-russian-business>

Siemens is working on the renewal of the current EAC certificates.

Please contact your local Siemens office on the status of validity of the EAC certification if you intend to import or offer to supply these products to an EAC relevant market (other than the sanctioned EAEU member states Russia or Belarus).

Information on the packaging

<https://support.industry.siemens.com/cs/ww/en/view/109813875>

Information- and Downloadcenter (Catalogs, Brochures,...)

<https://www.siemens.com/ic10>

Industry Mall (Online ordering system)

<https://mall.industry.siemens.com/mall/en/en/Catalog/product?mlfb=3SB3244-6AA60>

Cax online generator

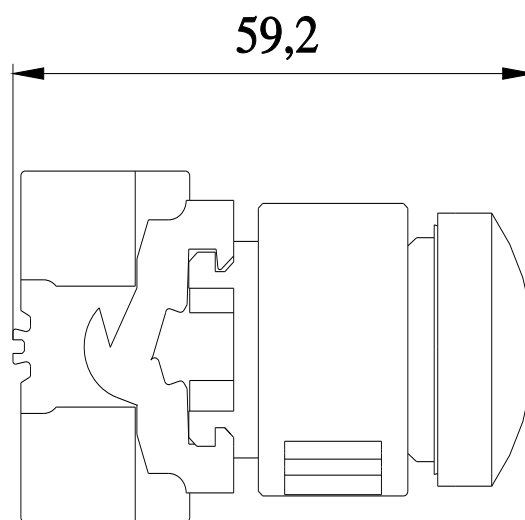
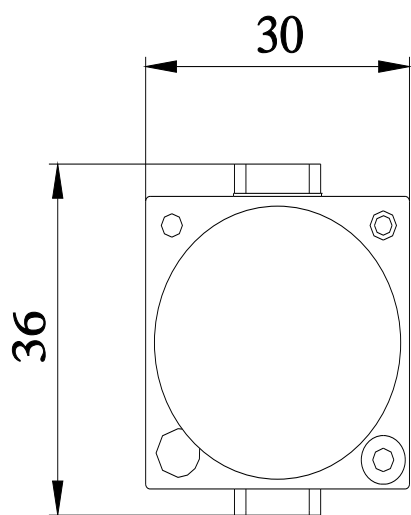
<http://support.automation.siemens.com/WW/CAXorder/default.aspx?lang=en&mlfb=3SB3244-6AA60>

Service&Support (Manuals, Certificates, Characteristics, FAQs,...)

<https://support.industry.siemens.com/cs/ww/en/ps/3SB3244-6AA60>

Image database (product images, 2D dimension drawings, 3D models, device circuit diagrams, EPLAN macros, ...)

[http://www.automation.siemens.com/bilddb/cax\\_de.aspx?mlfb=3SB3244-6AA60&lang=en](http://www.automation.siemens.com/bilddb/cax_de.aspx?mlfb=3SB3244-6AA60&lang=en)



---

last modified:

1/18/2021 