



ACTUATOR-/INDICATOR COMPONENT WITH
INTEGRATED LED 24V AC/DC LAMP HOLDER SPRING-
LOADED TERMINAL WHITE FOR MOUNTING ON FRONT
PLATE

Contact block/ lampholder:

Product designation		lampholder
Number of NC contacts / for auxiliary contacts		0
Number of NO contacts / for auxiliary contacts		0
Number of changeover contacts / for auxiliary contacts		0
Product function / positive opening		No
Number of lampholders		1
Execution of the mounting		integrated
Nature of fluorescent material		LED
Color / of the fluorescent material		white
Design of the electrical connection		spring-loaded terminals

General technical data:

Degree of pollution		class 3
Type of voltage / of the supply voltage / of light source		AC/DC
Supply voltage / 1 / of the fluorescent material		
• at 60 Hz / for AC / rated value	V	24
• at 50 Hz / for AC / rated value	V	24
• for DC / rated value	V	24
Voltage type / of operating voltage		AC/DC
Reference code		

<ul style="list-style-type: none"> • according to DIN EN 61346-2 • according to DIN 40719 extended according to IEC 204-2 / according to IEC 750 		P H
Ambient temperature		
<ul style="list-style-type: none"> • during operating • during storage 	°C °C	-25 ... +70 -25 ... +80
protection type IP		
<ul style="list-style-type: none"> • of the terminal • of the enclosure 		IP20 IP40
Operating voltage / 1 / at 50 Hz / for AC / rated value	V	24
Operating voltage / 1 / at 60 Hz / for AC / rated value	V	24
Operating voltage		
<ul style="list-style-type: none"> • 1 / for DC / rated value • at 50 Hz / at AC / rated value • at 60 Hz / at AC / rated value • for DC • rated value 	V V V V	24 21.6 ... 26.4 21.6 ... 26.4 21.6 ... 26.4
Suitability for integration		
<ul style="list-style-type: none"> • pressure selection button • front element • suspension switch • suspension pushbutton 		Yes Yes Yes Yes
Insulation voltage / rated value	V	400
Impulse voltage resistance / rated value	kV	4
Product component		
<ul style="list-style-type: none"> • fluorescent materials • diode • lamp transformer • series resistance 		Yes Yes No No
Mounting type		front mounting
Width	mm	10
Height	mm	30
Depth	mm	20.7

Connections/ terminals:

Type of the connectable conductor cross-section

<ul style="list-style-type: none"> • for auxiliary contacts / solid 	2x (0.25 ... 1.5 mm²)
<ul style="list-style-type: none"> • for auxiliary contacts / finely stranded / with conductor end processing 	2x (0.25 ... 0.75 mm²)
<ul style="list-style-type: none"> • for auxiliary contacts / finely stranded / without conductor final cutting 	2x (0.25 ... 1.5 mm²)

• for AWG conductors / for auxiliary contacts

2x (24 ... 16)

Certificates/ approvals:

General Product Approval



CCC



CSA



EG-Konf.

Test Certificates

[Special Test Certificate](#)

other

[Confirmation](#)

[Environmental Confirmations](#)

Further information:

Information- and Downloadcenter (Catalogs, Brochures,...)

<http://www.siemens.com/industrial-controls/catalogs>

Industry Mall (Online ordering system)

<http://www.siemens.com/industrial-controls/mall>

Cax online generator

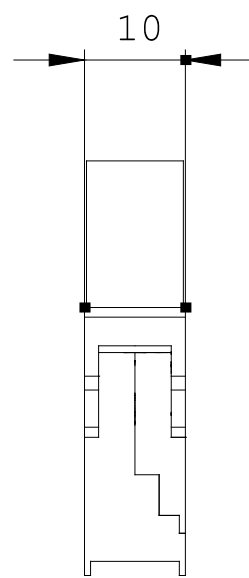
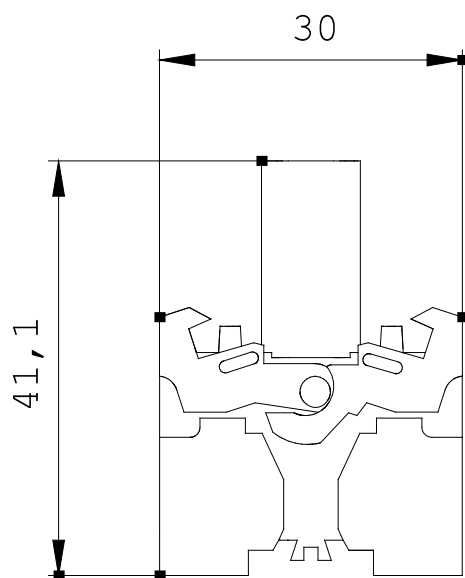
<http://www.siemens.com/cax>

Service&Support (Manuals, Certificates, Characteristics, FAQs,...)

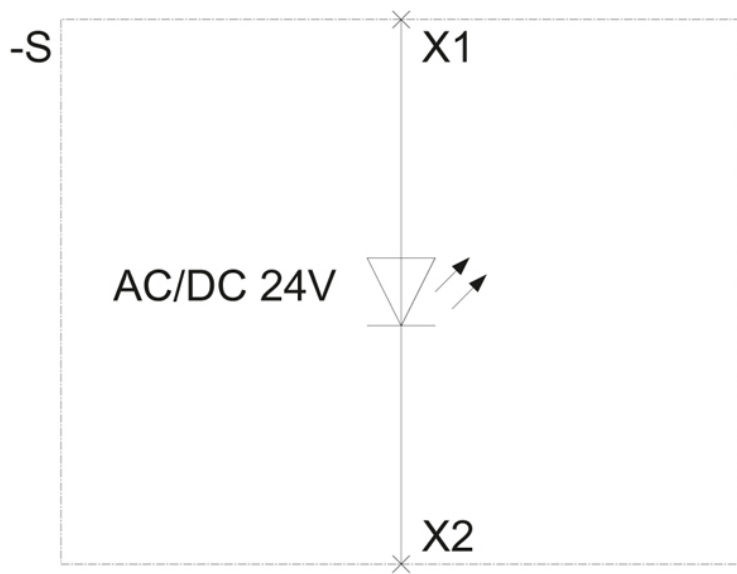
<http://support.automation.siemens.com/WW/view/en/3SB3403-1PE/all>

Image database (product images, 2D dimension drawings, 3D models, device circuit diagrams, ...)

http://www.automation.siemens.com/bilddb/cax_en.aspx?mlfb=3SB3403-1PE



\p
\p



last change:

Jun 16, 2014