



COMPONENT FOR ENCLOSURE,
22MM CONTACT BLOCK WITH 1 CONTACT ELEMENT
SPRING-LOADED TERMINAL,
1NO

General technical details:

Product designation		contact block
Degree of pollution		class 3
Insulation voltage / rated value	V	400
Impulse voltage resistance / rated value	kV	4
Thermal current	A	10
Contact reliability		5 V, 1 mA
Protection against electrical shock		finger-safe
• at AC-12 / at 24 V	A	10
• at AC-12 / at 48 V	A	10
• at AC-12 / at 110 V	A	10
• at AC-12 / at 230 V	A	10
• at AC-12 / at 400 V	A	10
• at AC-15		
• at 24 V	A	6
• at 48 V	A	6
• at 110 V	A	6
• at 230 V	A	6
• at 400 V	A	3
• at DC-12		

<ul style="list-style-type: none"> • at 24 V • at 48 V • at 110 V • at 230 V 	A	10
	A	5
	A	2.5
	A	1
• at DC-13		
<ul style="list-style-type: none"> • at 24 V • at 48 V • at 110 V • at 230 V 	A	3
	A	1.5
	A	0.7
	A	0.3
Type of voltage		
<ul style="list-style-type: none"> • of the operating voltage 		AC/DC
Number of NC contacts / for auxiliary contact		0
Number of NO contacts / for auxiliary contact		1
Number of change-over switches / for auxiliary contact		0
Suitability for integration		front element
<ul style="list-style-type: none"> • suspension button 		Yes
<ul style="list-style-type: none"> • pressure selection button 		No
<ul style="list-style-type: none"> • front element 		No
<ul style="list-style-type: none"> • suspension button 		Yes
Item designation		
<ul style="list-style-type: none"> • according to DIN 40719 extendable after IEC 204-2 / according to IEC 750 		S
<ul style="list-style-type: none"> • according to DIN EN 61346-2 		S

Mechanical design:		
Design of the electrical connection		spring-loaded terminals
Operating cycles / maximum	1/h	1,000
Electrical operating cycles as operating time / with contactors 3RT1015 to 3RT1026 / typical		100,000,000
Mechanical operating cycles as operating time / typical		10,000,000
Protection class IP		IP20
Protection class IP / of the housing		IP40
Type of fixing/fixation		floor mounting
Product component		
<ul style="list-style-type: none"> • fluorescent materials 		No
<ul style="list-style-type: none"> • diode 		No
<ul style="list-style-type: none"> • series resistance 		No
<ul style="list-style-type: none"> • lamp transformer 		No
Width	mm	10
Height	mm	49
Depth	mm	33.5

Connections:

Type of connectable conductor cross section

- for auxiliary contacts
 - solid
 - finely stranded
 - without conductor final cutting
 - with wire end processing
- for AWG conductors / for auxiliary contacts

2x (0.25 ... 1.5 mm²)

2x (0.25 ... 1.5 mm²)

2x (0.25 ... 0.75 mm²)

2x (24 ... 16)

Ambient conditions:

Ambient temperature

- during the operating phase

°C

70 ... -25

Further information:

Information- and Downloadcenter (Catalogs, Brochures,...)

<http://www.siemens.com/industrial-controls/catalogs>

Global Industry Mall (Online ordering system)

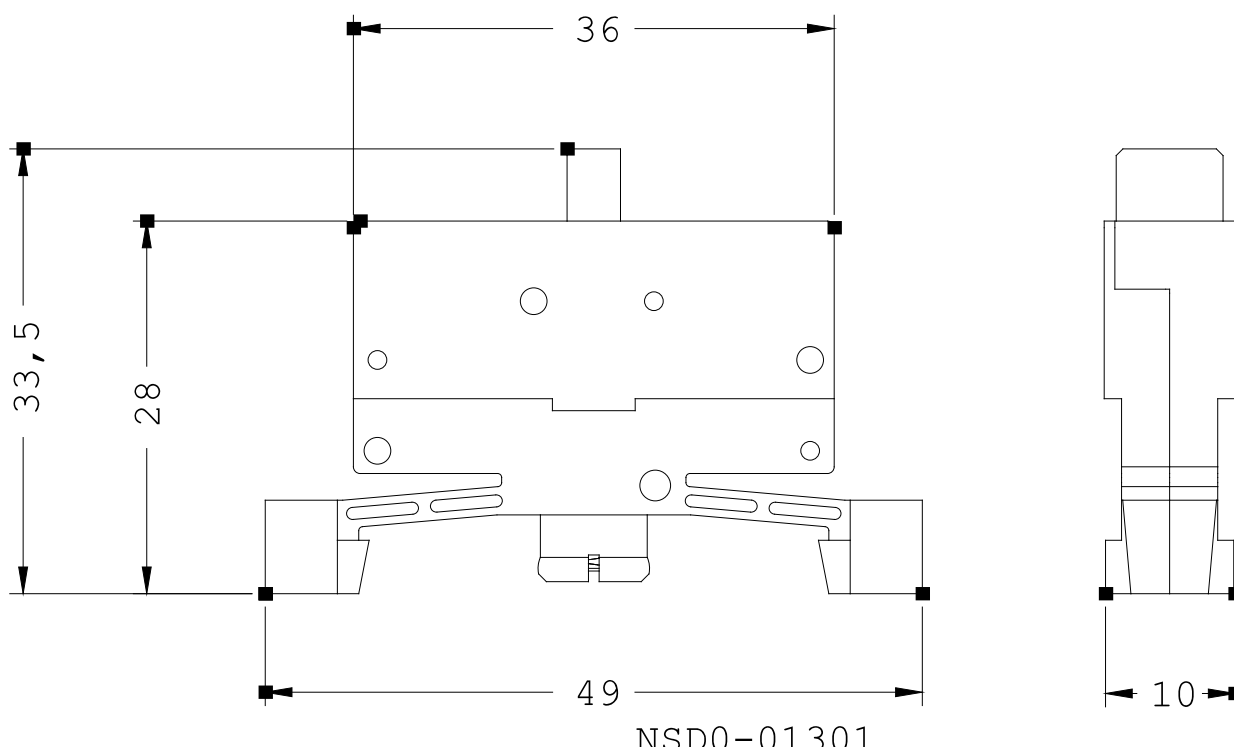
<http://www.siemens.com/industrial-controls/mall>

Service&Support (Manuals, Certificates, Characteristics, FAQs,...)

<http://support.automation.siemens.com/WW/view/en/3SB3423-0B/all>

Image database (product images, 2D dimension drawings, 3D models, device circuit diagrams, ...)

http://www.automation.siemens.com/bilddb/cax_en.aspx?mlfb=3SB3423-0B



last change:

Aug 16, 2010