



22MM METAL ROUND ACTUATOR:  
MUSHR.PUSHBUTTON 60MM MOMENTARY CONTACT  
TYPE WITH HOLDER YELLOW

### Actuator:

Design of the operating mechanism		mushromm pushbutton, Ø 60 mm
Shape / of the activation element		round
Manner of function / of the activation element		<ul style="list-style-type: none"> <li>• arresting lock</li> <li>• tentative</li> </ul>
Outer diameter / of the activation element	mm	60
Material / of the activation element		plastic

### Button:

Design of the button		raised
Color / of the button		yellow

### Front ring:

Material / of the front ring		metal
Color / of the front ring		silver

### General technical details:

Design of the product		Ø 60 mm
Number of control points		1
Number of indicator lights / installable		0

<b>Number of switching positions</b>		2
<b>Product extension / optional / fluorescent materials</b>		No
<b>Product function / emergency-OFF function</b>		No
<b>Type of unlocking device</b>		without
<b>Resistance against shock</b> • for devices without incandescent lamp / according to IEC 60068-2-27		<= 50g
<b>Operating cycles / maximum</b>	1/h	1,000
<b>Resistance against vibration / according to IEC 60068-2-6</b>		20 ... 200 Hz: 5g
<b>Mechanical operating cycles as operating time / typical</b>		300,000
<b>Item designation</b> • according to DIN 40719 extendable after IEC 204-2 / according to IEC 750 • according to DIN EN 61346-2		S S

#### Auxiliary Contacts:

<b>Number of NC contacts / for auxiliary contact</b>		0
<b>Number of NO contacts / for auxiliary contact</b>		0
<b>Number of change-over switches / for auxiliary contact</b>		0







#### Installation/mounting/dimensions:

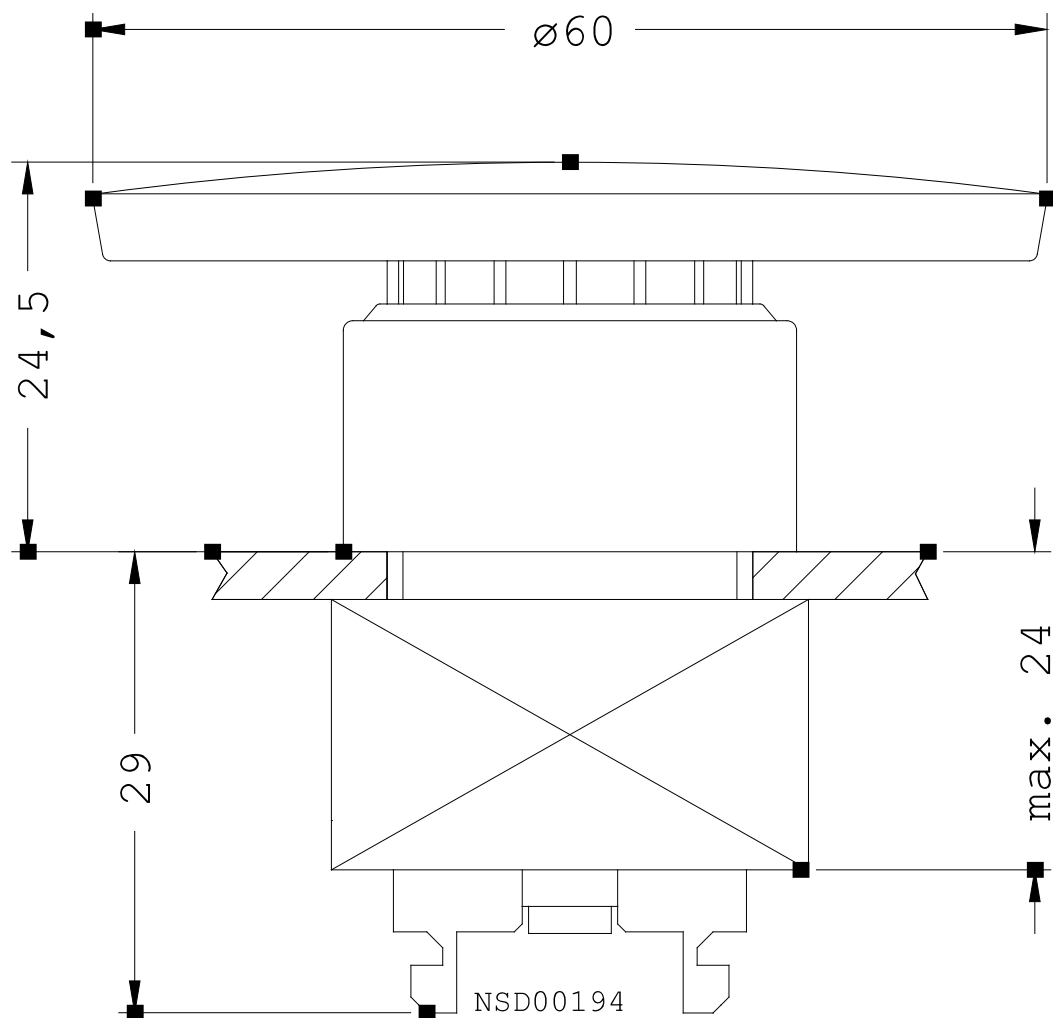
<b>Product component / front ring</b>		Yes
<b>Material / of the housing</b>		metal
<b>Type of mounting</b>		front mounting
<b>Installation width</b>	mm	22
<b>Shape / of the installation hole</b>		round
<b>Mounting diameter</b>	mm	22
<b>Height</b>	mm	60
<b>Width</b>	mm	60
<b>Depth</b>	mm	53.5
<b>Tightening torque / of the screws in the holder / maximum</b>	N·m	1

#### Ambient conditions:

<b>Ambient temperature</b> • during the operating phase • during storage	°C °C	70 ... -25 -40 ... 80
<b>Protection class IP</b>		IP67
<b>Climatic class / according to DIN EN ISO 6270-2</b>		KTW24

#### Certificates/approvals:

General Product Approval		Test Certificates	
	<a href="#">ROSTEST</a>		<a href="#">Manufacturer</a>
Shipping Approval			
<a href="#">ABS</a>			
		<a href="#">PRS</a>	
other			
<a href="#">Manufacturer</a>			
Further information:			
<b>Information- and Downloadcenter (Catalogs, Brochures,...)</b> <a href="http://www.siemens.com/industrial-controls/catalogs">http://www.siemens.com/industrial-controls/catalogs</a>			
<b>Industry Mall (Online ordering system)</b> <a href="http://www.siemens.com/industrial-controls/mall">http://www.siemens.com/industrial-controls/mall</a>			
<b>CAX-Online-Generator</b> <a href="http://www.siemens.com/cax">http://www.siemens.com/cax</a>			
<b>Service&amp;Support (Manuals, Certificates, Characteristics, FAQs,...)</b> <a href="http://support.automation.siemens.com/WW/view/en/3SB3500-1QA31/all">http://support.automation.siemens.com/WW/view/en/3SB3500-1QA31/all</a>			
<b>Image database (product images, 2D dimension drawings, 3D models, device circuit diagrams, ...)</b> <a href="http://www.automation.siemens.com/bilddb/cax_en.aspx?mlfb=3SB3500-1QA31">http://www.automation.siemens.com/bilddb/cax_en.aspx?mlfb=3SB3500-1QA31</a>			



last change:

Sep 6, 2010