



22MM METAL ROUND ACTUATOR: ILLUMINATED  
PUSHBUTTON WITH FLAT BUTTON ILLUMINABLE INCL.  
HOLDER FOR 3 ELEMENTS WITH HOLDER GREEN,  
SOLVENT-RESISTANT NOT INSCRIBABLE WITH LASER

### Actuator / signaling device:

Design of the product		Single device round
Design of the operating mechanism		Illuminated pushbutton
External diameter / of the activation element	mm	28.5
Type of unlocking device		without
Color / of the activation element		Green
Material / of the activation element		plastic
Shape / of the activation element		Flat pushbutton
Number of switching positions		2
Product component / front ring		Yes
Material / of the front ring		metal
Color / of the front ring		silver
Design of the front ring		Standard
Product function / EMERGENCY STOP function		No

### Holder:

Material / of the holder		Metal
--------------------------	--	-------

### General technical details:

Resistance against shock		
--------------------------	--	--

<ul style="list-style-type: none"> <li>for devices with incandescent lamp / according to IEC 60068-2-27</li> <li>for devices without incandescent lamp / according to IEC 60068-2-27</li> </ul>		<p>&lt;= 30g</p> <p>&lt;= 50g</p>
<b>Resistance against vibration / according to IEC 60068-2-6</b>		20 ... 200 Hz: 5g
<b>Operating cycles / maximum</b>	1/h	1,000
<b>Mechanical operating cycles as operating time / typical</b>		3,000,000
<b>Product extension / optional / fluorescent materials</b>		Yes
<b>Item designation</b> <ul style="list-style-type: none"> <li>according to DIN EN 61346-2</li> <li>according to DIN 40719 extendable after IEC 204-2 / according to IEC 750</li> </ul>		<p>S</p> <p>S</p>
<b>Tightening torque / of the screws in the bracket / maximum</b>	N·m	1
<b>Ambient temperature</b> <ul style="list-style-type: none"> <li>during operating</li> <li>during storage</li> </ul>	<p>°C</p> <p>°C</p>	<p>-25 ... +70</p> <p>-40 ... +80</p>
<b>Protection class IP</b>		IP67
<b>climatic class / during the operating phase / according to EN 60721</b>		3K6
<b>Type of mounting</b>		front mounting
<b>Shape / of the installation hole</b>		round
<b>Installation width</b>	mm	28.5
<b>Mounting diameter</b>	mm	22
<b>Mounting height</b>	mm	12
<b>Mounting depth</b>	mm	29

#### Certificates/approvals:

##### General Product Approval



##### Test Certificates

[Special Test Certificate](#)

##### Shipping Approval



##### other

[Confirmation](#)

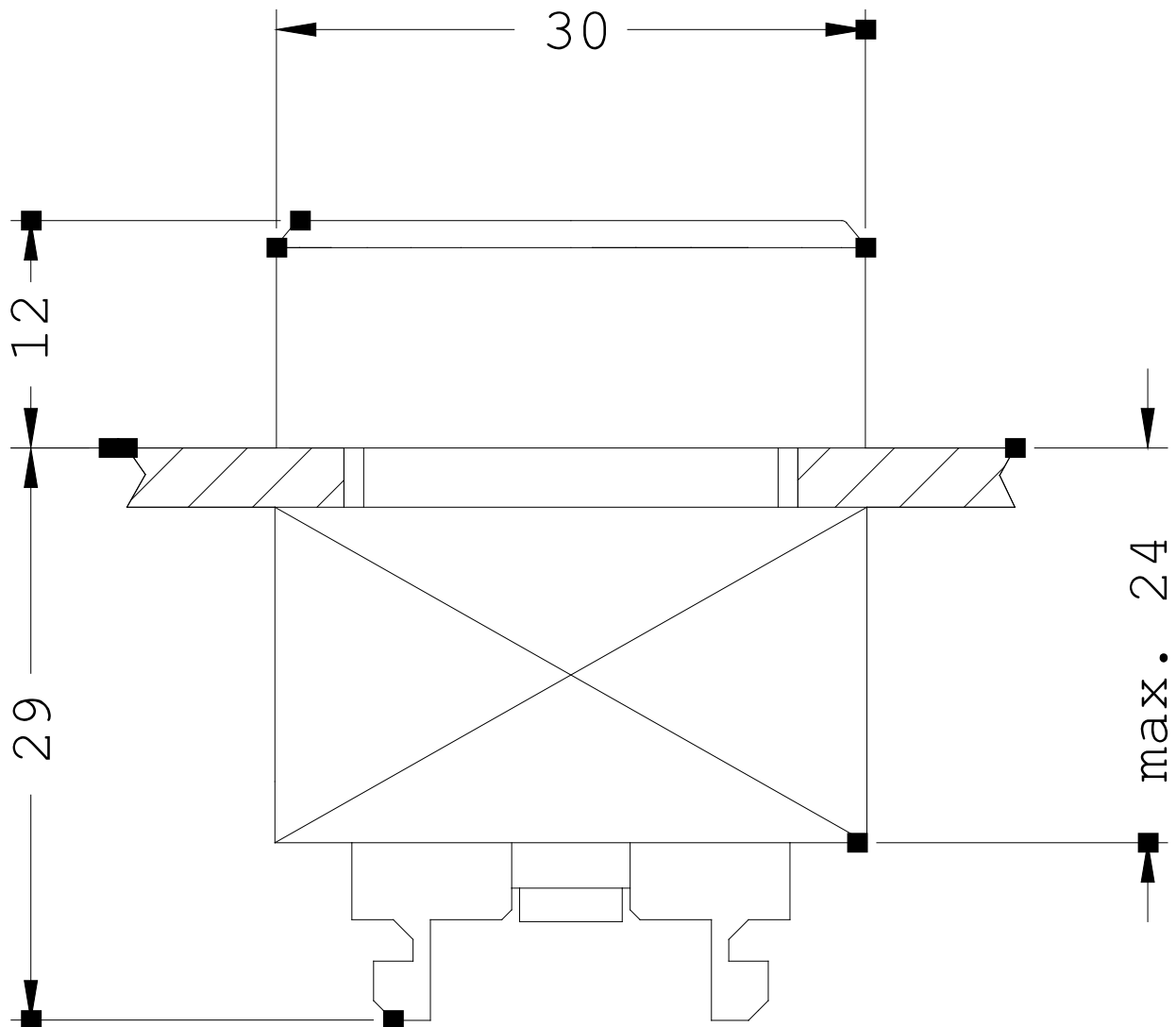
[other](#)

[Environmental Confirmations](#)

#### Further information:

Information- and Downloadcenter (Catalogs, Brochures,...)

<http://www.siemens.com/industrial-controls/catalogs>



last change:

Jan 21, 2013