



22MM METAL ROUND ACTUATOR: SELECTOR SWITCH
LATCHING 3 SWITCH POSITIONS I-O-II ILLUMINATED
WITH HOLDER GREEN

Actuator:

| | | |
|--|----|---|
| Design of the operating mechanism | | selector switch with 3 switch positions, long handle |
| Shape / of the activation element | | round |
| Manner of function / of the activation element | | <ul style="list-style-type: none"> • arresting lock • tentative |
| Outer diameter / of the activation element | mm | 28.5 |
| Material / of the activation element | | plastic |

Button:

| | | |
|-----------------------|--|-------|
| Color / of the button | | green |
|-----------------------|--|-------|

Front ring:

| | | |
|------------------------------|--|--------|
| Material / of the front ring | | metal |
| Color / of the front ring | | silver |

General technical details:

| | | |
|--|--|--------------------------------------|
| Design of the product | | with 3 switch positions, long handle |
| Number of control points | | 1 |
| Number of indicator lights / installable | | 1 |
| Number of switching positions | | 3 |

| | | |
|--|-----|-----------------------------|
| Product extension / optional / fluorescent materials | | Yes |
| Product function / emergency-OFF function | | No |
| Type of unlocking device | | rotate-to-unlatch mechanism |
| Resistance against shock <ul style="list-style-type: none"> • for devices with incandescent lamp / according to IEC 60068-2-27 • for devices without incandescent lamp / according to IEC 60068-2-27 | | ≤ 30g ≤ 50g |
| Operating cycles / maximum | 1/h | 1,000 |
| Resistance against vibration / according to IEC 60068-2-6 | | 20 ... 200 Hz: 5g |
| Mechanical operating cycles as operating time / typical | | 300,000 |
| Item designation <ul style="list-style-type: none"> • according to DIN 40719 extendable after IEC 204-2 / according to IEC 750 • according to DIN EN 61346-2 | | S S |

Auxiliary Contacts:

| | | |
|---|--|---|
| Number of NC contacts / for auxiliary contact | | 0 |
| Number of NO contacts / for auxiliary contact | | 0 |
| Number of change-over switches / for auxiliary contact | | 0 |







Installation/mounting/dimensions:

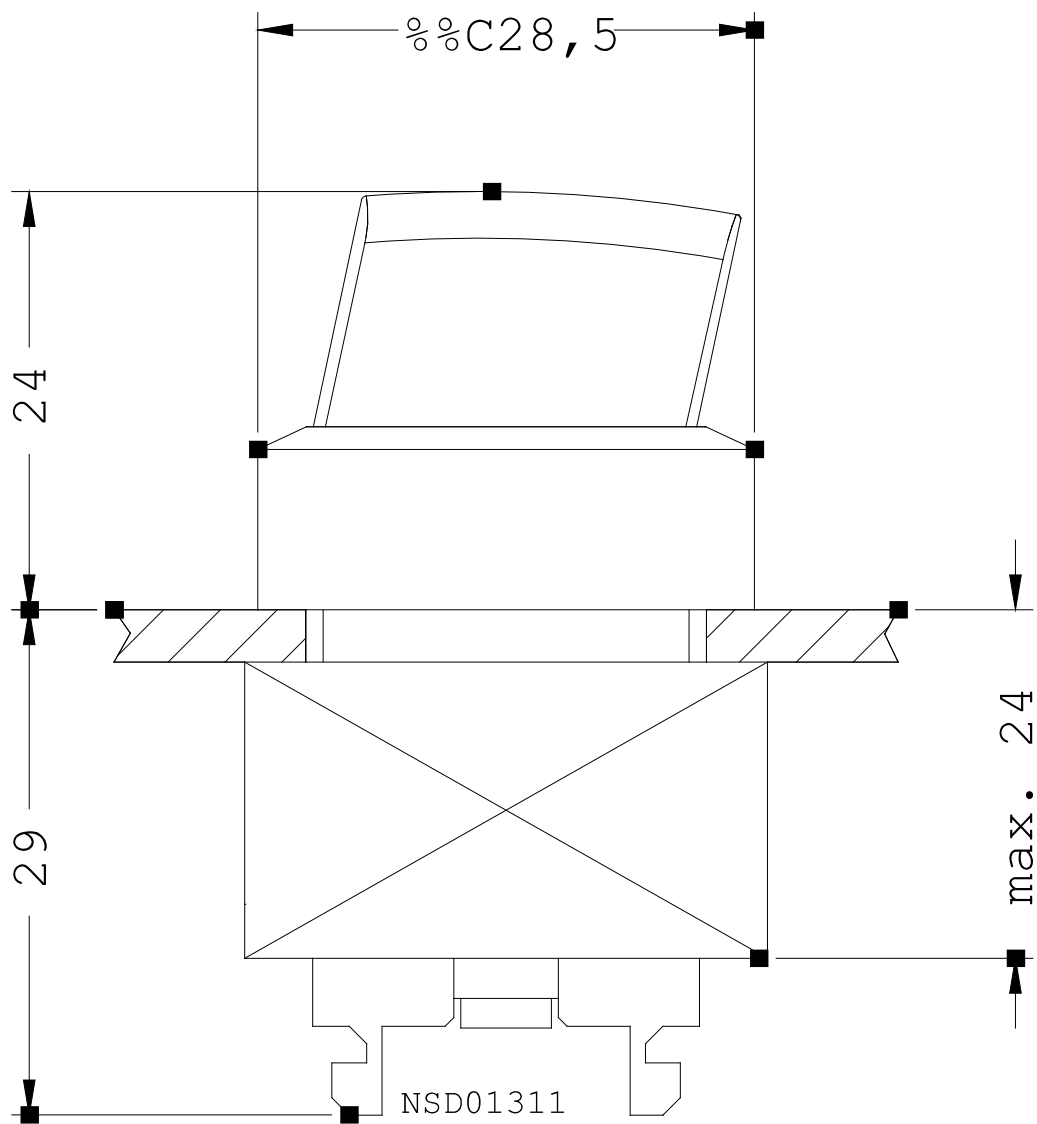
| | | |
|--|-----|----------------|
| Color / of the lens | | green |
| Product component / front ring | | Yes |
| Material / of the housing | | metal |
| Type of mounting | | front mounting |
| Installation width | mm | 22 |
| Shape / of the installation hole | | round |
| Mounting diameter | mm | 22 |
| Height | mm | 30 |
| Width | mm | 30 |
| Depth | mm | 53 |
| Tightening torque / of the screws in the holder / maximum | N·m | 1 |

Ambient conditions:

| | | |
|--|--------------|------------------------------|
| Ambient temperature <ul style="list-style-type: none"> • during the operating phase • during storage | °C °C | 70 ... -25 -40 ... 80 |
| Protection class IP | | IP67 |
| Climatic class / according to DIN EN ISO 6270-2 | | KTW24 |

Certificates/approvals:

| | | | |
|---|---|---|---|
| General Product Approval | | Test Certificates | |
|  | ROSTEST |  | Manufacturer |
| Shipping Approval | | | |
| ABS |  |  |  |
| | | PRS |  |
| other | | | |
| Manufacturer | | | |
| Further information: | | | |
| Information- and Downloadcenter (Catalogs, Brochures,...) http://www.siemens.com/industrial-controls/catalogs | | | |
| Industry Mall (Online ordering system) http://www.siemens.com/industrial-controls/mall | | | |
| CAX-Online-Generator http://www.siemens.com/cax | | | |
| Service&Support (Manuals, Certificates, Characteristics, FAQs,...) http://support.automation.siemens.com/WW/view/en/3SB3501-2DA41/all | | | |
| Image database (product images, 2D dimension drawings, 3D models, device circuit diagrams, ...) http://www.automation.siemens.com/bilddb/cax_en.aspx?mlfb=3SB3501-2DA41 | | | |



last change:

Sep 6, 2010