







22MM METAL ROUND COMPLETE UNIT COMBINATION: ILLUMINATED PUSHBUTTON MOMENTARY CONTACT TYPE WITH FLAT BUTTON ILLUMINATED WITH INTEGRATED LED 24V AC/DC SCREW TERMINAL, 1NO WITH HOLDER GREEN !!! Phased-out product !!! SIRIUS ACT 3SU1 is successor Preferred successor ty >>3SU1152-0AB40-1BA0<<

design of the product	Complete unit round
Enclosure	
shape of the enclosure front	round
material of the enclosure	metal
number of command points	1
Actuator	
design of the actuating element	Illuminated pushbutton
principle of operation of the actuating element	momentary contact type
product extension optional light source	Yes
color of the actuating element	green
material of the actuating element	plastic
shape of the actuating element	Flat pushbutton
type of unlocking device	without
number of switching positions	2
Front ring	
product component front ring	Yes
design of the front ring	Standard
material of the front ring	metal
color of the front ring	silver
Holder	
material of the holder	Metal
Contact block/ lampholder	
socket design	integrated LED
number of lampholders	1
number of switching elements	1
General technical data	
product function positive opening	No
product component light source	Yes
protection class IP	IP67
vibration resistance according to IEC 60068-2-6	20 ... 200 Hz: 5g
operating frequency maximum	1 000 1/h
mechanical service life (operating cycles) typical	3 000 000
reference code according to IEC 81346-2	S
Substance Prohibitance (Date)	07/01/2006
Supply voltage	
type of voltage of the supply voltage	AC/DC
• of the light source	
supply voltage of the light source at AC	24 V
• at 50 Hz rated value	
• at 60 Hz rated value	24 V

supply voltage 1 of the light source at DC rated value	24 V
relative negative tolerance of the supply voltage	-15 %
relative positive tolerance of the supply voltage	10 %
Auxiliary circuit	
number of NC contacts for auxiliary contacts	0
number of NO contacts for auxiliary contacts	1
number of CO contacts for auxiliary contacts	0
consumed current for rated value of supply voltage maximum	18 mA
operational current at AC-12 <ul style="list-style-type: none"> at 24 V rated value at 48 V rated value at 110 V rated value at 230 V rated value at 400 V rated value 	10 A 10 A 10 A 10 A 10 A
operational current at AC-15 <ul style="list-style-type: none"> at 24 V rated value at 48 V rated value at 110 V rated value at 230 V rated value at 400 V rated value 	6 A 6 A 6 A 6 A 3 A
operational current at DC-12 <ul style="list-style-type: none"> at 24 V rated value at 48 V rated value at 110 V rated value at 230 V rated value 	10 A 5 A 2.5 A 1 A
operational current at DC-13 <ul style="list-style-type: none"> at 24 V rated value at 48 V rated value at 110 V rated value at 230 V rated value 	3 A 1.5 A 0.7 A 0.3 A
Connections/ Terminals	
type of electrical connection	screw-type terminals
tightening torque of the screws in the bracket	1.4 ... 1.6 N·m
Ambient conditions	
ambient temperature <ul style="list-style-type: none"> during operation during storage 	-25 ... +70 °C -40 ... +80 °C
environmental category during operation according to IEC 60721	3K6
Installation/ mounting/ dimensions	
fastening method	front mounting
shape of the installation opening	round
mounting diameter	22 mm
mounting height	12 mm
installation width	28.5 mm
installation depth	49 mm
Accessories	
product component holder for 3 switching elements	Yes
Certificates/ approvals	
General Product Approval	Marine / Shipping
<div>       </div>	
Marine / Shipping	other



[Confirmation](#)

[Miscellaneous](#)

Further information

Siemens has decided to exit the Russian market (see here).

<https://press.siemens.com/global/en/pressrelease/siemens-wind-down-russian-business>

Siemens is working on the renewal of the current EAC certificates.

Please contact your local Siemens office on the status of validity of the EAC certification if you intend to import or offer to supply these products to an EAC relevant market (other than the sanctioned EAEU member states Russia or Belarus).

Information on the packaging

<https://support.industry.siemens.com/cs/ww/en/view/109813875>

Information- and Downloadcenter (Catalogs, Brochures,...)

<https://www.siemens.com/ic10>

Industry Mall (Online ordering system)

<https://mall.industry.siemens.com/mall/en/en/Catalog/product?mlfb=3SB3645-0AA41>

Cax online generator

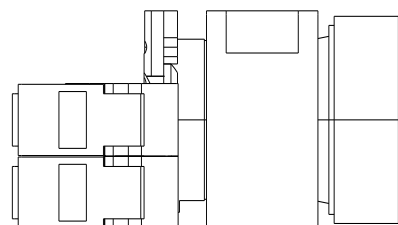
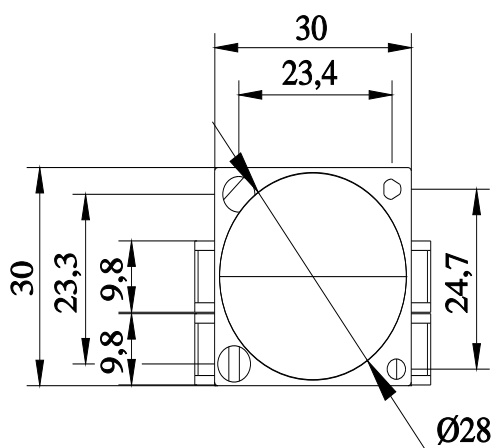
<http://support.automation.siemens.com/WW/CAXorder/default.aspx?lang=en&mlfb=3SB3645-0AA41>

Service&Support (Manuals, Certificates, Characteristics, FAQs,...)

<https://support.industry.siemens.com/cs/ww/en/ps/3SB3645-0AA41>

Image database (product images, 2D dimension drawings, 3D models, device circuit diagrams, EPLAN macros, ...)

http://www.automation.siemens.com/bilddb/cax_de.aspx?mlfb=3SB3645-0AA41&lang=en



last modified:

1/6/2021