



position switch plastic enclosure 50 mm, device connection 2 x (M20 x 1.5)  
1 NO/1 NC quick action contacts, rounded plunger

**product brand name**

SIRIUS

**product designation**

Mechanical position switches

**product type designation**

3SE5

**manufacturer's article number**

- of the supplied switching contacts
- of the supplied empty enclosure with cover

[3SE5000-0CA00](#)

[3SE5242-0AC05](#)

**suitability for use safety switch**

Yes

### General technical data

**product function positive opening**

Yes

**insulation voltage rated value**

400 V

**degree of pollution**

class 3

**surge voltage resistance rated value**

6 kV

**protection class IP**

IP66/IP67

**shock resistance**

- according to IEC 60068-2-27

30g / 11 ms

**vibration resistance**

- according to IEC 60068-2-6

0.35 mm/5g

**mechanical service life (operating cycles) typical**

15 000 000

**electrical endurance (operating cycles) at AC-15 at 230 V typical**

100 000

**electrical endurance (operating cycles) with contactor 3RH11, 3RT1016, 3RT1017, 3RT1024, 3RT1025, 3RT1026 typical**

10 000 000

**Electrical operating cycles in one hour with contactor 3RH11, 3RT1016, 3RT1017, 3RT1024, 3RT1025, 3RT1026**

6 000

**thermal current**

10 A

**material of the enclosure of the switch head**

plastic

**reference code according to IEC 81346-2**

B

**continuous current of the C characteristic MCB**

1 A; for a short-circuit current smaller than 400 A

**continuous current of the quick DIAZED fuse link**

10 A; for a short-circuit current smaller than 400 A

**continuous current of the DIAZED fuse link gG**

6 A

**active principle**

mechanical

**repeat accuracy**

0.05 mm

**Substance Prohibitance (Date)**

07/01/2006

**minimum actuating force in directions of actuation**

20 N

**length of the sensor**

60.7 mm

**width of the sensor**

50 mm

### Ambient conditions

**ambient temperature**

- during operation
- during storage

-25 ... +85 °C

-40 ... +90 °C

**explosion protection category for dust**

none

design of the switching contact	mechanical
operating frequency rated value	50 ... 60 Hz
number of NC contacts for auxiliary contacts	1
number of NO contacts for auxiliary contacts	1
operational current at AC-15	
• at 24 V rated value	6 A
• at 120 V rated value	6 A
• at 240 V rated value	6 A
• at 400 V rated value	4 A
operational current at DC-13	
• at 24 V rated value	3 A
• at 125 V rated value	0.55 A
• at 250 V rated value	0.27 A
• at 400 V rated value	0.12 A

#### Enclosure

design of the housing	block, wide
material of the enclosure	plastic
coating of the enclosure	Other types
design of the housing according to standard	No

#### Drive Head

design of the actuating element	Rounded plunger, plastic plunger
standard-compliant actuator head	EN 50047, design B
shape of the switch head	rounded
design of the switching function	positive opening
circuit principle	snap-action contacts
number of switching contacts safety-related	1
cable entry type	2x (M20 x 1.5)

#### Installation/ mounting/ dimensions

mounting position	any
fastening method	screw fixing

#### Connections/ Terminals

type of electrical connection	screw-type terminals
type of connectable conductor cross-sections	
• solid	1x (0.5 ... 1.5 mm <sup>2</sup> ), 2x (0.5 ... 0.75 mm <sup>2</sup> )
• finely stranded with core end processing	1x (0.5 ... 1.5 mm <sup>2</sup> ), 2x (0.5 ... 0.75 mm <sup>2</sup> )
• at AWG cables solid	1x (20 ... 16), 2x (20 ... 18)
• at AWG cables stranded	1x (20 ... 16), 2x (20 ... 18)
design of the interface for safety-related communication	without

#### Communication/ Protocol

design of the interface	without
-------------------------	---------

#### Certificates/ approvals

##### General Product Approval



[Confirmation](#)



Functional Safety/Safety of Machinery	Declaration of Conformity	Test Certificates	other
---------------------------------------	---------------------------	-------------------	-------

[Type Examination Certificate](#)



[Type Test Certificates/Test Report](#)

[Confirmation](#)

#### Further information

##### Information on the packaging

<https://support.industry.siemens.com/cs/ww/en/view/109813875>

Information- and Downloadcenter (Catalogs, Brochures,...)

<https://www.siemens.com/ic10>

Industry Mall (Online ordering system)

<https://mall.industry.siemens.com/mall/en/en/Catalog/product?mlfb=3SE5242-0CC05>

Cax online generator

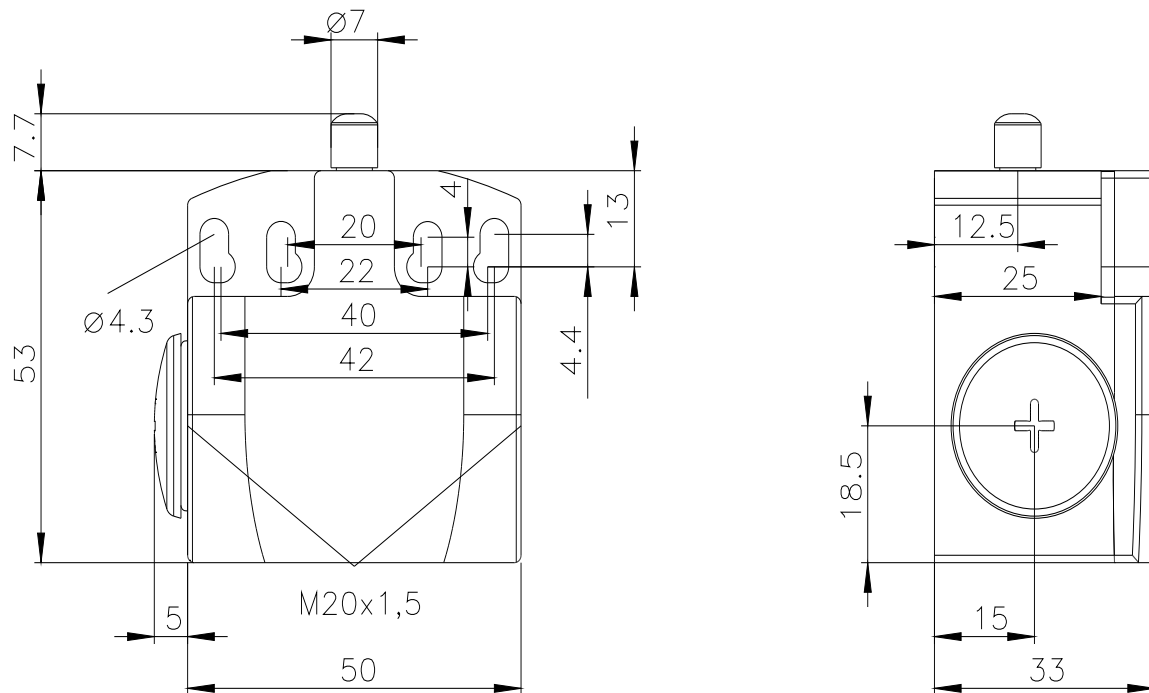
<http://support.automation.siemens.com/WW/CAXorder/default.aspx?lang=en&mlfb=3SE5242-0CC05>

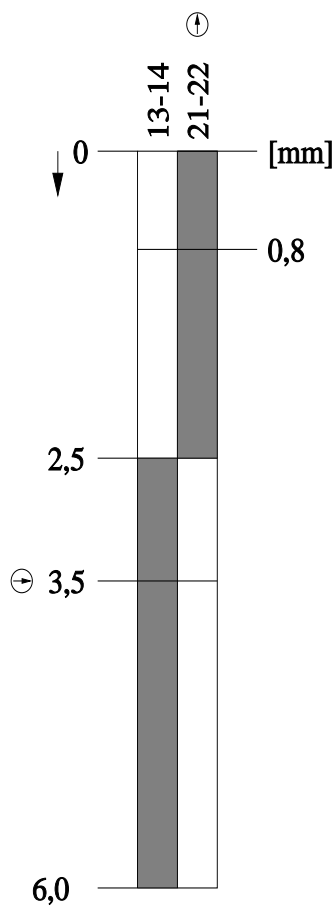
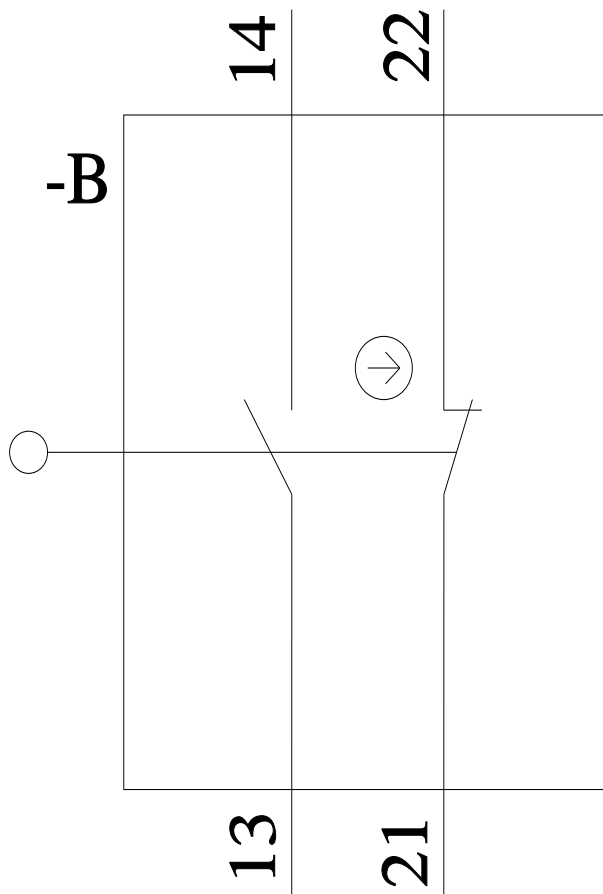
Service&Support (Manuals, Certificates, Characteristics, FAQs,...)

<https://support.industry.siemens.com/cs/ww/en/ps/3SE5242-0CC05>

Image database (product images, 2D dimension drawings, 3D models, device circuit diagrams, EPLAN macros, ...)

[http://www.automation.siemens.com/bilddb/cax\\_de.aspx?mlfb=3SE5242-0CC05&lang=en](http://www.automation.siemens.com/bilddb/cax_de.aspx?mlfb=3SE5242-0CC05&lang=en)





last modified:

3/23/2022 