



Magnet switch Switching element, rectangular small 26 x 36 mm, for door hinge on the right, Contact elements: Safety contacts 1 NO+1 NC Signaling contacts 1 NC with 8 mm latching connection Connector 6-pole, without LED the matching solenoid 3SE6714-3CA or offset by 90° 3SE6724-3CA

<b>product brand name</b>	SIRIUS
<b>product designation</b>	Magnetically operated switch
<b>design of the product</b>	Rectangular sensor unit
<b>product type designation</b>	3SE66
<b>suitability for use safety-related circuits</b>	Yes

### General technical data

<b>product function</b>	
• positive opening	No
• control function for downstream devices	No
• cross-circuit/short-circuit recognition	Yes
<b>type of voltage of the operating voltage</b>	DC
<b>protection class IP</b>	IP67
<b>shock resistance according to IEC 60068-2-27</b>	Sinusoidal half-wave 30g / 11 ms
<b>vibration resistance according to IEC 60068-2-6</b>	10 ... 55 Hz: 1 mm
<b>reference code according to IEC 81346-2</b>	S
<b>Substance Prohibitance (Date)</b>	07/01/2006
<b>height of the sensor</b>	36 mm
<b>length of the sensor</b>	13 mm
<b>width of the sensor</b>	26 mm
<b>material of the active sensor area</b>	Plastic, glass-fiber reinforced thermoplastic
<b>mechanical installation condition for sensor</b>	can be installed almost flush

### Ambient conditions

<b>ambient temperature during operation</b>	-25 ... +70 °C
---	----------------

### Control circuit/ Control

<b>type of voltage</b>	DC
<b>operating voltage rated value</b>	30 V
<b>operational current rated value</b>	400 mA
<b>operating power rated value</b>	10 W
<b>number of NC contacts for auxiliary contacts</b>	2
<b>number of NC contacts safety-related</b>	1
<b>number of NO contacts for auxiliary contacts</b>	1
<b>number of NO contacts safety-related</b>	0

### Enclosure

<b>material of the enclosure</b>	Plastic, glass-fiber reinforced thermoplastic
<b>opening direction of the door</b>	right

### Actuator

<b>design of the actuating element</b>	magnet
--	--------

### Display

<b>evaluation unit required</b>	yes
---------------------------------	-----

### Contact

switching frequency	5 Hz
assured operating distance OFF	15 mm
assured operating distance ON	5 mm
design of the switching function	NC contact and NO contact
number of switching contacts for signaling function	1
• safety-related	1

#### Installation/ mounting/ dimensions

fastening method	screw fixing
------------------	--------------

#### Connections/ Terminals

type of electrical connection	Latching connection 8 mm, 6-pole
-------------------------------	----------------------------------

#### Inputs/ Outputs

number of semiconductor outputs	
• for signaling function	0
• safety-related	0
number of outputs as contact-affected switching element	
• as NC contact	
— for signaling function instantaneous contact	1
— safety-related instantaneous contact	1
• as NO contact safety-related instantaneous contact	0

#### Safety related data

B10 value with high demand rate according to SN 31920	12 500 000
Safety Integrity Level (SIL) according to IEC 61508	3
performance level (PL) according to EN ISO 13849-1	e
proportion of dangerous failures	
• with low demand rate according to SN 31920	50 %
• with high demand rate according to SN 31920	50 %
T1 value for proof test interval or service life according to IEC 61508	20 a

#### Certificates/ approvals

General Product Approval	EMC	Functional Safety/Safety of Machinery
--------------------------	-----	---------------------------------------

[Confirmation](#)



[Miscellaneous](#)

Declaration of Conformity	other
---------------------------	-------



[Confirmation](#)

#### Further information

Information on the packaging

<https://support.industry.siemens.com/cs/ww/en/view/109813875>

Information- and Downloadcenter (Catalogs, Brochures,...)

<https://www.siemens.com/ic10>

Industry Mall (Online ordering system)

<https://mall.industry.siemens.com/mall/en/en/Catalog/product?mlfb=3SE6626-3CA01>

Cax online generator

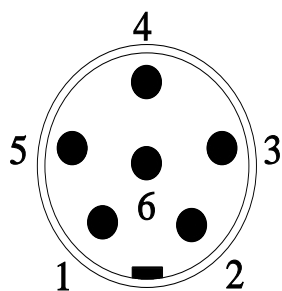
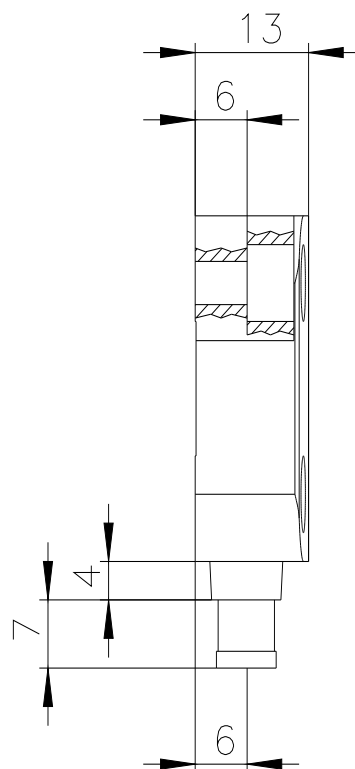
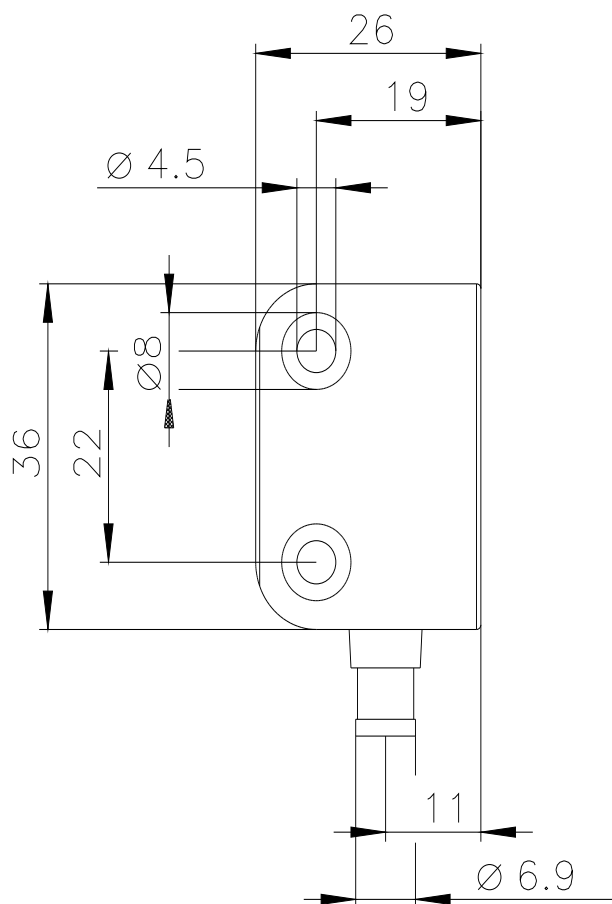
<http://support.automation.siemens.com/WW/CAXorder/default.aspx?lang=en&mlfb=3SE6626-3CA01>

Service&Support (Manuals, Certificates, Characteristics, FAQs,...)

<https://support.industry.siemens.com/cs/ww/en/ps/3SE6626-3CA01>

Image database (product images, 2D dimension drawings, 3D models, device circuit diagrams, EPLAN macros, ...)

[http://www.automation.siemens.com/bilddb/cax\\_de.aspx?mlfb=3SE6626-3CA01&lang=en](http://www.automation.siemens.com/bilddb/cax_de.aspx?mlfb=3SE6626-3CA01&lang=en)



PIN 1	→	21
PIN 2	→	22
PIN 3	→	13
PIN 4	→	14
PIN 5	→	31
PIN 6	→	32

