



LED module with integrated LED, 5 V DC, amber, solder terminal, for use on printed circuit boards

product brand name	SIRIUS ACT
product designation	LED module
product type designation	3SU1
<b>General technical data</b>	
product component	
• diode	Yes
• lamp transformer	No
• light source	Yes
• series resistor	No
insulation voltage rated value	30 V
degree of pollution	3
type of voltage of the operating voltage	DC
• for actuation	DC
surge voltage resistance rated value	0.8 kV
consumed current maximum	20 mA
protection class IP	
• of the enclosure	IP40
• of the terminal	IP20
shock resistance	
• according to IEC 60068-2-27	sinusoidal half-wave 15g / 11 ms
• for railway applications according to EN 61373	Category 1, Class B
vibration resistance	
• according to IEC 60068-2-6	10 ... 500 Hz: 5g
• for railway applications according to EN 61373	Category 1, Class B
operating period typical	100 000 h
reference code according to IEC 81346-2	P
Substance Prohibition (Date)	10/01/2014
operating voltage 1	
• at DC rated value	5 V
relative positive tolerance of the operating voltage	20 %
relative negative tolerance of the operating voltage	20 %
<b>Control circuit/ Control</b>	
inrush current maximum	0.1 A
<b>Connections/ Terminals</b>	
type of electrical connection	Socket connection (THT)
<b>Lamp</b>	
type of light source	LED
color of the light source	amber
light intensity	450 ... 1 120 mcd
certificate of suitability	
• ATEX	No

• IECEX

No

### Ambient conditions

#### ambient temperature

- during operation
- during storage

-25 ... +70 °C  
-40 ... +80 °C

environmental category during operation according to IEC 60721

3M6, 3S2, 3B2, 3K6 (with relative air humidity of 10 ... 95%, no condensation in operation permitted)

### Installation/ mounting/ dimensions

#### fastening method

- of modules and accessories

Printed circuit board

#### height

8.1 mm

#### width

8.1 mm

#### depth

30.6 mm

#### suitability for integration

- plastic enclosure
- metal enclosure

No

No

### Certificates/ approvals

#### General Product Approval

#### Declaration of Conformity



[Confirmation](#)



EG-Konf.

#### Test Certificates

#### Marine / Shipping

[Type Test Certificates/Test Report](#)

[Special Test Certificate](#)



LRS



PRS



RINA

#### Marine / Shipping

#### other



[Confirmation](#)

[Environmental Confirmations](#)

### Further information

#### Information on the packaging

<https://support.industry.siemens.com/cs/ww/en/view/109813875>

#### Information- and Downloadcenter (Catalogs, Brochures,...)

<https://www.siemens.com/ic10>

#### Industry Mall (Online ordering system)

<https://mall.industry.siemens.com/mall/en/en/Catalog/product?mlfb=3SU1401-3BA00-5AA0>

#### Cax online generator

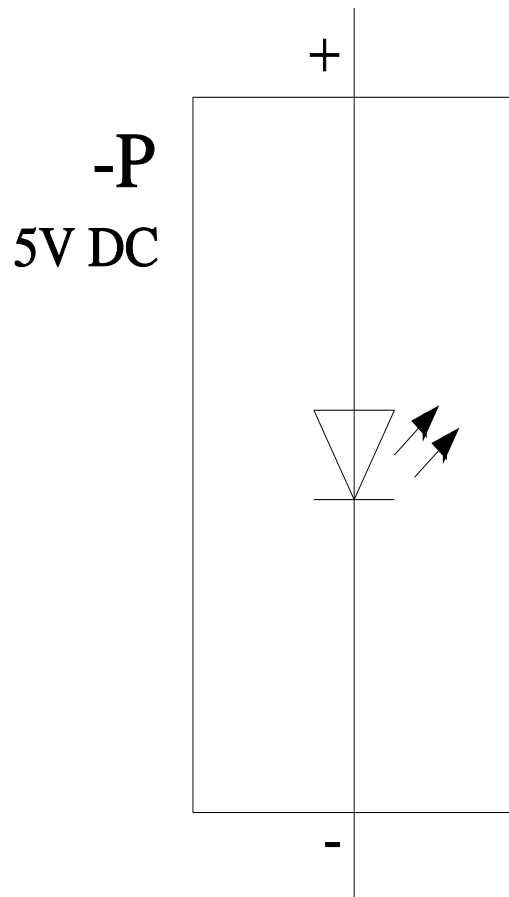
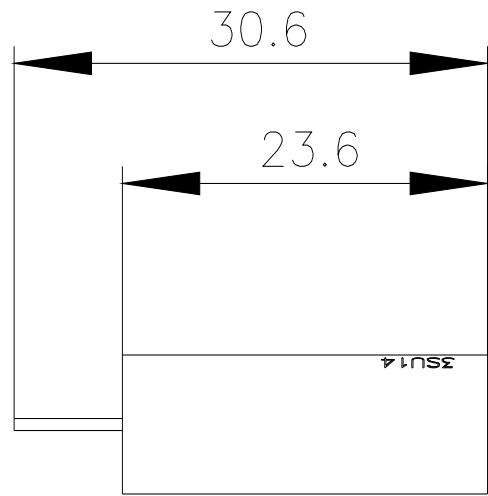
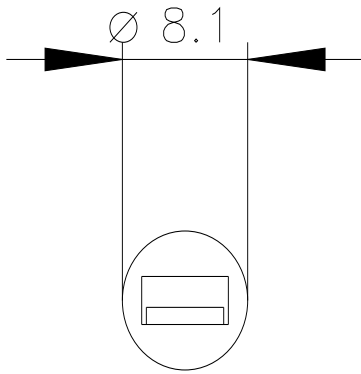
<http://support.automation.siemens.com/WWW/CAXorder/default.aspx?lang=en&mlfb=3SU1401-3BA00-5AA0>

#### Service&Support (Manuals, Certificates, Characteristics, FAQs,...)

<https://support.industry.siemens.com/cs/ww/en/ps/3SU1401-3BA00-5AA0>

#### Image database (product images, 2D dimension drawings, 3D models, device circuit diagrams, EPLAN macros, ...)

[http://www.automation.siemens.com/bilddb/cax\\_de.aspx?mlfb=3SU1401-3BA00-5AA0&lang=en](http://www.automation.siemens.com/bilddb/cax_de.aspx?mlfb=3SU1401-3BA00-5AA0&lang=en)



last modified:

3/9/2022

