



LED module with integrated LED, 5 V DC, white, solder terminal, for use on printed circuit boards

product brand name	SIRIUS ACT
product designation	LED module
product type designation	3SU1

General technical data

product component	
<ul style="list-style-type: none"> • diode • lamp transformer • light source • series resistor 	<p>Yes</p> <p>No</p> <p>Yes</p> <p>No</p>
insulation voltage rated value	30 V
degree of pollution	3
type of voltage of the operating voltage	DC
<ul style="list-style-type: none"> • for actuation 	DC
surge voltage resistance rated value	0.8 kV
consumed current maximum	20 mA
protection class IP	
<ul style="list-style-type: none"> • of the enclosure • of the terminal 	<p>IP40</p> <p>IP20</p>
shock resistance	
<ul style="list-style-type: none"> • according to IEC 60068-2-27 • for railway applications according to EN 61373 	<p>sinusoidal half-wave 15g / 11 ms</p> <p>Category 1, Class B</p>
vibration resistance	
<ul style="list-style-type: none"> • according to IEC 60068-2-6 • for railway applications according to EN 61373 	<p>10 ... 500 Hz: 5g</p> <p>Category 1, Class B</p>
operating period typical	100 000 h
reference code according to IEC 81346-2	P
Substance Prohibition (Date)	10/01/2014
operating voltage 1	
<ul style="list-style-type: none"> • at DC rated value 	5 V
relative positive tolerance of the operating voltage	20 %
relative negative tolerance of the operating voltage	20 %

Control circuit/ Control

inrush current maximum	0.1 A
-------------------------------	-------

Connections/ Terminals

type of electrical connection	Socket connection (THT)
--------------------------------------	-------------------------

Lamp

type of light source	LED
color of the light source	white
light intensity	900 ... 1 400 mcd
certificate of suitability	
<ul style="list-style-type: none"> • ATEX 	No

• IECEX

No

Ambient conditions

ambient temperature

- during operation
- during storage

-25 ... +70 °C
-40 ... +80 °C

environmental category during operation according to IEC 60721

3M6, 3S2, 3B2, 3K6 (with relative air humidity of 10 ... 95%, no condensation in operation permitted)

Installation/ mounting/ dimensions

fastening method

- of modules and accessories

Printed circuit board

height

8.1 mm

width

8.1 mm

depth

30.6 mm

suitability for integration

- plastic enclosure
- metal enclosure

No
No

Certificates/ approvals

General Product Approval

Declaration of Conformity



[Confirmation](#)



EG-Konf.



Test Certificates

Marine / Shipping

[Type Test Certificates/Test Report](#)

[Special Test Certificate](#)



LRS



PRS



RINA

Marine / Shipping

other



[Environmental Confirmations](#)

[Confirmation](#)

Further information

Information on the packaging

<https://support.industry.siemens.com/cs/ww/en/view/109813875>

Information- and Downloadcenter (Catalogs, Brochures,...)

<https://www.siemens.com/ic10>

Industry Mall (Online ordering system)

<https://mall.industry.siemens.com/mall/en/en/Catalog/product?mlfb=3SU1401-3BA60-5AA0>

Cax online generator

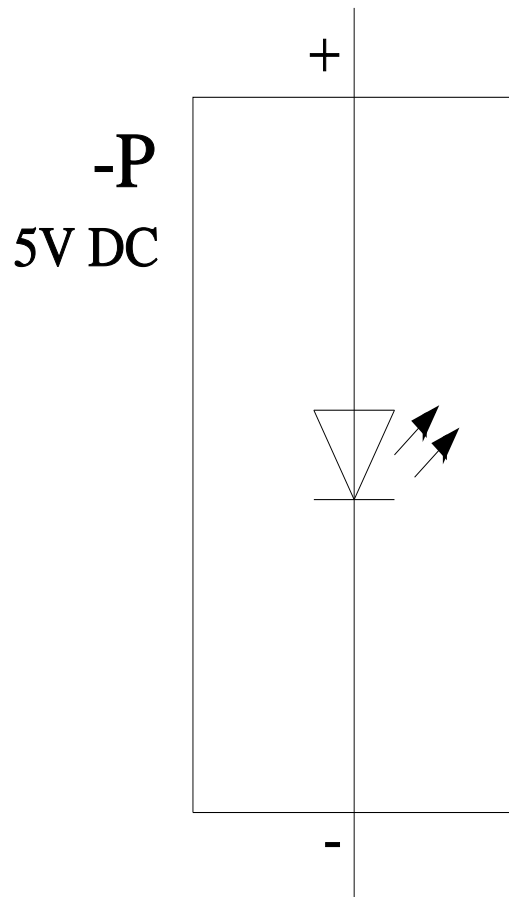
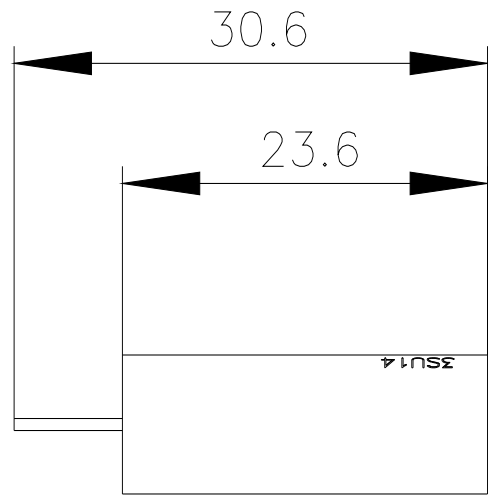
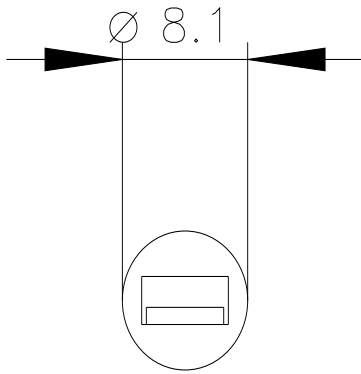
<http://support.automation.siemens.com/WWW/CAXorder/default.aspx?lang=en&mlfb=3SU1401-3BA60-5AA0>

Service&Support (Manuals, Certificates, Characteristics, FAQs,...)

<https://support.industry.siemens.com/cs/ww/en/ps/3SU1401-3BA60-5AA0>

Image database (product images, 2D dimension drawings, 3D models, device circuit diagrams, EPLAN macros, ...)

http://www.automation.siemens.com/bilddb/cax_de.aspx?mlfb=3SU1401-3BA60-5AA0&lang=en



last modified:

3/9/2022

