

DIN SURGE AND FILTER

Power Distribution and Protection > Switchboard Monitoring > Surge Protection > Allen-Bradley Fine Protection Surge Diverters > 4983-DC DIN Rail Surge Filter



Representative Photo Only
(actual product may vary based on configuration selections)

DIN SURGE AND FILTER

- Includes small combination (filter and SPD) package sizes
- Features Isatrol technology
- Includes all-mode transient protection with exceptional line-to-neutral value of 25kA
- Provides a status indicator
- Includes Form C contact for remote status indication
- Mounts to DIN rail

SPECIFICATIONS

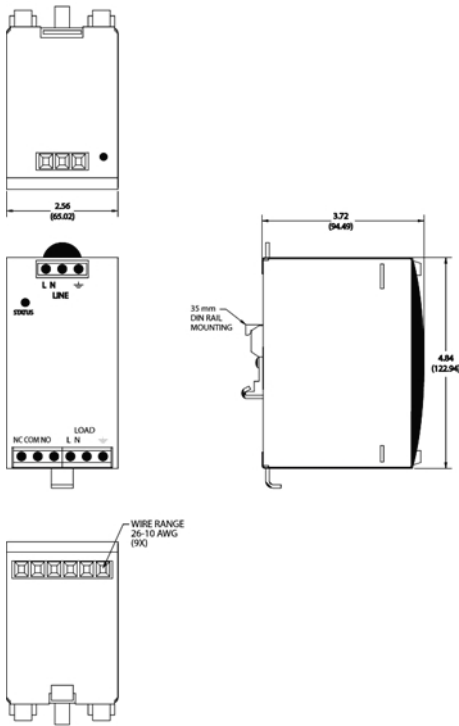
Product Series	4983-DC Surge Protector & Filters
Component Type Surge Protection	Electrical Network Diverter
Un, Nominal Voltage, AC, L-N/PE	240 V AC
Uc, Continuous Operating Voltage, AC, Max	320 V AC
Input Current, Max (rms)	10 A
In, Discharge Current, (8/20) L-N, Nom	3 kA
In, Discharge Current, (8/20) L-PE, Nom	3 kA
In, Discharge Current, (8/20) N-PE, Nom	3 kA
Imax, Discharge Current, (8/20) L-N, Max	25 kA
Imax, Discharge Current, (8/20) L-PE, Max	10 kA
Imax, Discharge Current, (8/20) N-PE, Max	10 kA
Recommended Fuse Current Rating	25 A
Fuse Characteristic Type(s)	UL-CC
Vpr, Voltage Protection Rating, L-L	800 V
Vpr, Voltage Protection Rating, L-PE	1200 V
Rated Frequency	50 / 60 Hz
Connection Mode	Series mode
Protection Modes	L-N, L-G, N-G modes
Visual Indication	Yes Y/N
Indicator Type	LED
Material, Body / Housing	Metal material
Operational Frequency, Min	47 Hz min
Operational Frequency, Max	63 Hz max
Mounting	DIN-35 Rail Mount
tA, Response time (L-L)	5 ns
Wire / Conductor Size (Min)	14 AWG (2.08 mm ²) min
Wire / Conductor Size (Max)	10 AWG (5.26 mm ²) max
Height	122.94 mm

DIN SURGE AND FILTER

Power Distribution and Protection > Switchboard Monitoring > Surge Protection > Allen-Bradley Fine Protection Surge Diverters > 4983-DC DIN Rail Surge Filter

Width	65.02 mm
Depth	94.49 mm
Weight	0.68 kg
Operating Temperature, Min	-40 °C min
Operating Temperature, Max	60 °C max
Standards Compliance	EN 61643-11 IEC 61643-1 UL 1449 3rd Edition UL 1283
Certifications	CSA CE C-UR-US

REFERENCES	
IECEx Certificate	-
Supplier Declaration of Conformity:	-
Installation Guide:	4983DC24010_Installation Instructions
User Manual:	-
Manufacturer Datasheet:	4983DC24010_Manufacturer Datasheet
Manufacturer Catalogue & Product Selection:	4983DC24010_Manufacturer Catalogue



Cat. Nos. 4983-DCxxx-10, -DCxxx-20
Dimension Diagram

